



## Liquid Sampling and Filtration

### Bailers

- Features**
- Disposable and reusable
  - Weighted versions available
  - Pre-cleaned and pre-sealed
- Benefits**
- Easy to use
  - Low cost
  - Eliminates cross contamination (disposable option)
- Application**
- Sampling VOCs



### Field Filters

- Features**
- Particulate analysis
  - 0.45 microfilter
  - Turbid sample filtration
- Benefits**
- Threaded ends
  - Easy to set up
  - Presealed packaging
- Application**
- Onsite filtration of groundwater



### Transfer Vessels

- Features**
- Easy to use
  - Liquid transfer made easy using hand pump
  - Quick Flow
- Benefits**
- Cost effective
  - Reduce laboratory costs
  - Easy to decontaminate / clean
- Application**
- Onsite filtration of groundwater



# Disposable bailers

Simple, inexpensive  
sampling solutions in  
a choice of materials

- Weighted Polyethylene
- Clear PVC
- Teflon



12mm 18mm 39mm

## Applications

- Collection of water and liquids from boreholes and tanks

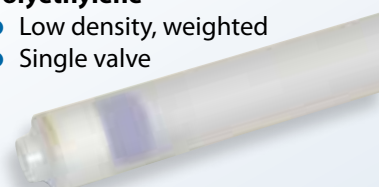
## Benefits

- Designed for borehole sampling
- Inexpensive
- Simple to use

## Choose from

### Polyethylene

- Low density, weighted
- Single valve



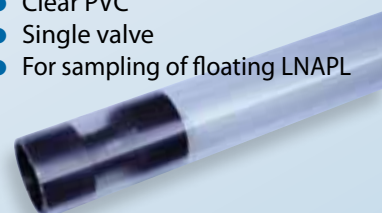
### Clear PVC

- High density, no weight required
- Single & double valve



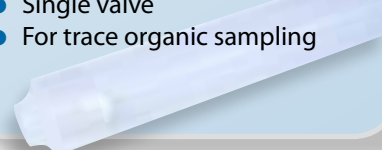
### Hydrocarbon

- Clear PVC
- Single valve
- For sampling of floating LNAPL



### Teflon

- High density, no weight required
- Single valve
- For trace organic sampling



# Disposable bailers

## Single valve bailers (PVC, weighted PE, Teflon)

Collect samples by gently lowering the bailer into the water column. Water fills through the basal non-return valve and is trapped inside the bailer as it is recovered. Use the sample release device to transfer samples to sample containers without spillage. Can also be used to sample thin floating product layers.

Use Teflon bailers for more sensitive trace organic sampling.

## Double valve bailers (PVC)

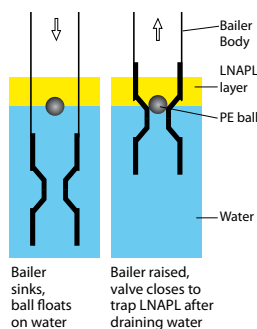
Double valve bailers allow samples to be collected from specific depths. Both valves close on recovery of the bailer, trapping the water sample at the depth of the bailer in the borehole.

When using double valve bailers, Waterra recommend the use of either a 150g or 250g stainless steel ring weight.

## Hydrocarbon bailers (PVC)

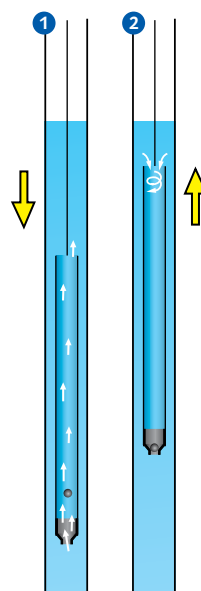
For sampling thicker (> 5cm) floating product layers.

These are designed with a larger diameter inlet section to reduce surface tension. A single polyethylene (PE) ball valve is used which floats in water and sinks in light oil (LNAPL) leaving a product sample within the bailer.



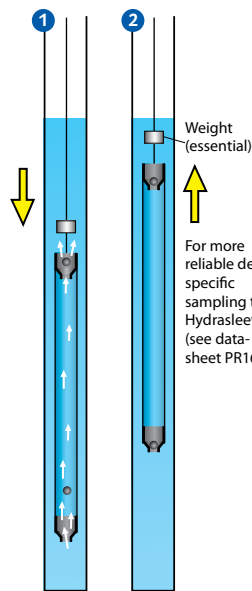
## How bailers work

### Single valve



1. Bailer lowered. Valve open. Water flows through bailer.
2. Bailer raised. Valve closed. Water can mix around the open end of bailer during withdrawal.

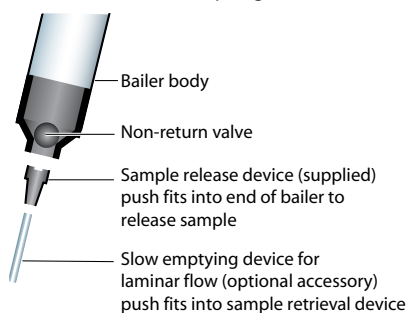
### Double valve



1. Bailer lowered. Both valves open. Water flows through bailer.
2. Bailer raised. Both valves closed. Water sample is trapped inside bailer.

## Slow emptying device

For easy transfer of samples to sample containers without spillage.



## Accessories

A range of optional accessories for bailers is available including filters, weights, suspension cord and reels. See separate datasheet PR06 for details.

Waterra in-line filters can be used with bailers to obtain 0.45 µm filtered samples in the field. Product code FHT-45. See product sheet PR21.



## Bailer types, technical detail and applications

Description	Order code	Box quantity	OD mm	Length mm	Volume ml	Weight g	Valve material	Routine sampling	Specific depth sampling	Trace organics	Floating LNAPL > 5cm	Floating LNAPL < 5cm
<b>Clearview PVC</b> Material density 1.4 g/cm <sup>3</sup>												
Single valve 39mm	DB-39	24 or 10	39	910	1000	150	PVC	●				●
Single valve 18mm	DB-18	24 or 10	18	910	200	60	PVC	●				●
Single valve 12mm	DB-12	24 or 10	12	910	75	30	PVC	●				●
Double valve	DBD-39	24 or 10	39	910	1000	160	PVC		●			
Hydrocarbon	DB-39HC	24 or 10	39	910	950	160	PE				●	
<b>Weighted Polyethylene (PE)</b> Material density 0.9 g/cm <sup>3</sup>												
Single valve	DBPE-39	24 or 10	39	900	925	150 *	PVC	●				●
<b>Teflon</b> Material density 2.2 g/cm <sup>3</sup>												
Single valve	DBT-39	12 or 2	39	930	1000	235	PVC	●		●		●

\* Unweighted = 100 g

## Weights



Order code	Weight	OD mm	Length mm
EW-150	150g	35	20
EW-250	250g	35	33
EW-500	500g	35	67

Stainless steel weights are recommended for use with double valve bailers.

All weights include a centre hole for easy attachment to support cable.

