

# Dynamic contact angle measurement, Powder wettability analysis

## DyneMaster DY-700/500



**Surface Tensiometer DY-700**

The DY-500 and DY-700 feature the same body design

### Features:

- ◆ One-click fully automated operation
- ◆ Jacket-type sample stage with built-in stirrer function
- ◆ Built-in temperature sensor

### Measuring methods:

- ◆ Surface and interfacial tension using the plate and ring method
- ◆ Dynamic contact angle of solids using the plate method
- ◆ Powder contact angle using the Washburn method
- ◆ Lamella length using the ring method
- ◆ Liquid and solid density
- ◆ Sedimentation behavior
- ◆ Evaporation rate

### Typical applications:

- ◆ **Dynamic contact angle:** Wetting and adhesion properties of coatings
- ◆ **Powder contact angle:** Wetting properties of powders, inks and paints
- ◆ **Lamella length:** Foaming stability of coating agents

### Specifications:

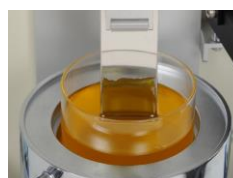
	DY-700	DY-500
Measuring methods	<ul style="list-style-type: none"> <li>• Surface/interfacial tension</li> <li>• Dynamic contact angle</li> <li>• Powder contact angle &amp; wetting speed</li> <li>• Lamella length</li> <li>• Liquid and solid density</li> <li>• Sedimentation behavior</li> <li>• Evaporation rate</li> </ul>	
Measuring range	0.01~100 mN/m	
Precision <sup>1)</sup>	0.02 mN/m	0.2 mN/m
Resolution	0.01 mN/m	
Calibration method	By built-in calibration system	By external calibration weight
Stage speed and stroke	0.002~50 mm/s, 50mm	
Measuring probes	Platinum (Wilhelmy) plate, Platinum (Du Noüy) ring	
Optional measuring kits	Dynamic contact angle, Powder contact angle, Liquid & Solid density, Sedimentation behavior, Evaporation rate	
Measuring temperature	Jacket type: +5 to +90°C, Heater type: Ambient to +150°C	
External dimensions	295(W)×415(D)×452(H)mm	295(W)×415(D)×452(H)mm
Weight	About 23kg	About 20kg
Power supply	AC100-240~50/60Hz	

<sup>1)</sup> Precision is the repeatability described in standard deviation based on manufacturer's standard

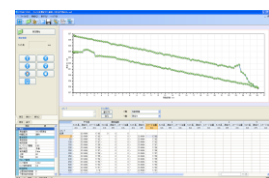
For detailed information please contact our sales partner or us directly at +81-48-483-2629 or at [overseas-sales@face-kyowa.co.jp](mailto:overseas-sales@face-kyowa.co.jp).

The specifications are subject to change without notice.

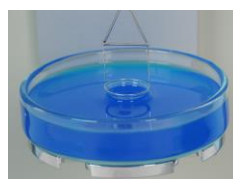
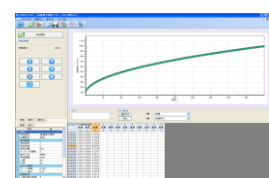
1612



**Dynamic Contact Angle Measurement**



**Powder Contact Angle Measurement**



**Lamella Length Measurement**

