

2020

PRODUCT PORTFOLIO

NETWORK MONITORING, ANALYSIS AND TROUBLESHOOTING



NETWORK
ANALYTICS



AGGREGATION &
INTELLIGENCE



DATA ACCESS
& CAPTURE

 **PROFITAP**

PROFITAP: THE COMPANY

HIGH TECH CAMPUS — EINDHOVEN

Since its founding, PROFITAP® has been at the forefront in developing and manufacturing high-quality and user-friendly network monitoring tools.

Our wide range of high-density Network TAPs, Network Packet Brokers, and portable field service troubleshooters are designed to provide you with complete visibility and access to your network 24/7 all year round.

Profitap is proud to provide the ideal solution for traffic capture and network troubleshooting.



Premium Quality Products

Profitap proudly synthesizes maximum security and performance into all its products. Our dedication toward developing a perfect blend of form and function has resulted in some of the most lightweight, advanced and portable devices on the market.

Profitap continues to provide hardware and software solutions for network analysis and traffic acquisition to organizations and professionals globally. With our solutions being front-runners in the IT industry, we have fused high performance with portability to create exclusive, industry leading monitoring solutions.

Profitap devices use hardware embedded field-programmable gate array (FPGA) technologies, resulting in extremely low latency. Thanks to Profitap's non-intrusive and fail-safe design, our TAPs ensure the utmost security for both network and monitoring appliances.

All devices are subject to a zero failure production regime and following this are stress tested, and in the case of fiber TAPs microscopically inspected to ensure that the optics are dust free.

An Innovative Brand

With our experience, we manufacture and deliver exceptionally designed, innovative monitoring solutions. We have developed our products to set new standards in an industry where the definition of excellence is constantly being challenged.

Experienced Partner Community

Our Partners are fully trained and certified in Profitap's solutions. They are selected for their technical expertise and high standards of customer service. This ensures that working with Profitap solutions is simple, so you can concentrate on running your business.

Global Coverage

With more than 1.000 clients from 55 countries, Profitap has become an integral solution for major businesses, many of which are Fortune Global 500 companies.

Constantly Improving Our Technology

Profitap is self-funded and has an enviable successful financial track record with investment in Research and Development (R&D) being significantly above the market average. This results in the release of innovative devices that are unique in the market.

Easy to Work With

We offer access to our technical support desk as a single point of contact for technical queries and all the product support you need to lead, close and succeed.

PRODUCT LIST

Copper TAPs	6
Fiber TAPs	8
Aggregation TAPs	12
Bypass TAPs	12
Regeneration TAPs	12
Network Packet Brokers (XX Series)	14
Network Packet Brokers (X2 Series)	16
XX & X2 Manager	18
ProfiShark	20
ProfiSight	22
IOTA	26



COPPER TAPS



No Break

PROFITAP® Copper TAPs feature dramatically reduced failover time, consequently reducing the chances of Spanning Tree reconvergence.



Link Failure Propagation

PROFITAP® Copper TAPs transmit link failure errors between ports, allowing the network to activate a redundant path, while the TAP stays available for auto-negotiation. LFP ensures less downtime, and is essential for high availability networks.



Full Visibility

PROFITAP® Copper TAPs monitor all 7 OSI layers, packets of all sizes and types, and low-level errors, making sure not a single packet is lost.



Network Security

PROFITAP® Copper TAPs are non-intrusive, have no IP address, and isolate monitoring devices from the network to ensure complete stealth and security at all times.



Fail-Safe

PROFITAP® Copper TAPs introduce no point of failure to the network and feature redundant powering. In case of complete power failure, our TAPs guarantee that the link remains operational by instantly switching to a fully passive mode.



Eco-friendly

At PROFITAP®, we believe it is the collective responsibility of the IT industry to keep our environment as clean as possible by using green products and contribute to reducing the global carbon footprint. We commit ourselves to producing premium quality and environment-friendly products. With the lowest power consumption on the market.



Compliance

All Copper TAPs are fully 802.3af, VoIP, and PoE compliant.

- Non-intrusive in-line monitoring
- Permanent network link guaranteed
- No packet loss
- No point of failure
- Fully 802.3af, VoIP, and PoE compliant
- Very low latency
- Lowest power consumption on the market

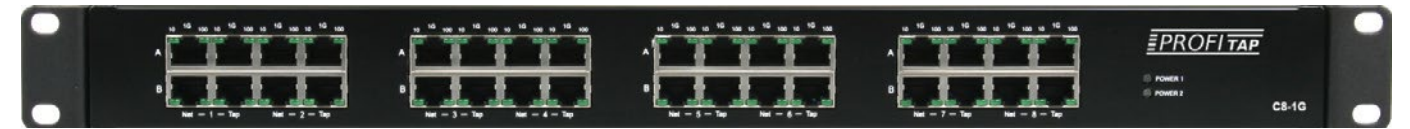
STANDARD LEADTIME: 1-3 working days ARO

- Non-intrusive in-line monitoring
- No packet loss, no point of failure
- Fail-safe monitoring
- Monitoring of all 7 OSI layers
- Supports link failure propagation (LFP)
- Monitor SFP+ ports support SR, LR, Copper modules, and passive Twinax cables
- Fully 802.3af, VoIP, and PoE compliant
- Redundant powering

STANDARD LEADTIME: 1-3 working days ARO

1G CUPPER TAPS

COMPREHENSIVE AND FLAWLESS 10/100/1000 MONITORING



8-LINK GIGABIT COPPER TAP

REF: C8-1G

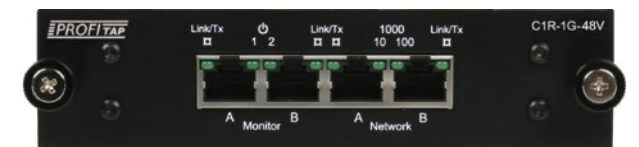
The 8-Link Gigabit Copper TAP is a high density solution, providing 8 TAP links in a 1U rack space.



GIGABIT COPPER TAP

REF: C1R-1G

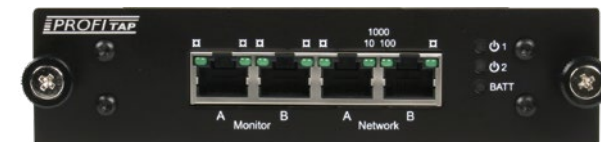
The Gigabit Copper TAP provides monitoring for 1 link. Redundant 12V powering, low power consumption (<4W).



GIGABIT COPPER TAP WITH -48V POWERING

REF: C1R-1G-48V

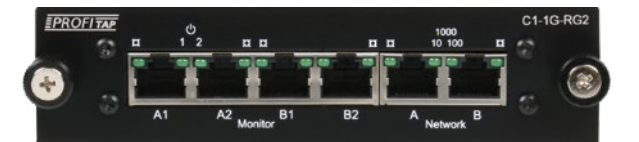
Redundant -48V telecom powering.



GIGABIT COPPER TAP WITH BATTERY BACKUP

REF: C1R-1G-BAT

The battery keeps the link up during power transitions.



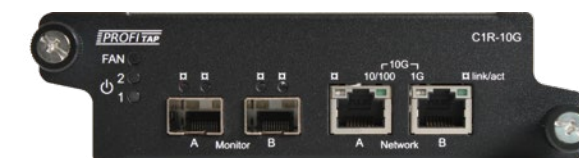
GIGABIT REPLICATOR TAP

REF: C1-1G-RG2

The Replicator TAP duplicates traffic from 1 link to 2 monitoring outputs.

10G CUPPER TAP

THE FIRST 10G COPPER TAP ON THE MARKET



10GBASE-T TAP

REF: C1R-10G

Seamlessly duplicates full-duplex 10M/100M/1G/10G traffic at wire speed. The 10GBASE-T TAP provides monitoring devices with an accurate copy of the traffic with no impact on the network.

FIBER TAPS



Full Visibility

PROFITAP® Fiber TAPs monitor all 7 OSI layers, packets of all sizes and types, and low-level errors, making sure not a single packet is lost for 1G, 10G, 40G and 100G networks.



Network Security

PROFITAP® Fiber TAPs are non-intrusive, have no IP address, and isolate monitoring devices from the network to ensure complete stealth and security at all times.



Fail-Safe

PROFITAP® Fiber TAPs introduce no point of failure to the network because they are fully passive, so they require no additional powering. This way a permanent link is guaranteed.



10 Year Warranty

PROFITAP® Passive Fiber TAPs are covered by a 10-year warranty. Proof of the confidence we place in our products.



Extensive Testing Procedure

Every single one of our fiber components is extensively tested before and after assembly by our team of experts.

STANDARD:

- 40GBASE-SR4
- 100GBASE-SR4
- 100GBASE-SR10

FIBER TYPE:

- OM4 Multi-Mode 50/125µm

SPLIT RATIO:

- 50/50
- 60/40

STANDARD LEADTIME: 1-3 working days ARO

FIBER TYPE:

- MM 62.5/125 µm 1 Gbps
- MM 50/125 µm 1-25 Gbps
- SM 9/125 µm 1-100 Gbps

SPLIT RATIO:

- 50/50
- 60/40
- 70/30

For other split ratios, please contact us for availability.

STANDARD LEADTIME: 1-3 working days ARO

FIBER TYPE:

- OM4 Multi-Mode 40/100 Gbps
- OM5 Multi-Mode 40/100 Gbps

SPLIT RATIO:

- 50/50

STANDARD LEADTIME: 1-3 working days ARO

MTP FIBER OPTIC TAPS



1-Link MTP TAP

Ref: F1M4

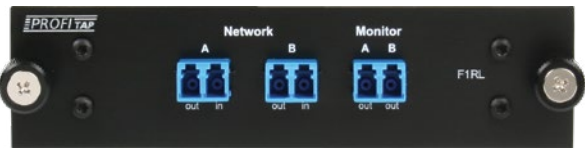


4-Link MTP TAP

Ref: F4MY

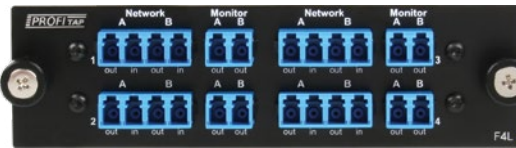
MTP TAPs allow the monitoring of 40GBASE-SR4, 100GBASE-SR4, or 100GBASE-SR10 connections (MM, OM4, 50/50). From 3 to 24 TAP links can fit in a 1U footprint. All MTP TAPs are manufactured with US Conec MTP Elite® connectors.

LC FIBER OPTIC TAPS



1-Link LC TAP

Ref: F1RL



4-Link LC TAP

Ref: F4L

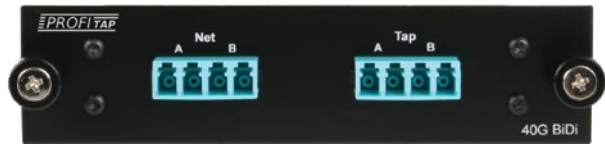


Dual Output LC TAP

Ref: F1x3L

LC Fiber Optic TAPs are available in Single-Mode (1310/1550nm 9/125µm) and Multi-Mode (850/1300nm 50µm and 62.5µm), with split ratios ranging from 50/50 to 80/20.

40/100G BiDi TAPS



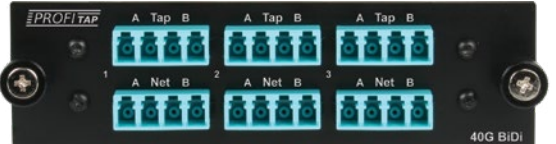
1-Link 40/100G BiDi TAP

(OM4 MM 50µm)

Ref: F1R-40BD

(OM5 MM 50µm)

Ref: F1R-40BD2



3-Link 40/100G BiDi TAP

(OM4 MM 50µm)

Ref: F3R-40BD

(OM5 MM 50µm)

Ref: F3R-40BD2

40/100G BiDi Fiber Optic TAPs enable the monitoring of 40/100G bidirectional links. The Cisco bidirectional standard uses 2 parallel multi-mode fiber strands to transmit the signal, rendering standard tapping systems inadequate. The 40/100G BiDi TAP transmits traffic to monitoring tools from all fiber optic signals, enabling total visibility over the network.

FIBER TAPS



Full Visibility

PROFITAP® Fiber TAPs monitor all 7 OSI layers, packets of all sizes and types, and low-level errors, making sure not a single packet is lost for 1G, 10G, 40G and 100G networks.



Network Security

PROFITAP® Fiber TAPs are non-intrusive, have no IP address, and isolate monitoring devices from the network to ensure complete stealth and security at all times.



Fail-Safe

PROFITAP® Fiber TAPs introduce no point of failure to the network because they are fully passive, so they require no additional powering. This way a permanent link is guaranteed.



10 Year Warranty

PROFITAP® Passive Fiber TAPs are covered by a 10-year warranty. Proof of the confidence we place in our products.



Extensive Testing Procedure

Every single one of our fiber components is extensively tested before and after assembly by our team of experts.

FIBER TYPE:	SPEED:
• MM 62.5/125 μ m	1 Gbps
• MM 50/125 μ m	1-25 Gbps
• SM 9/125 μ m	1-100 Gbps

SPLIT RATIO:
• 50/50
• 60/40
• 70/30

STANDARD:
• 40GBASE-SR4
• 100GBASE-SR4
• 100GBASE-SR10

FIBER TYPE:
• OM4 Multi-Mode 50/125 μ m
SPLIT RATIO:
• 50/50

LC MODULE	
FIBER TYPE:	SPEED:
<ul style="list-style-type: none">• MM 62.5/125 μm• MM 50/125 μm• SM 9/125 μm	<ul style="list-style-type: none">1 Gbps1-10 Gbps1-100 Gbps
SPLIT RATIO:	
<ul style="list-style-type: none">• 50/50• 60/40• 70/30	

MTP MODULE
FIBER TYPE:
• 40GBASE-SR4
• 100GBASE-SR4
• 100GBASE-SR10

40G / 100G BIDI MODULE	
FIBER TYPE:	SPEED:
<ul style="list-style-type: none">• OM4 MM 50/125 μm• OM5 MM 50/125 μm	40 & 100 Gbps 40 & 100 Gbps
SPLIT RATIO:	
<ul style="list-style-type: none">• 50/50	

DIODETAP MODULE	
FIBER TYPE:	SPEED:
<ul style="list-style-type: none">• SM 9/125 μm	1-100 Gbps
SPLIT RATIO:	
<ul style="list-style-type: none">• 50/50• 60/40	

HIGH-DENSITY LC FIBER OPTIC TAP



8-Link LC TAP

Ref: F8L

F8L is an ultra-thin, high-density 8-link LC TAP. Up to three units can fit in a 1U rack space, enabling the monitoring of up to 24 LC links in 1U.

HIGH-DENSITY MTP FIBER OPTIC TAP



8-Link MTP TAP

Ref: F8MY

F8MY is an ultra-thin, high-density 8-link MTP TAP. Up to three units can fit in a 1U rack space, enabling the monitoring of up to 24 MTP links in 1U. All MTP TAPs are manufactured with US Conec MTP Elite® connectors.

MODULAR FIBER OPTIC TAP



Modular Chassis

Ref: AMC-1U

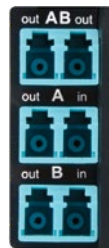
The MOD-TAP is a high-density, modular fiber optic solution providing up to 24 in-line TAP modules in a 1U rack space.



LC Module
Ref: F1L-MOD

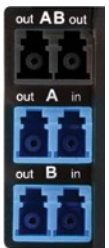


MTP Module
Ref: F1M-MOD



BiDi Module OM4
Ref: F1B-MOD

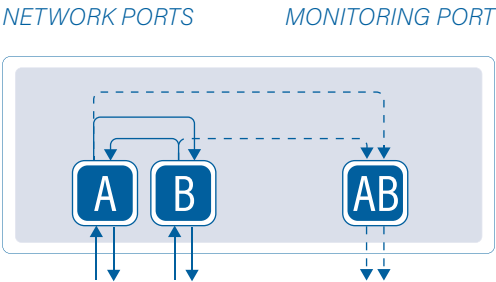
BiDi Module OM5
Ref: F1B2-MOD



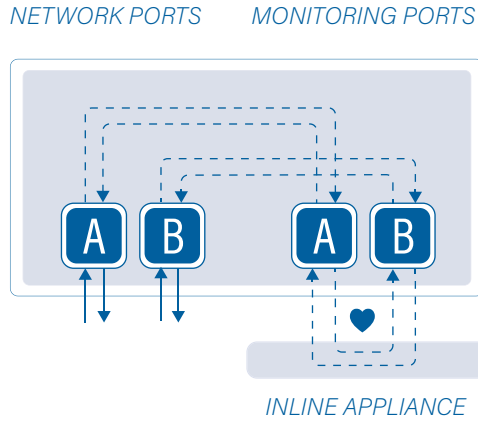
DiodeTAP Module
Ref: F1D-MOD

DiodeTAP Module:
By blocking light coming from the monitor ports, the DiodeTAP ensures total security and availability for monitored networks, while providing full visibility.

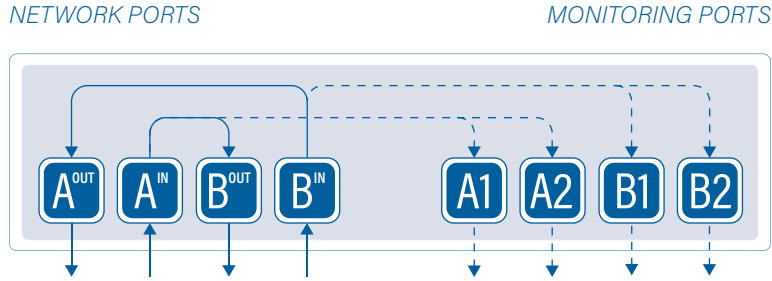
AGGREGATION TAPS



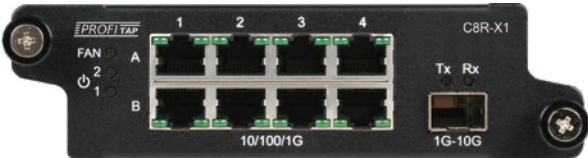
BYPASS TAPS



REGENERATION TAPS



BOOSTER



In-Line Model Ref: C8R-X1

Aggregation of 4 x RJ45 10/100/1G in-line links into 1 SFP+ 1G-10G output.



SPAN Model Ref: F8R-X1

Aggregation of 8 x SFP SPAN 1G ports into 1 SFP+ 1G-10G output.

- Direct link aggregation; no management, installation or driver required
- No bottlenecking; full line-rate performance with reduced delay and no dropped packets
- VLAN Tagging
- Non-intrusive to the network
- Redundant powering
- Fail-safe: in case of complete power failure, the In-Line Booster keeps the link up and switches to a fully passive mode, guaranteeing a fully operational network at all times
- PoE passthrough

STANDARD LEADTIME: 1-3 working days ARO

BYPASS TAPS



10G BYPASS TAP Ref: F1-10G-BP



40G BYPASS TAP Ref: F1-40G-BP

A Bypass TAP is a fail-safe solution that actively checks the availability of in-line appliances, by sending heartbeat packets. If the tools' availability is compromised in any way, the TAP automatically switches to a bypass mode, maintaining the network link up until the issue is fixed.

Similarly, the Bypass TAP also allows network engineers to manually bypass the in-line tool, to keep the network fully operational during maintenance and troubleshooting.

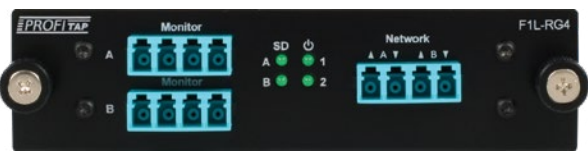
- Protects the network link availability
- Bidirectional and configurable heartbeats
- Supports link failure propagation (LFP)
- No point of failure
- Redundant powering
- Secure and completely invisible to the network

STANDARD LEADTIME: 1-3 working days ARO

LC FIBER OPTIC REGENERATION TAPS



2x Regeneration TAP Ref: F1L-RG2



4x Regeneration TAP Ref: F1L-RG4

Regeneration TAPs enable multiple monitoring systems to access a single LC fiber optic link. Regeneration TAPs only split the signal once, before regenerating it multiple times. This greatly mitigates the weakening of the optical signal that results from excessive splitting.

- FIBER TYPE:
- MM 50/125 μ m
 - SM 9/125 μ m
- SPEED:
- 1-10 Gbps
 - 1-10 Gbps

SPLIT RATIO:

- 50/50
- 60/40

STANDARD LEADTIME: 1-3 working days ARO

XX-SERIES NETWORK PACKET BROKERS

Network Packet Brokers optimize the performance of network analysis and security tools. With a centralized position between the network and the monitoring tools, they remove blind spots and deliver only the relevant traffic to the right tool. Profitap has developed two ranges of Packet Brokers; the standard XX-Series and the advanced X2-Series.



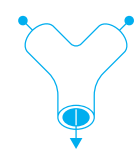
Load Balancing

Balance traffic over multiple monitoring and security tools



Filtering

Only send actionable data to each of the connected tools



Aggregation

Aggregate traffic coming from multiple incoming links



Replication

Replicate traffic to multiple monitoring and security tools

- Aggregation, replication, filtering, load balancing (any-to-any, any-to-many, many-to-many)
- Local and remote management (CLI, GUI, SNMP, Syslog)
- Redundant, hot-swappable PSUs and fan modules available in AC or DC version
- Powerful filtering (layer 2–4, overlapping) VLAN Tagging
- Flexible role-based access
- All models have a 1U footprint 10G, 25G, 40G, 100G traffic monitoring (fan-in/fan-out possible for more options)
- XX-Manager remote management software included
- TACACS+ authentication

XX-SERIES



XX-32G DISTRIBUTED TAP

Ref: XX-32G

The XX-32G is an entry-level packet brokering solution. It provides 4 x 1G SFP ports + 2 x 10G SFP+ ports. It accepts modules for additional port options, and one passive TAP. A portable model of the XX-32G distributed TAP is also available.

Available Modules:

- SFP SPAN module
- Copper SPAN Module
- In-line Copper Module
- SPAN / In-line mix Copper module



XX-1800G

Ref: XX-1800G

The XX-1800G comes with two different port licenses:

- Economy license: 24 x 25G SFP28 ports + 2 x 100G QSFP28 ports
- Full ports license: 48 x 25G SFP28 ports + 6 x 100G QSFP28 ports



XX-2800G

Ref: XX-2800G

The XX-2800G comes with two different port licenses:

- Economy license: 24 x 25G SFP28 ports + 8 x 100G QSFP28 ports
- Full ports license: 48 x 25G SFP28 ports + 16 x 100G QSFP28 ports



XX-3200G

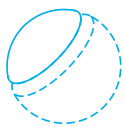
Ref: XX-3200G

The XX-3200G comes with two different port licenses:

- Economy license: 16 x 100G QSFP28 ports
- Full ports license: 32 x 100G QSFP28 ports

X2-SERIES NETWORK PACKET BROKERS

Network Packet Brokers optimize the performance of network analysis and security tools. With a centralized position between the network and the monitoring tools, they remove blind spots and deliver only the relevant traffic to the right tool. Profitap has developed two ranges of Packet Brokers; the standard XX-Series and the advanced X2-Series.



Packet Slicing

Remove payload that is irrelevant to network monitoring and security analysis, conserving disk space and load on capture devices.



Timestamping

Leverage accurate timing information for accurate forensic analysis, legal and criminal investigation.



GTP IP Filtering

Filter by IP in GTP sessions based on information contained in the data stream, identifying source and destination.



ERSPAN Tunneling & De-Tunneling

Integrate the X2-3200G as a single, centralized point for ERSPAN stripping in a new or already existent monitoring system based on data ERSPAN encapsulation.

All XX-SERIES Features plus:

- Packet slicing
- GTP IP filtering
- GRE tunneling & de-tunneling
- VXLAN de-tunneling
- ERSPAN stripping
- Timestamping
- Deduplication



GTP Correlation

Stateful detection of mobile data sessions using subscriber ID (IMSI), to filter, replicate, and forward to the appropriate monitoring tools.

X2-3200G-LIC-G
X2-6400G-LIC-G



Packet Deduplication

Optimize network efficiency and traffic storage eliminating redundant packet copies.

X2-3200G-LIC-D
X2-6400G-LIC-D

X2-SERIES



X2-3200G

Ref: X2-3200G

The X2-3200G comes with two different port licenses:

- Economy license: 16 x 100G QSFP28 ports
- Full ports license: 32 x 100G QSFP28 ports



X2-6400G

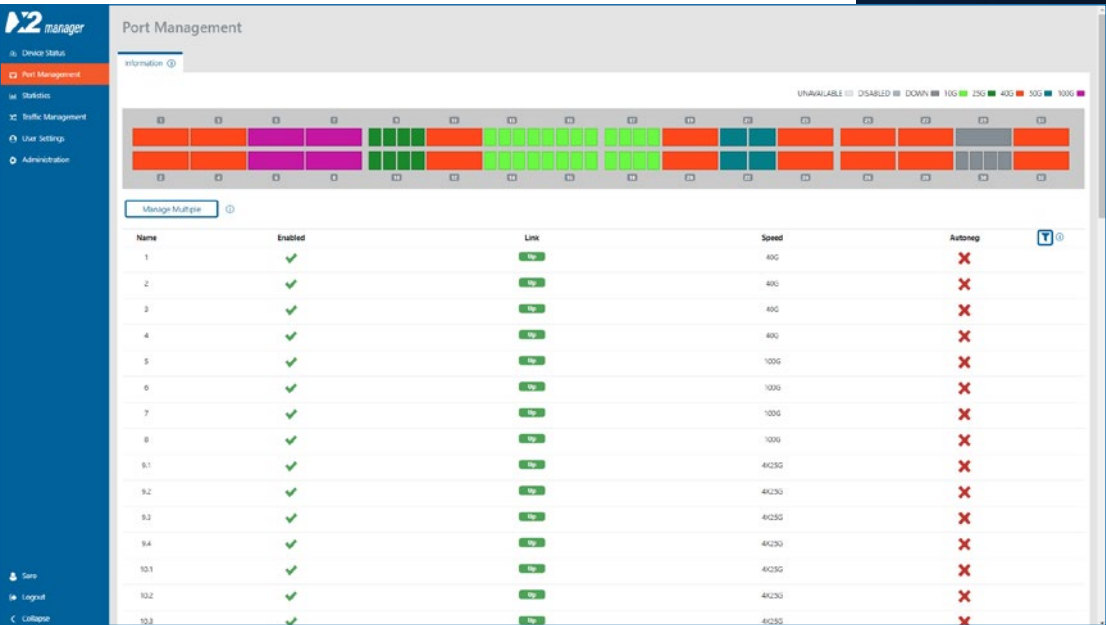
Ref: X2-6400G

The X2-6400G comes with 64 x 100G QSFP28 ports in a 2U footprint.

XX & X2 SERIES MANAGEMENT

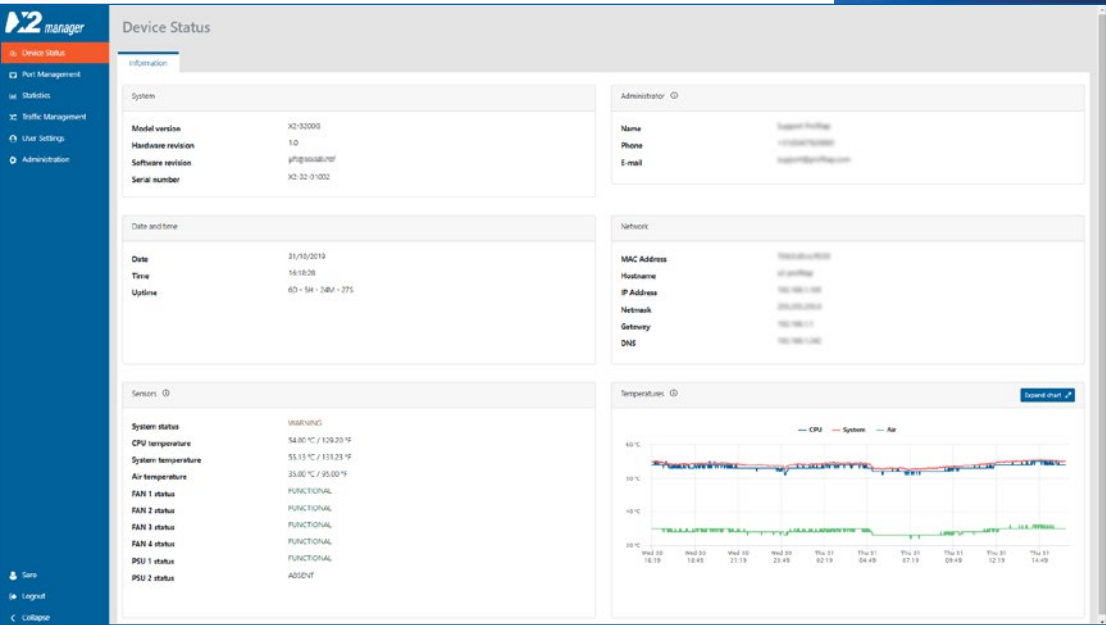
XX & X2-Manager are web-based interfaces that allow the user to configure and monitor the behavior of a Profitap Network Packet Broker. This interfaces are based on a web application, allowing users to easily access to it from any OS or platform.

- Full control over 1GbE, 10GbE, 25GbE, 40GbE and 100GbE network traffic for monitoring thanks to the intuitive GUI.
- Multiple filter rules per port in any combination for various routing, filtering, duplication or replication and many more options can be configured by the GUI to allow instant adaptation to all kind of analysis.
- Storage of multiple rule set configurations that allow instant rule set changes to ease meeting the current requirements.



Port Management

Port management offers instant overview of port status and speed. Users control the configuration of all QSFP modules, where each module offers additional information in the specific status section.



Device Status

Device status offers a quick overview of operational statistics related to the packet broker hardware. Measured temperatures are recorded with a history of 72 hours, to allow filtering back in time on temperature statistics.



Port Statistics

Port statistics displays and monitors the statistics counter for each of the device interfaces. Users can view or export this information for a later analysis. It is also possible to easily compare the traffic bandwidth on each port.

PROFISHARK

THE LATEST IN ETHERNET FIELD TROUBLESHOOTING

ProfiShark is Profitap's family of powerful, compact Ethernet troubleshooters dedicated to straightforward network monitoring, capture, and analysis. Based on FPGA and USB 3.0, the ProfiShark series is a perfect blend of performance and flexibility.

A ProfiShark is equivalent to an aggregator tap and two NICs, the only additional hardware required being a laptop or desktop PC with a free USB 3.0 port.

As Profitap listens to the needs of field engineers, the ProfiShark series is constantly evolving, and currently consists of the ProfiShark 100M, 1G, 1G+, 10G, and 10G+.



Long-term Traffic Capture

ProfiShark long-term capture solution is designed with flexibility in mind. Combined with a NAS for storage tailored to your specific needs, the long-term capture feature makes it easy to catch intermittent problems in the act.



PROFISHARK LONG-TERM
TRAFFIC CAPTURE SETUP

PROFISHARK OVERVIEW

- USB powered, no adapter required
- Lightweight and portable
- Hardware aggregation
- SPAN and In-Line modes
- 8 ns hardware timestamping
- Capture any type of frames
- Low level error and bandwidth monitoring
- Hardware filtering, deep packet inspection
- CRC error capture
- Packet slicing
- Non-intrusive, fail-safe monitoring
- Real time statistics
- Direct capture to disk
- Very low CPU usage
- Quick setup and easy to use
- Invisible to the network

COMPATIBILITY

- Wireshark
- ClearSight
- OmniPeek
- Packetizer
- OptiView
- NetSpector
- NetDecoder
- Ethertest

And many more...



PROFISHARK 1G



PROFISHARK 10G

The ProfiShark 1G and 10G can capture any traffic, frames of any size and type, in-line or SPAN, for analysis and monitoring with Wireshark, or any major software analyzer. The included ProfiShark Manager software provides additional information, statistics, and configuration and capture options.



PROFISHARK 1G+



PROFISHARK 10G+

The ProfiShark 1G+ and 10G+'s GPS/GLONASS function can tag packets with accurate UTC timestamps. The ProfiShark 1G+ and 10G+ can also receive or generate a PPS signal, enabling accurate timestamp synchronization in various topologies.



PROFISHARK 100M

The ProfiShark 100M is designed for the capture of 10/100M Ethernet traffic. It is the perfect tool for troubleshooting Real-Time Industrial Ethernet protocols. This pocket-sized portable traffic capture device gives you all the flexibility and ease of use you require for the monitoring of industrial networks.

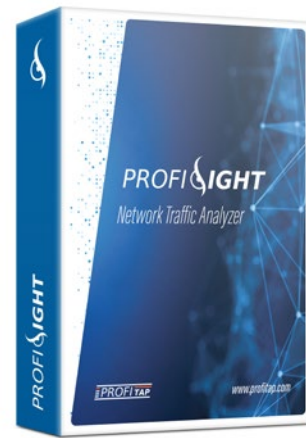
PROFISIGHT

NETWORK TRAFFIC ANALYZER FOR NETWORK TROUBLESHOOTING AND PERFORMANCE MONITORING

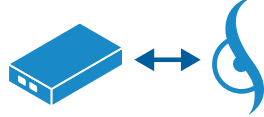
ProfiSight is a web-based network traffic monitoring application, giving a complete insight of the network and infrastructure, providing remote capturing, seven layers (OSI model) overview, flow-based analysis, APM, trend reports and much more.

It is designed and optimized for fast indexing and filtering large amounts of network traffic instantly, greatly optimizing your workflow and reducing time spent on troubleshooting.

ProfiSight provides visibility and diagnostics across your distributed and dynamic applications such as DNS, NETBIOS, NTP, FTP, SSH, SNMP, most of the conventional user applications and many others.



REAL-TIME ANALYTICS



FULL PROFISHARK INTEGRATION



EASY DEPLOYMENT

● SIMPLE, FAST AND ACCURATE ISSUE IDENTIFICATION

Get immediate insight into network traffic and adjust your resources for optimal performance and quickly spot network issues.

● REMOTE OFF-SITE DIAGNOSIS AND CAPTURE (PROFISHARK)

Connect to multiple ProfiShark capture points at once and combine the captured files into a single view for analysis.

● REAL-TIME ANALYTICS

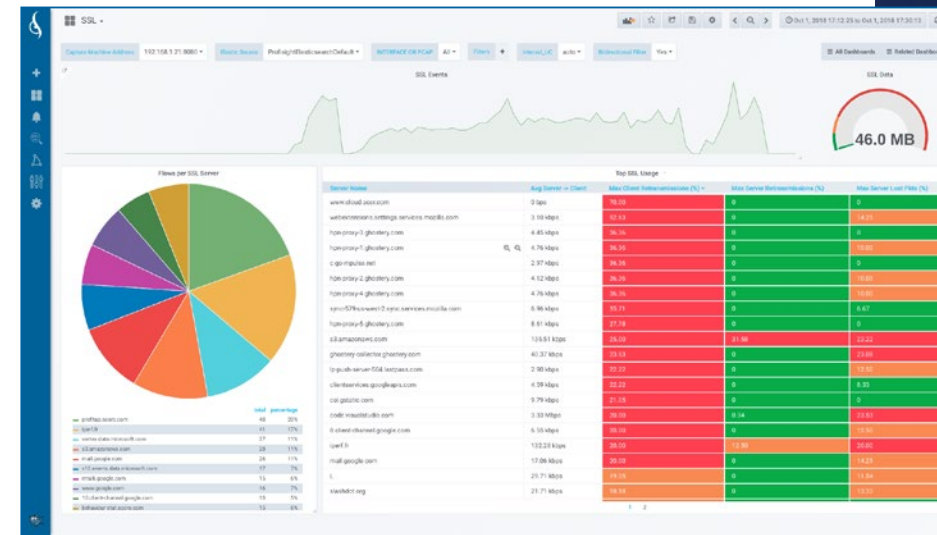
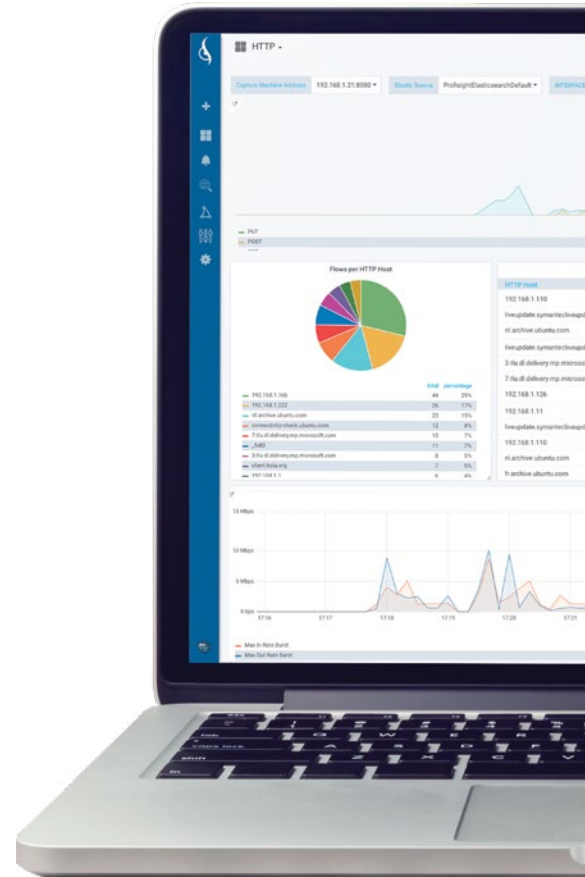
ProfiSight is designed for fast indexing of traffic capture and will help you improve your monitoring workflow and save valuable troubleshooting time.

● CUSTOMIZE YOUR VIEW OF THE NETWORK (DASHBOARDS AND PANELS)

Besides a list of predefined dashboards, ProfiSight allows users to define and create dashboards to their own requirements.

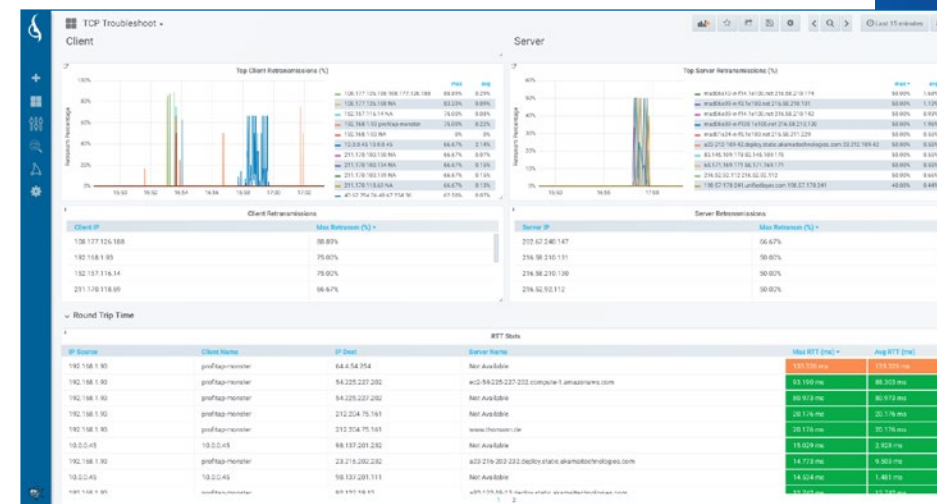
● USE THE POWER OF TRAFFIC CAPTURE WITH PROFISHARK

Good analysis starts with a reliable capture of the network traffic. ProfiShark gives you exactly that with line-rate and fail-safe performance.



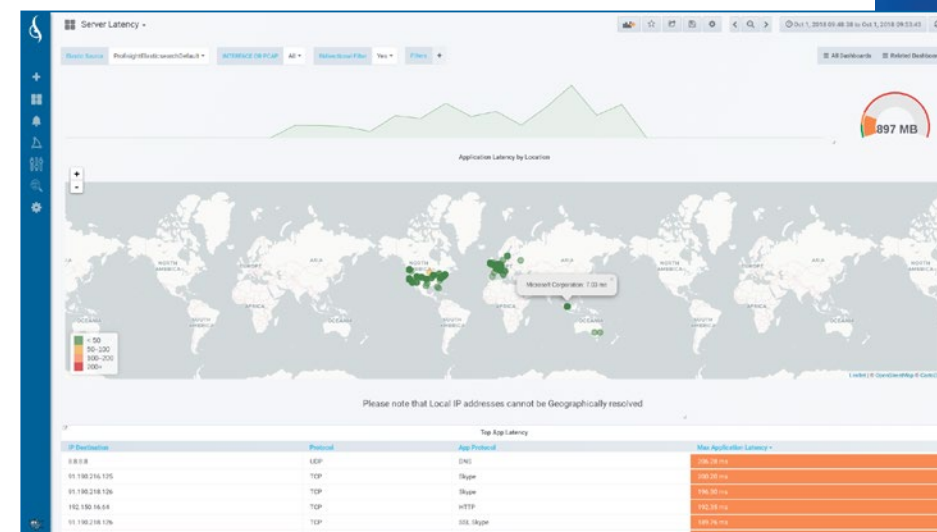
Application Performance Monitoring

Get an overview or filter on your preferred application. I.e., HTTP, SSL or DNS Dashboards.



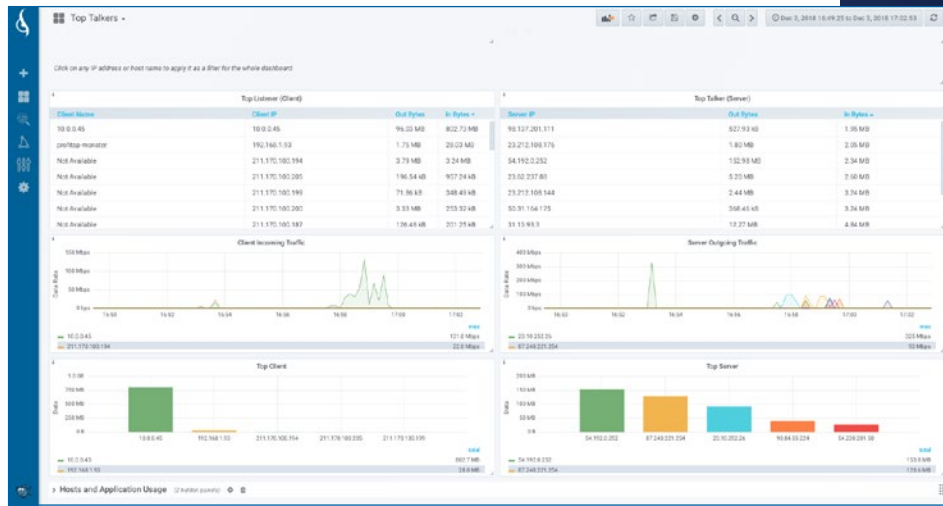
TCP Troubleshooting

Pinpoint the root cause of your problem with TCP Dashboards, such as retransmissions, lost packets, server congestion, ports usage, and more.



Latency Detection

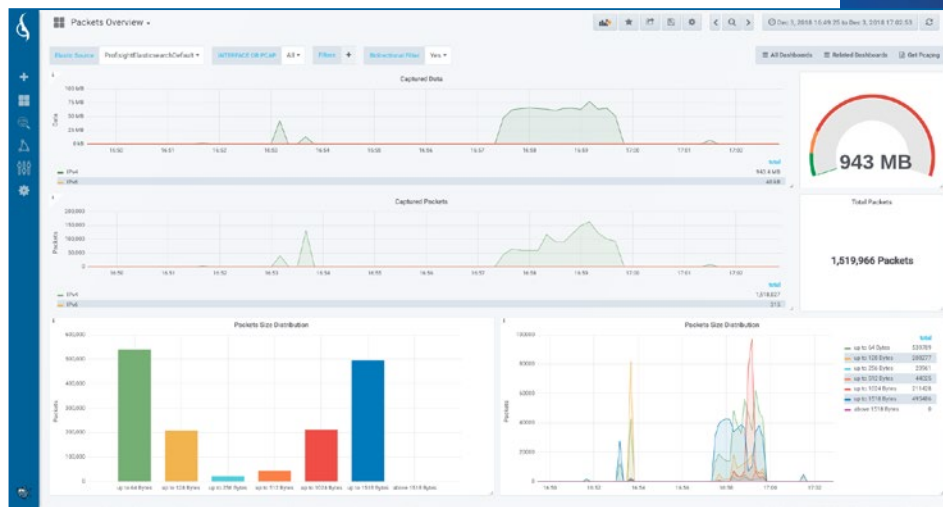
Application latency per server, including GeoIP resolution in map.



Bandwidth Usage

Bandwidth usage per host, flow, port and Microburst detection.

Goodput metrics, Packet and traffic statistics.

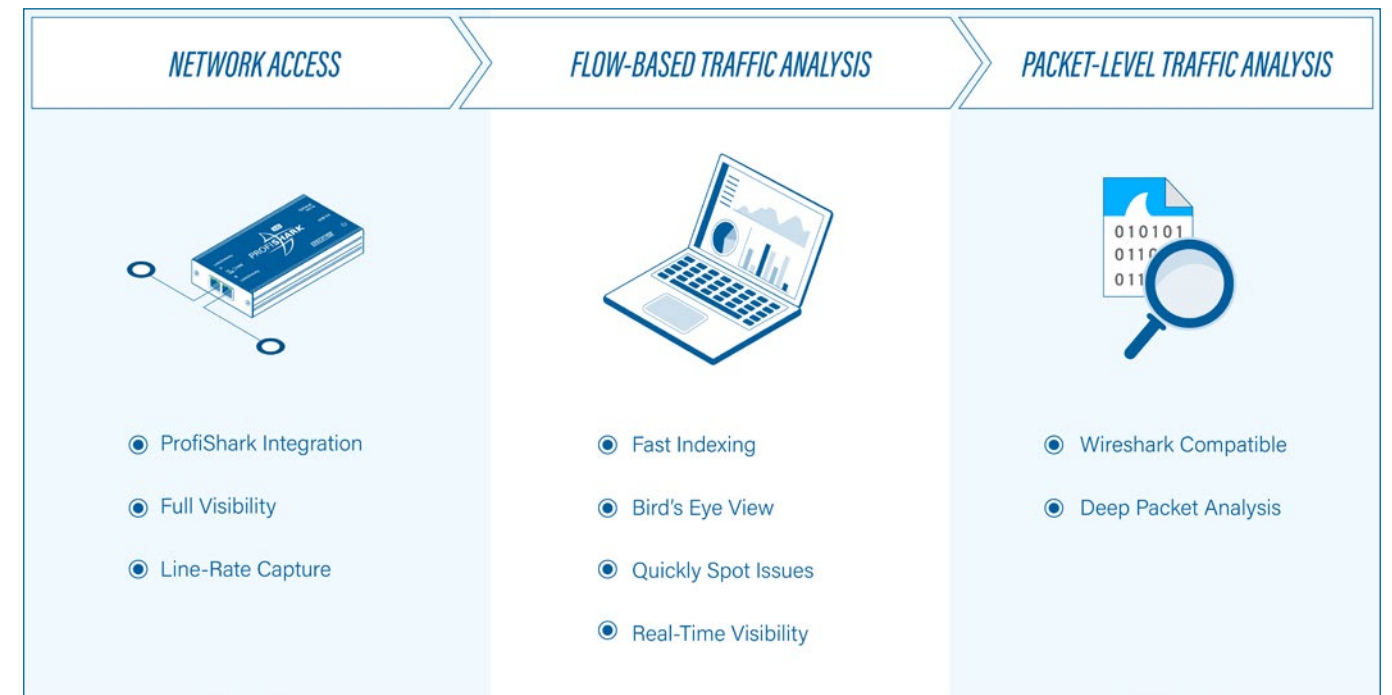


Top Talkers

Top client / servers in your network, sorted by packets, bandwidth consumption or protocol.

CAPABILITIES

- ▶ Bandwidth utilization, microbursts
- ▶ Statistics per host, IP and per L4 and L7 Protocols
- ▶ TCP indicators (lost packets, retransmissions, zero windowing, etc)
- ▶ Application latency metrics, per server and location
- ▶ Application-specific dashboards
- ▶ Flow metrics per interface



INTEGRATION WITH PROFISHARK

ProfiSight extracts and analyzes metadata directly from PCAP files. When combined with the capture performance of the ProfiShark portable capture devices, ProfiSight offers the best of two worlds: quick overview with metadata and full packet capture.

With ever increasing link speeds, ProfiSight helps you analyze large amounts of data, allowing you to quickly start your analysis from a bird's-eye view, and to drill down to packet-level details whenever you need more information.



SYSTEM REQUIREMENTS

Hardware	Recommended: Intel Quad 3.0 GHz, 8GB Ram or more Minimum: Intel Core Duo 2.4 GHz, 8 GB Ram
Network	Fast Ethernet Gigabit network adapter
Disk Space	350 MB Installation 5 GB minimum disk space required for first captures Long-term captures limited by disk space
Devices	Up to 6 ProfiShark devices can be used to capture simultaneously
OS	Windows 10 (64-bit) Linux Ubuntu Family (64-bit)

IOTA brings a complete network analysis and troubleshooting solution for both 1G and 10G networks. With fully integrated traffic capture, storage and analysis capabilities in a portable form-factor, it can be deployed easily anywhere in the field, but also used as a rack-mounted data center solution.

Designed to be easy to use, IOTA can be set up and activated without extensive IT knowledge. Once in place, the analysis can be performed remotely through IOTA's HTTP interface with various dashboards that help you drill down to the root cause of a network issue as fast as possible.

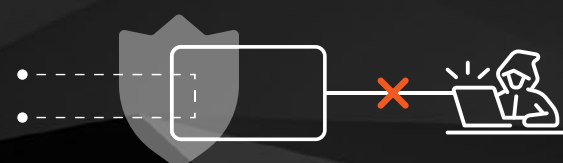


IOTA 1G



IOTA 10G

The IOTA 1G and 10G can capture and store any traffic internally, regardless of the packet rate and size, in-line or SPAN, for analysis and monitoring with its own powerful traffic analysis software, providing the ability to perform analysis of the raw PCAP data by extracting metadata.



IOTA's In-line circuit is isolated from the other interfaces, internal storage and analysis processing. This makes sure your network stays safe from outside attacks while still enabling full network visibility and analysis.

IOTA OVERVIEW

- Highly portable
- 1G/10G monitoring
- 1G/10G wire speed packet pre-processing
- SPAN and In-line modes
- 8 ns hardware timestamp
- PoE powered through management port
- PoE pass through
- Remote access and management
- 1 TB internal storage
- Packet slicing
- Hardware filtering (IOTA 10G)

Probe

IOTA innovates the way you troubleshoot networks. As an ultra portable all-in-one solution, it can be deployed quickly in the network to start the real-time monitoring; either in a dedicated spot in a data center or office, or in the field where it can be accessed remotely – saving you the travel cost and time to an offsite location.



Capture

With great capture performance and internal storage of 1TB, the raw network data is stored directly on the device, regardless of the packet rate and size. To narrow down the traffic you want to capture, powerful hardware filters are available.



Analyze

IOTA integrates its own powerful traffic analysis software, providing the ability to perform flow-based analysis of the PCAP files with various dashboards, like Application Performance Monitoring, Bandwidth Usage, Latency, Top Talkers, TCP Troubleshooting, and more.

REAL TIME TRAFFIC ANALYSIS

Out of the box, IOTA comes with its own integrated software to help analyze the captured data in real-time. By extracting metadata from the captured files, IOTA is able to give you a real-time visual overview of what is happening on your network. IOTA dashboards help you filter large amounts of network traffic instantly, greatly optimizing your workflow and reducing time spent on troubleshooting.

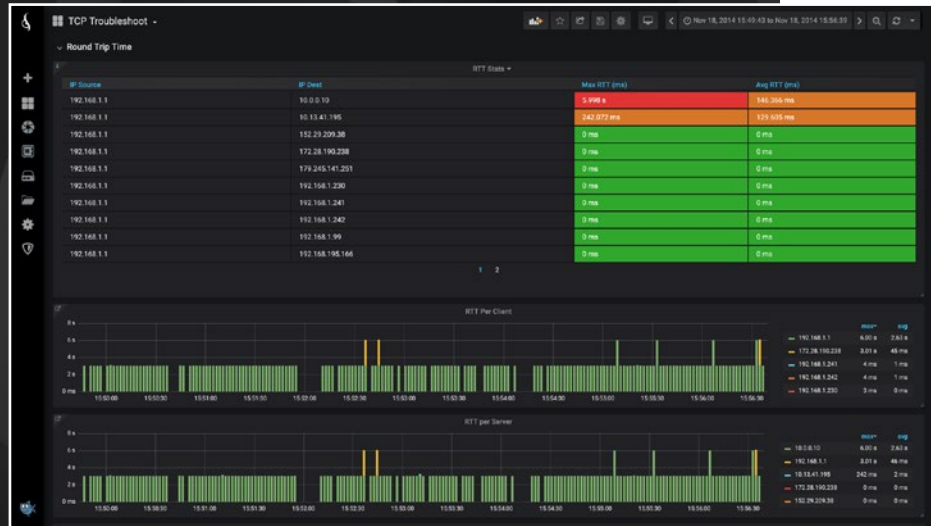


A selection of available dashboards:



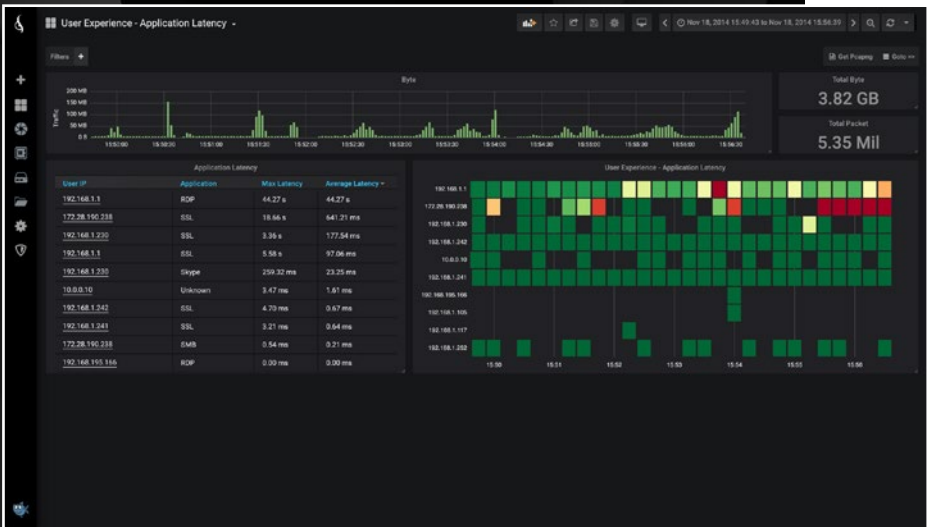
HOME DASHBOARD

A quick overview of Top Talkers and client-server data transfers.



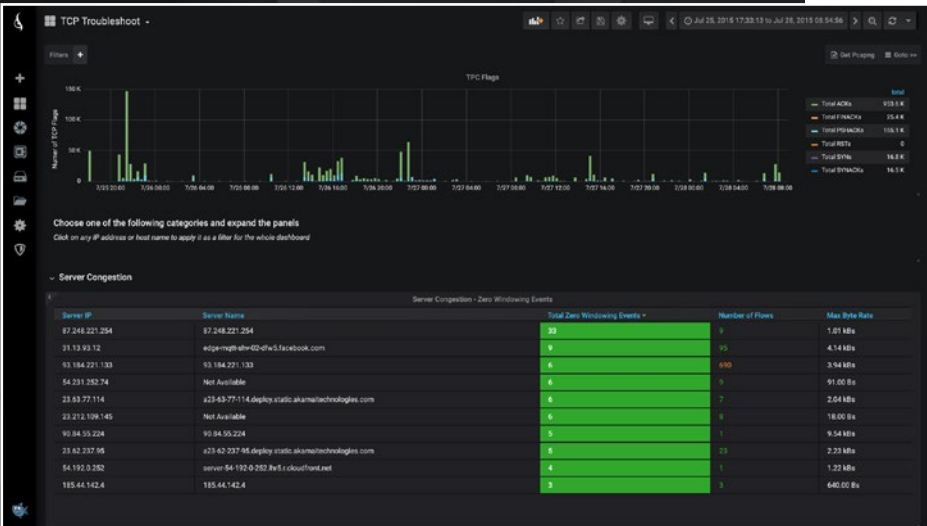
TCP ROUND TRIP TIME

RTT triggers per flow, server, and client. TCP flag statistics.



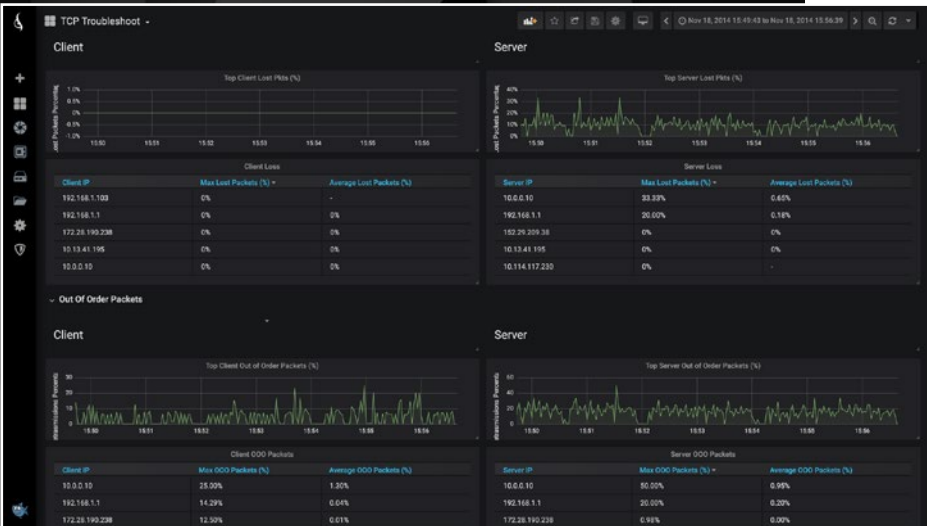
USER EXPERIENCE APPLICATION LATENCY

Application latency from the client IP perspective.



TCP SERVER CONGESTION

An overview of zero windowing events per server over time, detecting when a server is saturated. Includes statistics of number of flows per server.



TCP OUT-OF-ORDER AND LOST PACKETS

Analyze application and network traffic based on Flow ID, Client IP, Server IP, Protocol, etc.

FOR MORE INFORMATION:



www.profitap.com



[profitap-international](https://www.linkedin.com/company/profitap-international)



[@Profitap](https://twitter.com/Profitap)



[Profitap](https://www.facebook.com/Profitap)



[Profitap HQ B.V.](https://www.youtube.com/Profitap)

BRINGING CLARITY INTO NETWORKS.
ANYTIME. ANYWHERE.



Profitap develops and manufactures high-quality network monitoring solutions. Our high-density data center TAPs and field service troubleshooters provide complete, comprehensive visibility and access to your network 24-7-365.

Profitap's non-intrusive and fail-safe design ensures our TAPs provide the utmost security for networks and monitoring appliances.

We have developed our products to be market leading in the industry where the definition of excellence is constantly being challenged. With more than 1,000 clients from 55 countries, Profitap has become an integral solution for major businesses, many of which are Fortune 500 companies.

PROFITAP HQ B.V.
HIGH TECH CAMPUS 9
5656 AE EINDHOVEN
THE NETHERLANDS

sales@profitap.com
www.profitap.com

The information in this guide is not guaranteed to be complete, and may contain technical or typographical errors. Profitap assumes no responsibility for any inaccurate information in this guide.

Copyright Profitap, 01/2020, v1.5