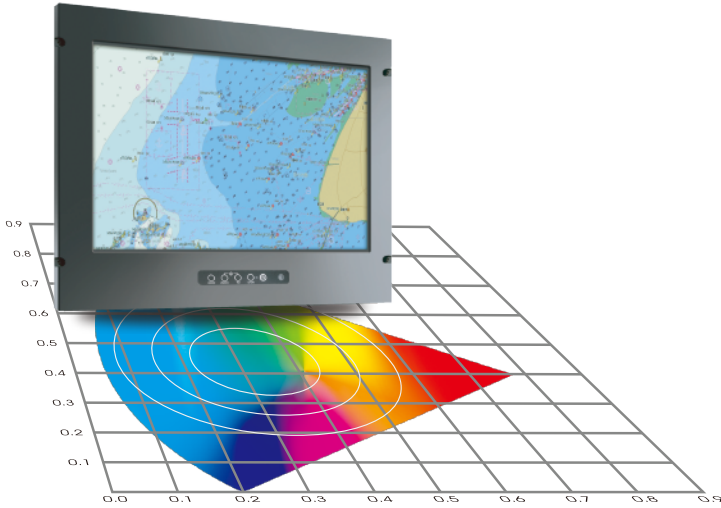


Marine Panel PC (OSD front), 17", 1280 x 1024, support, Intel® Core i3 / i5 / i7 and Intel® Atom Baytrial

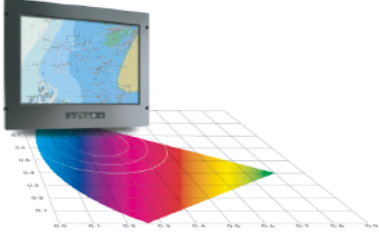

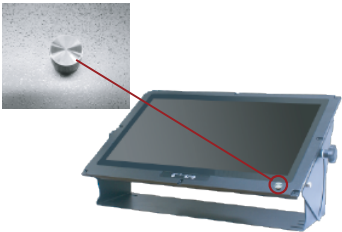


Features

- Housing with powder coating, IP65 front, IP54 rear
- Color calibration to meet the ECDIS display standard (IEC 61174) is available by request. Support mode Date / Dusk / Night.
- 9~36VDC wide voltage input (Isolated DC-DC voltage regulator built-in) or Option of AC Version (90-260V , 50/60 Hz, auto-sensing)
- Conformal Coating
- Anti-Shock and Vibration enhanced
- Option with stand / VR knob / ECDIS Function

| Boards | Model | CB0J07 | CB0J08 |
|---------------------|----------------------------|---|---|
| Systems | System | Intel® Atom Baytrial | Intel® Core i3 / i5 / i7 Processors |
| | System / Graphic Chipset | Intel® Gen7 Intel Graphics DX 11*, OGL3.2 | Intel® HD Graphics (By CPU); Shared Memory |
| | System Memory | Dual Channel DDR3 1333 MHz SDRAM, Max up to 8GB | 2 x DDR3 1333/1600MHz SO-DIMM Slot (up to 16GB) |
| | HDD | 2 x SATA | 2 x SATA |
| | I/O port | 1 x VGA, 1 x HDMI | 1 x VGA, 1 x HDMI |
| | | 2 x USB 2.0, 2 x USB 3.0 | 2 x USB 2.0, 4 x USB 3.0 |
| | | 3 x COM (RS232/422/485) | 1 x COM (RS232) |
| Expansion | 1 x Mini PCI-e | 1 x Mini PCI-e | |
| Panel | Cell Type / Glass Surface | TFT LCD / Black Anti-Glare, low reflection coating | |
| | Aspect Ratio / Size | 4 : 3 / 17" viewable diagonal area | |
| | Active Area / Pixel Pitch | 337.92(H) x 270.34(V) mm / 0.264(H) x 0.264(V) mm | |
| | Native Resolution / Colors | 1280(H) x 1024(V) / 16.7 M | |
| | Brightness / Contrast | 250 cd/m ² (typ) / 800 : 1 | |
| | Response Time | ≤ 5 ms | |
| | Viewing Angle (typical) | H. 170° (- 85° ~ + 85°) , V. 160°(- 80° ~ + 80°) | |
| | Light Source | LED backlight, Long life, 35,000 hrs (typ) | |
| Power | Power Input | 77.5 Watt, <1 Watt | |
| | Power Consumption | 9-19V DC-In (4-pin ATX PWR Con) / ATX PWR (24+4 pin) | |
| Operating Condition | Temperature / Humidity | 0°C ~ 50°C (32°F ~ 122°F) , 10% ~ 90% (no condensation) | |
| Dimensions | Physical | Please refer to Drawing | |
| | Carton | W x H x D = TBD | |

| Options | Touch | Video | Enhanced Panel | Others |
|---------|------------------|----------------------|--------------------------|------------------------------|
| | Resistive touch | SV + AV | Panel with LED backlight | Digital Signage(Stand alone) |
| | Capacitive touch | SV + AV + AV_Looping | High brightness panel | Networking Digital Signage |
| | SAW touch | SV + AV | Wide Temperature | Motion Sensor |
| | Infrared touch | | Sunlight Readable | Light Sensor |
| | Protected glass | | | Auto-Dimming |

| Options | ECDIS | Stand | VR Knob |
|---------|---|--|---|
| |  |  |  |