

### FG-7000 Digital Force Gauge

**The new FG-7000 Series digital force gauges are loaded with functionality to simplify your compression and tension testing needs.**

The multiple-language FG-7000's provide menu programming for easy selection and set-up of the instrument to your desired requirements. Three modes of operation are selectable: Track mode for live readings, Peak mode for displaying the peak reading that remains until a higher peak is sensed, and Auto Peak mode which is similar to Peak mode except the peak on the display will reset only after a programmed time period. Programmable limits provide a quick visual and audible indication if a test passed or failed on the LCD. In addition, the comparator output can be set up for integration of the instrument into your quality system for repetitive testing such as on a production line.

These high-tech instruments can easily data log a reading at the push of a button for simple data acquisition, or be set to continuous data storage. Data can be viewed on the screen, sent to the optional printer, or loaded to be analyzed and graphed on the free software program. The 1,000 point memory with definable groups allows for multiple tests to be recorded and easily separated upon loading.

The FG-7000's robust housings are designed to fit perfectly in the operator's hand for portable testing. The large backlit, 180° auto-reversible display, compression/tension icons, combined with the dual labeled key pad allows for instant switching from push to pull testing for portable or test stand applications. Models are available from 1 lb to 220 lb ranges providing a large offering for various applications such as, incoming quality inspection, finished goods testing, R&D or almost any portable or force stand testing requirement.



**FG-7000 with Accessories  
in Protective Carrying Case**

#### Features

- 1000 Hz Sample Rate combined with  $\pm 0.2\%$  F.S. accuracy provides fast sampling producing great resolution and more accurate results
- Three mode operation: Track, Peak & Auto-Peak
- 180° Auto-reversible display, tension/compression icons, and dual printed keypad allows usage as a portable gauge or mounted upside down on a test stand
- Programmable High & Low Limits allow for instant visual and audible indication of pass or fail testing.
- 1000 point data collection capability can be viewed on display, sent to optional printer, or uploaded to software package via USB or RS-232 Serial Port for further analysis
- Rugged, ergonomic die cast aluminum construction allows usage in demanding applications
- Comparator output function provides user with easy Pass/Fail testing system integration capabilities
- Multi-language and engineering units selection provides flexible user comfort
- Field Calibration capability eliminates need to send to lab
- Calibration Certificate included along with popular adapter attachments
- Free Datalogging/graphing software available for free download on website

#### NIDEC-SHIMPO CORPORATION

## FG-7000 Specifications

<b>Accuracy</b>	± 0.2% F.S.
<b>Selectable Units</b>	mN, N, gf, kgf, ozf, and lbf. (Depending on Range)
<b>Overload Capacity</b>	150% of F.S. (LCD flashes beyond 110% of F.S.)
<b>Measurement Method</b>	Peak, Autopeak or Track Mode
<b>Data Sampling Rate</b>	1000 Hz
<b>Display</b>	2.1 x 1.6" (54 x 40 mm); dot matrix LCD with LED Backlight
<b>Display Update Rate</b>	10 times/second
<b>Resolution</b>	See chart
<b>Memory</b>	1000 data
<b>Set Point</b>	Programmable high and low limits
<b>Battery Indicator</b>	Display flashes battery icon when battery is low
<b>Power</b>	3.6 V dc 800 mA Ni-MH rechargeable batteries
<b>Battery Life</b>	Approximately 16 hours continu- ous use per full charge
<b>Charger / Adaptor</b>	Universal USB/BM charger, Input: 110 ~ 240 V ac
<b>Temperature Effects</b>	<0.054% per °F (0.03% FS per °C)
<b>Operating Temperature</b>	14 to 104°F (-10 to 40°C)
<b>Humidity Limit</b>	5 to 95%
<b>Housing</b>	Aluminum
<b>Outputs</b>	USB, Serial Port RS-232, High & Low Limit NPN
<b>Humidity Limit</b>	5 to 95%
<b>Dimensions</b>	5.7 x 2.9 x 1.4" (145 x 73 x 35.5 mm)
<b>Product Weight</b>	1.5 lb (0.7 kg)
<b>Package Weight</b>	2.8 lb (1.3 kg)
<b>Certification</b>	CE
<b>Warranty</b>	1 year
<b>Included Accessories</b>	AC Adaptor/Charger, USB cable, calibration cert., 6 attach- ments: hook, flat tip, conical tip, chisel tip, notched tip, extension shaft, carrying case

## Ordering Details

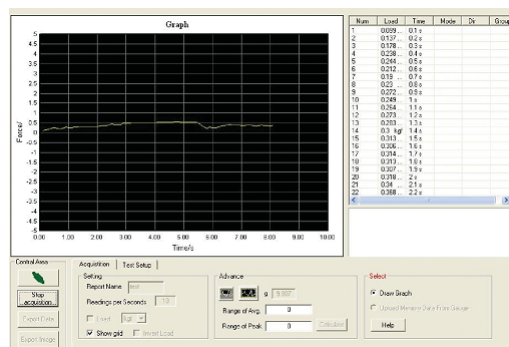
Model	mN	N	gf	kgf	ozf	lbf
<b>FG-7002</b>	Capacity	5000.0	5.0000	500.00	-	18.000
	Resolution	0.5	0.0005	0.05	-	0.0001
<b>FG-7003</b>	Capacity	10000	10.000	1000.0	1.0000	35.00
	Resolution	1	0.001	0.1	0.0001	0.0005
<b>FG-7004</b>	Capacity	20000	20.000	2000.0	2.0000	70.00
	Resolution	5	0.005	0.5	0.0005	0.01
<b>FG-7005</b>	Capacity	50000	50.000	5000.0	5.0000	180.00
	Resolution	5	0.005	0.5	0.0005	0.01
<b>FG-7006</b>	Capacity	-	100.00	10000	10.000	350.0
	Resolution	-	0.01	1	0.001	0.005
<b>FG-7007</b>	Capacity	-	200.00	20000	20.000	700.0
	Resolution	-	0.05	5	0.005	0.01
<b>FG-7008</b>	Capacity	-	500.00	50000	50.000	1800.0
	Resolution	-	0.05	5	0.005	0.01
<b>FG-7009</b>	Capacity	-	1000.0	-	100.00	3500
	Resolution	-	0.1	-	0.01	1

## Accessories

<b>FG-7CHRG</b>	Charger
<b>FG-7USB</b>	USB Cable
<b>FG-HK</b>	Hook Adapter (M6)
<b>FG-7FL</b>	Flat Adapter (M6)
<b>FG-7CN</b>	Cone Adapter (M6)
<b>FG-7CL</b>	Chisel Adapter (M6)
<b>FG-7GV</b>	Notched Adapter (M6)
<b>FG-7RD</b>	Extension Rod (M6)
<b>FG-PRINT</b>	Portable Thermal Printer

## EDMS Data Acquisition Software

Allows full testing of FG Series Force Gauges with live analysis of the test results. Users can set a delay or a time period for the test data to record as well as begin or end if a load threshold is reached. The load can be inverted so the graph shows the resultant force in the direction desired. Average and peak readings are automatically calculated, but the user can zoom in on a section of a graph and recalculate the new average and peak over the selected portion of the test. Besides acquiring live data, the EDMS program can also upload previously stored readings from the gauge. Additionally, the software provides the ability to easily save the data set to a spreadsheet file, plus save the resultant graph as a photo for later review.



**Data Management Program**  
Available from Website

## NIDEC-SHIMPO CORPORATION

(ES) Equipements Scientifiques SA - Département Bio-Tests & Industries - 127 rue de Buzenval BP 26 - 92380 Garches  
Tél. 01 47 95 99 90 - Fax. 01 47 01 16 22 - e-mail: bio@es-france.com - Site Web: www.es-france.com