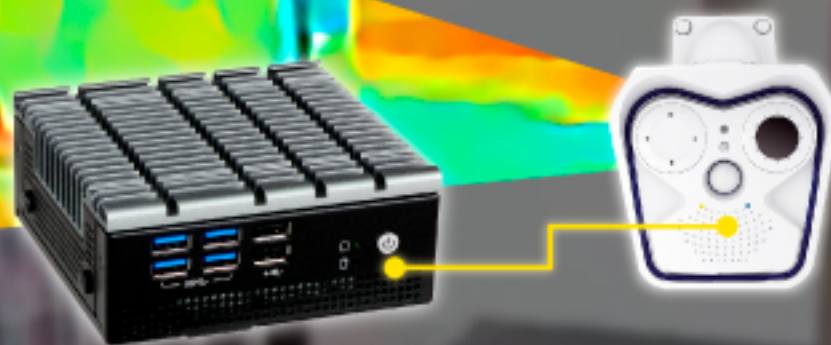


# DFI

Design For Innovation



## Smart Thermal Imaging Solution

DFI's iMage Smart Thermal Imaging System provides automatic fever detection, recording and sending alarm as well as reducing queue-up and staff allocated for entrance control.



**EB100-KU**  
Thermal Imaging System

**VMS**  
Embedded

- Alarm Functions
- Quick Search
- Heterogeneous Integration

### iMage-E

Entry-level



EB100-KU pairs with Thermal Camera

1. Up to 3 detection areas (any over-heat objects can be detected)
2. Detection distance: 1 to 1.5m

### iMage-M

Advanced



EB100-KU pairs with Thermal Camera

1. Up to 20 detection areas (any over-heat objects can be detected)
2. Detection distance: 2.5 to 5m
3. Extended Applications: fire detection, electrical fence, etc.

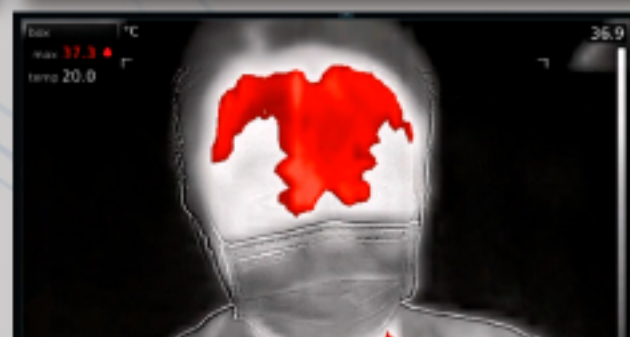
### iMage-F

Advanced Multi-face



EB100-KU pairs with Thermal Camera

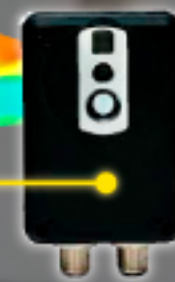
1. Face specific version for 1 to 10 detection
2. Detect human face, up to 10 people at once
3. Detection distance: 0.8 to 1.5m





# DFI

Design For Innovation



## iMage - E

DFI's Smart Thermal Imaging System iMage-E is an entry-level package for single-person fever detection, featuring DFI's EB100-KU embedded computer and a thermal camera that simultaneously detects up to 3 areas within 1 to 1.5 meters.

### Single-Person Fever Detection

Resolution		RGB: 640 x 480 ; IR: 80 x 60 pixels
Image Streaming Format		Motion JPEG / MPEG / H.264
Min. Illumination		Minimum 10 Lux without illuminator
Encapsulation		IP67
Thermal Sensitivity/NETD		<0.10°C@+30°C (+86°F)/100mK
Accuracy		±0.3°C (<1m) ±0.8°C (1 to 1.5m)
Object temperature range		-10°C to +150°C (14°F to 302°F)
Detection Area		Up to 3 boxes
Image Modes		Thermal, Visual, MSX (IR-image with enhanced detail presentation)
Communication and Power		Ethernet 100Mbps, powered over Ethernet, PoE IEEE 802.3af class 0
Operating Temperature		0°C to +50°C (32°F to +122°F)

Once temperature abnormality is detected, the iMage-E issues real-time alarms — CCTV video pop-up, warning sound, email notification, and etc. The iMage-E, with a friendly UI, provides open APIs to integrate 3rd party systems, and help query information of certain events along with images.

### EB100-KU Box PC

CPU		Intel Core i3-6100U Processor 2.3GHz
Memory		DDR4 2666MHz SODIMM 8GB
System Drive		1 x M.2 2280
I/O		2x HDMI 2.0, 4x USB 3.0, 2x USB 2.0, 2x GbE
Power		12VDC power input
Operating Temperature		-20 ~ 40° C
Operating System		Windows 10 IoT Enterprise 2019 LTSC
Warranty		Long Life Cycle Support, 2 years warranty





# DFI

Design For Innovation

## iMage - M

DFI's Smart Thermal Imaging System iMage-M is an advanced package for multi-person fever detection. Pairing DFI's EB100-KU industrial computer with a dual-lens thermal camera makes it possible to detect 20 areas within 2.5 to 5 meters. It is also future ready for extended security surveillance.

Once temperature abnormality is detected, the iMage-M issues real-time alarms — CCTV video pop-up, warning sound, email notification, and etc. The iMage-M with a friendly UI, provides open APIs to integrate 3rd party systems, and help query information of certain events along with images.



### Multi-Person Fever Detection

Imaging Elements	RGB: 1/1.8" 6M CMOS / line-by-line scan Thermal: uncooled microbolometer (Infrared Range: 7.5 to 13.5μm)
Resolution	RGB: 6 million (3072x2048) Thermal: 336 x 252 pixels
Image Streaming Format	MxPEG / MJPEG / H.264
Min. Illumination	RGB: 0.1 lux, 1/60 second
Thermal Image	Temperature scale or black/white
NETD	Standard: 50mK, <79mK (50mK means that temperature change is 0.05°C)
Accuracy	±0.5°C (2.5 ~ 5m)
Object temperature range	High sensitivity: -40 to 160°C Low sensitivity: -40 to 550°C
Detection Area	Up to 20 boxes
Encapsulation	Body: IP66 / IK06 Lens: IP66 / IK04 (B016 equal to IK06)

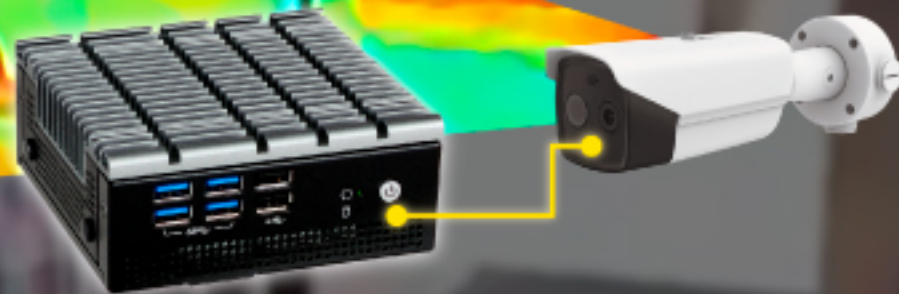
### EB100-KU Box PC

CPU	Intel Core i5 - 6300U Processor 2.4GHz
Memory	DDR4 2666MHz SODIMM 8GB
System Drive	1 x M.2 2280
I/O	2x HDMI 2.0, 4x USB 3.0, 2x USB 2.0, 2x GbE
Power	12VDC power input
Operating Temperature	-20 ~ 40°C
Operating System	Windows 10 IoT Enterprise 2019 LTSC
Warranty	Long Life Cycle Support, 2 years warranty



# DFI

Design For Innovation



## iMage - F

DFI's Smart Thermal Imaging System iMage-F is an advanced package for multi-face fever detection (face detection only). iMage-F pairs DFI's EB100-KU industrial computer powered by Core-i5 CPU with a thermal camera, detecting up to 10 people at once.

### Multi-Face Fever Detection

Resolution	RGB: 2688 x 1520 ; IR: 160 x 120 pixels
Image Streaming Format	H.264 / H.265 / MJPEG
Encapsulation	IP66
Thermal Sensitivity/NETD	<40mK
Accuracy	$\pm 0.5^{\circ}\text{C}$ (0.8 to 1.5m)
Object temperature range	30°C to 45°C
Detect object	Human face temperature, up to 10 persons
Image Modes	Thermal, Visual, MSX (IR-image with enhanced detail presentation)

Once temperature abnormality is detected, the iMage-F issues real-time alarms — CCTV video pop-up, warning sound, email notification, and etc. The iMage-M with a friendly UI, provides open APIs to integrate 3rd party systems, and help query information of certain events along with images.

### EB100-KU Box PC

CPU	Intel Core i5 - 6300U Processor 2.4GHz
Memory	DDR4 2666MHz SODIMM 8GB
System Drive	1 x M.2 2280
I/O	2x HDMI 2.0, 4x USB 3.0, 2x USB 2.0, 2x GbE
Power	12VDC power input
Operating Temperature	-20 ~ 40° C
Operating System	Windows 10 IoT Enterprise 2019 LTSC
Warranty	Long Life Cycle Support, 2 years warranty

