

# Laurell **HL**

## Quality and Control



Wireless control and touch programming

Small footprint, easy installation

Designed for results



[www.laurell.com](http://www.laurell.com)

(ES) Equipements Scientifiques SA - Département Bio-Tests & Industries - 127 rue de Buzenval BP 26 - 92380 Garches  
Tél. 01 47 95 99 90 - Fax. 01 47 01 16 22 - e-mail: [bio@es-france.com](mailto:bio@es-france.com) - Site Web: [www.es-france.com](http://www.es-france.com)

# Putting Control at your Fingertips

## Improving the World's Most Successful Spin Processor

### Everything You Need

Motors, electronics, and software designed and custom built from the ground up to eliminate unpredictability

- Large bowl-shaped process chamber to reduce turbulence and eliminate splash back
- A seamless copolymer housing and no exposed metal allows use of a wider range of chemistry and more flexible processing
- Chemically resistant lids, solid construction, system interlocks, and independent testing ensure operator safety
- Everyday ergonomics means ease of access to the chuck and process chamber, no need to drop your substrate on to a chuck
- ETL® certified to UL® and CSA® standards

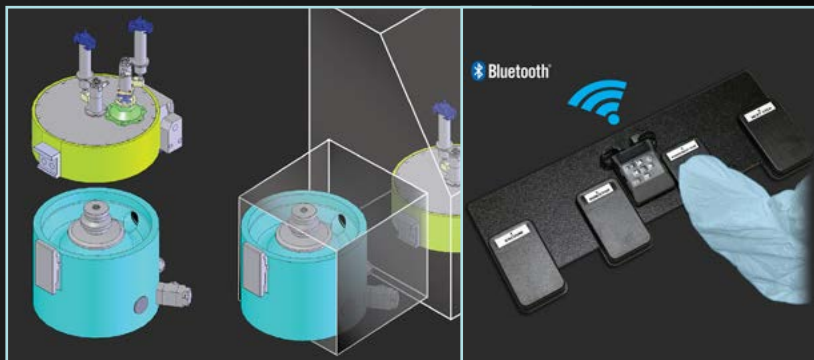


### All Your Controls, No Wires Attached

- You have complete control of your spin processor through a Bluetooth® wireless connection to a Windows® tablet running our exclusive Laurell Touch Interface
- Creating new recipes, or editing existing ones, is easier than ever
- Administrator functions allow you to lock out programming and editing permissions
- Free software upgrades as new features are made available

### Easy Installation & Expansion

- A removable process chamber allows easy installation into a glove box or hood
- Bluetooth® Wireless Connectivity makes adding new hardware simple, no additional cables required
- Add new options through our field upgradeable backpack



**Telephone:** 215-699-7278

**Fax:** 215-699-4311

**Email:** [sales@laurell.com](mailto:sales@laurell.com)

Laurell Technologies Corporation  
441 Industrial Drive  
North Wales, PA 19154-4150

(ES) Equipements Scientifiques SA - Département Bio-Tests & Industries - 127 rue de Buzenval BP 26 - 92380 Garches  
Tél. 01 47 95 99 90 - Fax. 01 47 01 16 22 - e-mail: [bio@es-france.com](mailto:bio@es-france.com) - Site Web: [www.es-france.com](http://www.es-france.com)