

EA-4000 Eye Analyzer

OPTICAL AND ELECTRICAL SAMPLING SCOPE



The fastest sampling scope in the industry. A powerful solution for the 5G production line.

KEY FEATURES

Ultra-fast 1M sample/s, measures 1000 waveforms in 2 seconds (2000 sample/waveform)

Optical receiver support singlemode and multimode

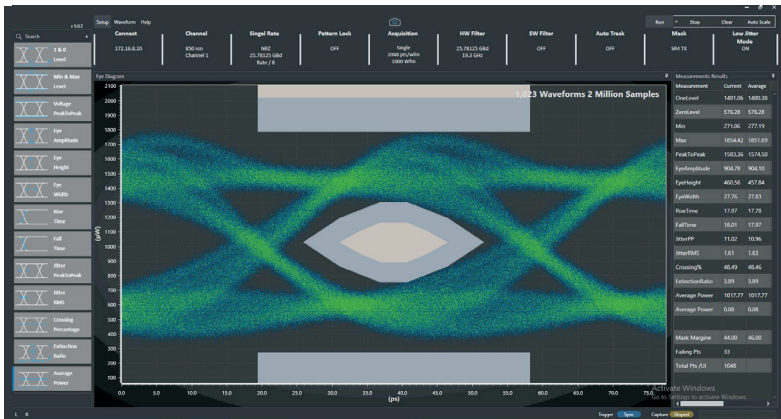
Repeatable measurements and comparable to tier-1 scope

Built-in low jitter mode (optional)

SPEC SHEET

EXFO

COMPELLING EYE SHARPENING FOR PRODUCTION TESTING



Intuitive GUI for NRZ eye diagrams

SPECIFICATIONS

Electrical

Sampling speed (sample/s)	1,000,000
Bandwidth (GHz)	33 (typical at 3 dB bandwidth)
Input range (V_{ppd})	1.0 (max.)
Damage amplitude (V_{ppd})	1.7 (max.)
Connector type	K(f) (50 Ω)
Return loss (dB)	-6.5 (at 32 GHz)
RMS noise (mV)	2.0 (typical) / 2.5 (max.)

Optical

Bandwidth (GHz)	33 (for 28G optical)
Wavelength (nm)	830-1600 (full range model of 28G) 1250-1600 (SMF model of 28G) 780-1600 (for 10G optical)
Return loss (dB)	-24 (full range model) -30 (SMF model)
Input sensitivity (dBm) (mask margin 0 %, hit ratio 0)	-8 (typical at 850 nm) -10 (typical at 1310 nm)
Maximum power (mW)	8
Connector type	FC/PC (50/125 μ m) (full range model) FC/PC (9/125 μ m) (SMF model)

Clock

Clock input ratio	/8, /16, /32, /64 (low jitter mode option)
Trigger jitter (fs)	<290 (typical)
Sensitivity (mV)	100 (typical)

ORDERING INFORMATION

EA-4000-XX-XX

Model ■

28-1-0-SM^a = 28G optical scope (830 nm - 1600 nm)28-2-0-SM^a = 2x28G optical scope (830 nm - 1600 nm)28-1-1-SM^a = 28G O/E scope, 1CH optical (830 nm - 1600 nm) and electrical (differential)28-1-0-S^b = 28G optical scope (SMF) (1250 nm - 1600 nm) singlemode28-2-0-S^b = 2x28G optical scope (SMF) (1250 nm - 1600 nm) singlemode28-1-1-S^b = 28G O/E scope, 1CH optical (1250 nm - 1600 nm) and 1CH differential electrical (SMF) singlemode33-0-1-E^c = 33 GHz digital electrical scope (differential). Best for electrical EYE33-0-2-E^c = 2CH 33 GHz digital electrical scope with K connector (differential). Best for electrical EYE

Options ■

10 = Add 10G optical hardware^d

- a. Multimode and singlemode supported
- b. Best for singlemode
- c. Best for electrical EYE
- d. Available for EA-4000-28-1-0-SM and EA-4000-28-1-0-S

Preliminary

EXFO headquarters T +1 418 683-0211 Toll-free +1 800 663-3936 (USA and Canada)

EXFO serves over 2000 customers in more than 100 countries. To find your local office contact details, please go to www.EXFO.com/contact.

EXFO is certified ISO 9001 and attests to the quality of these products. EXFO has made every effort to ensure that the information contained in this specification sheet is accurate. However, we accept no responsibility for any errors or omissions, and we reserve the right to modify design, characteristics and products at any time without obligation. Units of measurement in this document conform to SI standards and practices. In addition, all of EXFO's manufactured products are compliant with the European Union's WEEE directive. For more information, please visit www.EXFO.com/recycle. Contact EXFO for prices and availability or to obtain the phone number of your local EXFO distributor.

For the most recent version of this spec sheet, please go to www.EXFO.com/specs.

In case of discrepancy, the web version takes precedence over any printed literature.