

ADVANCED GRAIN MOISTURE METER

C-PRO – CONNECTS TO YOUR SMARTPHONE



KNOW YOUR MOISTURE CONTENT AND AVOID SPOILAGE

Effective grain storage is essential for ensuring high crop quality and preventing loss of product. Moisture Management is the key to safe storage. C-Pro is a next-generation moisture analyser where we combine the latest technology with our combined built-in grinder and compressor for grain and seeds. We feel safe to say that this is the world's most technically advanced handheld grain moisture meter.

The key functions/benefits are:

- Know the moisture content in your grain and seeds
- Accurate and consistent results
- Easy to use; four easy steps and you are good to go
- Gain vital insights and manage documentation

A complete overview is now yours – even on the go! C-Pro – the pocket-sized digital grain moisture meter that delivers consistent results

C-PRO – DIGITAL GRAIN MOISTURE METER

Keeps track of your measurement history



C-Pro is a new pocket-sized digital grain moisture analyser that delivers consistent results. The grain or seed is ground and compressed in a single operation, which ensures state-of-the-art measurement of the sample's water content.

With the new C-Pro we have developed a special app that allows you to obtain GPS location, timestamps, notes and images for each measurement and to keep track of your measurement history. It's truly handier and more convenient than ever before.

APP FEATURES

- Sync measurements from the device to the app
- Low-energy Bluetooth connection
- Track GPS location for each measurement
- Track time of measurements
- Add images and notes to measurements
- Connect to multiple devices

C-PRO IS SUPER-EASY TO USE AND HANDLE

C-Pro has an intuitive interface with four simple buttons and a colour display that makes it easy to navigate the menu and make measurements. With the app, you can always access your old measurements, even on busy days when you're on the go.



Turn on the device by pressing the power button and use the arrow keys to select crop type.



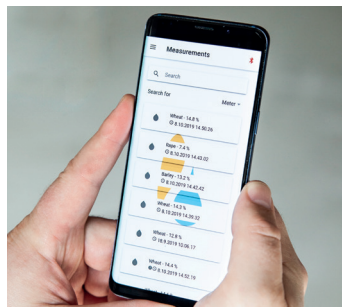
Pour the sample into the grinder and grind. The sample size is measured out in the built-in measuring cup.



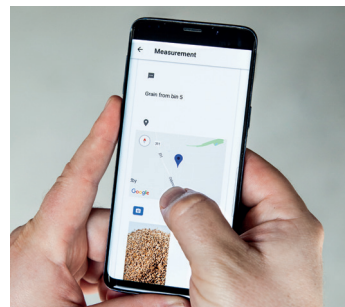
Press the test button and read the moisture content directly from the display.



Sync the C-Pro with the app "SA Moisture Connect", installed from your App Store or Play Store.



View the results in the app and compare with recent readings.



Use the app to add images and notes for documentation.

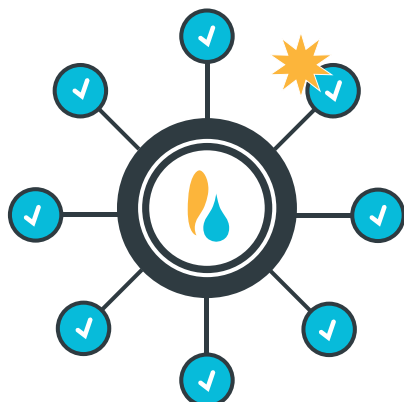
TECHNICAL SPECIFICATIONS

Measuring range (Moisture): 5 to 50% depending on crop type
Operating range (Temperature): 0 to 50 °C
Resolution: 0.1% moisture
Temperature compensation: Automatic
Weight including case: 2 kg
Dimension: 13x21x8 cm
Battery: 9 V Alkaline
Display: High resolution color display
Accuracy: Better than +/- 0.25% in normal moisture range by using average and calibration adjustments



The name of the C-Pro app is "SA Moisture Connect" and has been designed with user-friendliness at its core. Download the app from Google Play or the App Store. Connect with your device and you are ready to go.

If you need any help, please contact your local dealer or our technical helpdesk.



HIGHLIGHTS & FEATURES

- Digital readout with accuracy to one decimal point
- Combined grinding and compressing of sample
- Built-in measuring cups
- Automatic temperature compensation
- Grinder made of hardened galvanised steel
- Casing in shockproof ABS plastic
- Automatic calculation of average value
- Individual calibration for all grain types
- Can be updated with new moisture scales
- Delivered in an impact-resistant carrying case
- App included
- Two-year guarantee

I SUPERTech AGROLINE OUR STORY

Our story is one of commitment, innovation and more than 25 years of hands-on experience with a comprehensive and advanced product range for the post-harvest equipment industry. We are a proud Danish company with committed and motivated employees, and see our partners as a key asset. Our willingness to adapt to future changes gives us the ability to work with state-of-the-art processes and equipment. In everything we do, we are driven by our focus on our customers' needs.

At Supertech Agroline, our vision is straightforward. We are committed to offering first-mover technology applied for high-quality post-harvest monitoring and measurement equipment that customers can rely upon. We are here to support you – all the way.

- Family-owned business founded by Lars Frederiksen
- In-house Danish production
- Worldwide distribution and sales in more than 50 countries
- Strong relations, support and aftersales service all over the world

We secure your crops and values by minimising loss of grain while maximising profits at the same time. All of our products – and especially our new AgroLog product line – are designed to assist you safely into the future. Please also visit our new website www.agrolog.io



Supertech Agroline

Supertech Agroline ApS

Phone: +45 6481 2000

ES France - Département Bio-Tests & Industries - 127 rue de Buzenval BP 26 - 92380 Garches
Tél. 01 47 95 99 90 - Fax. 01 47 01 16 22 - e-mail: bio@es-france.com - Site Web: www.es-france.com