

TOUCH TYPE - TWS-153/300/600S SOLID AND LIQUID DENSITY TESTER



Suitable for:

Solid: Laboratory of solder, silver, nickel, zinc, plastic, rubber, wire and cable, glass, film, hard alloy, new materials and other recycling industries.

Liquid: Acid Solution, Alkaline Solution, Saline Solution, Anti-oxidant Solution.

Principle:

Solid: Referring to the standards of **ASTM D297, D792, JIS K6530, ISO2781, 1183** and by applying the buoyancy of the object immersed in the liquid and hydrostatics principle, the density, volume, mixture ratio of dense solid materials can be showed.

Liquid: According to the standard test method of **GB/T13531, T5526, T5009, ASTM, JIS** and ISO standards, and by adopting the buoyancy method of Archimedean principle, the density and concentration can be showed rapidly.

Function:

Solid has three modes:

1. Density measuring mode DS - measuring density and volume.
2. Mix ratio density measuring mode Mix1- it can get the proportion of the main material.
3. Mix ratio density measuring mode Mix2- it can get the proportion of the second material.

Liquid has two sets of weights to set LID1 and LID2:

1. LID 1 - Liquid density measuring mode – use the weight set in the first group - measuring density and concentration of liquid.
2. LID 2 - Liquid density measuring mode – use the weight set in the second group - measuring density and concentration of liquid.

Style:



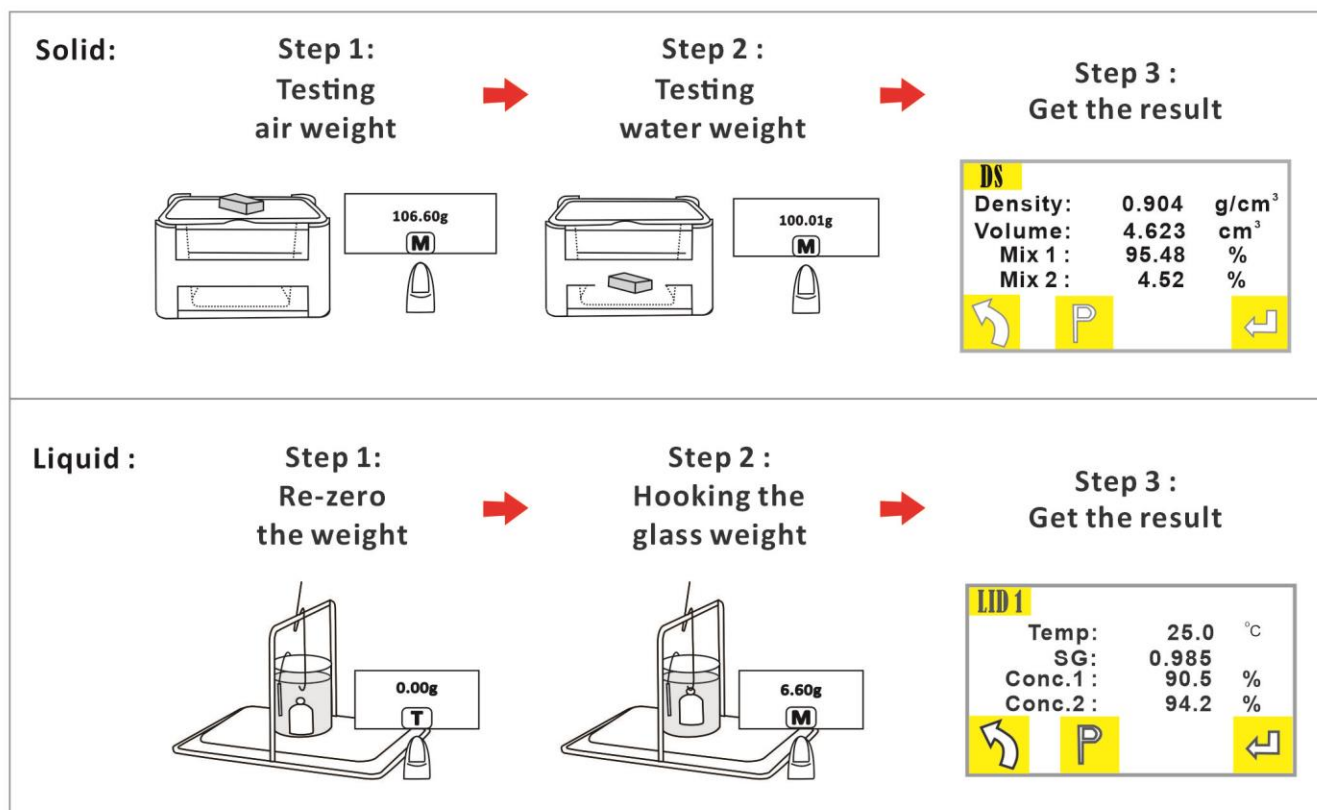
TWS-153S - Solid type and liquid type

TWS-300S - Solid type and liquid type

Specification:

| Model | | TWS-153S | TWS-300S | TWS-600S |
|--------------------|-------------------|-------------------------|------------------------|----------|
| Max weight | | 150g | 300g | 600g |
| Weighing Precision | | 0.001g | 0.01g | |
| Solid Mode | Density Precision | 0.0001g/cm ³ | 0.001g/cm ³ | |
| | Mix Ratio | 0.01~100.00% | | |
| Liquid Mode | Relative Density | 0.0001g/cc | 0.001g/cc | |
| | Concentration | 0.1~100.0% | | |

Testing step:



Optional Accessoris :



A: Glass Weight
(general acid, alkaline liquid)



B. Stainless Steel Weight
(High viscosity liquid)



C. Teflon Weight
(Acid & alkali resistant liquid)

Features:

Solid mode:

1. With the function of mixing ratio, measure the ratio of the main materials in the two mixed materials.
2. With Infrared temperature sensors can automatically detect water temperature and automatically compensate for water temperature.
3. With upper and lower limit functions, you can determine whether the specific gravity of the test object is qualified or not. This machine is equipped with a buzzer device.
4. The large tank design is adopted to reduce the error caused by the buoyancy of the hanging rail. The size of the water tank is 148 × 100 × 85mm.

Liquid mode:

1. Can measure the specific gravity of general liquid, high viscosity, suspension or emulsion and colloidal dispersion.
2. Just 50cc, the machine can show the liquid density rapidly. Any weight can be as the standard value, easy to operate.
3. With two groups of concentration function. the density solution can be converted into a concentration value.