

Grain Polisher Pearlest

Kett

SCIENCE OF SENSING



Grain Polisher Pearlest

The Pearlest is renewed.

The Pearlest is a compact grain polisher suitable for inspecting condition and mixing degree of cracked, colored, nonglutinous, or glutinous rice. The sampled brown rice for inspection will be polished in a short time as 30 seconds. Since the rubber plate is used, capability of bran removal is excellent, and the grains are well finished. For polishing the brewers' rice, conventionally polishing a large amount is required using a special polisher. However, it is possible to polish a small amount, if the Pearlest is used.

Also, if the parts for barley polishing are used, the barley's fullness or yield ratio per kind can be inspected.

New Pearlest will provide you the enhanced functions and more safety.

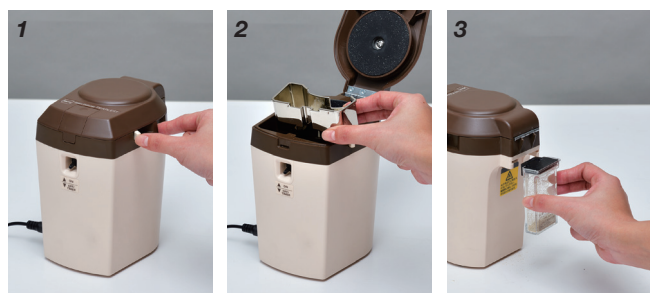
• User-friendly, easy operation

The polished grains can be ejected into the sample tray only by opening the motor-linked eject shutter. (1, 2)

The removed bran will be collected in the bran case at the back of the unit.

The bran case is transparent, and the timing for discarding the removed bran can be seen at a glance (3).

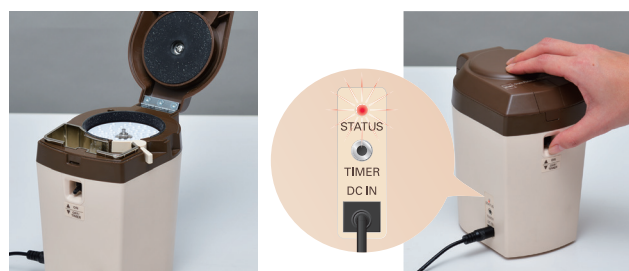
It will prevent an error caused by excessive accumulation of removed bran.



• Safety design

The sample scatter-proof function and motor overload prevention function will avoid accident during operation.

The status lamp will notify the motor error by blinking. It can provide you the sense of safety.



The motor will not rotate when the cover is opened.








The status lamp lights up in the normal state, and blinks when a motor error occurred.

■ Specifications

Sample weight	Brown rice: approximately 10 g Barley: approximately 10 g
Time for polishing	Brown rice: 30 to 40 seconds Barley: 180 to 240 seconds The time is only a guideline. It is sample/moisture dependent.
Power supply	100 V AC to 240 V AC (50/60 Hz)
Dim. and weight	95 (W) x 130 (D) x 160 (H) mm, 2.0 kg
Accessories	Pallet, brush, paint brush, spoon, AC adapter, accessory case
Options	Pearlest Timer TZ-910, parts for polishing barley

■ Use cases

(The percentage represents the weight conversion ratio compared with the one before polishing.)

Nonglutinous brown rice			
	Before polishing	40 sec./90%	
Brewers' rice (Yamada Nishiki)			
	Before polishing	5 min./70%	20 min./50%
Two rowed barley			
	Before polishing	4 min./55%	

The above is only an example. It is sample/moisture dependent.

• Long-hour operation is possible

The newly adopted DC motor can provide little heat generation and long-hour operation.

• Polishing a small amount of brewers' rice

Polishing a small amount of brewers' rice, conventionally which was difficult, is now available.

• Efficiency increased with use of timer

Using the optional Pearlest Timer TZ-910, polishing can be stopped automatically after a certain time. It is useful when polishing the multiple samples in a same degree, or long-hour polishing is required.



Requests