

AW200SG, Anaerobic Workstation

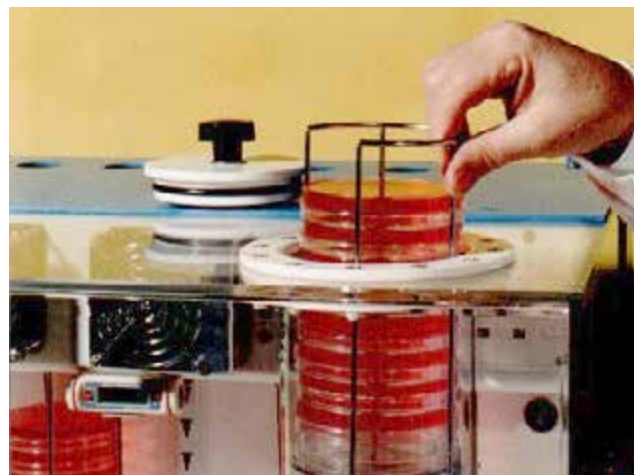


The AW200SG is the smallest of MUNRO's range of anaerobic workstations. It is ideal for the laboratory where oxygen free conditions are required for the growth and identification of bacteria. Its small bench size makes the AW200SG ideal for the individual research project.

The unit will incubate 220 petri dishes and has a 10 dish transfer port. The workstation operates from a single cylinder of anaerobic mixed gas and is very economical on gas usage.

The product comes complete with automatic humidity control, oxygen indicator equipment, internal mains socket, spotlight, catalyst, plate holders and gauntlets. It is ready to work once it is plugged into its electricity and gas supplies.

Plate Access: The transfer port is situated on top of the workstation and will hold 10 petri dishes. This will allow rapid transfer of dishes both into and out of the incubator. The positive pressure inside the cabinet and the doors at each end of the lock, together with the fast acting gas inlet switching, ensures that the workstation remains anaerobic at all times.



Glove Free Operation: This unique bare hand method is very simple to operate. Air-tight seals fit around the user's wrists as shown and the anaerobic atmosphere is maintained. The design eliminates the use of footswitches and gets rid of large internal arm port bungs, giving more working room inside the incubator. The system is very economic on gas usage and the hands can be inserted in seconds.

Electrotek Brand of Quality



Controls: The unit works automatically without the use of footswitches or pushbuttons and the controls are not needed for routine operation.

Admitting Equipment: Equipment can be placed inside the incubator through the arm ports prior to commissioning.

Anaerobic Indication: A small pump together with an oxygen-sensitive liquid indicator is provided with the workstation.

Bench Area: The workstation occupies a minimum amount of bench area and is completely self contained.

Visibility: The visibility is excellent. Four of the cabinet's surfaces are transparent and this is further enhanced by a narrow angle, low voltage spotlight. There are no folds in the front viewing window to obstruct clear vision.

Working Position: Working inside the incubator is very comfortable and all parts can be reached without effort.

Construction: The unit is made using high quality acrylic and the seams are welded to ensure leak-free joints.

Temperature: The temperature is controlled by an adjustable electronic controller and an internal digital thermometer displays the temperature.

Humidity: The R.H. within the incubator is controlled by a humidistat and fan cooled condensation plate situated at the rear. The distillate is collected in a drainable bottle.

Internal Power Socket: A mains socket is provided to facilitate the use of electrical equipment inside the chamber.

Earth Leakage Circuit Breaker: The workstation is fitted with a safety device to protect the operator against electric shock.

The AW200SG can also be used as a microaerophilic incubator by using an alternate gas supply.

Specifications	
Incubation Capacity	220 Petri Dishes
Transfer Port Capacity	10 Petri Dishes
Gas Supply	Mixed Gas 10% H ₂ + 10% CO ₂ + 80% N ₂
Electrical Supply	240V.A.C., 50Hz, 300W
Temperature Range	Ambient + 4°C to 42°C
Temperature Stability	±0.5°C @ 37°C
Overall Dimensions	W=25.5" (648mm), D=25" (635mm), H=22.5" (572mm)

Complies with ESCHLE and other international standards.

You will find the AW200SG effective, comfortable to work with and safe. It is economical to run, maintain and service..

Electrotek Brand of Quality

