

## FLOOD DEFENCE

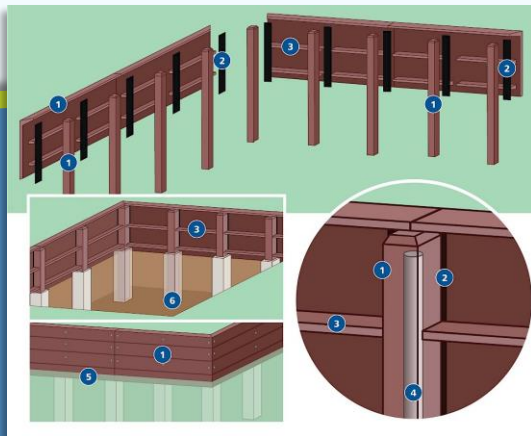
# FloodWall

**FloodWall is a modular, low-cost, perimeter flood defence system designed to give long-term peace of mind to homes and businesses at threat from local flood incidents.**

Robust, cost-effective and easy to install. Panels and posts are constructed from 100% non-porous, post-industrial plastic waste, with steel-pipe reinforced posts for added strength and a robust installation.

**Andel FloodWall is the cost-effective, environmentally friendly alternative for perimeter flood defence.**

- Cost-effective compared to traditional flood defence systems.
- A modular system designed for easy transportation and speedy on-site assembly.
- Suitable for both new build and retrofit installations, both residential and commercial.
- Panels and posts are constructed from nonporous, durable, 100% post-industrial recycled plastic waste.
- Environmentally friendly, reducing your carbon footprint compared to an all-concrete construction.
- Aesthetically sympathetic with a wood-effect finish.
- Steel reinforced posts for a robust installation.



FLOOD DEFENCE

# FloodWall



We use a personalised approach to each project to ensure the most effective outcome. The height of the flood defence is calculated based on a flood risk assessment. Panels are available in two sizes: 60cm high x 192cm wide or 80cm high x 192cm wide.

If the defences need to exceed the maximum standard panel height, panels can be doubled up to give extra height. The added panels are sealed with a watertight gasket and additional supports are added to ensure the defence meets the correct requirements.