

# Ser[LOG] Data Logger



## KEY APPLICATIONS:

- Environmental and agricultural networks
- Meteorology
- Universities
- National Governments
- Industry
- Health resorts
- Aviation

## The scalable communications platform for professional meteorological data collection and processing

Accurate data acquisition is a critical component of any weather monitoring solution. With AEM's Ser[LOG] data loggers, you get precise and reliable readings under any condition. The flexible Ser[LOG] data loggers offer a wide range of customizable configurations and state-of-the-art communication interfaces for all your measurement tasks and requirements. Existing sensors, including those from other manufacturers, can be easily added and used with the included sensor library. The Ser[LOG] data loggers are ideal for setting up even large weather measurement networks.

## BENEFITS



Large sensor library, freely configurable and scalable



User-friendly with free access to all connections and controls



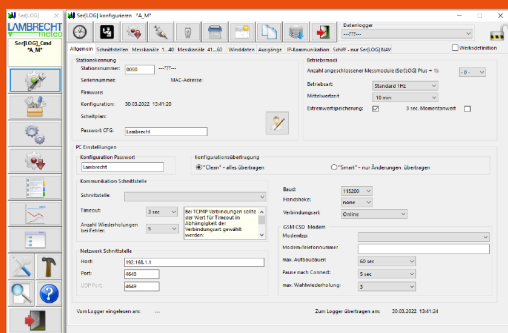
Highly versatile with many configuration options



Interference resistant through shielded aluminum housing

## SER[LOG] COMMANDER APP

The Commander app gives you maximum freedom to easily configure your Ser[Log] data logger and customize your measurement tasks.



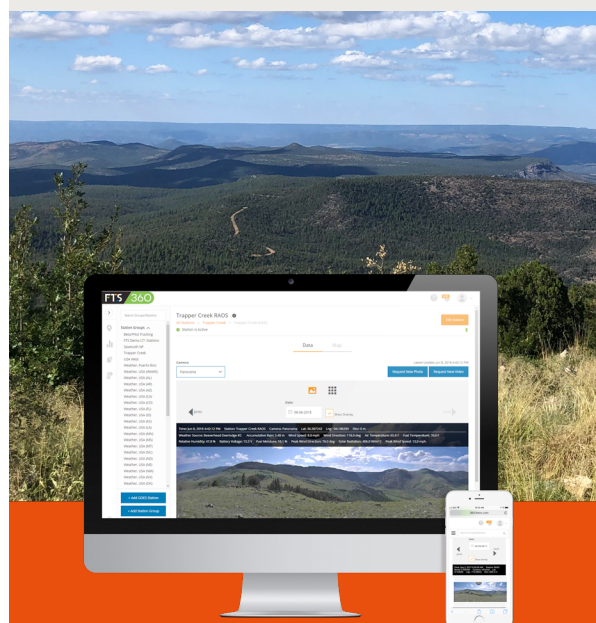
## Detailed specifications

The Ser[LOG] collects your weather data (wind, precipitation, air temperature, relative humidity, air pressure and radiation) in a single place and provides real-time visualization.

ID 00.95770.000000	SER[LOG] DATA LOGGER
Resolution	16-bit ADC with up to 1024 times oversampling; processing in 8-byte IEEE real format
Signal input	COM5 also as SDI12; 2 status inputs
Output	2 potential-free, configurable relays; expandable up to 10 relays with a maximum of 8 Modbus relays
Interface	5 x RS 485; 6 x RS 422; 4 x RS 232; USB Device; USB Host; Ethernet
Operating conditions	-30...+70 °C; 5...95 % r. h. (non condensing)
Supply voltage	10...30 VDC
Current consumption	From 34 mA (12 V) up to 200 mA (12 V) - configuration-dependent
Storage capacity	1 year in ring memory (8-Byte IEEE real format) configuration-independent
Ethernet	100 MBit; connector RJ45
Dimensions/Weight	135 x 135 x 72 mm / approx. 0.9 kg
EMC standards/ Electrical safety	IEC 60945; RS422 and RS485 up to 2.5 kV isolated; all interfaces with 15 kV ESD protection
Included in delivery	USB cable, Ser[LOG] Commander management app

## Key features:

- Collect and process up to 60 measured values with Modbus RTU
- Up to 32 Modbus TCP connections with sensors from other manufacturers
- Alarm system for 10 warning channels using built-in and external relays (e-mail, SMS)



FTS360 is a secure and reliable cloud based IoT platform that allow users to view and curate sensor and station data, camera images and video. It provides a customizable, agile programming environment for advanced calculations, intelligent alerting, and full configuration capabilities.