



DC to 3GHz Coaxial Switch

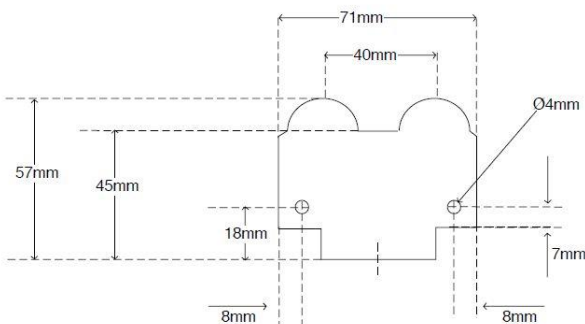


CST-BAB-SW-1006 is Broad Band DC – 3000MHz coaxial switch offering a high power handling and low insertion loss across the band.

This unit is available in 50 Ohm N-type connectors

Summary table for RF performance over L-band operation, DC to 3000 MHz

Model Numbers	RF ports	Return Loss				Isolation (dB)		Insertion Loss (dB)	
		DC-1GHz		1-3GHz		DC-0.5GHz	0.5-3GHz	DC-1GHz	1-3GHz
		Typ	Min	Typ	Min				
CST-BAB-SW-1006	N-type	28	20	18	12	60	45	0.2	0.5



Mechanical Dimensions

Maximum acceptable operating parameters for reliable and safe operation

Parameter	Value	Comment
Max Power Rating	1.5Kw	
Operating temperature	-20 to 85°C	
Storage Temperature	-40°C to +85°C	
Humidity	80%	Non Condensing
Altitude	10,000 feet	Above mean Sea Level

! Operation beyond these limits may cause instantaneous and permanent damage.

