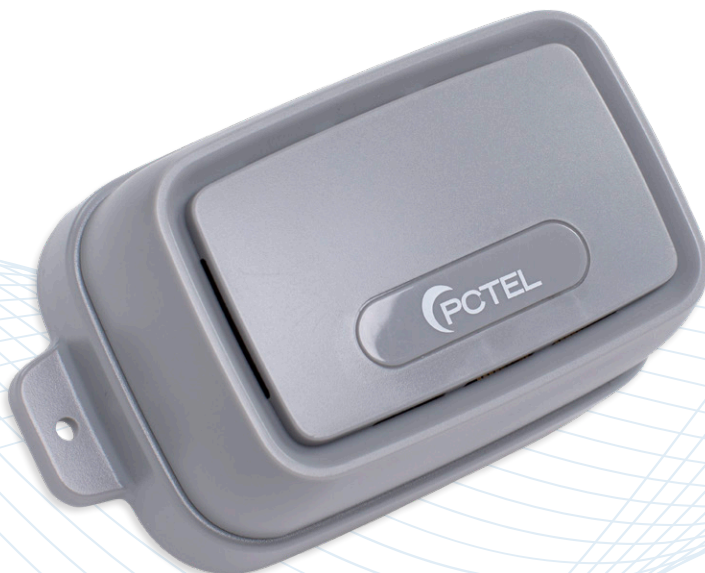


# Wireless Sensor Endpoint

Sensor Connectivity Solution

WSE-1240



## Connectivity

- LoRa
- Bluetooth® 5
- NFC
- 802.15.4

## Features

- Cortex M4F 32-bit application processor with 1MB flash memory / 256K RAM
- 4MB external flash memory
- LED indicator
- Lithium-Ion Polymer battery pack

## Sensors

- Relative Humidity and Temperature
- 9-axis Inertial Measurement Unit
- Microphone





## Wireless Sensor Endpoint

### Sensor Connectivity Solution

The PCTEL® Wireless Sensor Endpoint (WSE) family are versatile Industrial IoT products that offer multiple radio connectivity options including LoRa, Bluetooth® 5, NFC as well as 802.15.4 support.

In addition to several radios, the PCTEL WSE family includes several sensors to monitor a variety of physical conditions. These sensors can detect temperature, relative humidity, acceleration, angular rate of change, magnetic field, and sound.

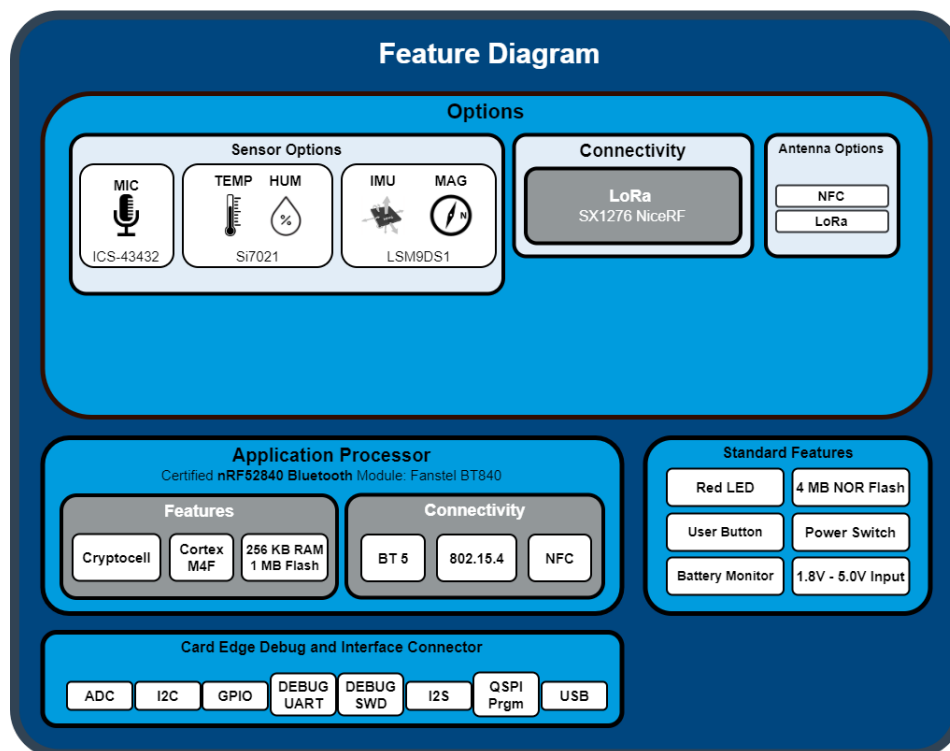
The PCTEL WSE is powered by a high capacity Lithium-Ion Polymer battery pack. The enclosure also has two mounting tabs for easy installation.

# Wireless Sensor Endpoint

## Sensor Connectivity Solution

### Features and Benefits

Feature	Benefit
ARM Mbed Enabled	Faster time to market leveraging ARM Mbed OS to accelerate application software development.
Internal Radio Antennas	No external connections with each radio having an individual antenna.
Rechargeable Battery Pack	Easily recharge the battery via USB Micro-B connector.
Mounting Tabs	Enclosure with two integrated tabs for easy installation.
Integrated Debug Interface	Ease of software development using the Wireless Sensor Development System.
Power Switch	WSE can be turned on and off as needed.
Push Button	User defined operation.



# Wireless Sensor Endpoint

## Sensor Connectivity Solution

### General Specifications

Parameter	Specification
Operating Temperature	-20°C to +60°C
Charging Temperature	0°C to +45°C
Storage Temperature	-20°C to +45°C (1-month) -20°C to +35°C (6-months)
Battery Pack	Li-Ion Polymer, 3.7V @ 4400mAh
Dimensions	60mm x 103mm x 43mm

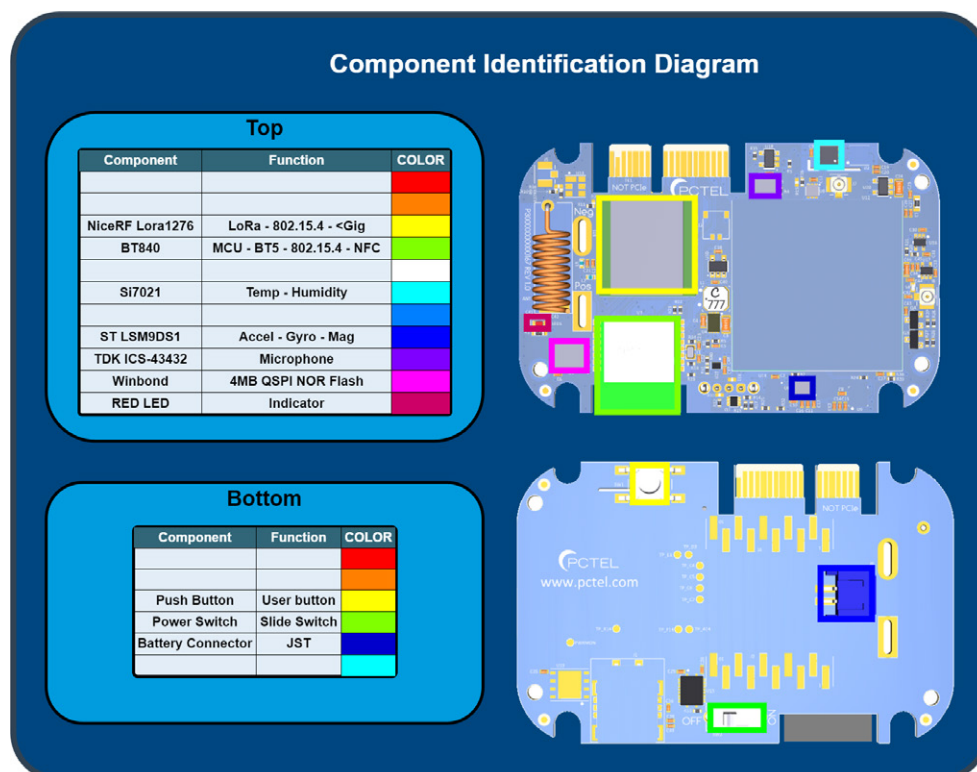
### Sensor Specifications

Device	Specification
Relative Humidity / Temperature	±3% RH (max) 0-80% RH / ±0.4°C (max) -10°C to +85°C
9-Axis Inertial Measurement Unit	3-axis Accelerometer: ±2/±4/±8/±16 g (linear) 3-axis Angular rate: ±245/±500/±2000 dps 3-axis Magnetic position: ±4/±8/±12/±16 gauss
Microphone	Frequency response: 50 Hz to 20 kHz SNR: 65 dBA, Sensitivity -26 dB FS



# Wireless Sensor Endpoint

## Sensor Connectivity Solution



## CONTACT US

For more information about  
this product contact your  
sales representative or visit  
> [pctel.com/industrial-iot-devices](http://pctel.com/industrial-iot-devices)

### Solving Complex Wireless Challenges

PCTEL is a leading global provider of wireless technology solutions, including purpose-built Industrial IoT devices, antenna systems, and test and measurement products. Trusted by our customers for over 25 years, we solve complex wireless challenges to help organizations stay connected, transform, and grow.

### Product Usage

THE PRODUCTS ARE NOT DESIGNED, MANUFACTURED, OR INTENDED FOR USE, ALONE OR WITH OTHER PRODUCTS, IN ANY APPLICATION REQUIRING FAIL-SAFE PERFORMANCE OF THE PRODUCTS AND/OR IN WHICH A MALFUNCTION OR A FAILURE OF THE PRODUCTS COULD LEAD TO DEATH, PERSONAL INJURY, OR SERIOUS PHYSICAL OR ENVIRONMENTAL DAMAGE, INCLUDING BUT NOT LIMITED TO (A) SURGICALLY IMPLANTED DEVICES, LIFE SUPPORT MACHINES, LIFE PRESERVING MEDICAL DEVICES OR SYSTEMS, OTHER MEDICAL AND SURGICAL APPLICATIONS, OR ANY DEVICES, MACHINES, SYSTEMS, PRODUCTS, OR PROCESSES REQUIRING APPROVAL, TESTING OR CERTIFICATION BY THE U.S. FOOD AND DRUG ADMINISTRATION OR A SIMILAR GOVERNMENTAL ENTITY; (B) AIR TRAFFIC CONTROL OR AIRCRAFT SYSTEMS; (C) CONTROL EQUIPMENT FOR NUCLEAR OR OTHER POWER GENERATION FACILITIES; OR (D) MISSILE, NUCLEAR, BIOLOGICAL, OR CHEMICAL WEAPONS, OR OTHER MILITARY APPLICATIONS (EACH A **"PROHIBITED USE"**).

ANY AND ALL PROHIBITED USE OF THE PRODUCTS IS STRICTLY PROHIBITED, AS IS ANY SALE OR RESALE OF THE PRODUCTS FOR A PROHIBITED USE. PCTEL SHALL HAVE NO LIABILITY FOR ANY USE OF THE PRODUCTS IN ANY MANNER FOR, OR IN CONNECTION WITH, A PROHIBITED USE. ANY SUCH USE SHALL VOID ANY WARRANTIES AND INDEMNITIES PROVIDED BY PCTEL, AS WELL AS ALL OTHER OBLIGATIONS OF PCTEL, INCLUDING, WITHOUT LIMITATION, WITH RESPECT TO SUPPORT. PCTEL SHALL NOT BE DEEMED TO HAVE CONSENTED TO OR APPROVED ANY PROHIBITED USE BY PROVIDING WARRANTY, SUPPORT, OR ANY OTHER SERVICE. ANY PARTY USING THE PRODUCTS IN A PROHIBITED USE SHALL INDEMNIFY AND HOLD HARMLESS PCTEL FROM ANY CLAIMS, LIABILITIES, AND EXPENSES ARISING IN CONNECTION WITH SUCH PROHIBITED USE.



PCTEL, Inc.

T: +1 630 372 6800 | [pctel.com](http://pctel.com)



ES France - Département RF & Hyperfréquences  
127 rue de Buzenval BP 26 - 92380 Garches



Tél. 01 47 95 99 60  
Fax. 01 47 01 16 22

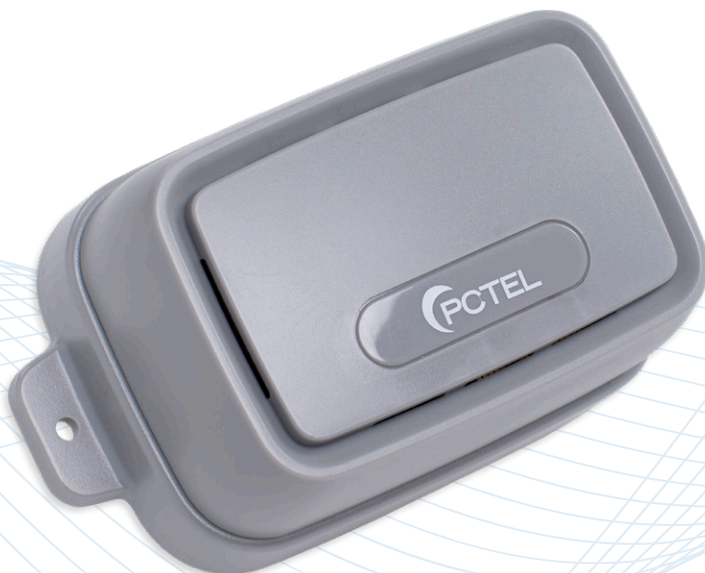


e-mail : [hyper@es-france.com](mailto:hyper@es-france.com)  
Site Web : [www.es-france.com](http://www.es-france.com)

# Wireless Sensor Endpoint

Sensor Connectivity Solution

WSE-1230



## Connectivity

- LoRa
- Bluetooth® 5
- NFC
- 802.15.4

## Features

- Cortex M4F 32-bit application processor with 1MB flash memory / 256K RAM
- 4MB external flash memory
- LED indicator
- Lithium-Ion Polymer battery pack

## Sensors

- 9-axis Inertial Measurement Unit
- Gas, Air Quality, Pressure, Temperature and Humidity
- Microphone





## Wireless Sensor Endpoint

### Sensor Connectivity Solution

The PCTEL® Wireless Sensor Endpoint (WSE) family are versatile Industrial IoT products that offer multiple radio connectivity options including LoRa, Bluetooth® 5, NFC as well as 802.15.4 support.

In addition to several radios, the PCTEL WSE family includes several sensors to monitor a variety of physical conditions. These sensors can detect air quality, acceleration, angular rate of change, magnetic field, and sound.

The PCTEL WSE is powered by a high capacity Lithium-Ion Polymer battery pack. The enclosure also has two mounting tabs for easy installation.



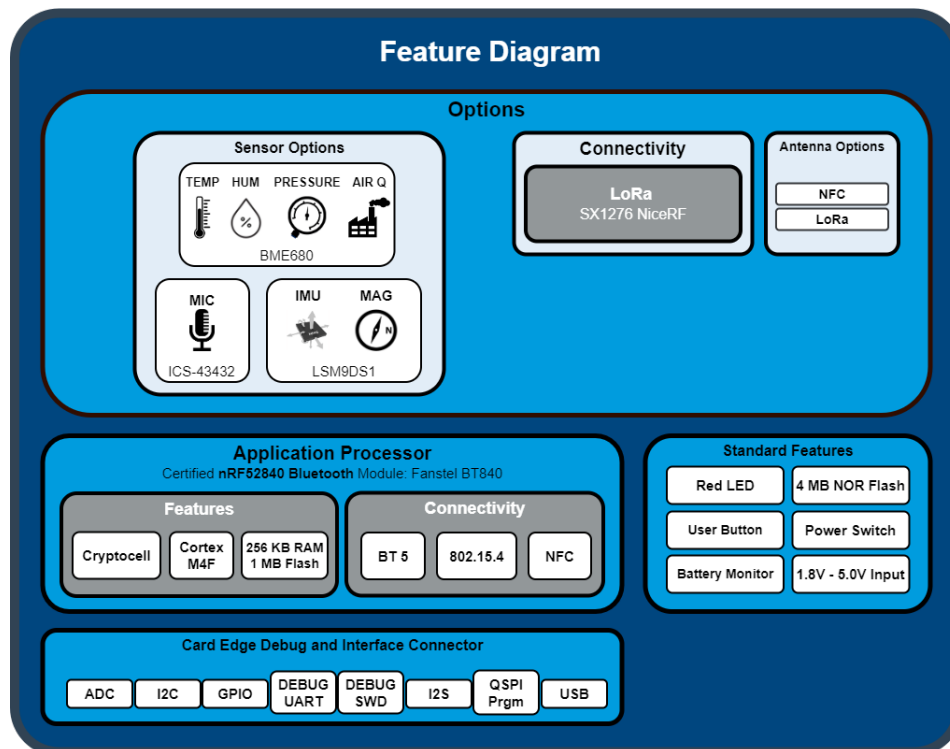


# Wireless Sensor Endpoint

## Sensor Connectivity Solution

### Features and Benefits

Feature	Benefit
ARM Mbed Enabled	Faster time to market leveraging ARM Mbed OS to accelerate application software development.
Internal Radio Antennas	No external connections with each radio having an individual antenna.
Rechargeable Battery Pack	Easily recharge the battery via USB Micro-B connector.
Mounting Tabs	Enclosure with two integrated tabs for easy installation.
Integrated Debug Interface	Ease of software development using the Wireless Sensor Development System.
Power Switch	WSE can be turned on and off as needed.
Push Button	User defined operation.



# Wireless Sensor Endpoint

## Sensor Connectivity Solution

### General Specifications

Parameter	Specification
Operating Temperature	-20°C to +60°C
Charging Temperature	0°C to +45°C
Storage Temperature	-20°C to +45°C (1-month) -20°C to +35°C (6-months)
Battery Pack	Li-Ion Polymer, 3.7V @ 4400mAh
Dimensions	60mm x 103mm x 43mm

### Sensor Specifications

Device	Specification
9-Axis Inertial Measurement Unit	3-axis Accelerometer: $\pm 2/\pm 4/\pm 8/\pm 16$ g (linear) 3-axis Angular rate: $\pm 245/\pm 500/\pm 2000$ dps 3-axis Magnetic position: $\pm 4/\pm 8/\pm 12/\pm 16$ gauss
Microphone	Frequency response: 50 Hz to 20 kHz SNR: 65 dBA, Sensitivity -26 dB FS
Environmental Gas / Air Quality	Gas (VOC): 20% tolerance; 5% accuracy
	Pressure: 300 to 1100 hPa ( $\pm 0.6$ hPa)
	Humidity: 10% to 90% RH ( $\pm 3\%$ ) at 0°C to +65°C
	Temperature: -40°C to +85°C ( $\pm 1^\circ\text{C}$ ), 25°C ( $\pm 0.5^\circ\text{C}$ )
	Air Quality Score: 0 to 500 ( $\pm 15\%$ )



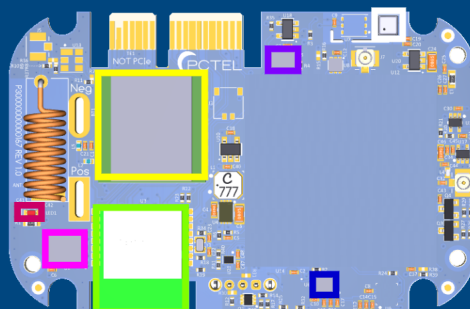
# Wireless Sensor Endpoint

## Sensor Connectivity Solution

### Component Identification Diagram

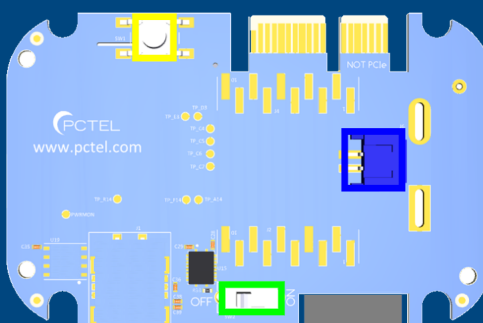
#### Top

Component	Function	COLOR
NiceRF Lora1276	LoRa - 802.15.4 - <Gig	Red
BT840	MCU - BT5 - 802.15.4 - NFC	Yellow
BOSCH BME680	Temp - Hum - Pres - Air Q	Green
ST LSM9DS1	Accel - Gyro - Mag	Cyan
TDK ICS-43432	Microphone	Blue
Winbond	4MB QSPI NOR Flash	Purple
RED LED	Indicator	Pink



#### Bottom

Component	Function	COLOR
Push Button	User button	Red
Power Switch	Slide Switch	Yellow
Battery Connector	JST	Green



## CONTACT US

For more information about  
this product contact your  
sales representative or visit  
> [pctel.com/industrial-iot-devices](http://pctel.com/industrial-iot-devices)

### Solving Complex Wireless Challenges

PCTEL is a leading global provider of wireless technology solutions, including purpose-built Industrial IoT devices, antenna systems, and test and measurement products. Trusted by our customers for over 25 years, we solve complex wireless challenges to help organizations stay connected, transform, and grow.

### Product Usage

THE PRODUCTS ARE NOT DESIGNED, MANUFACTURED, OR INTENDED FOR USE, ALONE OR WITH OTHER PRODUCTS, IN ANY APPLICATION REQUIRING FAIL-SAFE PERFORMANCE OF THE PRODUCTS AND/OR IN WHICH A MALFUNCTION OR A FAILURE OF THE PRODUCTS COULD LEAD TO DEATH, PERSONAL INJURY, OR SERIOUS PHYSICAL OR ENVIRONMENTAL DAMAGE, INCLUDING BUT NOT LIMITED TO (A) SURGICALLY IMPLANTED DEVICES, LIFE SUPPORT MACHINES, LIFE PRESERVING MEDICAL DEVICES OR SYSTEMS, OTHER MEDICAL AND SURGICAL APPLICATIONS, OR ANY DEVICES, MACHINES, SYSTEMS, PRODUCTS, OR PROCESSES REQUIRING APPROVAL, TESTING OR CERTIFICATION BY THE U.S. FOOD AND DRUG ADMINISTRATION OR A SIMILAR GOVERNMENTAL ENTITY; (B) AIR TRAFFIC CONTROL OR AIRCRAFT SYSTEMS; (C) CONTROL EQUIPMENT FOR NUCLEAR OR OTHER POWER GENERATION FACILITIES; OR (D) MISSILE, NUCLEAR, BIOLOGICAL, OR CHEMICAL WEAPONS, OR OTHER MILITARY APPLICATIONS (EACH A **"PROHIBITED USE"**).

ANY AND ALL PROHIBITED USE OF THE PRODUCTS IS STRICTLY PROHIBITED, AS IS ANY SALE OR RESALE OF THE PRODUCTS FOR A PROHIBITED USE. PCTEL SHALL HAVE NO LIABILITY FOR ANY USE OF THE PRODUCTS IN ANY MANNER FOR, OR IN CONNECTION WITH, A PROHIBITED USE. ANY SUCH USE SHALL VOID ANY WARRANTIES AND INDEMNITIES PROVIDED BY PCTEL, AS WELL AS ALL OTHER OBLIGATIONS OF PCTEL, INCLUDING, WITHOUT LIMITATION, WITH RESPECT TO SUPPORT. PCTEL SHALL NOT BE DEEMED TO HAVE CONSENTED TO OR APPROVED ANY PROHIBITED USE BY PROVIDING WARRANTY, SUPPORT, OR ANY OTHER SERVICE. ANY PARTY USING THE PRODUCTS IN A PROHIBITED USE SHALL INDEMNIFY AND HOLD HARMLESS PCTEL FROM ANY CLAIMS, LIABILITIES, AND EXPENSES ARISING IN CONNECTION WITH SUCH PROHIBITED USE.



PCTEL, Inc.

T: +1 630 372 6800 | [pctel.com](http://pctel.com)



ES France - Département RF & Hyperfréquences  
127 rue de Buzenval BP 26 - 92380 Garches



Tél. 01 47 95 99 60  
Fax. 01 47 01 16 22

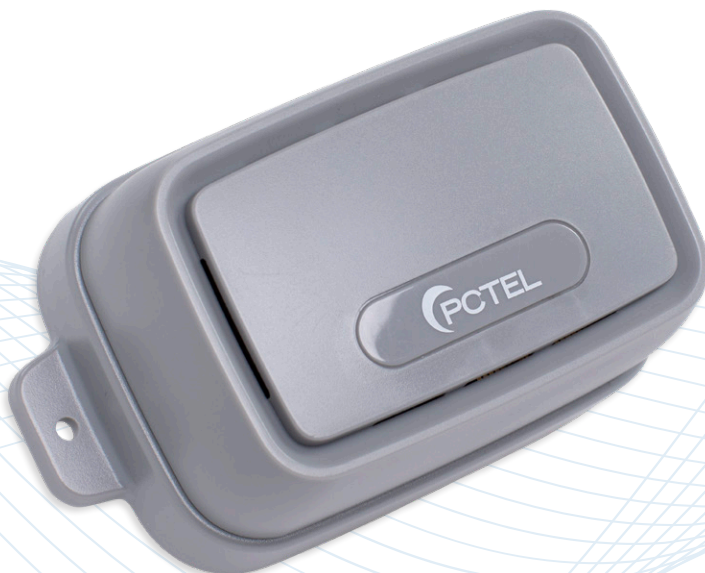


e-mail : [hyper@es-france.com](mailto:hyper@es-france.com)  
Site Web : [www.es-france.com](http://www.es-france.com)

# Wireless Sensor Endpoint

Sensor Connectivity Solution

WSE-1220



## Connectivity

- LoRa
- Bluetooth® 5
- NFC
- 802.15.4

## Features

- Cortex M4F 32-bit application processor with 1MB flash memory / 256K RAM
- 4MB external flash memory
- LED indicator
- Lithium-Ion Polymer battery pack

## Sensors

- Relative Humidity and Temperature
- 6-axis Inertial Measurement Unit
- Microphone





## Wireless Sensor Endpoint

### Sensor Connectivity Solution

The PCTEL® Wireless Sensor Endpoint (WSE) family are versatile Industrial IoT products that offer multiple radio connectivity options including LoRa, Bluetooth® 5, NFC as well as 802.15.4 support.

In addition to several radios, the PCTEL WSE family includes several sensors to monitor a variety of physical conditions. These sensors can detect acceleration, angular rate of change, and sound.

The PCTEL WSE is powered by a high capacity Lithium-Ion Polymer battery pack. The enclosure also has two mounting tabs for easy installation.

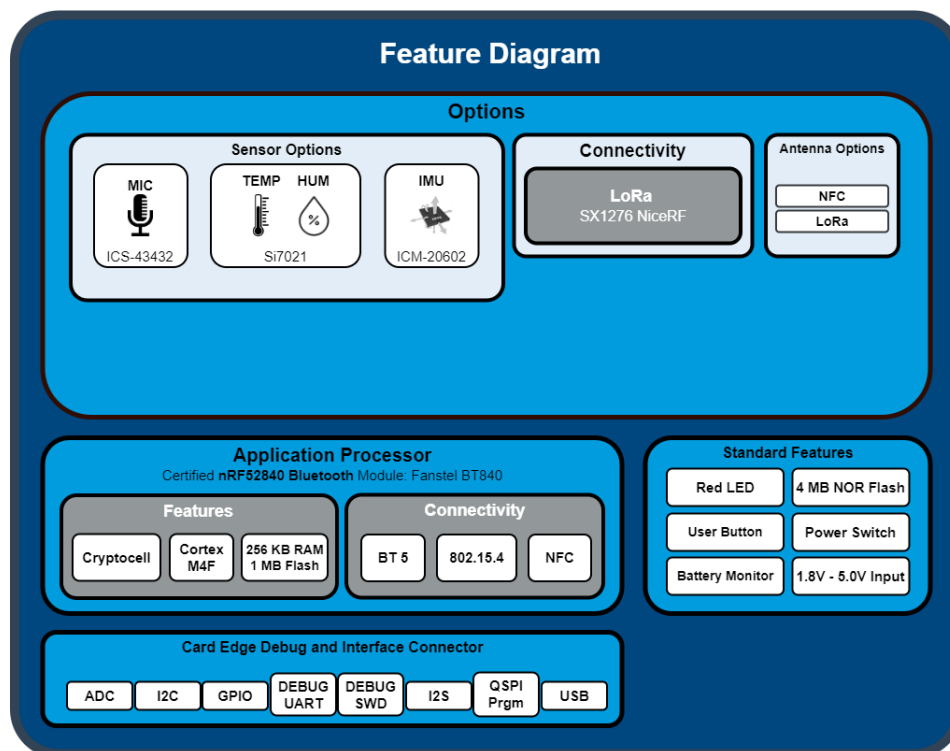


# Wireless Sensor Endpoint

## Sensor Connectivity Solution

### Features and Benefits

Feature	Benefit
ARM Mbed Enabled	Faster time to market leveraging ARM Mbed OS to accelerate application software development.
Internal Radio Antennas	No external connections with each radio having an individual antenna.
Rechargeable Battery Pack	Easily recharge the battery via USB Micro-B connector.
Mounting Tabs	Enclosure with two integrated tabs for easy installation.
Integrated Debug Interface	Ease of software development using the Wireless Sensor Development System.
Power Switch	WSE can be turned on and off as needed.
Push Button	User defined operation.



# Wireless Sensor Endpoint

## Sensor Connectivity Solution

### General Specifications

Parameter	Specification
Operating Temperature	-20°C to +60°C
Charging Temperature	0°C to +45°C
Storage Temperature	-20°C to +45°C (1-month) -20°C to +35°C (6-months)
Battery Pack	Li-Ion Polymer, 3.7V @ 4400mAh
Dimensions	60mm x 103mm x 43mm

### Sensor Specifications

Device	Specification
Relative Humidity / Temperature	±3% RH (max) 0-80% RH / ±0.4°C (max) -10°C to +85°C
6-Axis IMU Motion Tracking Device	3-axis Accelerometer: ±2/±4/±8/±16 g linear 3-axis Gyroscope: ±250/±500/±1000/±2000 dps
Microphone	Frequency response: 50 Hz to 20 kHz SNR: 65 dBA, Sensitivity -26 dB FS





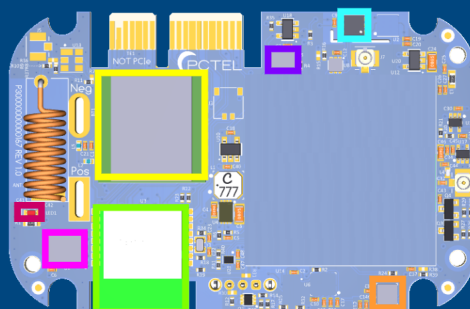
# Wireless Sensor Endpoint

## Sensor Connectivity Solution

### Component Identification Diagram

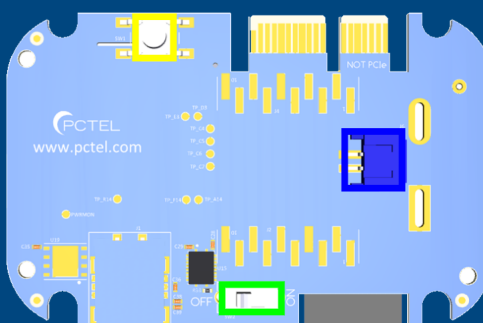
#### Top

Component	Function	COLOR
TDK ICM-20602	Accelerometer - Gyro	Red
NiceRF Lora1276	LoRa - 802.15.4 - <Gig	Yellow
BT840	MCU - BT5 - 802.15.4 - NFC	Green
SI7021	Temp - Humidity	Cyan
TDK ICS-43432	Microphone	Blue
Winbond	4MB QSPI NOR Flash	Purple
RED LED	Indicator	Magenta



#### Bottom

Component	Function	COLOR
Push Button	User button	Red
Power Switch	Slide Switch	Yellow
Battery Connector	JST	Green



## CONTACT US

For more information about  
this product contact your  
sales representative or visit  
> [pctel.com/industrial-iot-devices](http://pctel.com/industrial-iot-devices)

### Solving Complex Wireless Challenges

PCTEL is a leading global provider of wireless technology solutions, including purpose-built Industrial IoT devices, antenna systems, and test and measurement products. Trusted by our customers for over 25 years, we solve complex wireless challenges to help organizations stay connected, transform, and grow.

### Product Usage

THE PRODUCTS ARE NOT DESIGNED, MANUFACTURED, OR INTENDED FOR USE, ALONE OR WITH OTHER PRODUCTS, IN ANY APPLICATION REQUIRING FAIL-SAFE PERFORMANCE OF THE PRODUCTS AND/OR IN WHICH A MALFUNCTION OR A FAILURE OF THE PRODUCTS COULD LEAD TO DEATH, PERSONAL INJURY, OR SERIOUS PHYSICAL OR ENVIRONMENTAL DAMAGE, INCLUDING BUT NOT LIMITED TO (A) SURGICALLY IMPLANTED DEVICES, LIFE SUPPORT MACHINES, LIFE PRESERVING MEDICAL DEVICES OR SYSTEMS, OTHER MEDICAL AND SURGICAL APPLICATIONS, OR ANY DEVICES, MACHINES, SYSTEMS, PRODUCTS, OR PROCESSES REQUIRING APPROVAL, TESTING OR CERTIFICATION BY THE U.S. FOOD AND DRUG ADMINISTRATION OR A SIMILAR GOVERNMENTAL ENTITY; (B) AIR TRAFFIC CONTROL OR AIRCRAFT SYSTEMS; (C) CONTROL EQUIPMENT FOR NUCLEAR OR OTHER POWER GENERATION FACILITIES; OR (D) MISSILE, NUCLEAR, BIOLOGICAL, OR CHEMICAL WEAPONS, OR OTHER MILITARY APPLICATIONS (EACH A **"PROHIBITED USE"**).

ANY AND ALL PROHIBITED USE OF THE PRODUCTS IS STRICTLY PROHIBITED, AS IS ANY SALE OR RESALE OF THE PRODUCTS FOR A PROHIBITED USE. PCTEL SHALL HAVE NO LIABILITY FOR ANY USE OF THE PRODUCTS IN ANY MANNER FOR, OR IN CONNECTION WITH, A PROHIBITED USE. ANY SUCH USE SHALL VOID ANY WARRANTIES AND INDEMNITIES PROVIDED BY PCTEL, AS WELL AS ALL OTHER OBLIGATIONS OF PCTEL, INCLUDING, WITHOUT LIMITATION, WITH RESPECT TO SUPPORT. PCTEL SHALL NOT BE DEEMED TO HAVE CONSENTED TO OR APPROVED ANY PROHIBITED USE BY PROVIDING WARRANTY, SUPPORT, OR ANY OTHER SERVICE. ANY PARTY USING THE PRODUCTS IN A PROHIBITED USE SHALL INDEMNIFY AND HOLD HARMLESS PCTEL FROM ANY CLAIMS, LIABILITIES, AND EXPENSES ARISING IN CONNECTION WITH SUCH PROHIBITED USE.



PCTEL, Inc.

T: +1 630 372 6800 | [pctel.com](http://pctel.com)



ES France - Département RF & Hyperfréquences  
127 rue de Buzenval BP 26 - 92380 Garches



Tél. 01 47 95 99 60  
Fax. 01 47 01 16 22

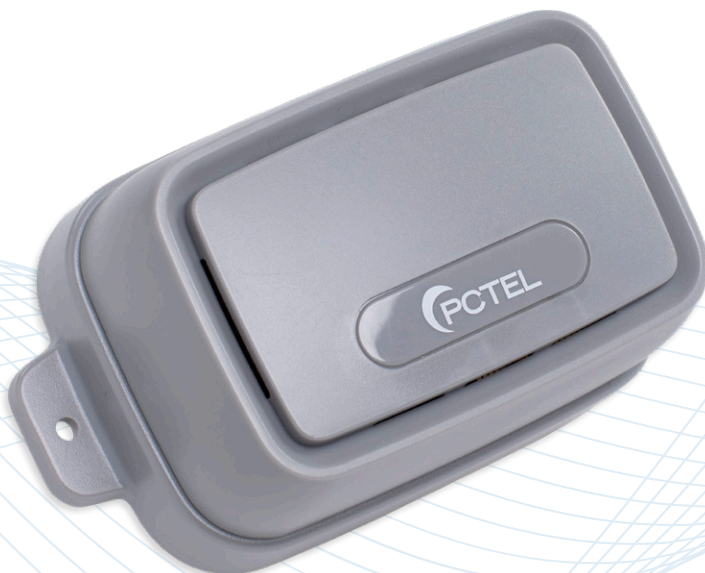


e-mail : [hyper@es-france.com](mailto:hyper@es-france.com)  
Site Web : [www.es-france.com](http://www.es-france.com)

# Wireless Sensor Endpoint

Sensor Connectivity Solution

WSE-1210



## Connectivity

- LoRa
- Bluetooth® 5
- NFC
- 802.15.4

## Features

- Cortex M4F 32-bit application processor with 1MB flash memory / 256K RAM
- 4MB external flash memory
- LED indicator
- Lithium-Ion Polymer battery pack

## Sensors

- 6-axis Inertial Measurement Unit
- Gas, Air Quality, Pressure, Temperature and Humidity
- Microphone





## Wireless Sensor Endpoint

### Sensor Connectivity Solution

The PCTEL® Wireless Sensor Endpoint (WSE) family are versatile Industrial IoT products that offer multiple radio connectivity options including LoRa, Bluetooth® 5, NFC as well as 802.15.4 support.

In addition to several radios, the PCTEL WSE family includes several sensors to monitor a variety of physical conditions. These sensors can detect air quality, acceleration, angular rate of change, and sound.

The PCTEL WSE is powered by a high capacity Lithium-Ion Polymer battery pack. The enclosure also has two mounting tabs for easy installation.

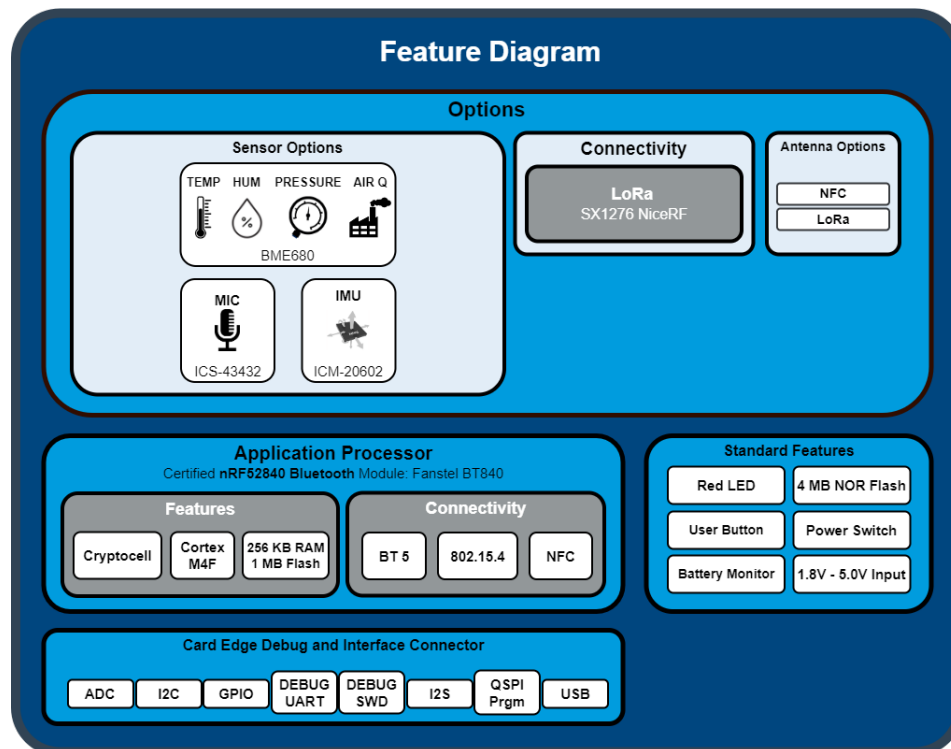


# Wireless Sensor Endpoint

## Sensor Connectivity Solution

### Features and Benefits

Feature	Benefit
ARM Mbed Enabled	Faster time to market leveraging ARM Mbed OS to accelerate application software development.
Internal Radio Antennas	No external connections with each radio having an individual antenna.
Rechargeable Battery Pack	Easily recharge the battery via USB Micro-B connector.
Mounting Tabs	Enclosure with two integrated tabs for easy installation.
Integrated Debug Interface	Ease of software development using the Wireless Sensor Development System.
Power Switch	WSE can be turned on and off as needed.
Push Button	User defined operation.



# Wireless Sensor Endpoint

## Sensor Connectivity Solution

### General Specifications

Parameter	Specification
Operating Temperature	-20°C to +60°C
Charging Temperature	0°C to +45°C
Storage Temperature	-20°C to +45°C (1-month) -20°C to +35°C (6-months)
Battery Pack	Li-Ion Polymer, 3.7V @ 4400mAh
Dimensions	60mm x 103mm x 43mm

### Sensor Specifications

Device	Specification
6-Axis IMU Motion Tracking Device	3-axis Accelerometer: $\pm 2/\pm 4/\pm 8/\pm 16$ g linear 3-axis Gyroscope: $\pm 250/\pm 500/\pm 1000/\pm 2000$ dps
Microphone	Frequency response: 50 Hz to 20 kHz SNR: 65 dBA, Sensitivity -26 dB FS
Environmental Gas / Air Quality	Gas (VOC): 20% tolerance; 5% accuracy
	Pressure: 300 to 1100 hPa ( $\pm 0.6$ hPa)
	Humidity: 10% to 90% RH ( $\pm 3\%$ ) at 0°C to +65°C
	Temperature: -40°C to +85°C ( $\pm 1^\circ\text{C}$ ), 25°C ( $\pm 0.5^\circ\text{C}$ )
	Air Quality Score: 0 to 500 ( $\pm 15\%$ )



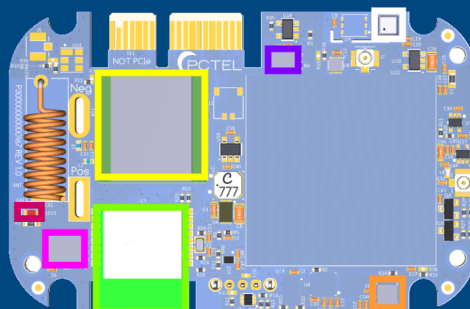
# Wireless Sensor Endpoint

## Sensor Connectivity Solution

### Component Identification Diagram

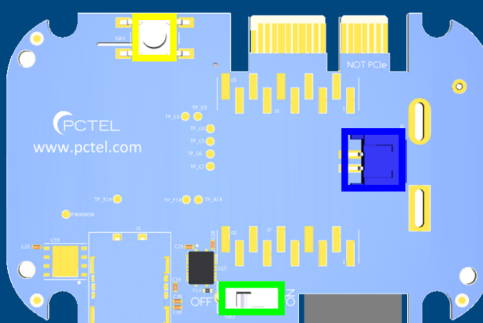
#### Top

Component	Function	COLOR
TDK ICM-20602	Accelerometer - Gyro	Red
NiceRF Lora1276	LoRa - 802.15.4 - <Gig	Yellow
BT840	MCU - BT5 - 802.15.4 - NFC	Green
BOSCH BME680	Temp - Hum - Pres - Air Q	White
		Cyan
		Blue
TDK ICS-43432	Microphone	Purple
Winbond	4MB QSPI NOR Flash	Magenta
RED LED	Indicator	Red



#### Bottom

Component	Function	COLOR
		Red
Push Button	User button	Yellow
Power Switch	Slide Switch	Green
Battery Connector	JST	Blue
		Cyan



## CONTACT US

For more information about  
this product contact your  
sales representative or visit  
> [pctel.com/industrial-iot-devices](http://pctel.com/industrial-iot-devices)

### Solving Complex Wireless Challenges

PCTEL is a leading global provider of wireless technology solutions, including purpose-built Industrial IoT devices, antenna systems, and test and measurement products. Trusted by our customers for over 25 years, we solve complex wireless challenges to help organizations stay connected, transform, and grow.

### Product Usage

THE PRODUCTS ARE NOT DESIGNED, MANUFACTURED, OR INTENDED FOR USE, ALONE OR WITH OTHER PRODUCTS, IN ANY APPLICATION REQUIRING FAIL-SAFE PERFORMANCE OF THE PRODUCTS AND/OR IN WHICH A MALFUNCTION OR A FAILURE OF THE PRODUCTS COULD LEAD TO DEATH, PERSONAL INJURY, OR SERIOUS PHYSICAL OR ENVIRONMENTAL DAMAGE, INCLUDING BUT NOT LIMITED TO (A) SURGICALLY IMPLANTED DEVICES, LIFE SUPPORT MACHINES, LIFE PRESERVING MEDICAL DEVICES OR SYSTEMS, OTHER MEDICAL AND SURGICAL APPLICATIONS, OR ANY DEVICES, MACHINES, SYSTEMS, PRODUCTS, OR PROCESSES REQUIRING APPROVAL, TESTING OR CERTIFICATION BY THE U.S. FOOD AND DRUG ADMINISTRATION OR A SIMILAR GOVERNMENTAL ENTITY; (B) AIR TRAFFIC CONTROL OR AIRCRAFT SYSTEMS; (C) CONTROL EQUIPMENT FOR NUCLEAR OR OTHER POWER GENERATION FACILITIES; OR (D) MISSILE, NUCLEAR, BIOLOGICAL, OR CHEMICAL WEAPONS, OR OTHER MILITARY APPLICATIONS (EACH A **"PROHIBITED USE"**).

ANY AND ALL PROHIBITED USE OF THE PRODUCTS IS STRICTLY PROHIBITED, AS IS ANY SALE OR RESALE OF THE PRODUCTS FOR A PROHIBITED USE. PCTEL SHALL HAVE NO LIABILITY FOR ANY USE OF THE PRODUCTS IN ANY MANNER FOR, OR IN CONNECTION WITH, A PROHIBITED USE. ANY SUCH USE SHALL VOID ANY WARRANTIES AND INDEMNITIES PROVIDED BY PCTEL, AS WELL AS ALL OTHER OBLIGATIONS OF PCTEL, INCLUDING, WITHOUT LIMITATION, WITH RESPECT TO SUPPORT. PCTEL SHALL NOT BE DEEMED TO HAVE CONSENTED TO OR APPROVED ANY PROHIBITED USE BY PROVIDING WARRANTY, SUPPORT, OR ANY OTHER SERVICE. ANY PARTY USING THE PRODUCTS IN A PROHIBITED USE SHALL INDEMNIFY AND HOLD HARMLESS PCTEL FROM ANY CLAIMS, LIABILITIES, AND EXPENSES ARISING IN CONNECTION WITH SUCH PROHIBITED USE.



PCTEL, Inc.

T: +1 630 372 6800 | [pctel.com](http://pctel.com)



ES France - Département RF & Hyperfréquences  
127 rue de Buzenval BP 26 - 92380 Garches



Tél. 01 47 95 99 60  
Fax. 01 47 01 16 22



e-mail : [hyper@es-france.com](mailto:hyper@es-france.com)  
Site Web : [www.es-france.com](http://www.es-france.com)