

NPD2706

27" FHD IP65 Sunlight Readable Multi-Touch Marine Display

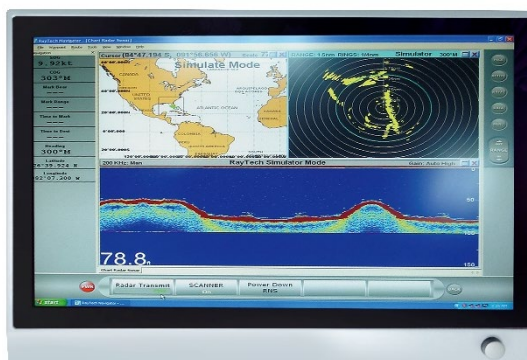
NAVPIXEL NPD2706, the high-performance, rugged touch monitor, is specially engineered to survive from the most demanding working environment. Housed in a milled billet aluminum case, the slim-profile NAVPIXEL NPD2706 is light weight and watertight. The front-mounted sunlight readable touch screen makes the industrial rugged monitor vividly and user-friendly. In addition, the high power efficiency and low heat design guarantee the stability and longevity required for mission critical deployment.

Features:

- 1200 nits Sunlight Readable LCD
- Long Life, Low Power Consumption LED Backlight
- Rotary and push knob (OSD MENU)
- Wide Operating Temperature
- Advanced Optical Bonding (AOT)
- High Shock & Vibration Resistance
- Projected Capacitive Multi-Touch Support
- Full Flat Design
- IP65 Facial Waterproof
- Isolation Power 9-36V DC Input

Application:

- Marine



Specifications

V1

Model Number	NPD2706
Description	27" FHD IP65 Sunlight Readable Multi-Touch Marine Display
Backlight	LED Backlight
Active Display Area	597.6 x 336.15
Brightness	1200 cd/m2
Resolution	1920x1080
Aspect ratio	16 : 9
Contrast Ratio	3600 : 1
Pixel Pitch (mm)	0.311(H) x 0.311(V)
Pixel per inch (PPI)	81
Viewing Angle	178°(H),178°(V)
Display Color	16.7M
Response Time	12ms
Inputs	VGaX1, DVI-Dx1, HDMIx1, DPx1, Compositex1, RS232x1, USBx1
Mechanical	
IP Rating	Facial waterproof to IP65 standards when console mounted.
Construction	Rugged SPCC Chassis
Mounting	Panel (Flush) mount, VESA mount
Dimension (mm)	660(W)x445(H)x67(D)
Net Weight	12.5Kg
Power	
Voltage	DC Input Voltage: DC 9~36V
Power Consumption	62W
Environmental	
Operating Temperature	-10°C~50°C
Non-Operating Temperature	-20°C~70°C
Certification	Designed to meet CE / FCC Class A
Marine Type Approval	

Specifications are subject to change without notice.

All brands or product names are trademarks or registered trademarks of their respective companies.



Mechanical Drawing

Outline Dimensions

Unit:mm

NOTE :
 O.D : OUTLINE DIMENSION
 B.O : BEZEL OPENING
 A.A : LCD ACTIVE AREA

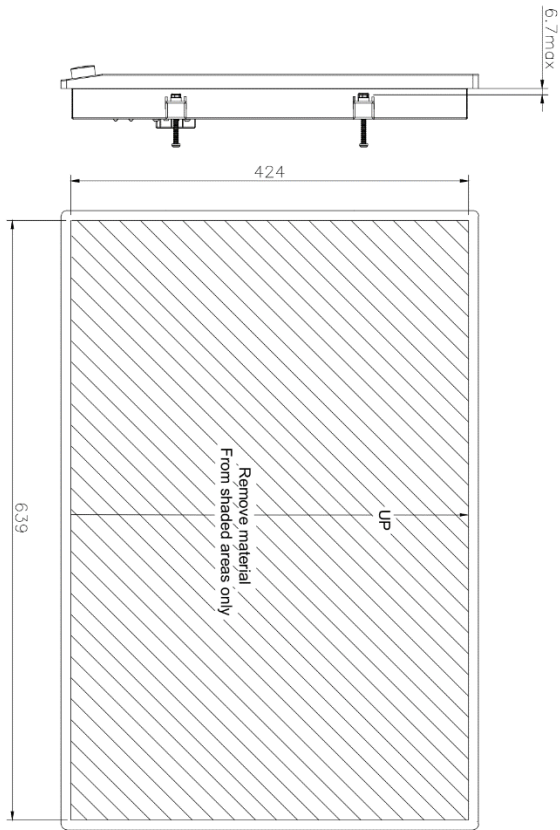
APPROVED	CHECKED	DESIGNED	LEVEL	General tolerance	SELECT LEVEL	MATERIAL	FINISH	CRITICAL DIMENSION	SPEC DIMENSION
			DIM.	0.4	0.05	0.1			
			> 4 - 14	0.05	0.1				
			> 14 - 43	0.1	0.3				
			> 43 - 250	0.2	0.6				
			> 250 - 500	0.3	1.2				
			> 500 - 650	0.4	1.5				

REV	ECN NO	DESCRIPTION	SIGN	DATE

UNIT	SCALE	WEIGHT	INDE. GENERAL TOLERANCE	3rd ANGLE	ORIGINAL NOTE
mm					NPD2706
TITLE					
DIM					
DESCRIPTION					
NPD2706-ATA-P01					
DRAWING NO (PART NO)					
ZT 1200ms 1920x1080 PCT-480T 90%ALD27B.A0220G0HPVR.0FR.VR.A01.V1					
LiteMax					
LiteMax Electronic Inc.					
SIZE	SH	REV	DATE		
A4	1-2	V1			



REV	EDN. N°	DESCRIPTION	SIGN	DATE



APPROVED	CHECKED	DESIGNED	LEVEL	General tolerance ±	SELECT LEVEL	MATERIAL FINISH	DATE
		Eric Lin	0 ~ 4	1 0.05 0.1 0.2 0.3	1 2 3		20/20/06/5
			> 4 ~ 14	0.05 0.1 0.2 0.3			
			> 14 ~ 50	0.1 0.2 0.3 0.5			
			> 50 ~ 100	0.2 0.3 0.5 1			
			> 100 ~ 400	0.3 0.5 1 2			
			> 400 ~ 600	0.5 1 2 3			

UNIT	SCALE	WEIGHT	ANGLE	GENERAL TOLERANCE	3rd Angle	ORIGINAL MODEL
mm						
TITLE						
DRAWING PART NO. Dimension						
DESCRIPTION NPDD2706-ATA-P01						
Litemax Electronic Inc.						
SIZE	A4	SHEET		2-2		REV
						V1



Ordering Information

Part Number	Description
NPD2706-ATA-P01	27",1200nits,1920x1080,PCT-usb(T:90%),LID27B,AD8220GDHPVR,O/F,VR,AOT,V1

Optional Accessories

Part Number	Description
112615315401 x (4)	Metal,SPCC,NPS,1531,Lock,V0,P
214032121101 x (4)	Screw,M4,32mm,Round,Ni,P
460100002101 x (4)	Fixture,other,MP-4,V0,P
810618301010 (Optional)	CABLE.POWER.AC.1830mm USA type
810618301090 (Optional)	CABLE,POWER,AC,1830mm Europe type
810618301050 (Optional)	CABLE.POWER.AC.1830mm UK type
810618301170 (Optional)	CABLE.POWER,AC,1830mm Australia type
810618301030 (Optional)	CABLE.POWER.AC.1830mm Japan type