

QC-121D2 Box Compression Tester (20kN. 50kN)

Standard

ISO 12048 、 ISO 2872 、 ASTM D4169 、 TAPPI T804 、
GB T4857-4 、 JIS-Z-0403-2 、 ASTM D642 、 GBIT 16491 、 DIN 55440-1

Industry

Paper, Food, Beverage, Package



Description

QC-121D2 is used to test the compression strength of large package materials such as cartons, foam, styrofoam, etc. It can measure capacity and deformation of samples against compression, which is a key point for logistics and warehouse management. QC-121 type machine uses 3-point force measurement, which can increase the accuracy of force sensing. The upper platen can be adjusted to be fixed or swiveled to meet the standard.

The machine is equipped with standard 7" color touch display panel. The panel can display the real-time curve graph and relative data simultaneously. The optional dedicated software can analyze, export reports and manage data.

Machine Feature

- The upper platen can be adjusted to be fixed or swiveled to meet the standard.
- The 3-point type force sensor can increase accuracy of force sensing.
- High stiffness of construction.
- Multiple machine protection mechanisms (limits and system protection).
- Has standard display panel for stand-alone operation.
- Raw data can be saved through USB for further analysis.



Machine Specification

Model	QC-121D2 (A)	QC-121D2 (B)	QC-121D2 (C)	QC-121D2 (D)
Test space	100 × 100 × 120 cm	120 × 120 × 120 cm	100 × 100 × 120 cm	120 × 120 × 120 cm
Max. capacity	2000kg (20kN)		5000kg (50kN)	
Plate Type	Fixed and floating type upper plate, users can change the mechanisms by themselves.			
Units	Force : gf, kgf, lbf, N, kN, ozf, tonf(SI), ton(long), tonf(short) Pressure : Kpa, Mpa, psi, bar, mm-Aq, mm-Hg			
Force Resolution	1/10,000 (23 bits)			
Force Precision	± 1% (within 5%-100% of load cell capacity)			
Stroke Resolution	0.0125 mm			
Speed Range	2 ~ 200mm/min			
Speed Precision	± 1%			
PC-Port	RJ45 (TCP/IP) [Software is optional]			
Data Sampling Rate	Max. 1200 Hz			
Motor	DC Motor			
Hardware Protection	Upper/Lower limit, Emergency Stop Button			
Power	Single Phase 200~240VAC · 5A			
Dimension (WxDxH)	162 × 100 × 195 cm	182 × 120 × 195 cm	162 × 100 × 195 cm	182 × 120 × 195 cm
Weight	800 kg	900 kg	850 kg	950 kg

Display Panel



- 7" color touch TFT display panel is used.
- Chinese, English, Japanese are supported.
- Displays force, pressure, displacement and time.
- Supports test speed, units, information display, protection and curve graph settings.
- Supports switching between Metric and Imperial units.
- Can save up to 50 test results.
- Supports saving data to USB.

Optional Accessories - Software

- The data sampling rate is up to 1200 Hz.
- Data analysis.
- Windows system required.
- Chinese, English, Japanese, Korean and Spanish are available.
- Operation Mode: TCP/IP two-way transmission to connect with PC.
- Can import multiple test data and display at the same time.
- Supports Metric and Imperial units switching.
- Can adjust items of the table for data analysis.
- Can name the data results.
- Data can be shown through the table, graph, or both.
- Data processing: save, import, list, statistical comparison, and so on.
- The X-Y axis of the graph is adjustable including force, displacement, time, strain, stress, and so on.
- Compression test is available.
- Supports over travel, overload, over time stop conditions as machine protection.



Carton compression test



Date 2018/02/08
Time 09:00:59

Company Information

Name Cometech Testing Machines Co., Ltd.
Address No.49, Ln. 38, Uancun Rd., Fengyuan Dist, Taichung City, 42082 Taiwan(R.O.C)
E-mail : sales@come-tech.com.tw
Tel 04-25308881
Fax 04-25308883

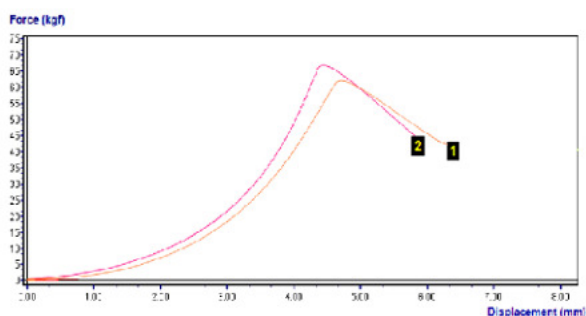
Specification

Test Speed 12.7 mm/min

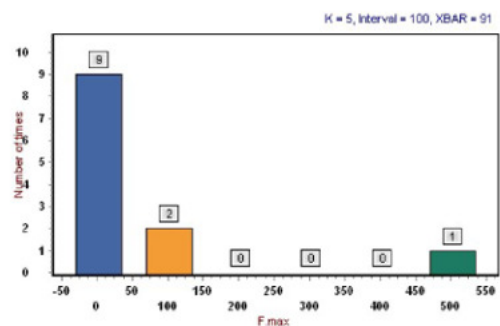
Data Table

Item1	F max	S max	S.sp1	S.sp1	F.sp5	F.sp5
Item2			10 kgf	20 kgf	3 mm	4 mm
Unit	kgf	mm	mm	mm	kgf	kgf
1	61	5.80	1.92	2.27	58	57
2	65	3.78	1.23	1.89	58	54
Max	65	5.80	1.92	2.27	58	54

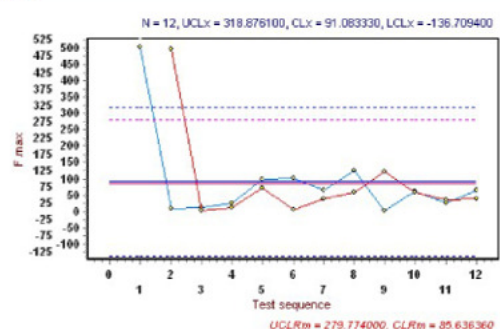
Graph



Histogram



Control Chart



Tested By :

Approved :

2

*Cometech reserves the right to change any of the specification of this product at any time .

