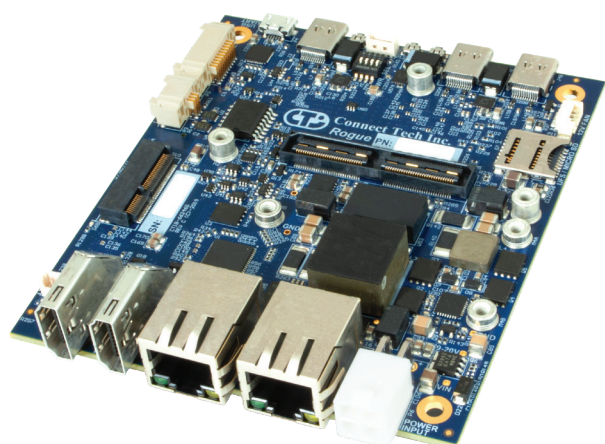


Rogue-X is a full featured carrier board specifically designed for commercially deployable platforms.

The Rogue-X allows for the Jetson AGX Xavier to interface up to two XIMEA xiX embedded vision cameras, each camera can utilize a PCIe Gen2 x4 connection. In addition, the Rogue-X can also interface to 3x USB 3.1, 2x GbE, 2x HDMI and a locking Mini-Fit Jr. power input connector.



Rogue-X is an ideal fit for high-end PCI Express based embedded vision and multi-camera applications.

FEATURES

- ✓ Commercially deployable NVIDIA® Jetson AGX Xavier™ platform
- ✓ 6x 2-lane or 4x 4-lane MIPI CSI Camera Inputs
- ✓ 2x ximea xiX Camera Inputs (PCIe Gen2 x4 each)
- ✓ 1x M.2 M-Key NVMe PCIe x2, 3x USB 3.1, 2x GbE
- ✓ Wide input power range 9-19V DC
- ✓ Dimensions: 105mm x 105mm

SPECIFICATIONS

NVIDIA GPU SoC Module Compatibility	NVIDIA® Jetson AGX Xavier™	Networking	2x Gigabit Ethernet (8p8c RJ-45) 1 Port from RGMII PHY Controller 1 Port from PCIe PHY Controller
Display Output	2x HDMI (Type-A vert RA) (Supports up to HDMI 2.0 UHD 4K [2160p] at 60Hz)	Camera Inputs	<ul style="list-style-type: none"> • 2 PCIe Gen2 x4 Connections (for XIMEA xiX cameras) • 6 x2 Lane MIPI CSI-2 or • 4 x4 Lane MIPI CSI-2
USB	3x USB 3.1 Ports (Type-C)	Storage	1x M.2 M-Key NVMe PCIe x2 1 x Micro SD/UFS Card Slot
UART	2x @ 3.3V levels UART0 and UART1 Micro USB Debug UART	I2C/SPI	1x I2C Channel @ 3.3V IO 1x SPI Channel @ 3.3V IO
CAN	2x CAN 2.0b Port	GPIO	4 bits of 3.3V (level shifted GPIO)
User Expansion	<ul style="list-style-type: none"> • 2 PCIe Gen2 x4 interfaces can be used for general purpose External PCI Express connections • 1 x M.2 Key E Slot with PCIe & USB (WiFi + BT modules) 	Input Power	9-19V DC Wide Input Power (4-pin Mini-Fit Jr Connector) 14-19V required for full camera support with GPU under load
Buttons	Power, Reset, Recovery (Tactile Buttons as well as fine pitch pin header connector)	RTC Battery	3-pin Picoblade connector to accept CTI battery cable assembly
PCB/Electronics Mechanical Info	105mm x 105mm (4.13" x 4.13"); 103g (3.63oz) Compatibility with both Development and Production modules		

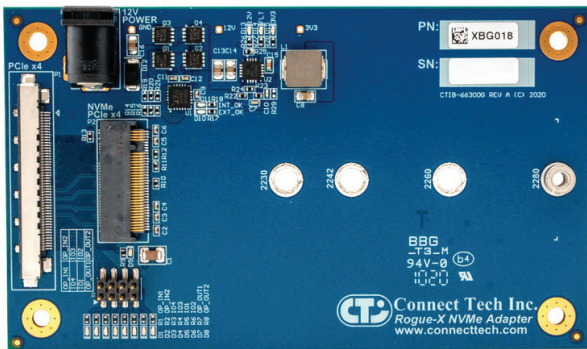


Rogue-X NVMe Breakout Board has been developed for when one M.2 storage slot is not enough.

This product is ideal for adding additional storage capacity for embedded vision and multicamera applications.



Connect Tech Inc.
Rogue-X NVMe Adapter
www.connecttech.com



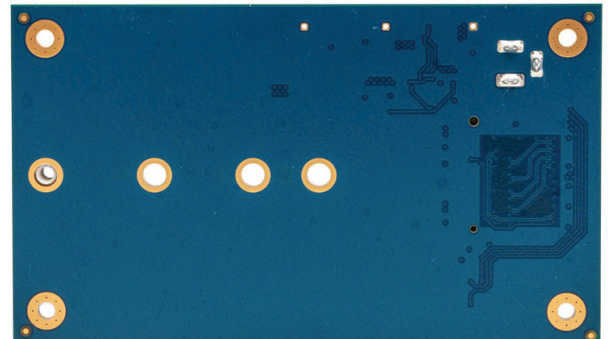
Rogue-X is an ideal fit for high-end PCI Express based embedded vision and multi-camera applications.

FEATURES

- ✓ Expand Rogue-X storage with up to 2 additional M.2 slots
- ✓ Comes bundled with 20cm cable and mounting stud for 2280 length NVMe
- ✓ Auxillary Power supply always favoured over AGX103 supply
- ✓ Extended Temperature Range: -40°C to +85°C (-40°F to +185°F)

SPECIFICATIONS

CTI Carrier Compatability	Rogue-X (AGX103)
Storage	1x NVMe M.2 Key M Slot
Module Lengths	Accepts 2230, 2242, 2260 and 2280 length modules
Host Interfaces	PCIe x4, GPIO x8
Input Power	<ul style="list-style-type: none">• 12V direct from AGX103 or• 12V 2.1mm center positive barrel jack
Temperature	-40°C to +85°C (-40°F to +185°F)
Dimensions	107.95 x 63.5 mm (4.25" x 2.50")
Warranty and Support	1-year warranty and free technical support



RoHS

Specifications subject to change without notice. ©2021 Connect Tech Inc. All trademarks are property of their respective holder. CTIX-00183(0.06) - 2021-07-19

