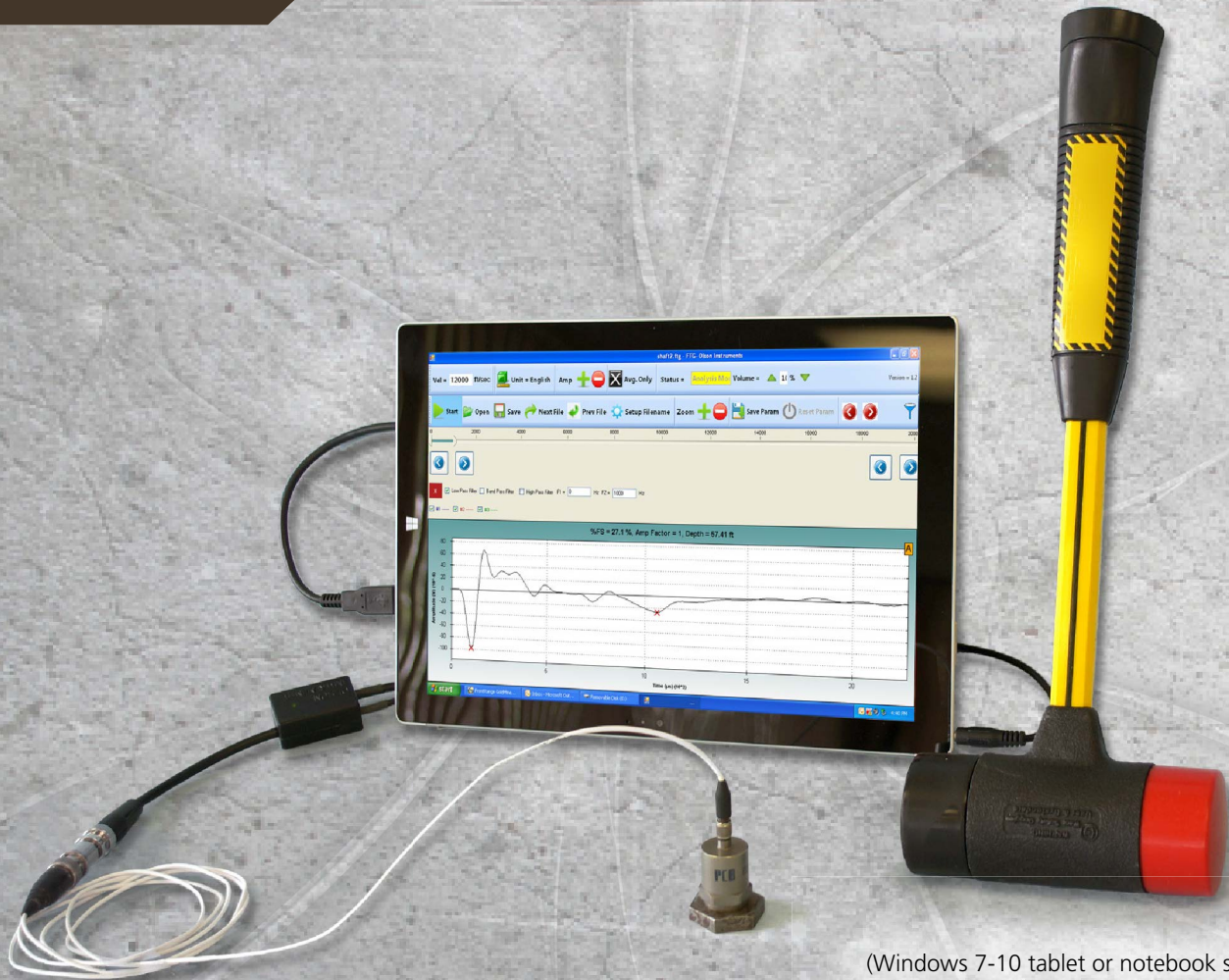


# FOUNDATION TEST GAUGE

MODEL FTG-1



(Windows 7-10 tablet or notebook supplied by user)

**Based on the Sonic Echo Principle**

## Meets ASTM Standard D5882

Measure the depth and integrity of shafts and piles.

Ideal for testing cell tower foundations.



12401 W. 49th Ave.  
Wheat Ridge, CO USA 80033  
ph: 303.423.1212  
fax: 303.423.6071  
[www.OlsonInstruments.com](http://www.OlsonInstruments.com)



ES France - Département Bio-tests & Industries  
127 rue de Buzenval BP 26 - 92380 Garches



Tél. 01 47 95 99 90  
Fax. 01 47 01 16 22



e-mail : [bio@es-france.com](mailto:bio@es-france.com)  
Site Web : [www.es-france.com](http://www.es-france.com)



## Applicable For:

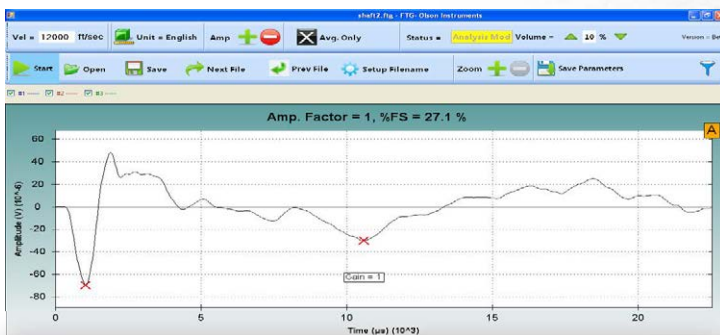
- Drilled Shafts
- Driven Concrete Piles
- Timber Piles

## Test For:

- Deep Foundation Depth
- Integrity:
  - Cracks
  - Voids
  - Soil/Water Intrusions
  - Uncured or Weak Concrete
- Diameter Changes (bulb, neck or break)

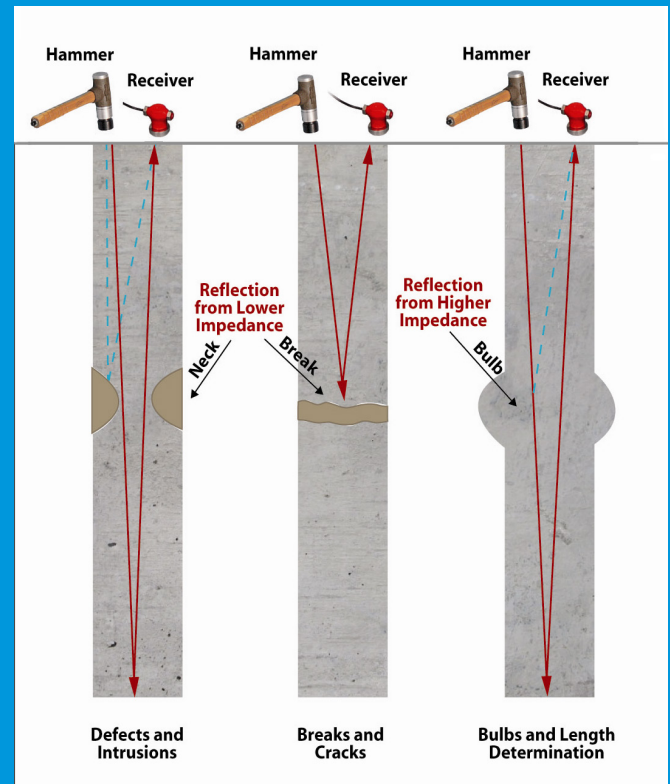
## Features:

- Small, lightweight and easily transported
- Fast and accurate field measurements
- Real-time waveform display while testing
- Digital filtering of data
- Switch between english and metric units
- Save results for later review
- Includes accelerometer receiver and cables
- Includes 3 lb (1.4 kg) non-instrumented hammer with removable tips
- The FTG system must be used with a Windows 7-10 device running Olson Instruments' FTG software. **The computer or tablet is supplied by the user.**



Olson's FTG Software showing sonic echo waveform

## SONIC ECHO TEST METHOD



## About Olson Instruments

Headquartered in Wheat Ridge, Colorado, USA, Olson Instruments specializes in **Nondestructive Evaluation** equipment for the civil engineering industry. We are an established manufacturer of sensors and data collection systems since 1993.

Olson Engineering Inc. specializes in **Nondestructive Evaluation and Internal Condition Assessment of Civil Infrastructure** throughout the world as well as **Geophysical Services** for engineering purposes.

To learn more visit:  
[OlsonInstruments.com](http://OlsonInstruments.com)  
[OlsonEngineering.com](http://OlsonEngineering.com)



Version 03.2020

INSTRUMENTS FOR INFRASTRUCTURE IMAGING  
**NDE, SHM & GEOPHYSICAL INSTRUMENTS**



ES France - Département Bio-tests & Industries  
127 rue de Buzenval BP 26 - 92380 Garches



Tél. 01 47 95 99 90  
Fax. 01 47 01 16 22



e-mail : [bio@es-france.com](mailto:bio@es-france.com)  
Site Web : [www.es-france.com](http://www.es-france.com)