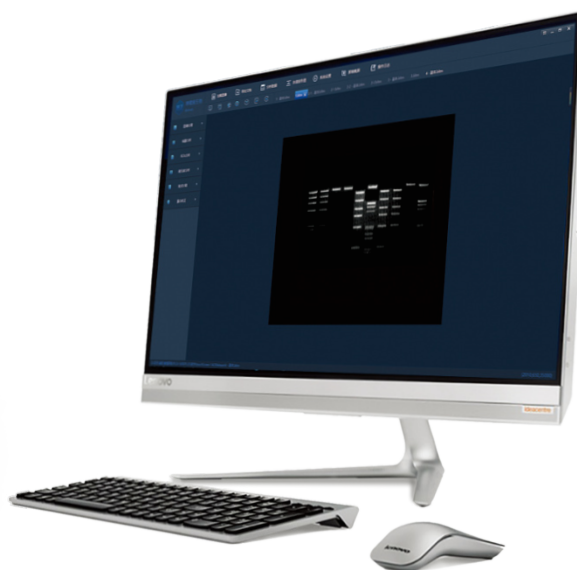
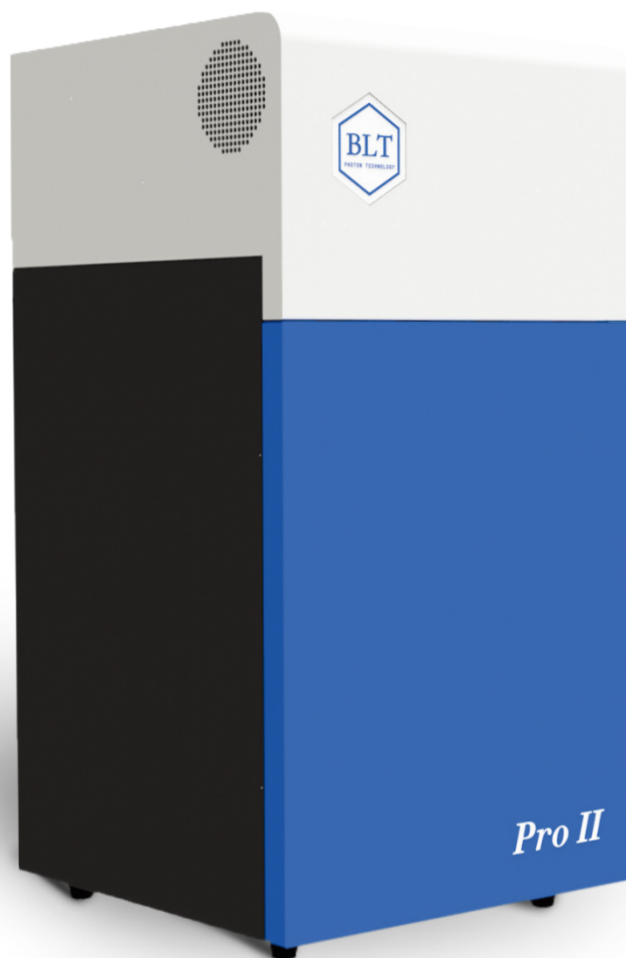




GelView 6000Pro II

Multi-functional Imaging Station



ES France - Département Bio-tests & Industries
127 rue de Buzenval BP 26 - 92380 Garches



Tél. 01 47 95 99 90
Fax. 01 47 01 16 22



e-mail : bio@es-france.com
Site Web : www.es-france.com

FEATURES

Sensitive

The GelView 6000 pro II uses a 6.0 megapixel scientific-grade refrigerated CCD camera with a cooled temperature down to -55°C and a fixed-focus F0.95 lens to easily capture fluorescence and luminescence signals.

Modularization

The instrument is modular in design, with modules for nucleic acid gel imaging, chemiluminescence imaging, multicolor fluorescence imaging, and in vivo imaging, and can be customized to meet your own experimental needs (subsequent upgrades are supported).

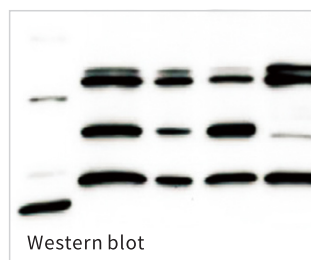
Intelligentize

Equipped with a laser positioning system for facilitate sample positioning, a pressure-sensitive switch on the transmissive sample table for instantaneous cutting, and an intelligent breathing light to reflect the instrument's operating status in real time, the gas port is reserved for in vivo animal imaging with the gas intoxication system.

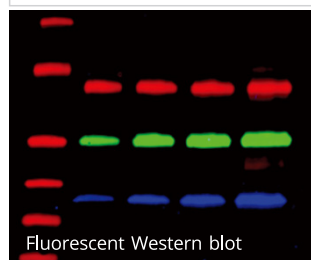
User-friendly

Installed with the personalized photographic and analysis software. Bilingual switch between Chinese and English. Simple operation, easy imaging, powerful analysis software, image processing, strip analysis, grayscale analysis, colony counting, microplate analysis, etc. can be easily handled, and analysis reports can be output.

Camera	Deep-cooled scientific-grade CCD camera
Cooling Temperature	Down to -55 °C
Resolution	2688×2200
Pixel Size	4.54 μm×4.54 μm
Quantum Efficiency	>75%@600 nm
Lens	F0.95 or F0.80 (optional), Wide angle lens autofocus
Dark Current	0.00017e ⁻ /pixel/s@-20°C
Dynamic Range	>4.8 orders of magnitude
Field of View	12cm×14cm (upper), 15cm×18cm (lower)
Light Source	LED irradiation white light 470nm transmitted blue light or 306nm transmitted UV (optional)
Filter (optional)	Excitation: blue light 470nm, green light 530nm, red light 625nm, NIR 660nm, NIR 730nm Emission: 520nm, 600nm, 680nm, 750nm, 820nm Light transmittance ≥ 90%, cut-off depth: OD6
Gas Anesthesia System (optional)	Gas output: 0-10 L/min Oxygen output; concentration: 35%-93% adjustable; Applicable anesthetics: Isoflurane
Case Size	720mm×370mm×370mm (H×W×D)
Instrument Weight	35kg



Western blot



Fluorescent Western blot



In vivo imaging

