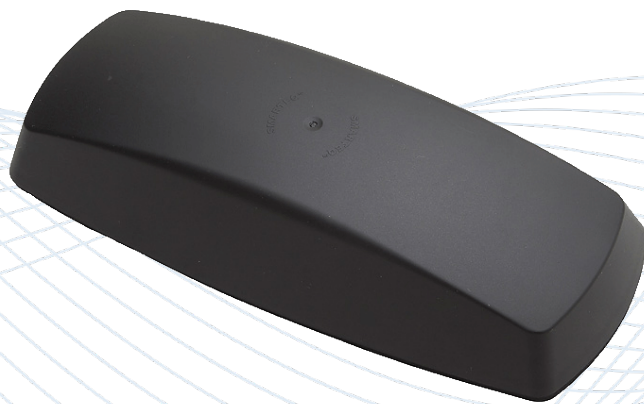


DATASHEET LTE450/LMR/TETRA/P25

Smarteq™ LPCA 8 Low Profile Combination Antenna

LTE450/LMR/TETRA/P25/ISM

710494



Description

LPCA 8 is a rugged, low profile combination antenna.

Technologies

- TETRA
- LoRA
- ISM 433/444

Features

- 410-430 MHz with an extended range 380-450 MHz
- Ground plane independent
- Rugged
- IP67
- Cable approved acc ECE-R118



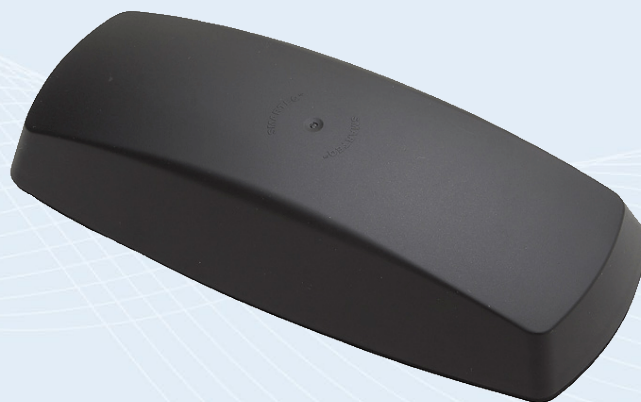
ES France - Département RF & Hyperfréquences
127 rue de Buzenval BP 26 - 92380 Garches



Tél. 01 47 95 99 60
Fax. 01 47 01 16 22



e-mail : hyper@es-france.com
Site Web : www.es-france.com



Smarteq™ LPCA 8 Low Profile Combination Antenna

LTE450/LMR/TETRA/P25

The Smarteq™ LPCA 8 is a rugged, low profile combination antenna designed for use in telematics applications. The antenna is the perfect choice when the application needs reliable communications for e.g. buses, heavy vehicles, ambulances, forest machines and other M2M applications.

Features

- 410-430 MHz with an extended range 380-450 MHz
- Ground plane independent
- Rugged
- IP67
- Cable approved acc ECE-R118

Applications

- Buses
- Heavy Vehicles
- Ambulances
- Forest Machines
- M2M

Certifications



SPECIFICATIONS

Smarteq™ LPCA 8 Low Profile Combination Antenna

LTE450/LMR/TETRA/P25

Standard Configurations

Part Numbers	Connector Type
710494	FME-f

Electrical Specifications – All Models

Frequency Ranges	380-410 MHz	410-430 MHz	430-450 MHz
Gain	6.5 dBi on metal 4.5 dBi free space	5.5 dBi on metal 5.5 dBi free space	3.5 dBi on metal 1 dBi free space
VSWR	<1.9:1	<1.7:1	<3:1
Nominal Impedance	50Ω		
Polarization	Vertical		
Radiation Pattern (Horizontal)	Omnidirectional		
Max. Power	20W		

Mechanical and Environmental Specifications – All Models

Dimensions	280 x 120 x 50mm
Installation	Hole mount, Ø19mm and 2 x Ø7mm Installation thickness ≤ 6mm
Connector	FME-f
Cable	RG316 0,5 m
Color	Black
IP class	IP67
Operating / Storage Temperature	-40°C to +85°C



CONTACT US

**For more information about
this product, contact your
sales representative or visit
> pctel.com/antenna-products**

Solving Complex Wireless Challenges

PCTEL is a leading global provider of wireless technology solutions, including purpose-built Industrial IoT devices, antenna systems, and test and measurement products. Trusted by our customers for 29 years, we solve complex wireless challenges to help organizations stay connected, transform, and grow.



PCTEL, Inc.

T: +1 630 372 6800 | pctel.com