

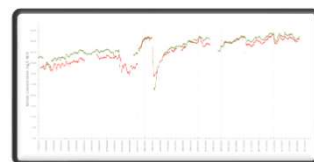


## DropletSens™

Advanced microfluidic water sensor platform

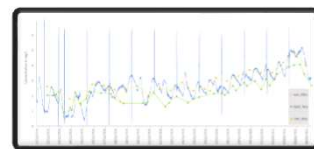
Bringing the lab to the water  
for data-driven decision making

### Environmental Monitoring Catchment Management



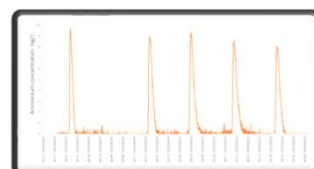
- Multi-months in-situ deployability with continuous remote monitoring
- Provides early warning of catchment-zone contamination

### Effluent Monitoring Avoiding Discharge Penalties



- Continuous lab-quality monitoring of key outflow parameters
- Prevents legislation breaches and expensive discharge penalties

### Process Control Optimised Dosing & Aeration



- Provides accurate real-time data for closed-loop process control
- Enables optimised dosing, aeration etc. to minimise operating costs





## SENSOR PROBES

- *Mobile in-situ use up to 2m depth*
- *Battery operated*
- *Remote connectivity*
- *Optionally mounted to monitoring buoy/platform*

## Online Analyser

- *Fixed installation for inline use*
- *Mains powered*
- *SCADA/network connectivity*
- *Stand-alone or OEM*



### PERFECTLY SUITED FOR CONTINUOUS WATER MONITORING

✓ Lab-quality data ✓ High-frequency data ✓ Autonomous operation ✓ Low cost & low maintenance

Versatile – fresh & sea water Adaptable – new tests implementable Customisable – format, analyte, range

### MEASURING KEY NUTRIENTS

**NO<sub>3</sub>/NO<sub>2</sub>**

**NH<sub>4</sub>**

**PO<sub>4</sub>**

Measurement frequency: up to 8,000 times/day

Reagent consumption: 0.0001 mL/measurement

Reagent cartridge lasts for 3 months and with onboard QC standard – simple to replace

### ANALYTICAL PERFORMANCE FOR STANDARD PRODUCTS\*

ANALYTE	RANGE	LOD
Nitrate NO <sub>3</sub>	0 – 100 mg/L NO <sub>3</sub>	0.19 mg/L NO <sub>3</sub>
Nitrite NO <sub>2</sub>	0 – 75 mg/L NO <sub>2</sub>	0.14 mg/L NO <sub>2</sub>
Ammonium NH <sub>4</sub>	0 – 35 mg/L NH <sub>4</sub> -N	0.01 mg/L NH <sub>4</sub> -N
ortho-Phosphate PO <sub>4</sub>	0 – 8 mg/L PO <sub>4</sub> -P	0.01 mg/L PO <sub>4</sub> -P
Others	In development	
* Customisable in terms of range & LOD		

