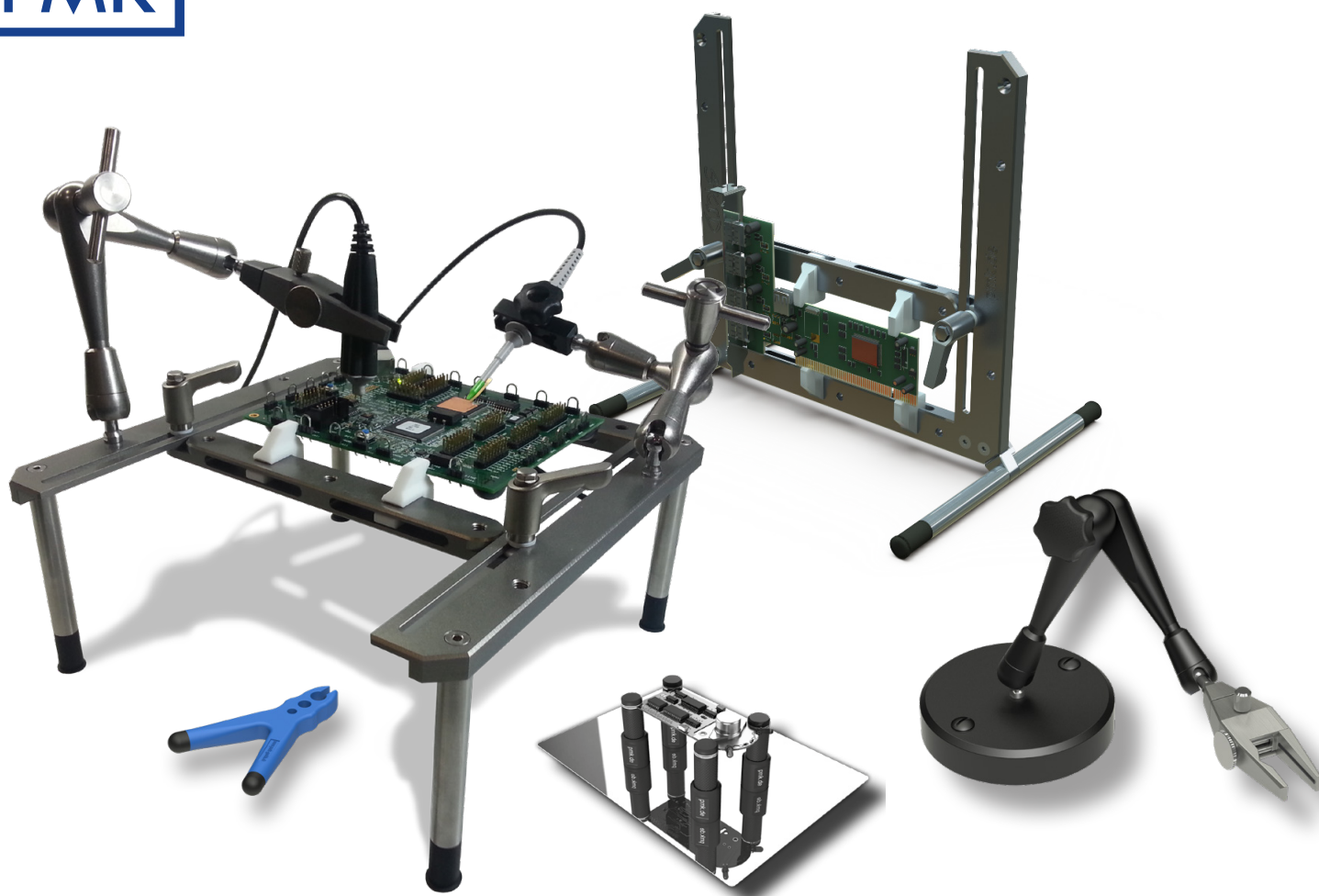




**Probing Solutions.
Made in Germany.**

EN



Positioning System Series

Test & Debugging Platforms for Daily Use

Datasheet



ES France - Département Tests & Mesures
127 rue de Buzenval BP 26 - 92380 Garches



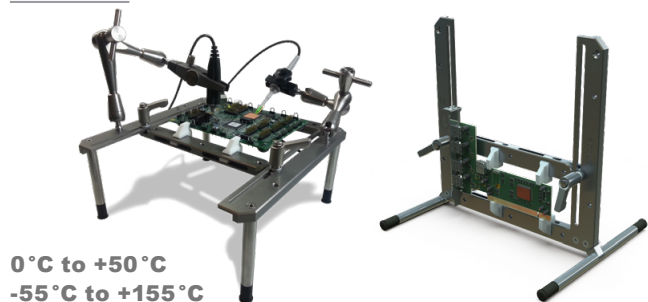
Tél. 01 47 95 99 45
Fax. 01 47 01 16 22



e-mail : tem@es-france.com
Site Web : www.es-france.com

SKID® Positioning Systems

Overview



0 °C to +50 °C
-55 °C to +155 °C

SKID® is a unique platform designed to satisfy all sorts of different demands on PCBA testing and debugging in one single item. It offers a modular design, which enables the user to expand the SKID® according to his needs.

The frame is available in three versions: SKID®S offers a clamping width of at least 160x160 mm, which fits the 3U standard PCB form factor, SKID®M for 6U cards and SKID®L with a clamping width of 300x340 mm. Of course smaller boards can be tested as well. The PCBA spacers can be positioned to clamp most geometrical forms; even inconvenient non-standard shapes, that are usually hard to clamp.

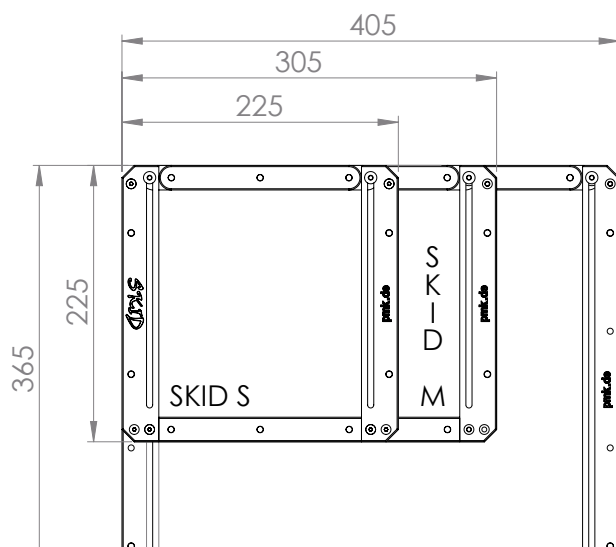
The PCBA resides 10 mm above the frame, offering a better accessibility to the dut and the SKID® itself stands on 90 mm pedestals, enabling access from top- and bottom-side simultaneously. Standard M6 threads are all around the frame to mount equipment, such as probe positioners, lamps or other accessories.

Key Features:

- Handsfree testing & debugging
- Fast and universal setups
- Intuitive clamping system
- Environmental testing



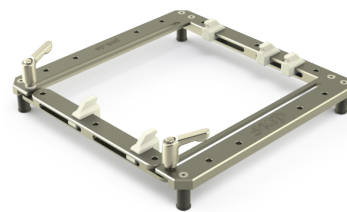
Dimensions



The following configurations can be built with any SKID:

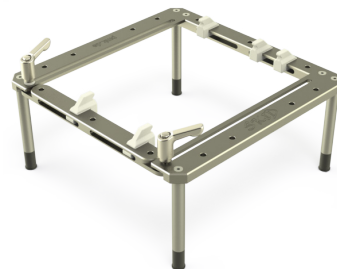
Flat Assembly

- With 20 mm stilts.
(e.g. as soldering device)



Standard Assembly

- With 90 mm stilts.



Vertical Assembly

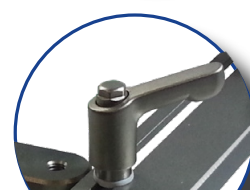
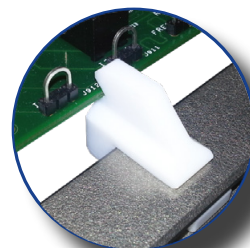
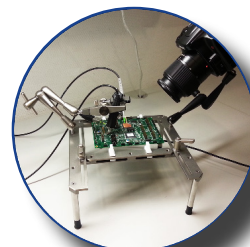
- For operation from 2 sides.



Temperature Range

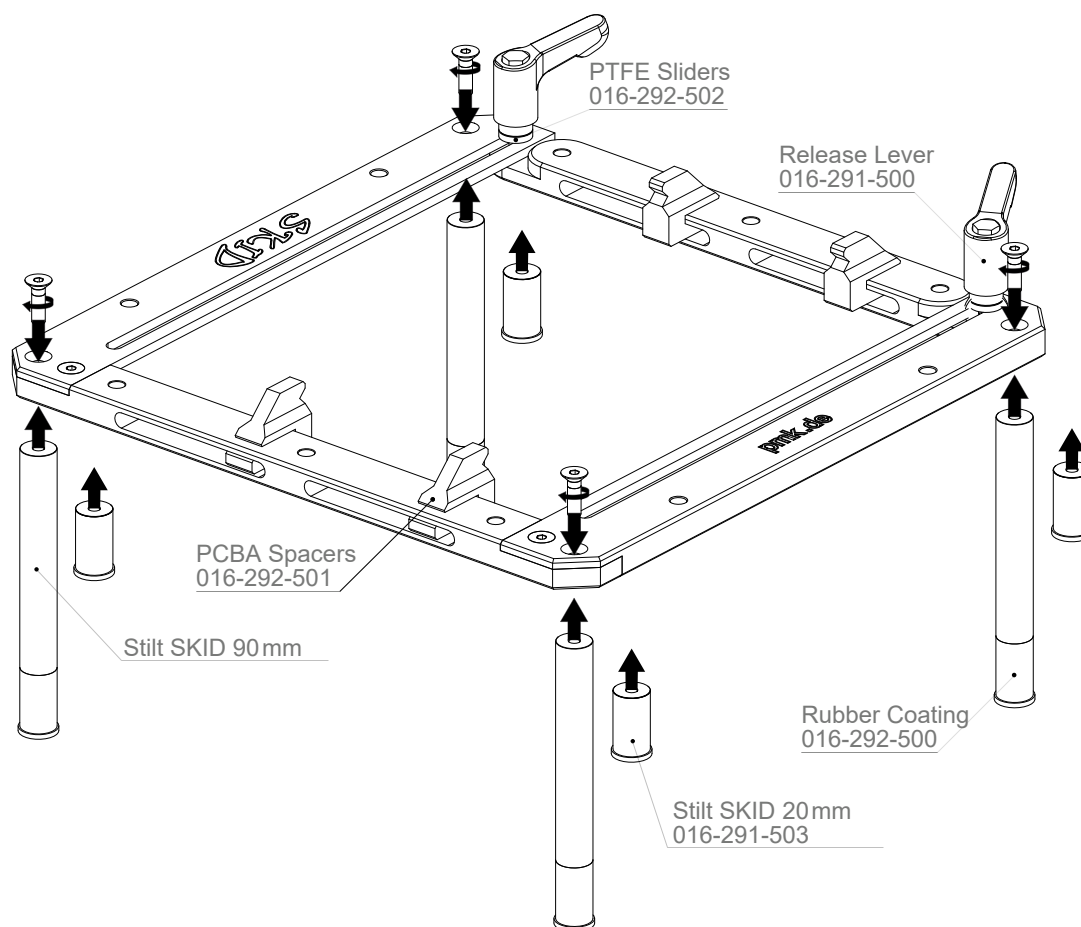
Depending on its configuration, SKID® can be used from 0 °C to +50 °C, or for environmental testing in climate chambers for temperatures from -55 °C to +155 °C, each with non-condensing humidity, depending on chosen model.

SKID® is available in three sizes. SKID®S for 3U PCB's, SKID®M for 6U PCB's and SKID®L for any PCBA's larger than the 6U standard. Since the frame consists only of a few parts, the set-up of the SKID® is done in a breath. M6 threads all around the frame allow mounting of multiple accessories, such as test equipment, lighting and magnifiers or even cameras to record or stream video. e.g. thermal images. The low gravity center of the SKID® allows even comparable large and heavy devices to be mounted.

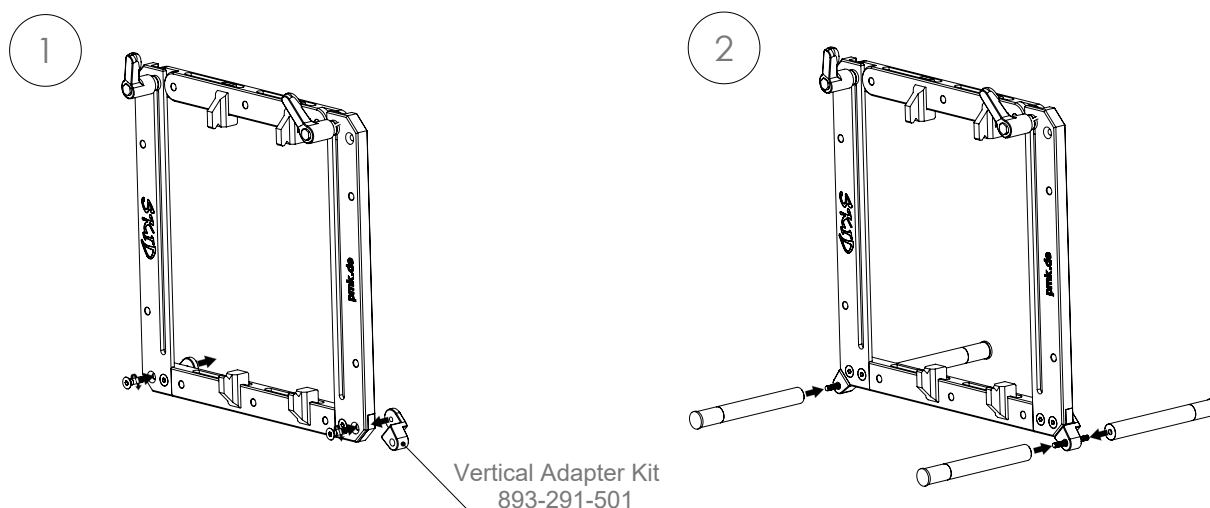


SKID® Assembly

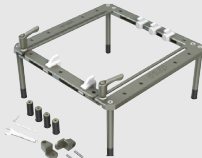





Horizontal Assembly:



Vertical Assembly:



Ordering Information: SKID®

SKID-S, 3U Board Tester, (160 x 160 mm) Order No.: 893-500-000	 -55°C to +155°C	<ul style="list-style-type: none"> • <u>1x Frame SKID-S, 3U Board Tester</u> Order No.: 893-500-000 • <u>1x Single Head Wrench SW 7mm</u> Order No.: 893-000-SW7 • <u>1x Allen Wrench 2.5 mm</u> Order No.: 893-000-I25 • <u>1x Skid Vertical Adapter Kit</u> Order No.: 893-291-501 • <u>4x Stilt SKID 2cm</u> Order No.: 016-291-503 • <u>4x Stilt SKID 9cm</u> 	SKID-S Starter Kit, 3U Board Tester, (160 x 160 mm) Order No.: 893-500-START	 0°C to +50°C	<ul style="list-style-type: none"> • <u>1x SKID-S, 3U Board Tester</u> Order No.: 893-500-START • <u>1x Single Head Wrench SW 7mm</u> Order No.: 893-000-SW7 • <u>1x Allen Wrench 2.5 mm</u> Order No.: 893-000-I25 • <u>1x Skid Vertical Adapter Kit</u> Order No.: 893-291-501 • <u>4x Stilt SKID 2cm</u> Order No.: 016-291-503 • <u>4x Stilt SKID 9cm</u> • <u>1x Uniholder</u> Order No.: 893-090-000 • <u>1x Holder for Probes 5-12 mm</u> Order No.: 893-050-000 • <u>1x 3D Measuring-Tripod 130 mm</u> Order No.: 893-200-130 • <u>1x 3D Measuring-Tripod 200 mm</u> Order No.: 893-200-200
SKID-M, 6U Board Tester, (240 x 160 mm) Order No.: 893-500-010	 -55°C to +155°C	<ul style="list-style-type: none"> • <u>1x Frame SKID-M, 6U Board Tester</u> Order No.: 893-500-010 • <u>1x Single Head Wrench SW 7mm</u> Order No.: 893-000-SW7 • <u>1x Allen Wrench 2.5 mm</u> Order No.: 893-000-I25 • <u>1x Skid Vertical Adapter Kit</u> Order No.: 893-291-501 • <u>4x Stilt SKID 2cm</u> Order No.: 016-291-503 • <u>4x Stilt SKID 9cm</u> 	SKID-M Starter Kit, 6U Board Tester, (240 x 160 mm) Order No.: 893-600-START	 0°C to +50°C	<ul style="list-style-type: none"> • <u>1x SKID-M, 6U Board Tester</u> Order No.: 893-600-START • <u>1x Single Head Wrench SW 7mm</u> Order No.: 893-000-SW7 • <u>1x Allen Wrench 2.5 mm</u> Order No.: 893-000-I25 • <u>1x Skid Vertical Adapter Kit</u> Order No.: 893-291-501 • <u>4x Skid Vertical 2cm</u> Order No.: 016-291-503 • <u>4x Skid Vertical 9cm</u> • <u>1x Uniholder</u> Order No.: 893-090-000 • <u>1x Holder for Probes 5-12 mm</u> Order No.: 893-050-000 • <u>2x 3D Measuring-Tripod 200 mm</u> Order No.: 893-200-200
SKID-L, Board Tester, (340 x 300mm) Order No.: 893-500-020	 -55°C to +155°C	<ul style="list-style-type: none"> • <u>1x Frame SKID-L, Board Tester</u> Order No.: 893-500-020 • <u>1x Single Head Wrench SW 7mm</u> Order No.: 893-000-SW7 • <u>1x Allen Wrench 2.5 mm</u> Order No.: 893-000-I25 • <u>1x Skid Vertical Adapter Kit</u> Order No.: 893-291-501 • <u>4x Stilt SKID 2cm</u> Order No.: 016-291-503 • <u>4x Stilt SKID 18cm</u> 	SKID-L Starter Kit, Board Tester, (340 x 300 mm) Order No.: 893-700-START	 0°C to +50°C	<ul style="list-style-type: none"> • <u>1x SKID-L, Board Tester</u> Order No.: 893-700-START • <u>1x Single Head Wrench SW 7mm</u> Order No.: 893-000-SW7 • <u>1x Allen Wrench 2.5 mm</u> Order No.: 893-000-I25 • <u>1x Skid Vertical Adapter Kit</u> Order No.: 893-291-501 • <u>4x Stilt SKID 2cm</u> Order No.: 016-291-503 • <u>4x Stilt SKID 18cm</u> • <u>1x Uniholder</u> Order No.: 893-090-000 • <u>1x Holder for Probes 5-12 mm</u> Order No.: 893-050-000 • <u>2x 3D Measuring-Tripod 200 mm</u> Order No.: 893-200-200

Ordering Information: SKID® Accessories

The operating temperature range is -55°C to +155°C, if not otherwise indicated below. Always ensure non-condensing humidity.

Order No.	Item	Order No.	Item
893-000-MI6	Camera Adapter 1/4" to M6 (SW 13 mm) 	893-291-501	Skid Vertical Adapter Kit 
893-000-SW7	Single Head Wrench SW 7mm 	016-292-500	Rubber Pad SKID 
893-000-I25	Allen Wrench 2.5 mm 	016-292-501	PCBA Spacer SKID PTFE 
893-050-000	Holder for Probes 5-12 mm 0°C to +50°C 	016-292-502	Teflon Slider 
893-090-000	Universal Probe Holder 	893-010-000	Twinaadapter to 2xM6 Ball End 0°C to +50°C 
893-200-130	3D Measuring-Tripod 130 mm / M6 0°C to +50°C 	016-291-503	Stilt SKID 20 mm 
893-200-13V	3D Measuring-Tripod 130 mm / M6 V2A 	016-291-506	Positioning Rail SKID-S 
893-200-200	3D Measuring-Tripod 200 mm / M6 0°C to +50°C 	016-291-505	Positioning Rail SKID-M 
893-200-20V	3D Measuring-Tripod 200 mm / M6 V2A 	016-291-507	Positioning Rail SKID-L 



3D Positioners

Overview

0 °C to +50 °C



- Hands-Free Testing
- 3D Stepless Clamping System
- Accurate and Safe Positioning
- Fixing with one hand
- 0 °C to +50 °C, non-condensing humidity

Stepless Adjustable

The PMK 3D Positioners are stepless adjustable. The mechanical clamping system allows easy and exact positioning of probes and other accessories. The three joints of the stand can be fixed and released by a single rotation of the central clamping handle. Thus the 3D measuring stands offer highest operating comfort and allow effective and economical working.

Permanent Fixation - Stable Base

Due to the exact fit of the ball joints a high static friction is achieved, which gives the 3D measuring stand the desired stability. The three different model variants can be optimally integrated into your working environment: Steelbase, table clamp and vacuum base offer a stable basis for your daily measuring tasks, depending on the application. Please note that other combinations of base, positioner and probe holder are available at our distribution. This is only a selection of the available models.

For long-term fixation of complex measurement setups or as work simplification in PCB development, we recommend SKID®, compatible with the positioners on this page.

Assembled within Seconds

The 3D Positioning System consists of three parts:

Base, positioner and probe holder. It is assembled within seconds using the 7mm wrench enclosed in the scope of delivery.

Accurate and Safe

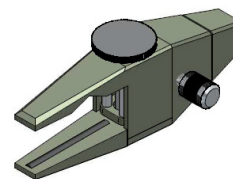
All PMK Probe positioning systems are ideal for semipermanent measurements. The setup is fast and easy offering greatest flexibility for your every day measuring- tasks.

Universal Usage

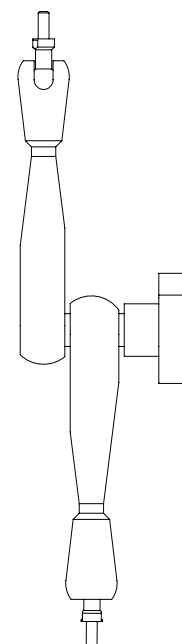
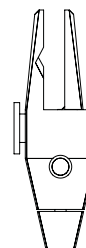
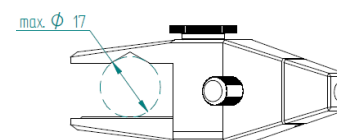
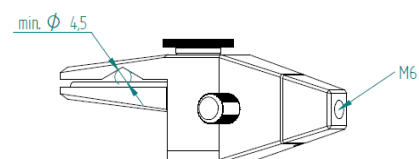
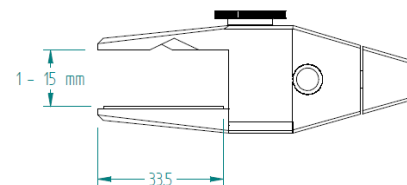
The PMK 3D Positioning System can be altered to fit different test applications. The customer may choose from four different Bases: Steel Base, Table clamp magnetic foot and vacuum cup as well as different arm lengths of 130 mm and 200 mm. The Probe-Holders are interchangeable too.

You may choose between the 3-Fold-Holder or Uniholder, which is not only capable of holding any 2.5 mm and 5.0 mm standard probes, but almost any measuring device up to a clamping width of 17 mm. Twinholder is designed to hold 4 mm Bananaplugs and similar measuring leads.









Dimensions Uniholder



Order-No.: 893-090-000

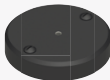








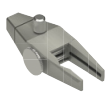






Ordering Information: 3D Positioners

	MSA 100, 3D Measuring Tripod with Steelbase, 200 mm Span Width	MSA 130, 3D Measuring Tripod with Steelbase, 130 mm Span Width	MSB 40, 3D Measuring Tripod with Tableclamp, 200 mm Span Width	MSC 85, 3D Measuring Tripod with Vacuumbase, 200 mm Span Width
Order-Number	0 °C to +50 °C  893-350-001	0 °C to +50 °C  893-350-008	0 °C to +50 °C  893-350-002	0 °C to +50 °C  893-350-003
	MSU 1500, 3D Measuring Tripod with Steelbase, 200 mm Span Width bothsided M6 incl. Uniholder	MSM 130, 3D Measuring Tripod with Magnetfoot, 130 mm Span Width	MSM 200, 3D Measuring Tripod with Magnetfoot 200 mm Span Width	MST 200, 3D Measuring Tripod with Steelbase, 200 Span Width bothsided M6 incl. Twinholder
Order-Number	0 °C to +50 °C  893-350-006	0 °C to +50 °C  893-350-004	0 °C to +50 °C  893-350-005	0 °C to +50 °C  893-350-010

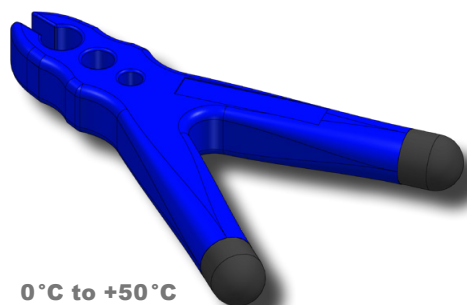
Ordering Information: 3D Positioner Accessories

The temperature range is 0 °C to +50 °C, unless otherwise indicated.
Always ensure non-condensing humidity.

Order No.	Item		Order No.	Item	
Base Options					
893-100-001	Steelbase M6 1200 g D= 100 mm		893-100-003	Vacuumbase M8 D= 85 mm	
893-100-002	Table Clamp M6 up to 40 mm		893-100-004	Magneticfoot 170N M6 D= 30 mm	
			893-100-005	Magneticfoot 300N M8 D=30 mm	
Tripod Options					
893-200-130	3D Measuring Tripod 130 mm / M6		893-200-200	3D Measuring Tripod 200 mm / M6	
893-200-13V	3D Measuring-Tripod 130 mm / M6 V2A -55°C to +155°C		893-200-20V	3D Measuring Tripod 200 mm / M6 V2A -55°C to +155°C	
Clamping Options					
893-050-000	3D Measuring Tripod 130 mm / M6		893-010-000	Twinadapter Accepting two M6 Threads	
893-090-000	Universal Probe Holder -55°C to +155°C		893-100-004	Twinholder Accessing two 4 mm Bananaplugs	
Adapter					
893-100-003	Hex Wrench AF7 -55°C to +155°C		893-000-MI6	Camera Adapter 1/4“ to M6 (SW 13mm) -55°C to +155°C	
	Thread Adapter				



2-Footer Positioner



Key Features:

- Handsfree Testing
- Anti-slip Seating

Order-No.: 893-250-001

Technical Data:

Weight: 51.5g

Materials: ABS, stainless steel

Finish: ABS

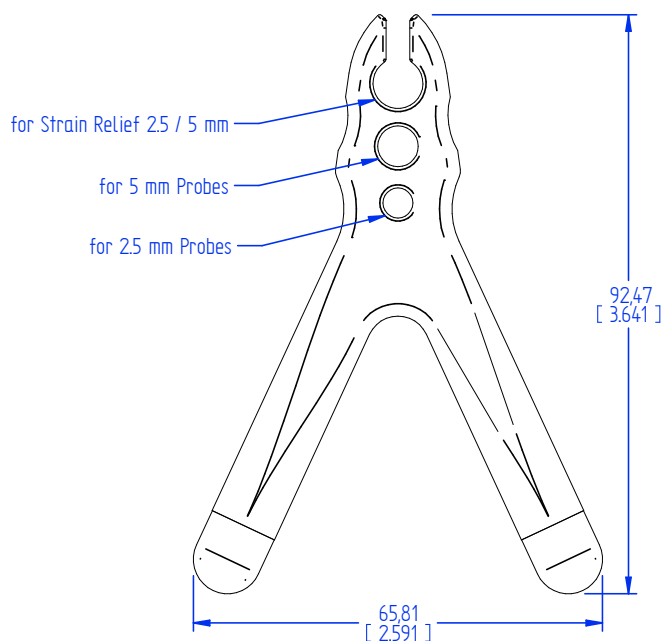
Seating: TPE

The PMK 2-Footer Positioner is a positioner for all PMK 2.5mm and 5mm probes.

Also nearly all probes of other manufacturers can be arranged with this 2-Footer Positioner.

The 2-Footer Positioner has three different sized apertures into which the probes can be put, depending on their size.

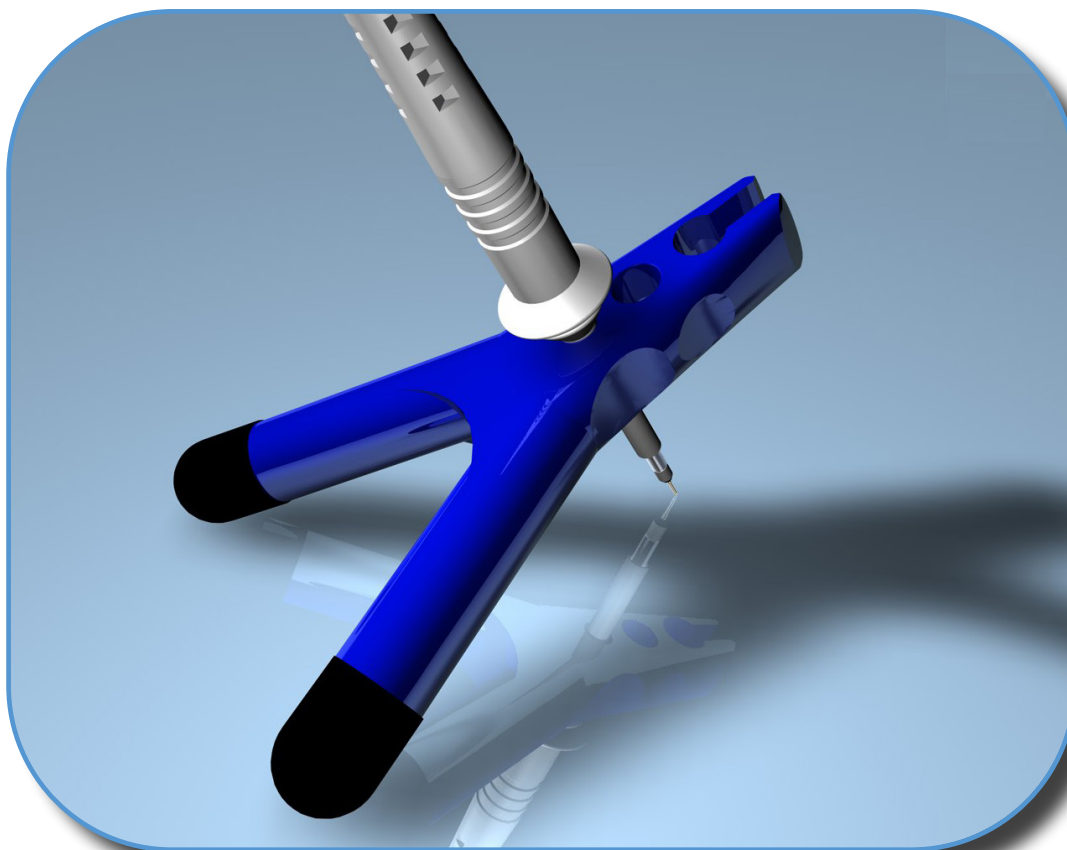
The top aperture is conical and thus ideally suitable to clamp probes at the spout. Operating temperature range is 0°C to +50°C with non-condensing humidity.

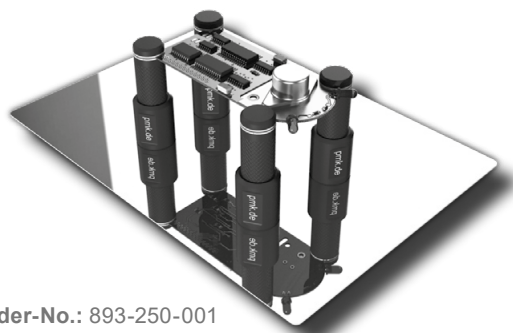


This product comes with 2 years warranty.

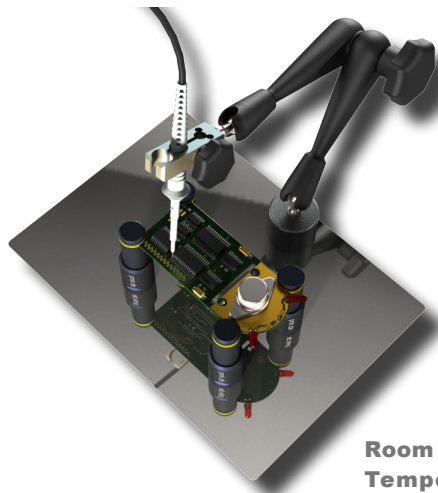
Using

In order to align the probe with the positionierer, the probe has to be insert into the suitable aperture of the 2-Footer Positioner and then it can be arranged at the measuring point. It has to be noted that the front side of the 2-Footer Positioner is above when positioning the probe.

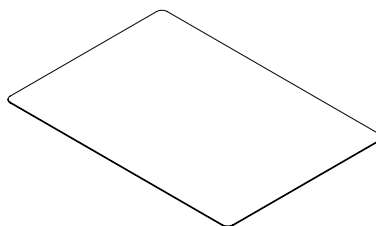




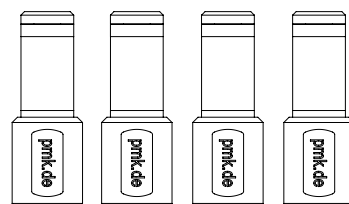
Order-No.: 893-250-001

**Room
Temperature
only****Scope of Delivery**

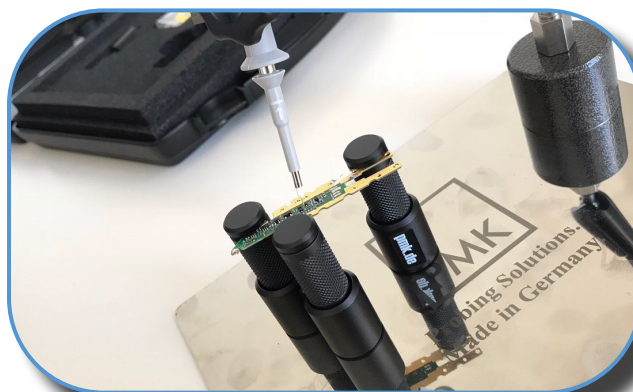
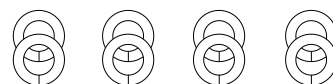
1x stainless steel base plate



4x holder



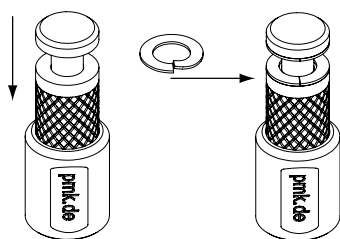
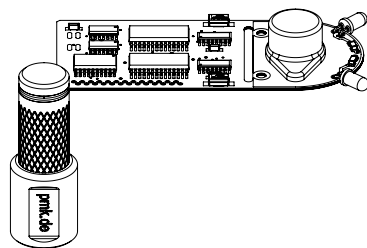
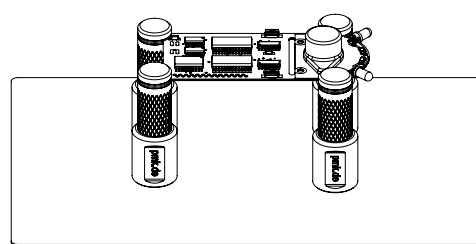
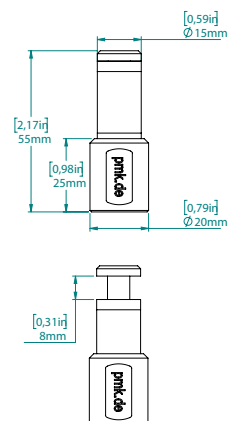
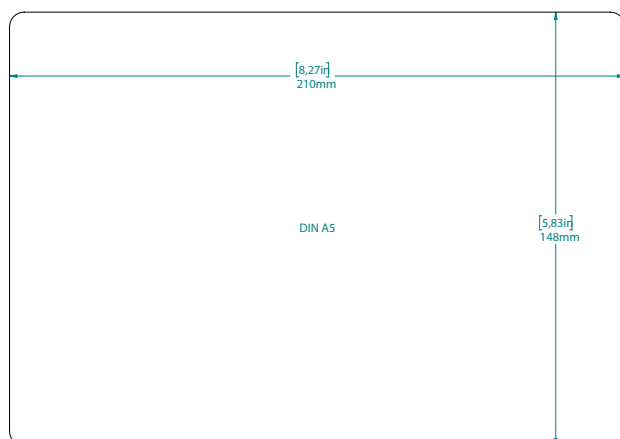
8x self-adhesive insulating washers



This product comes with 2 years warranty.

How to use the SKID`eco

1. Place the 4 magnetic holders with assembled washers onto the base plate.
2. Press the sleeve of the first holder downwards, place your PCB between the washers and release the sleeve to fix the PCB (picture 2).
3. Repeat step 2 to fix necessarily points of your PCB with the remaining holders (picture 3).

Picture 1:**Picture 2:****Picture 3:****Dimensions**

Manufacturer

PMK Mess- und Kommunikationstechnik GmbH
Koenigsteinerstrasse 98
65812 Bad Soden am Taunus, Germany

Phone: +49 (0) 6196 999 - 5000

Internet: www.pmk.de
E-Mail: sales@pmk.de

Copyright © 2023 PMK - All rights reserved.

Information in this publication supersedes that in all previously published material.
Specifications are subject to change without notice.

