

OSICS SLD

BROADBAND LIGHT SOURCE

- Broadband light sources featuring superluminescent light-emitting diodes (SLD or SLED), a broad spectral range, high output power and excellent power stability.

KEY FEATURES

High output power

Excellent power stability

Isolator feature

Broad wavelength range



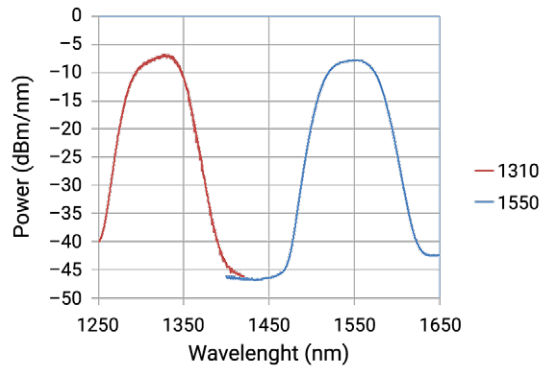
KEY FEATURES

High output power: 10 dBm

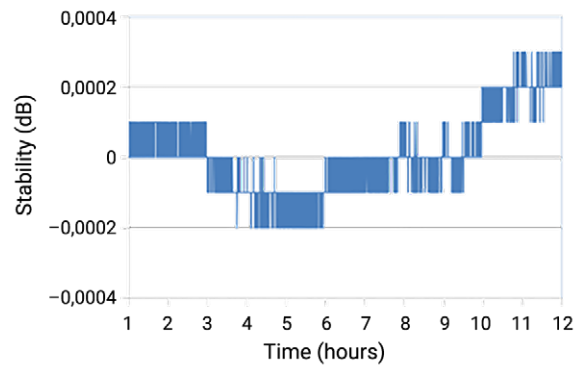
Excellent power stability: The module's monitoring photodiode provides power for real-time feedback, delivering extremely stable output power. This eliminates the need for frequent referencing during component testing.

Isolation: The module features an isolator to maintain power stability even in the presence of back reflections from a test setup.

Broad wavelength range: ~150 nm range with a spectral power density higher than -40 dBm/nm.



Optical spectrum



Power stability over 12 hours

SPECIFICATIONS

		OSICS SLD 1300	OSICS SLD 1550
Central wavelength (nm) ^{a, b}		1320	1540
Spectral width ^c	-3 dB (FWHM)		50 nm
	-10 dB		80 nm
	-20 dB		100 nm
	-30 dB		125 nm
Output power (mW)	High		10
	Low		5
Power stability over temperature range (dB) ^d			±0.1
Power stability at constant temperature (dB)			±0.01
Optical fiber			SMF
Optical interface			FC/APC connector

a. Typical.

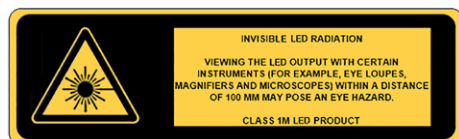
b. ±20 nm.

c. Guaranteed at output power = 10 mW.

d. Operating temperature range 15 °C to 35 °C.



LASER SAFETY



ORDERING INFORMATION

OS-SLD-XX-58

Central wavelength

1300 = 1320 nm

1550 = 1540 nm

Connector

58 = FC/APC

Example: OS-SLD-1300-58

EXFO headquarters T +1 418 683-0211 **Toll-free** +1 800 663-3936 (USA and Canada)

EXFO serves over 2000 customers in more than 100 countries. To find your local office contact details, please go to www.EXFO.com/contact.

For the most recent patent marking information, please visit www.EXFO.com/patent. EXFO is certified ISO 9001 and attests to the quality of these products. EXFO has made every effort to ensure that the information contained in this specification sheet is accurate. However, we accept no responsibility for any errors or omissions, and we reserve the right to modify design, characteristics and products at any time without obligation. Units of measurement in this document conform to SI standards and practices. In addition, all of EXFO's manufactured products are compliant with the European Union's WEEE directive. For more information, please visit www.EXFO.com/recycle. **Contact EXFO for prices and availability or to obtain the phone number of your local EXFO distributor.**

For the most recent version of this spec sheet, please go to www.EXFO.com/specs.



ES France - Département Tests & Mesures
127 rue de Buzenval BP 26 - 92380 Garches



Tél. 01 47 95 99 45
Fax. 01 47 01 16 22



e-mail : tem@es-france.com
Site Web : www.es-france.com