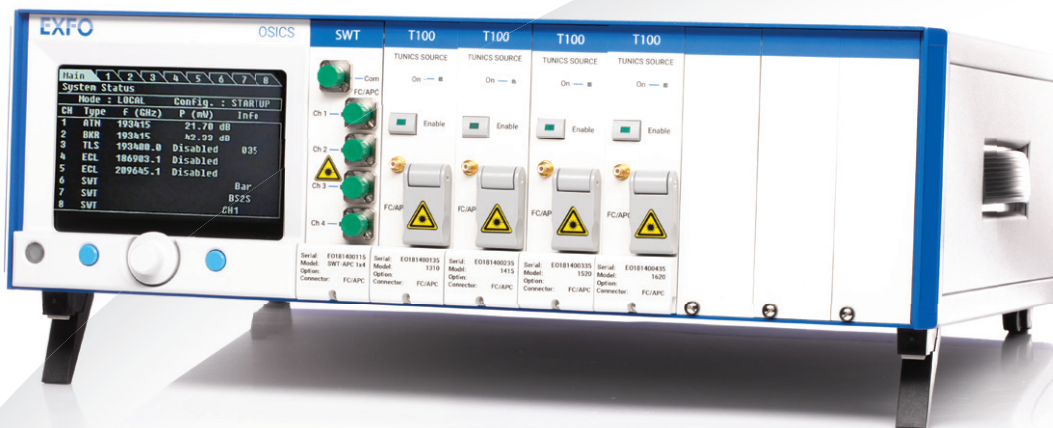


OSICS multifunction platform

MODULAR OPTICAL TEST PLATFORM



Easy-to-use, cost effective optical test platform that is ideal for labs and 24/7 testing in manufacturing plants.

KEY FEATURES

Cost-effective multifunction modular platform

Hosts up to 8 modules

Large choice of pluggable light sources or passive optical modules

Complete remote control including GPIB

SPEC SHEET

The OSICS multifunction modular platform features a large suite of pluggable light sources and passive optical modules, integrated into a cost-effective, reliable and flexible solution. The OSICS family of modules fulfill all fiber-optic component and system test requirements for R&D labs as well as 24/7 manufacturing environments, particularly for DWDM system evaluation.

The OSICS Mainframe can host up to eight pluggable modules that can be mixed and matched for custom applications and controlled remotely and individually for easy automation.

FRONT PANEL

The front panel interface of the mainframe features a display and rotary knob for easy navigation between module tabs and fast setup and control of the parameter values. During normal operation, all module parameters are displayed simultaneously in the main tab and updated in real time.



REAR PANEL

Connectors for remote operation are located on the back panel of the mainframe: USB-B for RS 232 communication, GPIB for IEEE 488 communication and SubD-9 for interlock.

There are also 18 BNC connectors for synchronization of the mainframe and application of an external modulation signal to the mainframe.

In addition, there are two BNC connectors per module: one for monitoring of power, current, and temperature and the other for an analog modulation output signal. These only operate if supported by the module.



COMPATIBLE OPTICAL MODULES

COMPACT TUNABLE LASER

OSICS T100

Ultra-low SSE tunable external cavity laser. Ideal optical source for stepped component testing



SWITCHES & SHUTTERS

OSICS SWT

Ultra-low SSE tunable external cavity laser. Ideal optical source for stepped component testing



BROADBAND SOURCE

OSICS SLD

Superluminescent light emitting diodes for broadband spectral measurements



COMPACT TRANSMISSION LASERS

OSICS DFB

Distributed feedback laser diodes for CWDM, DWDM and LANWDM



ATTENUATORS & BACKREFLECTORS

OSICS ATN-HP

High power optical attenuators for testing WDM signal



OSICS BKR

Variable back reflectors for simulation of cumulated reflections



GENERAL SPECIFICATIONS

Number of slots	8
Supported pluggable modules	All OSICS modules in any combination
Electrical specifications	
Power supply	100-240 V AC
Power supply frequency	50-60 Hz
Maximum input current	5 A rms
Interfaces	
Control panel	5.5 inch screen, ON/OFF and control buttons
Remote control	GPIB (IEEE 488) and USB-B communication
Analog monitoring	Multi-purpose BNC output for current, power or temperature monitoring of each pluggable module
Modulation	Input: <ul style="list-style-type: none"> • External TTL modulation (mod. in BNC connector) • Internal TTL modulation (on-board oscillator) Output: Synchro BNC connector
Physical specifications	
Dimensions (W x D x H)	448 mm x 145 mm x 387 mm (17 5/8 in x 5 3/4 in x 15 1/4 in)
Weight (without battery)	7.2 kg (15.9 lb)
Available versions	Benchtop/rackmount

ORDERING INFORMATION**OSICS-8-XX****Rackmount**

00 = Without rackmount handles
H = With rackmount handles

Example: OSICS-8-H

EXFO headquarters T +1 418 683-0211 **Toll-free** +1 800 663-3936 (USA and Canada)

EXFO serves over 2000 customers in more than 100 countries. To find your local office contact details, please go to www.EXFO.com/contact.

For the most recent patent marking information, please visit www.EXFO.com/patent. EXFO is certified ISO 9001 and attests to the quality of these products. EXFO has made every effort to ensure that the information contained in this specification sheet is accurate. However, we accept no responsibility for any errors or omissions, and we reserve the right to modify design, characteristics and products at any time without obligation. Units of measurement in this document conform to SI standards and practices. In addition, all of EXFO's manufactured products are compliant with the European Union's WEEE directive. For more information, please visit www.EXFO.com/recycle. **Contact EXFO for prices and availability or to obtain the phone number of your local EXFO distributor.**

For the most recent version of this spec sheet, please go to www.EXFO.com/specs.

In case of discrepancy, the web version takes precedence over any printed literature.



ES France - Département Tests & Mesures
127 rue de Buzenval BP 26 - 92380 Garches



Tél. 01 47 95 99 45
Fax. 01 47 01 16 22



e-mail : tem@es-france.com
Site Web : www.es-france.com