



Made in the USA.

BTDC™

BITRODE DIGITAL CYCLER™

Bitrode Digital Cycler™ (BTDC™) is the ultimate battery testing solution, designed specifically for high-capacity cells, with exceptional performance specifications and regenerative capabilities.

Key Features

- Up to 28 channels of 300 A continuous current
- Data acquisition rate of 1 ms
- Rise time (current): <0.7ms
- Voltage accuracy: 0.015% of full scale (FS)
- Current accuracy: 0.02% of full scale (FS)
- Regenerative
- Max current per module: 1200 A
- Available voltage ranges: -6 to +6 volts
- High (single bay) circuit density
- Available max current rates: 100 / 300 / 600 A
- Voltage control resolution: 0.1 mV
- Circuit-circuit isolation
- Slew rate (current): less than 1 ms (-90 to +90%)
- 100% duty cycle at max power

BTDC™ Configurations

	No. of Channels	Max Current	Max Voltage	Current Resolution
Configuration 1	4	300/30 A (450 A*)	-6 to +6 V	5mA
Configuration 2	2	600/60 A (900 A*)	-6 to +6 V	10mA
Configuration 3	4	100/10 A (150 A*)	-6 to +6 V	2mA

*150% Pulsing for up to 30 seconds can be added as an option.

Up to 7 modules of different configurations can be combined in the same cabinet (up to 3 in small cabinet).

HMI can be added if needed for the application.

Second current range for increased control and measurement accuracy.

BITRODE HEADQUARTERS

9787 Green Park Industrial Drive
St. Louis, Missouri 63123 - USA

t +1 636 343-6112

f +1 636 343-7473



ES France - Département Puissance Energie
127 rue de Buzenval BP 26 - 92380 Garches



Tél. 01 47 95 99 45
Fax. 01 47 01 16 22



e-mail : tem@es-france.com
Site Web : www.es-france.com

Height 189 cm/78"
Width 61 cm/24"
Depth 122 ccm/48"

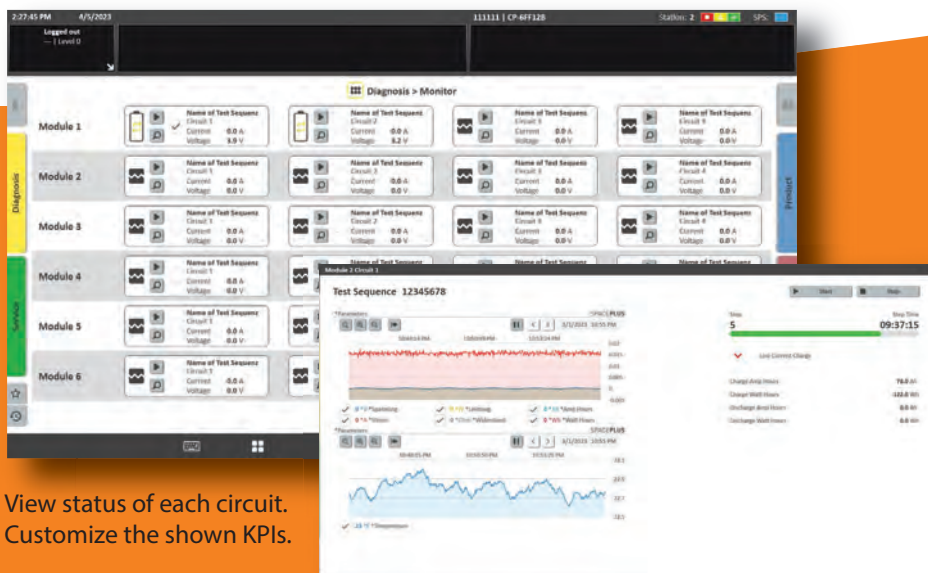


Height 107 cm/42"
Width 61 cm/24"
Depth 122 ccm/48"



HMI touchscreen

- Uses Schuler architecture
- Choose from standard tests
- Define recipe steps
- View status of each circuit
- Customize the shown KPIs
- Graph the results of a circuit



View status of each circuit.
Customize the shown KPIs.

Additional Features

- In-depth diagnostic capability
- CE (UL, CSA upon request)
- Open communication architecture customizable as needed to connect to:
 - Existing automation infrastructure
 - External and third-party I/O modules
 - Environmental chambers
 - Third-party software

SCAN



HERE

Graph the results of a circuit.

BITRODE HEADQUARTERS

9787 Green Park Industrial Drive
St. Louis, Missouri 63123 - USA
t +1 636 343-6112
f +1 636 343-7473

www.bitrode.com/btdc



ES France - Département Puissance Energie
127 rue de Buzenval BP 26 - 92380 Garches



Tél. 01 47 95 99 45
Fax. 01 47 01 16 22



e-mail : tem@es-france.com
Site Web : www.es-france.com