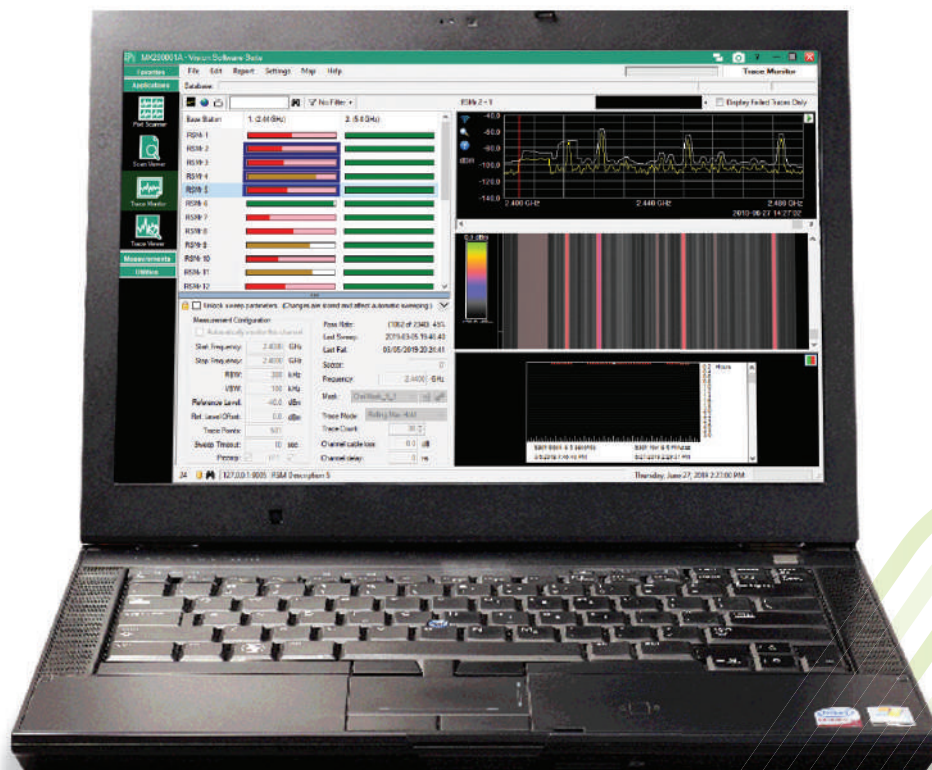


**Anritsu** Advancing beyond

# Vision™

Remote Spectrum Monitor Software

MX280001A



## Introduction

Spectrum monitoring systems facilitate the identification and removal of interference signals that degrade network capacity. By monitoring spectrum on a continual basis, problem signals can be identified as they occur in real time. Patterns of unwanted signal activity can also be examined, providing an efficient way to characterize and locate the source of the interference problem.

In addition to interference detection, spectrum monitoring is also used to characterize spectrum occupancy. Government regulators and operators are often interested in determining the usage rate for various frequency bands. Monitoring these frequencies provides the information needed to optimize spectrum for maximum utilization. Spectrum can be re-purposed for other applications or multiplexed with other signals using cognitive radio techniques.

Spectrum monitoring also serves to enforce compliance with government regulations. Police, fire fighters, air traffic control, military, and emergency services must all have access to communications free of impediments and distortion. Compliance with spectrum regulations is often enforced by spectrum monitoring. Figure 1 shows spectrum monitors surrounding a prison facility looking for illegal transmissions.

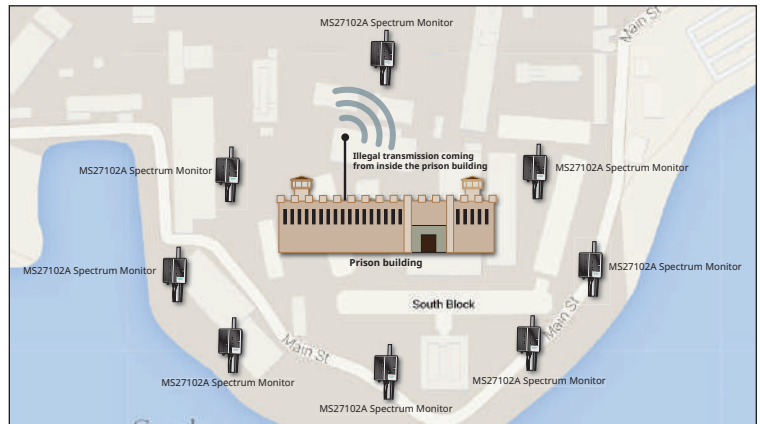
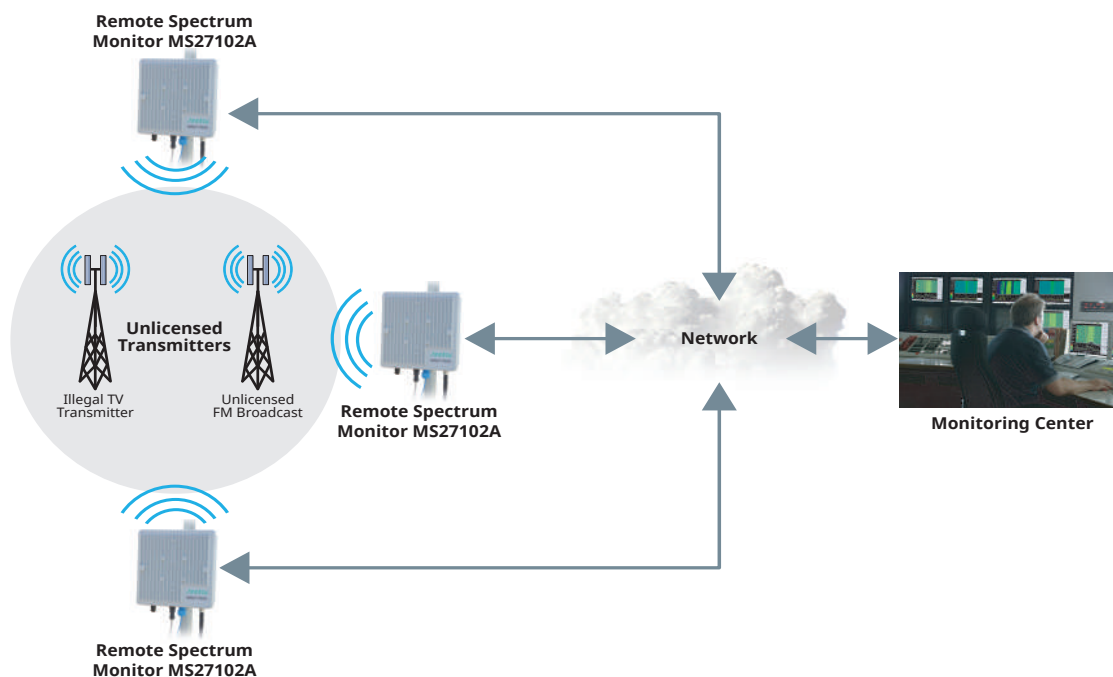


Figure 1. Monitoring for Illegal Transmissions from Prison Facility

## Vision MX280001A Software Overview

The Vision MX280001A software platform works with Anritsu's spectrum monitoring hardware to automate the process of collecting measurement data, as well as providing useful information about network health and use of the spectrum. Using multiple hardware probes covering a wide geographical area, Vision software presents a comprehensive picture of spectral activity to assist users in monitoring the spectrum for unusual activity. Figure 2 shows a typical signal monitoring system with Anritsu Remote Spectrum Monitor MS27102A positioned for maximum coverage.



## MX280001A Vision Software

Vision software facilitates a variety of applications used for spectrum monitoring systems. One important application includes determining the presence of interferers in a network that can degrade communication services. Cellular operators in particular are vulnerable to such interference that manifests itself in slower data rates and dropped calls. In most cases, network performance is compromised on the uplink frequency bands (communication from the mobile unit to the base station). However, network quality of service can also be impacted by interference on the downlink channels. This type of interference can be prevalent at the cell periphery where the power levels of the interference signals approximate those transmitted by the base station itself.

Another important application for Vision software is the detection of illegal or unlicensed broadcast signals. Illegal broadcasters may set up AM/FM, cellular, or other types of transmissions that must be identified and ultimately located. By using spectrum monitors, unlicensed broadcasts can be tracked, processed, and stored in a database for further examination and potential use in legal proceedings.

### Other applications include the following:

- Inform spectrum policy – accumulate historical spectrum data to determine percent time of occupancy
- Monitor secure environments
- Monitor borders, airports, nuclear facilities, and other sensitive areas
- Railroads – monitor spectrum for potential interference of positive train control (PTC) signals
- Satellite reception interference detection
- Interference monitoring at large venues such as stadiums, malls, etc.
- White space monitoring
- Indoor monitoring (board rooms, embassies, and other sensitive facilities). See Figure 5.



Figure 3. Stadium Monitoring



Figure 4. Airport Frequency Monitoring



Figure 5. Indoor Transmissions Detection

## Vision Software – How it Works

Vision software is an optional program that runs on a PC using the Microsoft Windows 64 bit operating system. This software provides control and automation capabilities when used with Anritsu’s Remote Spectrum Monitor hardware. Vision software is divided into two major categories: Trace Monitor and Vision Locate. Additionally, High Speed Port Scanner, Spectral Occupancy, and Cross Pol measurements provide functionalities to identify unusual signal activity and mitigate interference problems.

## Vision Monitor

The Vision Monitor program is the visible user interface for monitoring remote spectrum activity. It provides a listing of all hardware monitors in the system along with a graphic overview of system health. A screenshot of the main user interface for Vision Monitor is shown in Figure 6.

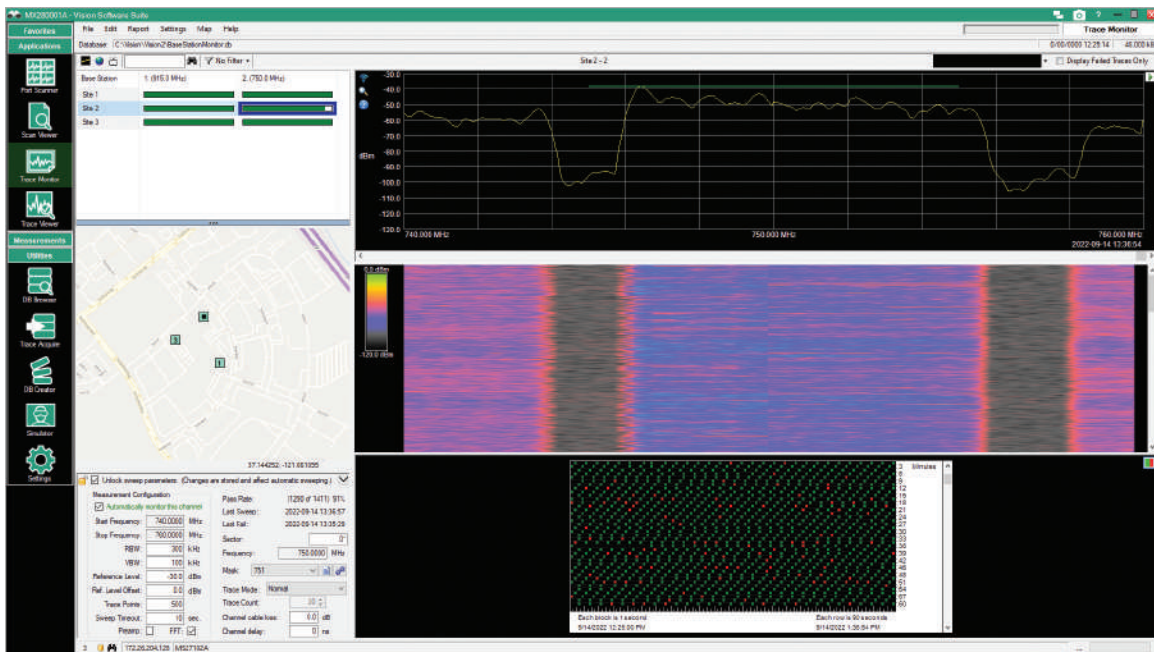


Figure 6. Vision Monitor Screen

Shown here is a listing of the deployed monitors, with the ability to view both “real-time” and historic measurement trace and spectrogram data.

## Vision Acquire

Vision Acquire can be setup to receive email trace-monitoring status notifications and set alarm notifications when a trace fails a set threshold

- Measurement acquisition
- Data storage
- Threshold setting/alarm generation
- Reporting

Users can set up the Vision Monitor program to take automatic measurements for all spectrum monitors. The measurements are in turn uploaded into a database for further review. The database is updated with new data while old information is periodically purged according to user settings. Functions are also available for archiving, copying, and compressing the database. See Figure 7 for illustration.

## MX280001A Vision Software

With Vision Monitor, users can set up limit line masks for triggering alarms through the Vision Acquire menu, view spectrum history, and change measurement parameters of individual or groups of spectrum monitor probes. The program makes heavy use of intuitive graphics to indicate the presence of interference or other signals of interest. Additionally, searches both in real time and over history can be made to indicate patterns of interference. In some cases, interference may only occur at certain times of the day or certain days of the week. It is important to be able to capture the signal, identify the pattern, and subsequently hunt for the signal location at the appropriate times. In addition to trace data, spectrograms can be viewed to indicate changes in frequency over time for suspicious signals.

For each remote monitor, Vision Monitor collects data from as many as 24 input RF ports. This can be ideal for cellular systems with multiple sectors and multiple frequencies per sector. Figure 8 shows a screen shot of the user interface with multiple monitors overlaid on a map. Using this map, alarm threshold violations can be easily seen with color changes on the probe indicating a frequency threshold violation at that site. If needed, automated email alerts can be sent to any email address provided through Vision Acquire. These alerts can be emailed in real time or sent as summary reports on a daily or weekly basis. These reports are a great tool for provide a snap shot of the network's health and provide time-stamped indications of when a suspicious signal might be present.

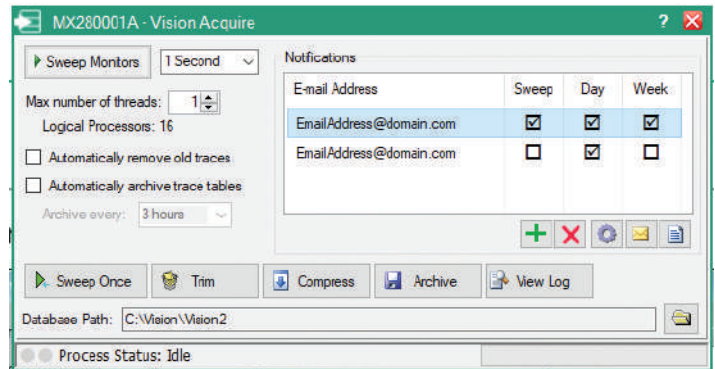


Figure 7. Vision Monitor Measurement and Database Control

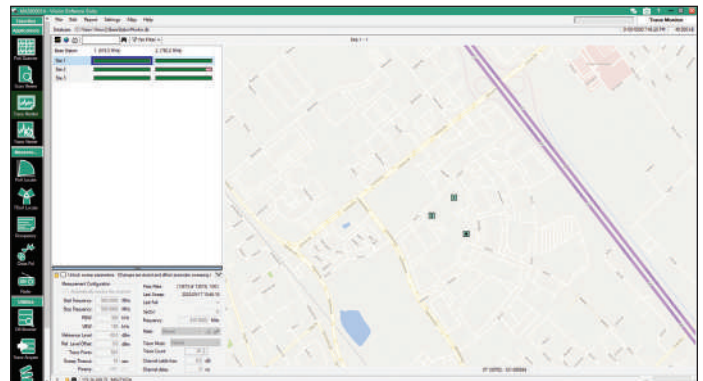


Figure 8. Monitor Positions Overlaid on Map



## Vision Locate with POA (Option 401)

Vision TDoA Locate with POA is an optional measurement used with Vision Monitor (not supported on MS2070A/MS2080A). Once an interferer or suspected illegal signal is identified, a geo-location algorithm is employed to fix the approximate position of the signal. This enables the user to narrow down the signal location, minimizing the time and expense for pin-pointing its position. A sample map is shown in Figure 9 showing the suspected interference position using Power of Arrival (POA). In this window, the probe locations are indicated by the numbered squares. The interference position is identified by the concentric circles.

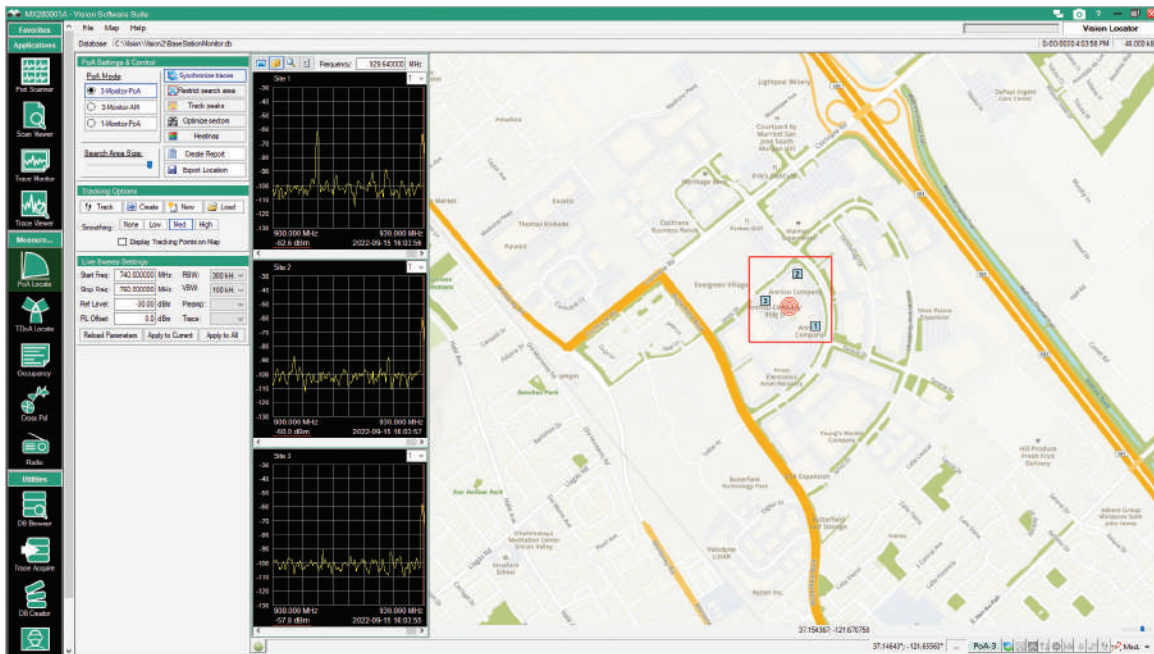


Figure 9. Geo-Location of Signal on Map Overlay

For interference that may have occurred in the past, users can also use historical data for positioning the signal of interest when POA geo-location is used. A search can be done for alarm violations that occurred at any of the spectrum monitor probes in the network. Using three probes in the vicinity, the interference position can be geo-located.

Three types of geo-positioning algorithms can be used to locate signals of interest. The POA algorithm is used to position the interference signal when low bandwidth or non-modulated transmission are to be located. A second positioning technique is available called Time Difference of Arrival (TDOA). TDOA uses the time that a given signal arrives at each receiver. Based on the time differences measured, a calculation is made for the interference position. In general, TDOA offers superior results to POA; however, TDOA cannot be used for CW and other types of non-modulated signals. For each of these types of measurements, POA and TDOA, three or more probes must be in the vicinity to detect the signal of interest in order to correctly triangulate the position.

## High-Speed Port Scanner (Option 407)

The High-Speed Port Scanner scans multiple RF In ports and multiple frequency channels measured with Anritsu Remote Spectrum Monitors. Although the High-Speed Port Scanner works well in scanning individual frequency channels on a given RF In port, this option is uniquely capable of quickly scanning multiple RF inputs on Anritsu's line of remote spectrum monitoring products. The Remote Spectrum Monitor MS27103A (either the standard 12-port or optional 24-port RF In version) in particular is the perfect match for the High-Speed Port Scanner where measurement speed is critical. The High-Speed Port Scanner can also be used with the Remote Spectrum Monitor MS27102A (2-port option) and the Remote Spectrum Monitor MS27100A when equipped with the 4-port switch accessory.

A key feature of the option is its multi-trace viewer (see Figure 10). A large number of traces can be viewed simultaneously in a single display. The number of traces that can be viewed is limited only by the size and resolution of the display monitor used.

Refresh rates for scanning 12 RF IN ports are typically less than one second.

When scanning multiple spectrum monitor units, a multi-threading process is used. This keeps the display refresh rates under one second even when multiple spectrum monitors are used. However, rates seen are dependent on sweep settings (RBW/VBW) in the unit and the network used. A slow network for transmitting the measurements back to the monitor could delay refresh rates in the display. For the traces shown in the display monitor, marker and delta-marker functions are available for the spectrum traces. Each trace display also allows limit lines to be used to indicate alarm situations. Both Upper Limit and Lower Limit lines are available. Lower Limit line are applicable for detecting the absence of signals in a given channel bandwidth. When an alarm situation is present, the screen background is colored red.

To assist users in identifying individual spectrum plots, host names and descriptions can be used. Additionally, individual parameter settings (RBW/VBW, Ref Level, use of preamplifier, etc.) can be selected.

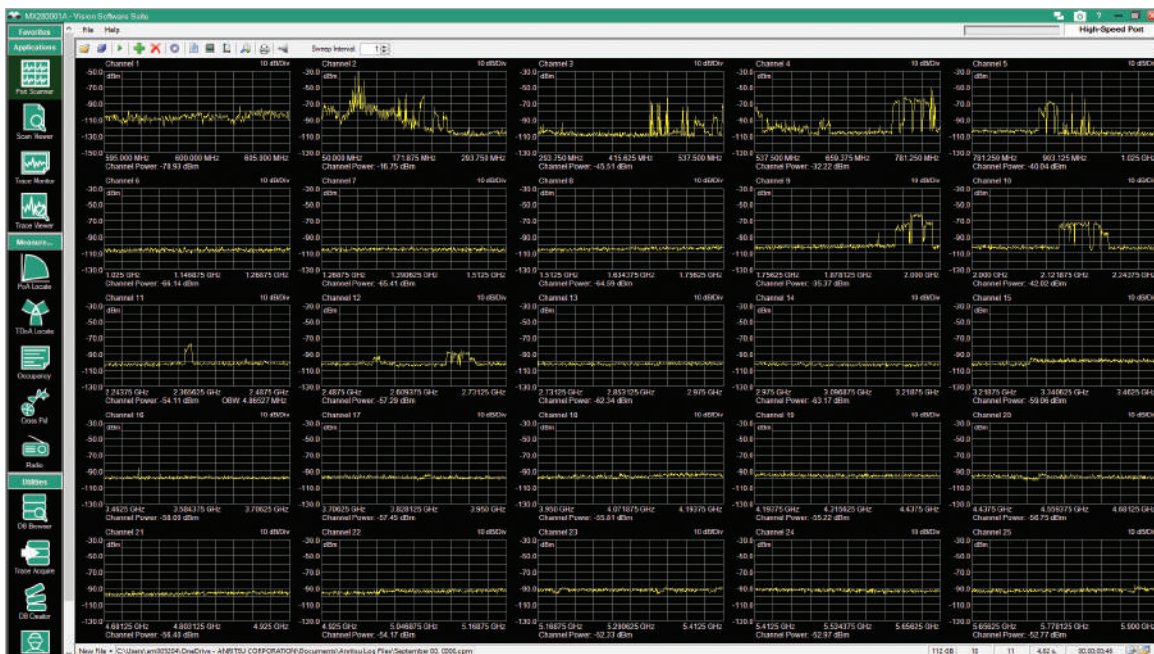


Figure 10. High-Speed Port Scanner Multi-Trace Display

## MX280001A Vision Software

Other features included with the High-Speed Port Scanner are listed below (Figure 11).

- Save-on-Event – users have the option to continuously save all measurements or only the measurements when limit line violations occur
- Save Measurements to File Location – all measurement data can be saved in spreadsheet format (CSV) using either comma, semi-colon, or tab delimiter formats
- GPS Location – a selection is available to save GPS date/time/position coordinates as measurements are scanned. This feature is particularly helpful when measurements are taken in a mobile environment.
- Save Sweep Traces in an output file
- Scan on System Startup – an option exists to begin saving immediately when a PC/laptop is connected to a powered Anritsu Remote Spectrum Monitor
- Reload Configuration Parameters – the last configuration file (channel/port settings, measurement parameters) can be automatically loaded when the application is started
- Set Individual File Sizes – set the maximum file size to be used for measurement storage before a new file is created
- Memory Storage Settings – set the minimum free space allowed before old files are deleted to make room for new measurements
- Channel Power – display channel power on screen

Note that both Channel Power and Occupied Bandwidth are automatically saved in a CSV file.

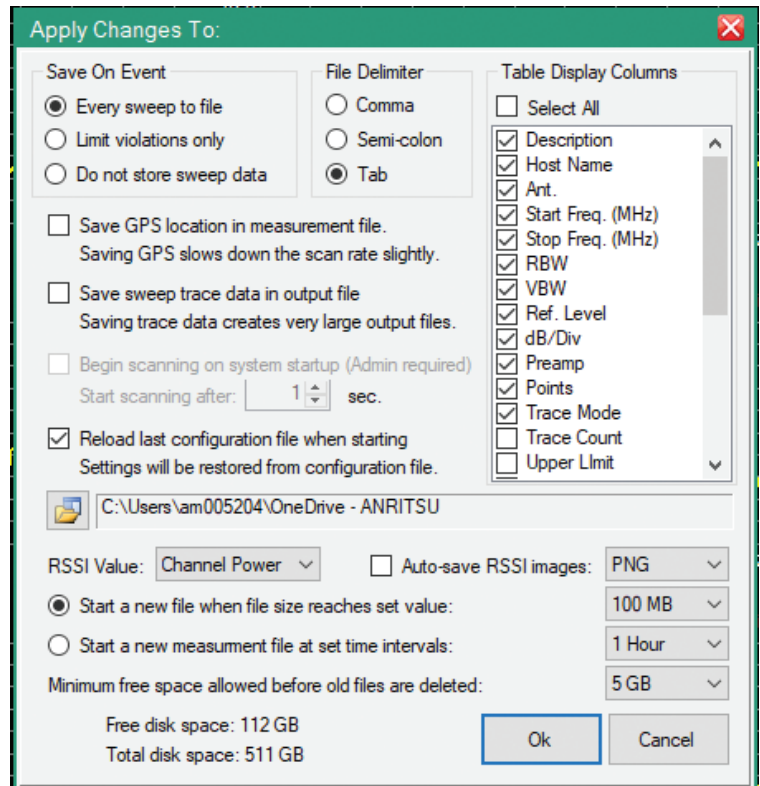


Figure 11. Display Options Available in High-Speed Port Scanner



### Scan Viewer

The Scan Viewer is a free utility included within Vision. Spectrum channel measurements saved as part of the High-Speed Port Scanner option can be viewed with the Scan Viewer. See Figure 12 for the Scan Viewer display.

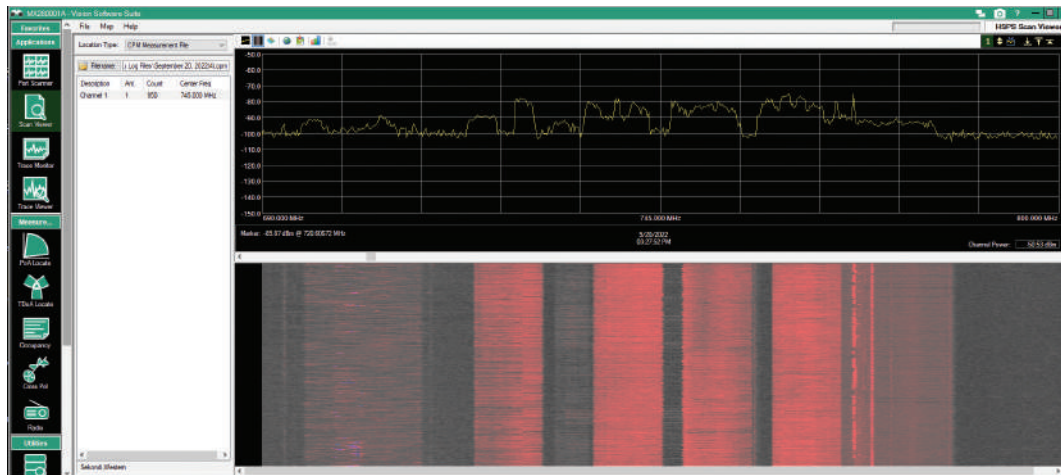


Figure 12. Scan Viewer Utility

A spectrogram is available to display measurements as a function of frequency and time. Channel Power for each trace is displayed at the bottom right-hand corner of the trace display.

Files saved either on a remote PC/laptop, in the spectrum monitor's flash memory, or on a USB stick attached to the monitor can easily be retrieved and displayed on the viewer. In addition, the following display features are available to the user.

- Marker and Delta-Marker functions
- MAX or MIN Hold for all traces accumulated
- Average Trace Display – averages over all traces accumulated and display one average
- All Trace Display – shows all traces taken during a set period for a selected channel
- Video Playback – automatic playback of traces with start, stop, slower, faster, play from beginning and play from current time position features

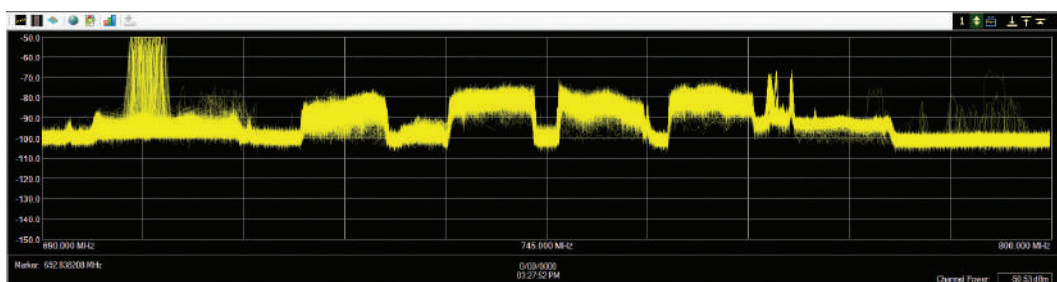


Figure 13. Trace Viewer Display of All Traces Measured.  
Notice Intermittent Signals on the Right-Hand Side of Trace

### Customer Upgrades

Customers wanting to upgrade their Vision software with the High-Speed Port Scanner must load firmware version V2016.11.2 or higher. High-Speed Port Scanner is now included in the Vision installation file but will only work with Anritsu spectrum monitors where a purchase of the High-Speed Port Scanner has been made.

### 3D Spectrogram

Used with the File Viewer available for viewing .RSM or .CSM measurement files, the 3D spectrogram enables user to view measurements as a function of both time and frequency. Figure 14 below shows an example of the 3D spectrogram display.

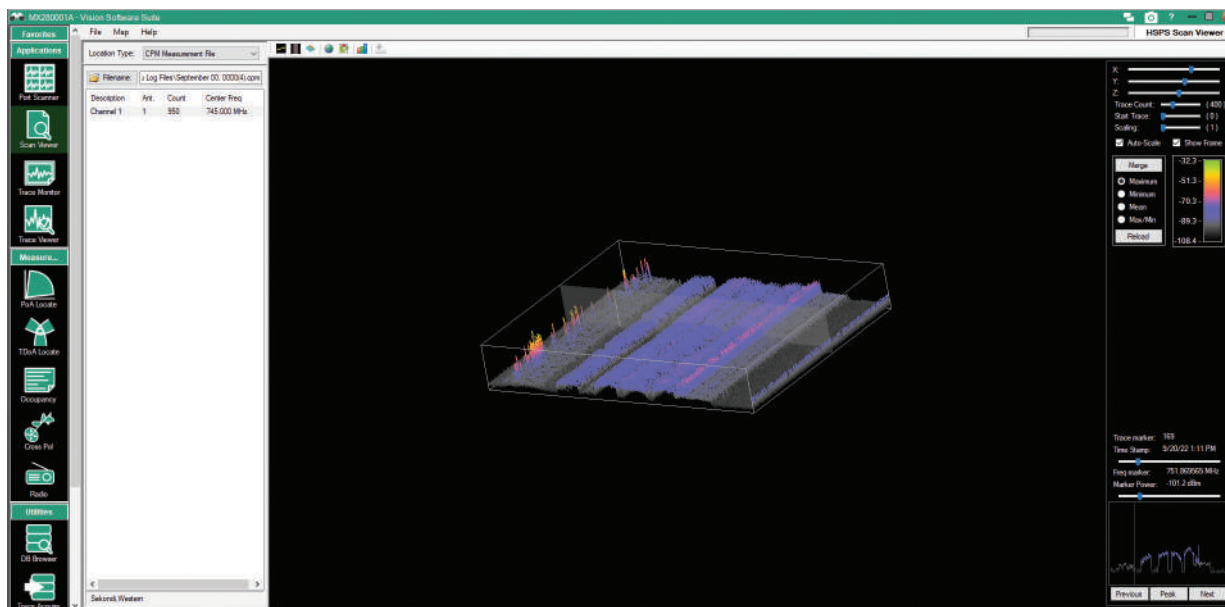


Figure 14. Scan Viewer

### Spectrum Occupancy (available with Option 400)

Given the exponentially increasing cost of spectrum, government regulators are interested in measuring various frequency channels to determine how much a given spectrum is utilized. Underutilized frequencies could then be re-purposed for other applications. An additional application for spectrum occupancy measurements is cognitive radio. Using various cognitive radio algorithms, multiple applications can be multiplexed in time for a given range of spectrum.

Anritsu's spectrum occupancy implementation allows users to set power threshold levels to determine whether a given frequency channel is to be considered occupied. In this way, noise and very low-level signals can be eliminated from the analysis. Occupancy reports can also be generated for all frequency bands measured. Figure 15 shows an example of an occupancy measurement in the FM radio band.

## Signal Broadcast Identification (Requires Option 400)

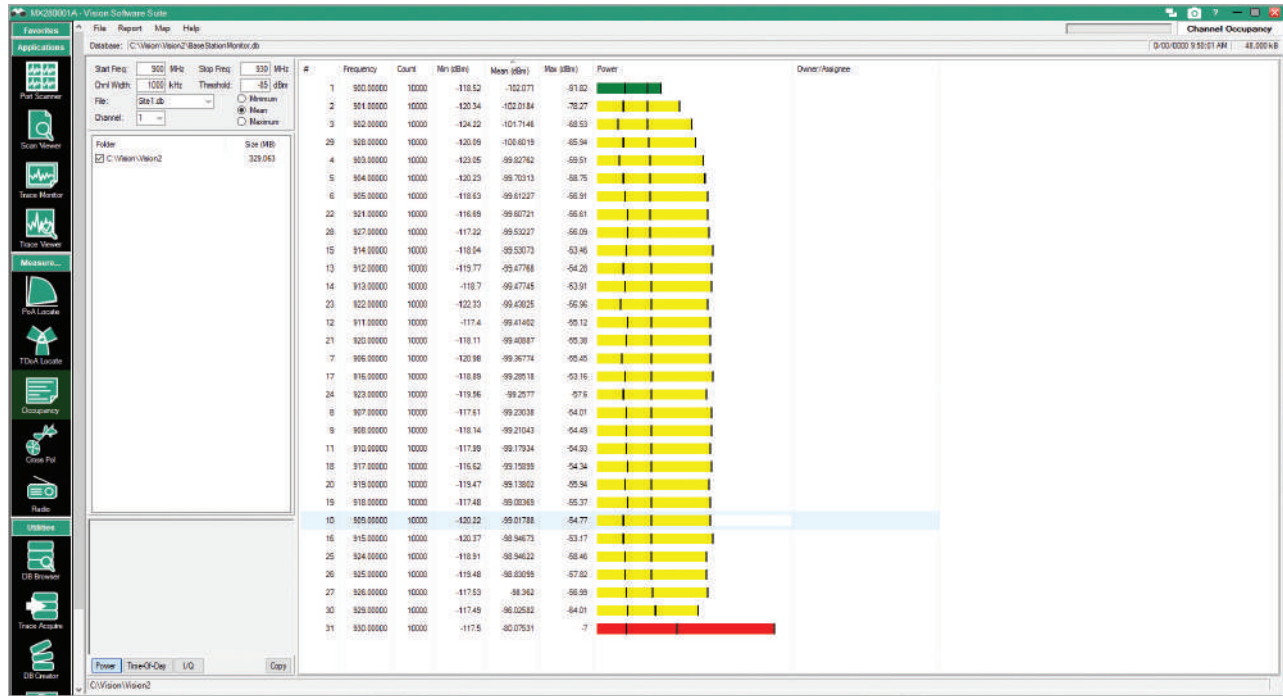


Figure 15. Spectrum Occupancy Display

When hunting interference signals, it can be helpful to have real-time information for what type of signal is authorized to be in a given channel. Regulators monitoring their frequency bands also want to view what signals are present and whether the transmissions fall within the bandwidth allocated to a particular vendor.

Anritsu's Signal Broadcast Identification feature is designed to meet these needs. Using publicly available data, users can import this information so that it is readily available once the spectrum is viewed. Whatever information that is available from the government regulator (or other agency involved with broadcast licensing) can be used. Broadcast information generally supplied include:

- Identity of broadcaster
- GPS coordinates of broadcaster's transmitter position
- Frequency band in which a broadcaster is allowed to transmit
- Power level authorized for the transmission
- Type of signal broadcast (commercial radio, public safety, cellular, etc)

It should be noted that not all country's regulators supply this information and the types of information provided on the authorized broadcaster may vary. See Figure 16 for an example of the broadcast identification feature.

## Signal Broadcast Identification (Requires Option 400)

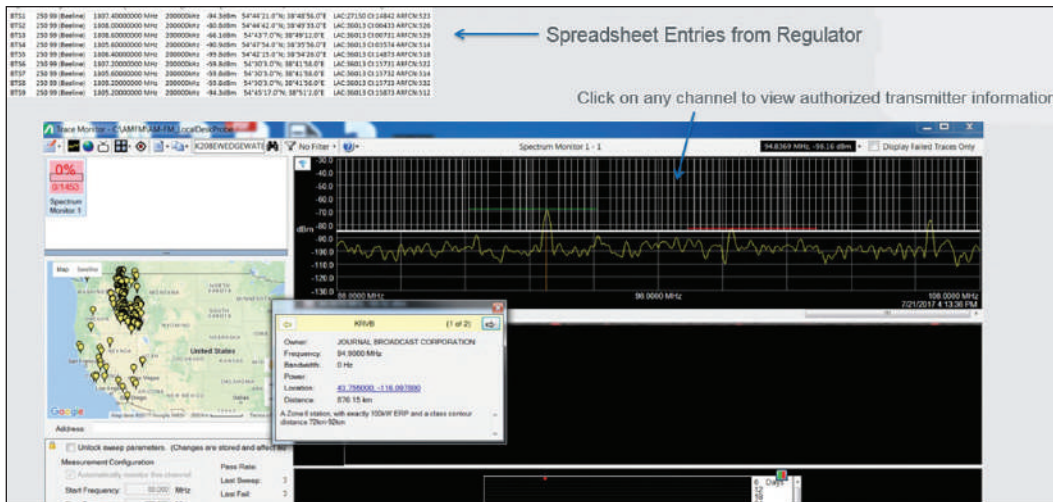


Figure 16. Signal Broadcaster Identification

Broadcaster information can be imported into Vision Monitor (Option 400) via a spreadsheet (CSV format) and overlaid on the trace display. Additionally, users can plot the positions of all the transmitters on a map. Users can simply 'mouse-over' an icon on the map to see a pop-up window showing all information available on that transmitter.

In addition to broadcaster information supplied by the regulator, users may want to plot and identify other positions. For example, a cellular operator may want to identify the positions and frequencies of all their BTS transceiver equipment. This information is often considered proprietary and would be used only within the operator's system. Interference hunters working for the operator could use this information to know their proximity to BTS equipment to prevent over-powering their receivers.

## AM/FM Demodulation (available with Option 400)

AM/FM is offered as a stand-alone option, which can be downloaded with the Vision software installation package available on Anritsu's website. The AM/FM option provides analysis information included AM modulation quality and FM deviation metrics.

The AM/FM demodulation option also enables the user to remotely capture AM/FM signals and listen to the signals via their PA/laptop. The AM/FM signals can also be saved as .WAV or .MP3 files to be played at a later time (Figure 17).



FM deviation graphs can also be shown (Figure 18). The graphs are available via the Remote Spectrum Monitor/Vision API only and are not included in the stand-alone application. The AM/FM demodulation option is offered only in API format for system integrators and other customers. Typical specifications for AM and FM measurements are shown here:

- FM Deviation (Up to 75 kHz, 5% Accuracy),  
Input Level > -90 dBm
- AM Modulation (0 to 100% Depth, 5% Accuracy),  
Input Level > -90 dBm

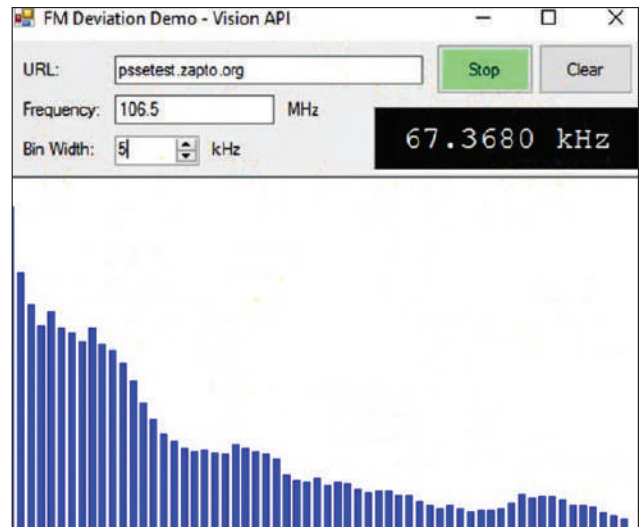
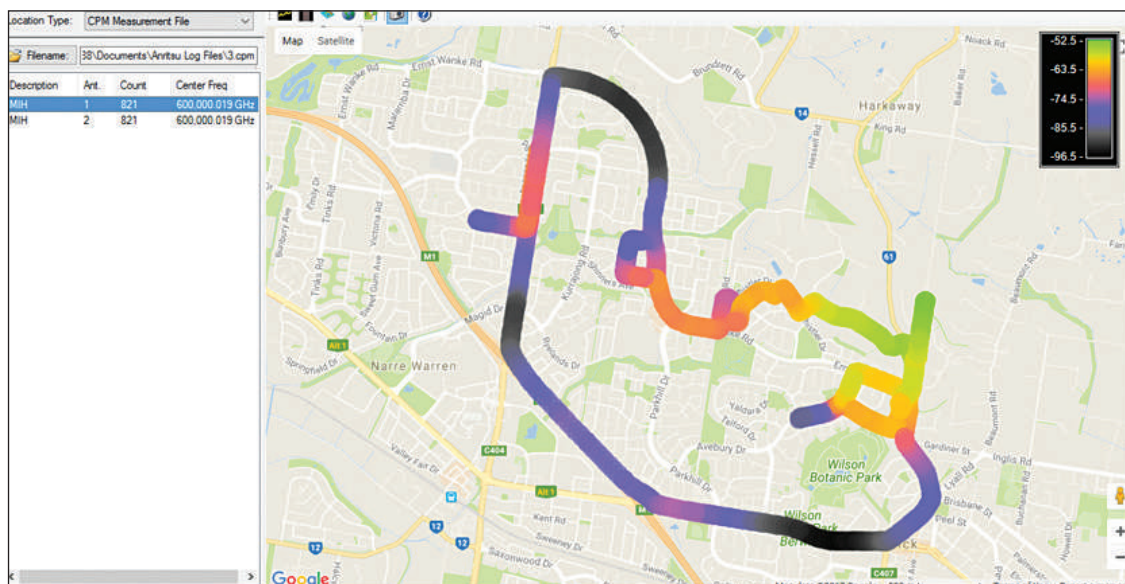


Figure 18. FM Deviation Measurement Display  
(graph available only through the API)

### Coverage Mapping (Option 486, requires Option 407)

The coverage mapping option (Figure 19) provides wireless service providers, public safety users, land mobile radio operators, and government regulators with the ability to map signal information over any given outdoor geographic area. The coverage mapping tool is offered with the following:

- Ability to scan over multiple frequency channels
- Measurements can be taken based on RSSI, Channel Power, or Occupied Bandwidth
- The color scale used for mapping can be changed to match the dynamic range of signals measured
- Measurements can be imported into Google Earth for further display and analysis
- Not supported by Field Master Pro™ Series MS2070A, MS2080A, MS2090A. and Remote Spectrum Monitor MS27201A



### Spectrum Monitor Solutions

Anritsu offers several spectrum monitoring systems designed for both indoor and outdoor environments. The remote spectrum monitor MS27101A (half-rack unit, Figure 20) is ideal for indoor use where space is at a premium. The remote spectrum monitor MS27102A monitor (Figure 21) is an outdoor IP67-rated probe that can be positioned on towers, rooftops, or poles. It is ideally used to monitor for both interference and unusual signal activity. The remote spectrum monitor MS27103A (Figures 22 and 23), which maintains 12 or optionally 24 RF inputs, is designed specifically for cellular systems or in applications requiring multiple RF inputs. The solution is also ideal for monitoring for interference in DAS environments. The remote spectrum monitor MS27100A (Figure 24) is our OEM model, offered to customers interested in private labeling. All platforms are designed for stability, sweep speed and low spurious signals. The MS27201A remote spectrum monitor (Figure 25) can monitor interference up to 54 GHz. This instrument is ideal for IQ capturing with its 110 MHz analysis bandwidth. For additional flexibility, the MS2090A can also be used with Vision.



Figure 20. Remote Spectrum Monitor MS27101A (half-rack)



Figure 21. Remote Spectrum Monitor MS27102A



Figure 22. Remote Spectrum Monitor MS27103A (multi-port)



Figure 23. Remote Spectrum Monitor MS27103A (24-port RF input option shown)



Figure 24. Remote Spectrum Monitor MS27100A OEM Model



Figure 25. Remote Spectrum Monitor MS27201A (9 GHz option shown)



### MS27100A, MS27101A, MS27102A, and MS27103A

- 9 kHz to 6 GHz
- Sweep speed up to 24 GHz/s
- Integrated web server to view, control, and conduct measurements via a web browser (both Chrome and Firefox supported)
- Remote firmware update capable
- Watchdog timer to ensure long-term stability for remotely deployed monitors
- IP67 rated for outdoor deployments
- Linux operating system
- Low spurious signals for accurate signal discovery
- 20 MHz instantaneous FFT bandwidth
- Low power consumption < 11 watts (input voltage 11 to 24 VDC)
- Integrated GPS receiver for monitoring location and time synchronization applications
- Gigabit Ethernet available for high-speed transmissions
- Interference analysis: spectrogram and signal strength
- Dynamic range: >106 dB normalized to 1 Hz BW
- DANL: <-150 dBm referenced to 1 Hz BW, preamp On
- Phase noise: -99 dBc/Hz @ 10 kHz offset at 1 GHz
- IQ block mode and streaming with time stamping for TDOA applications

### Field Master Pro MS2090A, Field Master MS2070A and MS2080A, and Remote Spectrum Monitor MS27201A

In addition to the Remote Spectrum Monitors listed above, Vision Monitor (Option 400) and the Vision High-Speed Port Scanner (Option 407) is also available on the MS2090A, MS2080A, and MS2070A spectrum analyzers and MS27201A remote spectrum analyzer. The MS2090A and MS27201A also supports Vision Locate (Option 401).

Key Features include:

- 9 kHz to 9/14/20/26.5/32/43.5/54 GHz
- DANL: -164 dBm (with preamp)
- TOI: +20 dBm (typical)
- Analysis bandwidth: 110 MHz
- Amp range: DANL to +30 dBm
- Phase noise at 1 GHz: -110 dBc/Hz @ 100 kHz offset (typical)
- Demodulation: 5GNR, RF, and modulation quality plus SSB signal analysis
- Resolution bandwidth (RBW): 1 Hz to 10 MHz
- RTSA bandwidth: 22, 55, 110 MHz (option dependent)
- Amplitude accuracy: < 14 GHz  $\pm 1.3$  dB ( $\pm 0.5$  dB, typical)
- Zero span with 60 ns minimum span



Field Master Pro MS2090A



Remote Spectrum Monitor MS27201A





*Field Master MS2080A*



*Field Master MS2070A*

Key Features include (Field Master MS2080A):

- Spectrum Analysis from 9 kHz to 4 GHz and 6 GHz: For coverage of common commercial RF communications bands
- Spectrogram: To capture and record intermittent and drifting signals
- RTSA: For real-time spectrum analysis with 2.5  $\mu$ s POI
- AM/FM Modulation Measurements: AM/FM modulation quality, audio output, audio spectrum and audio oscilloscope
- Smart Measurements: Includes channel power, occupied bandwidth, adjacent channel power, spectral emissions, C/I, and field strength measurements
- Spectrum Record and Playback: To record traces and play back at slow speed to track all spectrum activity
- USB Power Sensor Support: For precision power measurements of transmitters
- Site Master™ Cable and Antenna Analyzer: For RF cable and antenna testing at transmitter sites
- Zero Span: For pulse measurements
- Quasi-Peak Detector: For CISPR compliant interference measurements
- Interference Hunting: With directional antenna and eCompass handle
- Cellular Measurements: 5GNR FR1 and LTE FDD/TDD transmitter measurement suites
- 10-Inch Multi-Touch Display: Provides quick and easy configuration and results presentation
- GNSS: GPS, Galileo, GLONASS, BeiDou
- Report Generation: Integrated PDF/HTML report generator for CAA trace files, photographs and screen images

Key Features include (Field Master MS2070A):

- Spectrum Analysis from 9 kHz to 3 GHz: Full frequency coverage of HF, VHF, UHF frequency bands
- Spectrogram: To capture and record intermittent and drifting signals
- Spectrum Record and Playback: To record traces and play back at slow speed to track all spectrum activity
- AM/FM Modulation Measurements: Simultaneous display of RF spectrum, Audio spectrum, Audio oscilloscope, Modulation quality, SINAD and THD
- Smart Measurements: Includes channel power, occupied bandwidth, adjacent channel power, spectral emissions, C/I, and field strength measurements
- Interference Hunting: With directional antenna and eCompass handle
- USB Power Sensor Support: For precision power measurements of transmitters
- Traces and Markers: Up to 6 traces and 12 markers
- Zero Span: For pulse measurements
- Quasi-Peak Detector: For CISPR compliant interference measurements
- Battery Life: Three hours with standard battery, typically >6 hours with accessory power pack
- 10-Inch Multi-Touch Display: Provides quick and easy configuration and results presentation
- GNSS: GPS, Galileo, GLONASS, BeiDou
- Connectivity: Ethernet, USBTMC (Wi-Fi option)





### Summary

In order to minimize expense while preserving network integrity, a highly automated process is required. Vision software provides an efficient user-friendly method for monitoring frequencies and alerting the user when unusual signal activity is present. By identifying patterns of interference, recording spectrum history, and geo-locating the position of target signals, Vision software is the perfect solution for your interference mitigation needs.

#### Vision Instrument Options

MS27100A-0400	Enable Vision Monitor on MS27100A	MS27103A-0400	Enable Vision Monitor on MS27103A
MS27100A-0401	Enable Vision Locate on MS27100A (requires Option 400)	MS27103A-0401	Enable Vision Located on MS27103A (requires Option 400)
MS27100A-0407	Enable High-Speed Port Scanner on MS27100A	MS27103A-0407	Enable High-Speed Port Scanner on MS27103A
MS27100A-0486	Coverage Mapping (requires Option 407)	MS27103A-0486	Coverage Mapping (requires Option 407)
MS27101A-0400	Enable Vision Monitor on MS27101A	MS27201A-0400	Enable Vision Monitor
MS27101A-0401	Enable Vision Locate on MS27101A (requires Option 400)	MS27201A-0401	Enable Vision Locate
MS27101A-0407	Enable High-Speed Port Scanner on MS27101A	MS27201A-0407	Enable Vision High-Speed Port Scanner
MS27101A-0486	Coverage Mapping (requires Option 407)	MS27201A-xxxx-0098	Standard Calibration to ISO17025 and ANSI/NCSL Z540-1 (xxxx is the frequency option number)
MS27102A-0400	Enable Vision Monitor on MS27102A	MS27201A-xxxx-0099	Premium Calibration to ISO17025 and ANSI/NCSL Z540-1 plus test data (xxxx is the frequency option number)
MS27102A-0401	Enable Vision Locate on MS27102A (Requires Option 400)	MS2090A-0400	Enable Vision Monitor
MS27102A-0407	Enable High-Speed Port Scanner on MS27102A	MS2090A-0401	Enable Vision Locate
MS27102A-0486	Coverage Mapping (requires Option 407)	MS2090A-0407	Enable Vision High-Speed Port Scanner
		MS2080A-0400	Enable Vision Monitor
		MS2080A-0407	Enable Vision High-Speed Port Scanner
		MS2070A-0407	Enable Vision Monitor
		MS2070A-0407	Enable Vision High-Speed Port Scanner

Refer to your product technical data sheet for a comprehensive description of instrument features, available options, and supporting accessories.

- **United States**

**Anritsu Americas Sales Company**

450 Century Parkway, Suite 190, Allen, TX 75013 U.S.A.  
Phone: +1-800-Anritsu (1-800-267-4878)

- **Canada**

**Anritsu Electronics Ltd.**

**Americas Sales and Support**

450 Century Parkway, Suite 190, Allen, TX 75013 U.S.A.  
Phone: +1-800-Anritsu (1-800-267-4878)

- **Brazil**

**Anritsu Eletronica Ltda.**

Praça Amadeu Amaral, 27 - 1 Andar  
01327-010 - Bela Vista - Sao Paulo - SP, Brazil  
Phone: +55-11-3283-2511  
Fax: +55-11-3288-6940

- **Mexico**

**Anritsu Company, S.A. de C.V.**

Blvd Miguel de Cervantes Saavedra #169 Piso 1, Col. Granada  
Mexico, Ciudad de Mexico, 11520, MEXICO  
Phone: +52-55-4169-7104

- **United Kingdom**

**Anritsu EMEA Ltd.**

200 Capability Green, Luton, Bedfordshire, LU1 3LU, U.K.  
Phone: +44-1582-433200  
Fax: +44-1582-731303

- **France**

**Anritsu S.A.**

12 avenue du Québec, Immeuble Goyave,  
91140 VILLEBON SUR YVETTE, France  
Phone: +33-1-60-92-15-50

- **Germany**

**Anritsu GmbH**

Nemetschek Haus, Konrad-Zuse-Platz 1,  
81829 München, Germany  
Phone: +49-89-442308-0  
Fax: +49-89-442308-55

- **Italy**

**Anritsu S.r.l.**

Spaces Eur Arte, Viale dell'Arte 25, 00144 Roma, Italy  
Phone: +39-6-509-9711

- **Sweden**

**Anritsu AB**

Kistagången 20 B, 2 tr, 164 40 Kista, Sweden  
Phone: +46-8-534-707-00

- **Finland**

**Anritsu A/S**

Technopolis Aviapolis, Teknobulevardi 3-5 (D208.5.),  
FI-01530 Vantaa, Finland  
Phone: +358-20-741-8100

- **Denmark**

**Anritsu A/S**

c/o Regus Winghouse, Ørestads Boulevard 73, 4th floor,  
2300 Copenhagen S, Denmark  
Phone: +45-7211-2200

- **Spain**

**Anritsu EMEA Ltd.**

**Representation Office in Spain**

Paseo de la Castellana, 141. Planta 5, Edificio Cuzco IV  
28046, Madrid, Spain  
Phone: +34-91-572-6761

- **Austria**

**Anritsu EMEA GmbH**

Am Belvedere 10, A-1100 Vienna, Austria  
Phone: +43-(0)1-717-28-710

- **United Arab Emirates**

**Anritsu EMEA Ltd.**

**Anritsu A/S**

Office No. 164, Building 17, Dubai Internet City  
P. O. Box - 501901, Dubai, United Arab Emirates  
Phone: +971-4-3758479

- **India**

**Anritsu India Private Limited**

6th Floor, Indiqueb ETA, No.38/4, Adjacent to EMC2,  
Doddanekundi, Outer Ring Road, Bengaluru - 560048, India  
Phone: +91-80-6728-1300  
Fax: +91-80-6728-1301

- **Singapore**

**Anritsu Pte. Ltd.**

1 Jalan Kilang Timor, #07-04/06 Pacific Tech Centre  
Singapore 159303  
Phone: +65-6282-2400  
Fax: +65-6282-2533

- **Vietnam**

**Anritsu Company Limited**

16th Floor, Peakview Tower, 36 Hoang Cau Street, O Cho Dua Ward,  
Dong Da District, Hanoi, Vietnam  
Phone: +84-24-3201-2730

- **P.R. China (Shanghai)**

**Anritsu (China) Co., Ltd.**

Room 2701-2705, Tower A, New Caohejing International  
Business Center No. 391 Gui Ping Road Shanghai, 200233, P.R. China  
Phone: +86-21-6237-0898  
Fax: +86-21-6237-0899

- **P.R. China (Hong Kong)**

**Anritsu Company Ltd.**

Unit 1006-7, 10/F., Greenfield Tower, Concordia Plaza,  
No. 1 Science Museum Road, Tsim Sha Tsui East,  
Kowloon, Hong Kong, P.R. China  
Phone: +852-2301-4980  
Fax: +852-2301-3545

- **Japan**

**Anritsu Corporation**

8-5, Tamura-cho, Atsugi-shi, Kanagawa, 243-0016 Japan  
Phone: +81-46-296-6509  
Fax: +81-46-225-8352

- **Korea**

**Anritsu Corporation, Ltd.**

8F, A TOWER, 20, Gwacheondaero 7-gil, Gwacheon-si,  
Gyeonggi-do, 13840, Republic of Korea  
Phone: +82-2-6259-7300  
Fax: +82-2-6259-7301

- **Australia**

**Anritsu Pty. Ltd.**

Unit 20, 21-35 Ricketts Road, Mount Waverley, Victoria 3149, Australia  
Phone: +61-3-9558-8177  
Fax: +61-3-9558-8255

- **Taiwan**

**Anritsu Company Inc.**

7F, No. 316, Sec. 1, NeiHu Rd., Taipei 114, Taiwan  
Phone: +886-2-8751-1816  
Fax: +886-2-8751-1817

List Revision Date: 20230901



Anritsu utilizes recycled paper and environmentally conscious inks and toner.



© Anritsu All trademarks are registered trademarks of their

11410-00876, Rev. M Printed in United States 2023-11  
©2023 Anritsu Company. All Rights Reserved



**ES France - Département Tests & Mesures**  
127 rue de Buzenval BP 26 - 92380 Garches



**Tél. 01 47 95 99 45**  
**Fax. 01 47 01 16 22**



**e-mail : tem@es-france.com**  
**Site Web : www.es-france.com**