

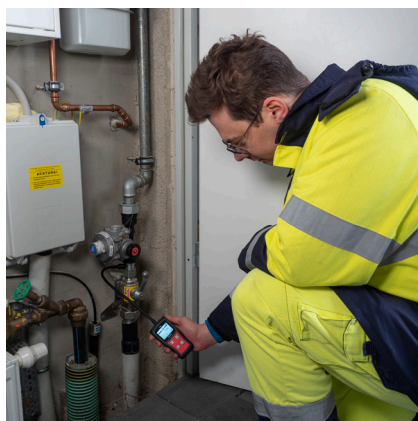
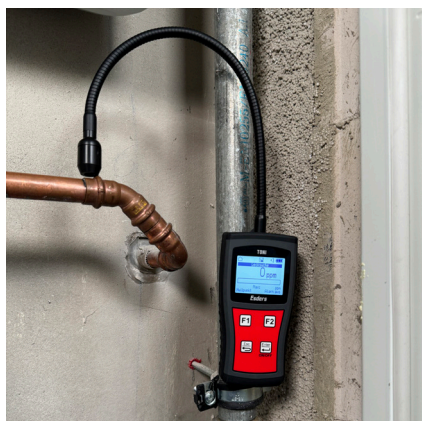
TONI GasTest CH4

Gas detector for methane



- Robust hand-held measuring device in an ergonomic housing
- Magnets integrated in the back of the housing for mounting
- Versatile use in gas installations
- Efficient gas detection function with vibration alarm and digital display of all measured values
- High-contrast LCD graphic display with backlight
- Long-lasting lithium-ion batteries with over 20 hours of operating time in leak detection
- Systematic evaluation of measurement data with the free Esders Connect app
- Simple and easy handling through intuitive menu navigation

USE OF TONI



Fields of application

Detection of leaks in the gas installation, in order to locate them quickly and precisely. For example, to detect leaks after a serviceability test with the result 'reduced usability' or when changing a gas meter.

The following menu options are available:

- **Leak detection:** detect even the smallest leaks in installation pipes and connection points.
In addition to the visual and acoustic signal, a vibration alarm is available.
- **Calibration/adjustment:** sensor sensitivity test and adjustment of the device according to DVGW note G 465-4 by applying test gas and setpoint adjustment at the push of a button.
- **Settings:** User-defined configuration of operating parameters such as the unit of measurement, automatic switch-off or the switch-on duration of the backlight according to user requirements.

TECHNICAL DATA

Display	LCD graphic display with 128 x 64 pixels + special characters, can be illuminated	
Dimensions without gooseneck	Length	approx. 13 cm
	Width	approx. 6,5 cm
	Height	approx. 3,5 cm
Gooseneck with sensor head	Length	approx. 35 cm
Weight with gooseneck	265 g	
Protection	IP 64	
Operating conditions	Temperature	from -20°C to +50°C
	Calibration	from +10°C to +40°C
	Humidity	0-95 % r.F. (non-condensing)
	Ambient pressure	800 - 1100 hPa
	Gas inlet	max. 60 hPa inlet pressure
Storage conditions	Temperature	from -20°C to +60°C
	Humidity	0-95 % r.F. (non-condensing)
	Ambient pressure	800 - 1200 hPa
Operating time	Display illumination off	approx. 31 hours
	Display illumination on	approx. 20 hours
Power supply	long-lasting lithium-ion battery, rechargeable via USB-C	
Cloud storage	included after registering in Esders Connect	
Alarm level	>95 dB (A)	
Measuring range	Methane	0 - 10.000 ppm
Alarm signals	optical, acoustic and vibration	
t90 response time	approx. 4.5 seconds	

Subject to technical changes! As of 2025/01

Esders

Esders GmbH • Hammer-Tannen-Str. 26-30 • 49740 Haseluenne
Tel. 05961/9565-0 • info@esders.de • www.esders.com



ES France - Département Bio-tests & Industries
127 rue de Buzenval BP 26 - 92380 Garches



Tél. 01 47 95 99 90
Fax. 01 47 01 16 22



e-mail : bio@es-france.com
Site Web : www.es-france.com