

TESTING INSTRUMENTS FOR
A MEASURABLE DIFFERENCE...

IDM
instruments


COEFFICIENT OF FRICTION TESTERS

COF SERIES



10 - 11 Colorado Court Hallam,
Wetherby, LS23 7BQ, UK

 ES France - Département Bio-tests & Industries
127 rue de Buzenval BP 26 - 92380 Garches

 Tél. 01 47 95 99 90
Fax. 01 47 01 16 22

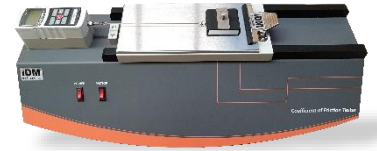
 e-mail : bio@es-france.com
Site Web : www.es-france.com

INTRODUCTION

The Coefficient of Friction Testers have proven to be a fast, reliable and accurate method of determining coefficient of friction. Our range of COF Testers are used to determine the static and kinetic friction of plastic film, sheeting, paper and other sheeted material coatings. Their small bench top design makes it easy to use in a laboratory or setup out on the production floor for offline testing as needed.

Legacy Model – COF (IDM-C0055-M1)

The legacy model C0055-M1 unit can measure Static COF (peak) from a resting position and continue to move testing surfaces in a relative motion to give an accurate kinetic COF (dynamic) result. This model features a stationary sled with a moving plane and also comes with the option of computer software to record data – see Software. Peel Testing can also be carried out on this unit – see Options



C.O.F Tester with Variable Speed (IDM-C0055-M2)

The C0055-M2 model has all the same features as the C0055-M1 with the addition of variable speed from 50 – 300mm/min using a stepper motor for accurate variable speed control. Once a test is completed and the sample has been unloaded, the unit will return to the start point “HOME” ready for the next test. Controls are via an LCD touch screen for stop, start, home and speed changes. This model is the next level in accurate and precise COF measurement for static and kinetic results and comes with the option of computer software to record data – see Software. Peel Testing can also be carried out on this unit – see options.

C.O.F Tester with Variable Speed & Heated Platen (IDM-C0055-M3)

With variable speed, touch screen operation & in-built heated platen, model C0055-M3 is most ideal for plastic film testing. The temperature range on this unit is between ambient to 170°C, allowing for testing at elevated temperatures. This model also comes with the option of computer software to record data – see Software. Peel Testing can also be carried out on this unit – see options.



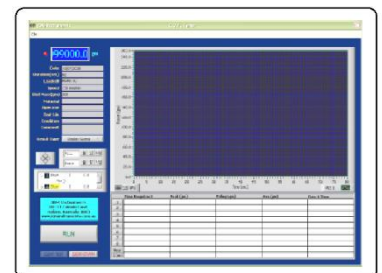
FEATURES

- Static & Kinetic Friction
- 1 x Sled
- USB output
- 1 x cutting template
- Optional Touch Screen operation

SOFTWARE & REPORTING

The C0055 range also has the option of a computer software package to record

- Dynamic real-time display
- Test identification entry
- Statistical analysis
- Peak force value
- Results averaging
- Static Point
- Screen print out
- Kinetic average
- Data export to Excel
- Adjustable data collection limits



SPECIFICATIONS

Model	IDM-C0055-M1	IDM-C0055-M2	IDM-C0055-M3
Speed & Accuracy	150 mm/min \pm 0.2% of full scale	50-300 mm/min \pm 0.2% of full scale	50-300 mm/min \pm 0.2% of full scale
Friction Function & Selectable Units	Static and Kinetic - kgF, lbF, N, COF, ozF, gF		
Force Range	1-10N (1 x 0.001kgF)		
Sled Dimensions	63mm x 63mm – Weight: 200 \pm 2g		
Plane	150mm x 300mm		
Travel Distance	220mm		
Communication	USB		
Cutting Templates	1x Sled & 1x Moving Plane		

OPTIONAL ITEMS

- **IDM-C0055-OP1** - COF Data Acquisition Software
- **IDM-C0055-OP2** - 180° Peel Fixture Rod
- **IDM-C0055-OP3** - Cutting Template for Carton board

APPLICATIONS

- Flexible packaging
- Metal
- Printing
- Coatings
- Linoleum
- Foils
- Paper
- Rubber
- Composites
- Plastics
- Paper

STANDARDS

- ASTM D1894
- ASTM D2534 (Coefficient of Kinetic Friction for Wax Coatings)
- ASTM D3330 (Peel Adhesion for Pressure Sensitive Tape 180°)
- ASTM D4521 (COF for Corrugated/Fibreboard)
- ASTM F88 (Seal Strength for Flexible Barrier Material)
- ISO 8295 (COF for Plastics)
- TAPPI T816 (COF for Corrugated and Paperboard)
- TAPPI T549 (COF for Uncoated Writing & Printing Paper)



CONNECTIONS

- **Electrical:** 220/240 VAC @ 50 HZ
or
110 VAC @ 60 HZ
(please specify when ordering)

DIMENSIONS

Packaged

IDM-C0055-M1

- H: 380 mm
- W: 470 mm
- D: 860 mm
- Weight: 20 kg

IDM-C0055-M2

- H: 430 mm
- W: 560 mm
- D: 960 mm
- Weight: 21 kg

IDM-C0055-M3

- H: 430 mm
- W: 560 mm
- D: 960 mm
- Weight: 24 kg

WORKING ENVIRONMENT

- Temperature: -10°C to 40°C
- Humidity: 25% to 85%

WARRANTY AND CALIBRATION SERVICES

- **1 year Warranty**
- Our **Preventive Maintenance and Calibration (PM&C) program** has been designed to make the maintenance and calibration of your valuable testing equipment more cost effective by preventing breakdowns and downtime by regular calibration, service and replacement of defective parts. Talk to us about this today.