

# RA-915F

Zeeman mercury analyzer



## Method of Measurement

Atomic absorption spectrometry at 254 nm with Zeeman correction for background absorption for interference-free measurement.

## Applications

Direct determination of the mercury concentration in solid and liquid samples, such as:

- ✓ foodstuff and biological materials;
- ✓ crude oil and naphtha;
- ✓ coal, fly ash, gypsum;
- ✓ passive air samplers;
- ✓ US EPA method 30B, PS12B, and CEN/TS 17286 sorbent traps;
- ✓ waste waters and sludge;
- ✓ soils and sediments.

## Principle of Operation

Direct thermal decomposition of a sample and subsequent measuring the absorption of the 254-nm resonance radiation by mercury atoms using Zeeman correction for background absorption.

## Features and Benefits

- ✓ Direct mercury determination in samples with complex matrices.
- ✓ Highest selectivity.
- ✓ No pre-treatment procedures required.
- ✓ Broad dynamic measurement range: > 5 orders of magnitude.
- ✓ Automated temperature adjustment control for dynamic range enlargement.
- ✓ No memory effect.
- ✓ Thermoscanning option.
- ✓ Visualization of mercury output from the sample, user-friendly computer interface.
- ✓ High calibration stability.
- ✓ No carrier gas is needed.

[www.lumexinstruments.com](http://www.lumexinstruments.com)

## Specifications

Detection limit	0.5–3 µg/kg
Ladles volume	1.2 / 2.5 mL
Upper limit of the measurement range of concentration for a 20 mg sample	2000 mg/kg
Analysis time	1–5 min
Power supply	110–242 VAC, 50/60 Hz

### MEASUREMENT UNIT

Dimensions (LxWxH)	175×110×235 mm
Weight	4.0 kg

### SAMPLING UNIT

Dimensions of power supply unit (LxWxH)	380×260×130 mm
Weight of power supply unit	10 kg
Dimensions of thermal chamber unit and optical unit (LxWxH)	350×350×120 mm
Weight of thermal chamber unit and optical unit	7.5 kg

## Delivery Set

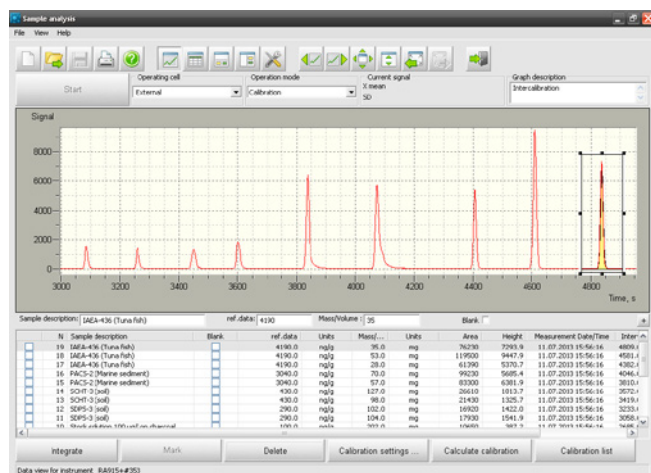
RA-915F Zeeman mercury analyzer comes with RAPID software, interface cables, user manual.

## Warranty

RA-915F Zeeman mercury- analyzer is covered by 12-months limited warranty.

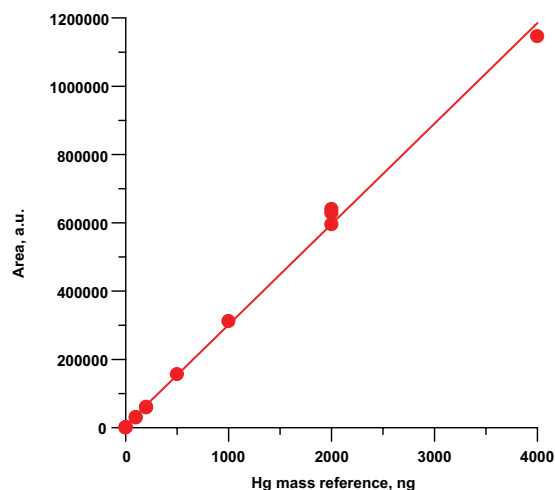
## Services

Upon request installation and commissioning of RA-915F Zeeman mercury analyzer can be carried out on Customer's site by our service engineers. Support and training of operators, meeting Customer's specific needs, are provided by highly qualified application engineers.



### Liquid & Solid Samples Analysis

Fast and simple



### Linear calibration in a range of 40 – 40,000 ng Hg

Wide dynamic range



Find your local Lumex Instruments distributor

[www.lumexinstruments.com](http://www.lumexinstruments.com)

[sales@lumexinstruments.com](mailto:sales@lumexinstruments.com)

