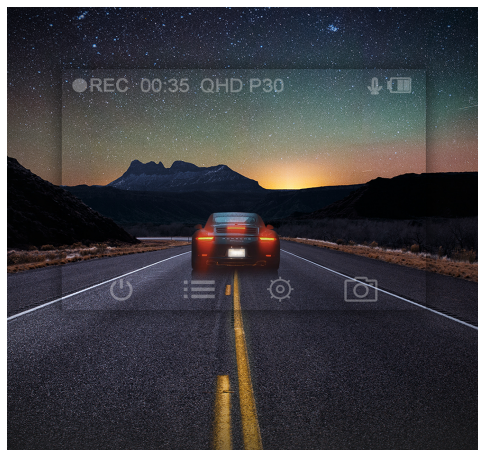




## Dashcams

# DrivePro 110

Road safety is important. Transcend's DrivePro 110 dashcam utilizes the high-sensitivity image sensor to provide high-resolution images with extremely fine tonal gradation even in low light. In addition, the DrivePro 110 features an auto brightness-adjusting display, a built-in battery, a handy snapshot button, emergency recording, headlight reminder, and driver fatigue alert.



### Vision in the dark

The DrivePro 110 features the high-sensitivity image sensor to capture sharp, high-resolution images with superb, rich color even in low light, making it perfect for filming during both day and night. It has a smart adaptive display that responds to the lighting in your surroundings and automatically adjusts accordingly. When driving at night, for example, the screen will automatically dim, making it easier on your eyes.



### A must-have for road trips

The DrivePro 110 is the ultimate definition of driving securely and with peace of mind. With its practical features, this classic dash cam will keep your road trips safe. It comes bundled with a Transcend memory card built of high-quality NAND flash tested under harsh environmental conditions. Pre-configured with Transcend's exclusive firmware settings, the memory card offers stable performance and ensures your recordings will be saved in their entirety.



### Get buttery smooth, detail-packed footage

Supporting 1440P 2K QHD recording at 30fps, the DrivePro 110 will give you footage as smooth as butter. Shooting at 30fps means you can zoom in on any shot and easily make out crucial details, such as license plates.





## Dashcams DrivePro 110

### Features

- Built-in battery prevents losing crucial images in the event of a power outage
- Emergency recording prevents overwriting of the current recorded file
- Driver fatigue alert regularly reminds the driver to be fully rested
- Headlight reminder automatically activates in poor lighting conditions



#### DrivePro Toolbox

DrivePro Toolbox helps you play and manage videos recorded on your DrivePro dashcam without installing any separate codecs.

### Specifications

#### Appearance

Dimensions	70.2 mm x 63.1 mm x 32.5 mm (2.76" x 2.48" x 1.28")
Weight	69 g (2.43 oz)

#### Interface

USB Type	micro USB to car lighter adapter
Connection Interface	USB 2.0

#### Hardware

Display	2.4" color TFT LCD
Viewing Angle	140° (diagonal)
Aperture	F/2.0

#### Operating Environment

Operating Temperature	-20°C (-4°F) ~ 65°C (149°F)
Storage Temperature	-25°C (-13°F) ~ 70°C (158°F)
Input Voltage (Power cable)	12V ~ 24V
Output Voltage (Power cable)	5V / 1A

#### Format

Resolution	2K QHD 1440P
Frame Rate	Up to 60 fps (1080P)
Video Format	MP4 (H.264)

#### Warranty

Certificate	CE / UKCA / FCC / BSMI / MIC / KC / EAC / RCM
Warranty	Two-year Limited Warranty

#### Package

Package Contents	Full unit / 32GB microSD memory card / 64GB microSD memory card / Car mount / Car lighter adapter / Quick Start Guide
------------------	---

### Ordering Information

32GB	TS-DP110M-32G
64GB	TS-DP110M-64G

Product specifications are subject to change without notice. Pictures shown may differ from actual products. Total accessible capacity varies depending on operating environment.

