



# Echologger EU D032 / ECT D032

## Ultracompact survey grade SBES

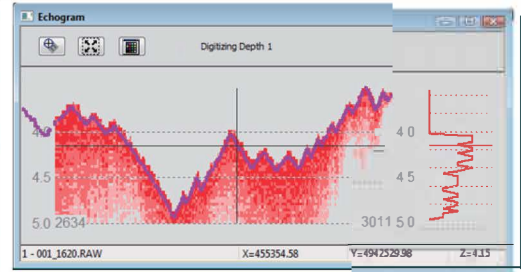
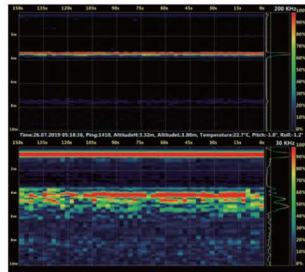
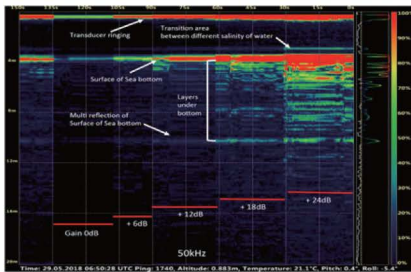
### for hydrographic and environmental survey

#### Ultracompact

Echologger EU D032/ ECT D032 is an ultracompact portable dual frequency single beam echosounder for hydrographic and environmental survey applications. The device carries two frequencies (30 & 200kHz) working simultaneously (alternating). It is a self-contained device with a transducer, operating electronics and a tilt sensor in an ultracompact single unit. Singal can penetrate through soft sediments to detect hard bottom classification as well as detect the surface layer.

#### Digital echogram replacing paper chart

Echologger EU D032/ ECT D032 operates in echogram mode recording high resolution full water column acoustic envelope as well as in digital depth mode generating NMEA compatible digital altitude data



#### Combability

Echologger EU D032/ ECT D032 works with most of data collectors in the market through USB, RS-232C or Bluetooth. It is also compatible with major hydrographic data acquisition softwares such as HyPack , HydroMagic and free Echologger Control Program.

#### Quick and easy mobilization

Echologger EU D032/ ECT D032 mobile kits can support quick and easy mobilization with optional Bluetooth power pack or directly to data collector/mini PC through USB port or long-range wifi module



- USV application
- EU D032/ ECT D032
  - RTK/PPK GNSS
  - Survey poles
  - Mounting bracket



- Small boat application
- EU D032/ ECT D032
  - RTK/PPK GNSS
  - Survey pole
  - Mounting bracket
  - Rugged tablet / Data collector



- Small boat application
- EU D032/ ECT D032
  - RTK/PPK GNSS
  - Survey pole
  - Mounting bracket
  - DU-BS21 (BT power pack)



- Small boat application
- D032
  - RTK/PPK GNSS
  - Survey poles
  - Mounting bracket
  - Long-range WiFi



## Specifications

Acoustic Frequency	30 kHz / 200 KHz
Beam width	26° / 5° Conical (-3dB) (echo mode)
Transmit Pulse Width	100µsec ~ 1,000µsec
Transmit Power	Max. 30 W, adjustable
TVG Control	Up to 60 dB,
Gain Control	-30 dB to +30 dB
Operating Distance Range	1.5 m ~ 200 m (30 kHz) / 0.5 m ~ 200 m (200 kHz)
Repetition (Ping) Rate	100 Hz max
Sampling Rate	Max 100 kHz; adjustable, or auto mode (default)
Water Column Resolution	Appx. 7.5 mm @ 100 kHz sampling
Altimeter Range Resolution	1.0 mm
Temperature sensor Resolution	0.1°C
Tilt sensor integrated	Dual-axis (Roll & Pitch) ±90°, Inclination data resolution 0.1°
Digital Output Interface	EU D032: USB 2.0 ECT D032: RS-232, RS-485 (selectable)
Communication Speed	EU D032: 4,800 ~ 921,600, 3M baud (115,200 baud default) ECT D032: 4800 ~ 921,600 baud (115,200 baud default)
Data Output Format	Profile 10/12bit resolution ASCII Text Profile 12bit Binary / 8bit companded Binary Altitude NMEA0183 / Simple Altimeter Deso-25 Sonarmite DFX
Configuration and Data reading	Echologger Echosounder Control Program (Dual) or any Terminal program
Multi node Internetworking (RS485 only)	Up to 32 units
Connector	EU D032: LTW 12-05PMMS-SH8003 ECT D032S: LTW M12A-08PMMS-SH8002 ECT D032: SEACON MCBH8SS
Power supply	EU D032: USB Powered, 2W max ECT D032: 10 ~ 75 VDC, 2W max, Internally isolated
Operation Temperature	-10°C +50°C
Operating Depth	EU D032 / ECT D032S: 1m (for surface vehicle) ECT D032C: 100m
Housing	Acetal
Dimensions	Ø96 mm x L90 mm (without connector)
Weight	740g (without cable)
Other features	Use both frequencies simultaneously or separately Compatible with major hydro-graphic softwares (Hypack, HydroMagic, HydroPro etc.) GPS integrated data



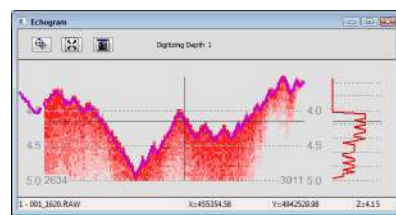
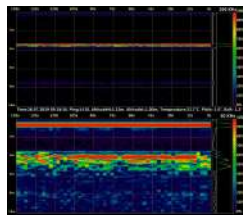
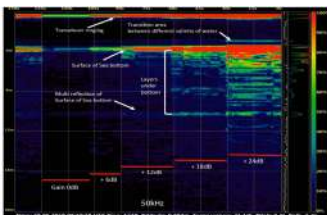


#### Ultracompac

Echologger EU D052/ ECT D052 is an ultracompact portable dual frequency single beam echosounder for hydrographic and environmental survey applications. The device carries two frequencies (50 & 200kHz) working simultaneously (alternating). It is a self-contained device with a transducer, operating electronics and a tilt sensor in an ultracompact single unit. Signal can penetrate through soft sediments to detect hard bottom classification as well as detect the surface layer.

#### Digital echogram replacing paper chart

Echologger EU D052/ ECT D052 operates in echogram mode recording high resolution full water column acoustic envelope as well as in digital depth mode generating NMEA compatible digital altitude data



#### Combability

Echologger EU D052/ ECT D052 works with most of data collectors in the market through USB, RS-232C or Bluetooth. It is also compatible with major hydrographic data acquisition softwares such as HyPack , HydroMagic and free Echologger Control Program.

#### Quick and easy mobilization

Echologger EU D052/ ECT D052 mobile kits can support quick and easy mobilization with optional Bluetooth power pack or directly to data collector/mini PC through USB port or long-range wifi module



- USV application
- EU D052/ ECT D052
  - RTK/PPK GNSS
  - Survey poles
  - Mounting bracket



- Small boat application
- EU D052/ ECT D052
  - RTK/PPK GNSS
  - Survey pole
  - Mounting bracket
  - Rugged tablet / Data collector



- Small boat application
- EU D052/ ECT D052
  - RTK/PPK GNSS
  - Survey pole
  - Mounting bracket
  - DU-BS21 (BT power pack)



- Small boat application
- D052
  - RTK/PPK GNSS
  - Survey poles
  - Mounting bracket
  - Long-range WiFi

## Specifications

Acoustic Frequency	50 kHz / 200 KHz
Beam width	27° / 7° Conical (-3dB) (echo mode)
Transmit Pulse Width	100µsec ~ 1,000µsec
Transmit Power	Max. 30 W, adjustable
TVG Control	Up to 60 dB,
Gain Control	-30 dB to +30 dB
Operating Distance Range	1.0 m ~ 200 m (50 kHz) / 0.5 m ~ 200 m (200 kHz)
Repetition (Ping) Rate	100 Hz max
Sampling Rate	Max 100 kHz; adjustable, or auto mode (default)
Water Column Resolution	Appx. 7.5 mm @ 100 kHz sampling
Altimeter Range Resolution	1.0 mm
Temperature sensor Resolution	0.1°C
Tilt sensor integrated	Dual-axis (Roll & Pitch) ±90°, Inclination data resolution 0.1°
Digital Output Interface	EU D052: USB 2.0 ECT D052: RS-232, RS-485 (selectable)
Communication Speed	EU D052: 4,800 ~ 921,600, 3M baud (115,200 baud default) ECT D052: 4800 ~ 921,600 baud (115,200 baud default)
Data Output Format	Profile 10/12bit resolution ASCII Text Profile 12bit Binary / 8bit companded Binary Altitude NMEA0183 / Simple Altimeter Deso-25 Sonarmite DFX
Configuration and Data reading	Echologger Echosounder Control Program (Dual) or any Terminal program
Multi node Internetworking (RS485 only)	Up to 32 units
Connector	EU D052: LTW 12-05PMMS-SH8003 ECT D052S: LTW M12A-08PMMS-SH8002 ECT D052: SEACON MCBH8SS
Power supply	EU D052: USB Powered, 2W max ECT D052: 10 ~ 75 VDC, 2W max, Internally isolated
Operation Temperature	-10°C +50°C
Operating Depth	EU D052 / ECT D052S: 1m (for surface vehicle) ECT D052-100: 100m
Housing	Acetal
Dimensions	Ø74 mm x L90 mm (without connector)
Weight	460g (without cable)
Other features	Use both frequencies simultaneously or separately Compatible with major hydro-graphic softwares (Hypack, HydroMagic, HydroPro etc.) GPS integrated data

