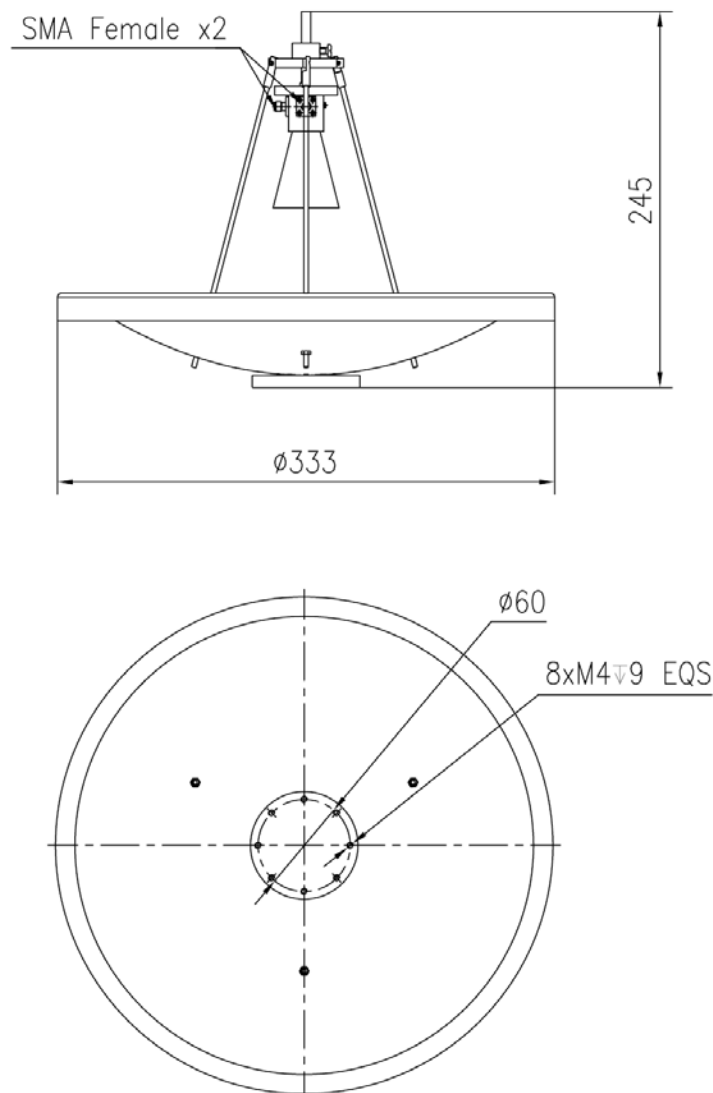


Technical Specification



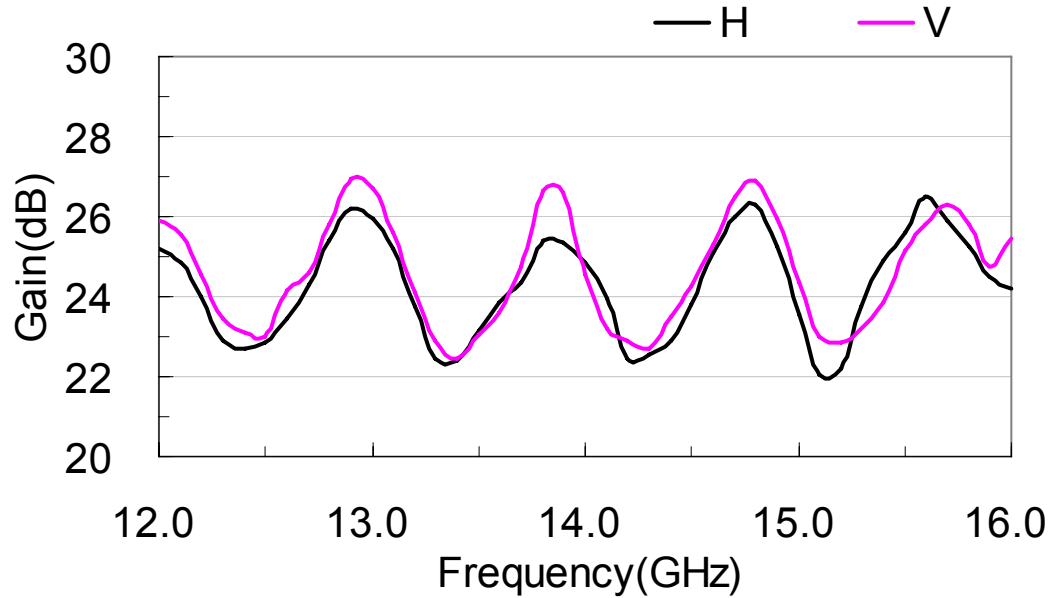
Frequency Range(GHz)	12.0 - 16.0
Gain(dB)	24 Typ.
3dB Beamwidth(deg)	8 - 3
Polarization	Dual Linear
VSWR	3.5 Max
Connector	SMA-F
Reflector Material	Al
Size(mm)	Φ333x245
Net Weight(Kg)	0.9 Around

Outline Drawing (Size: mm)

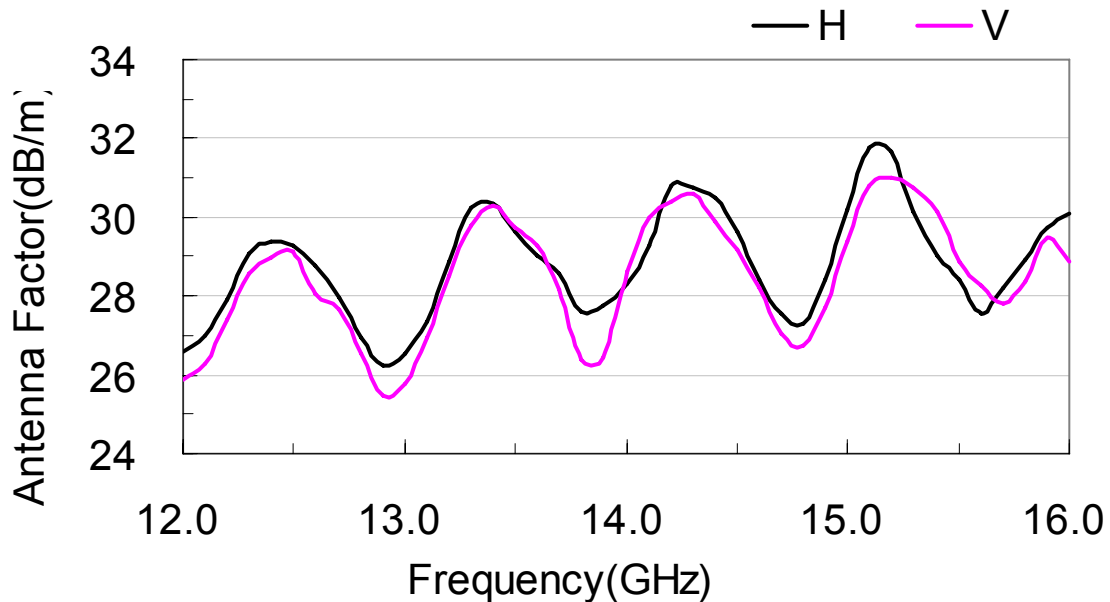


Test Results

1. Gain

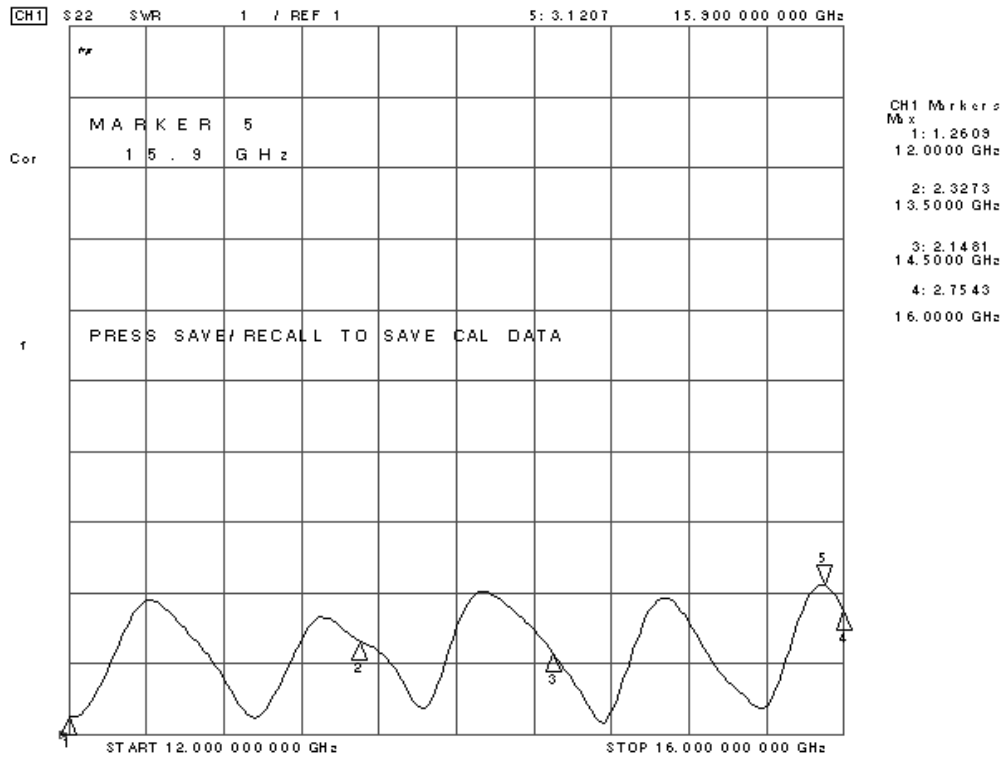


2. Antenna Factor

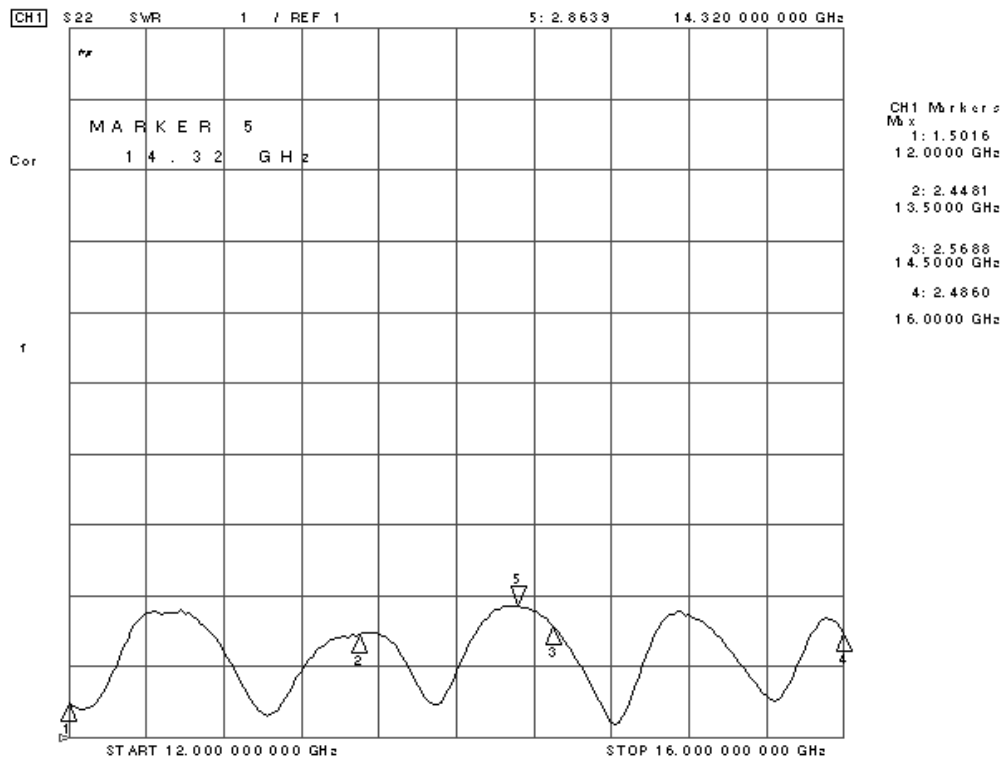


3. VSWR

Horizontal polarization:



Vertical polarization:



4. Pattern

