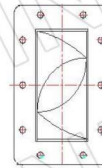
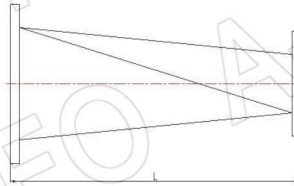
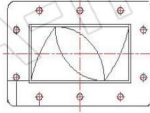


### 4. Twist WG - Rectangular



P/N	Freq. (GHz)	VSWR Max	EIA WR	Length (mm)	Flange	Mat.	N.W.
430WTA-800	1.7-2.6	1.10	WR430	800	FDP22(UDR22)	Al	1.46
340WTA-500	2.2-3.3	1.10	WR340	500	FDP26(UDR26)	Al	1.18
229WTA-250_Cu	3.3-4.9	1.10	WR229	250	FDP40(UDR40)	Cu	1.25
187WTA-200	3.95-5.85	1.10	WR187	200	FDP48(UDR48)	Al	0.30
159WTA-200	4.9-7.05	1.10	WR159	200	FDP58(UDR58)	Al	0.30
137WTA-150L	5.85-8.2	1.10	WR137	150	FDP70(UDR70)	Al	0.16
112WTA-120	7.05-10	1.10	WR112	120	FBP84(UBR84)	Al	0.07
90WTA-100	8.2-12.4	1.10	WR90	100	FBP100(UBR100)	Al	0.06
75WTA-100_Cu	10-15	1.10	WR75	100	FBP120(UBR120)	Cu	0.16
75WTA-120_Cu_BPBM	10-15	1.10	WR75	120	FBP120(UBR120)	Cu	0.16
62WTA-75_Cu_BMBM	12.4-18	1.10	WR62	75	FBM140(PBR140)	Cu	0.10
51WTA-70_Cu	15-22	1.10	WR51	70	FBP180(UBR180)	Cu	0.10
42WTA-60_Cu	18-26.5	1.10	WR42	60	FBP220(UBR220)	Cu	0.04
34WTA-55_Cu	22-33	1.10	WR34	55	FBP260(UBR260)	Cu	0.04
28WTA-55_Cu	26.5-40	1.10	WR28	55	FBP320(UBR320)	Cu	0.06
22WTAS-25.4_Cu	33-50	1.10	WR22	25.4	FUGP400(UG-383/U)	Cu	0.07
22WTAS-50_Cu	33-50	1.10	WR22	50	FUGP400(UG-383/U)	Cu	0.11
22WTA-50_Cu	33-50	1.10	WR22	50	FUGP400(UG-383/U)	Cu	0.04
19WTAS-25.4_Cu	40-60	1.10	WR19	25.4	FUGP500(UG-383/U-M)	Cu	0.07
19WTAS-50_Cu	40-60	1.10	WR19	50	FUGP500(UG-383/U-M)	Cu	0.11
15WTAS-25.4_Cu	50-75	1.10	WR15	25.4	FUGP620(UG-385/U)	Cu	0.03
15WTAS-50_Cu	50-75	1.10	WR15	50	FUGP620(UG-385/U)	Cu	0.05
15WTA-50_Cu	50-75	1.10	WR15	50	FUGP620(UG-385/U)	Cu	0.02



P/N	Freq. (GHz)	VSWR Max	EIA WR	Length (mm)	Flange	Mat.	N.W.
12WTAS-50_Cu	60-90	1.10	WR12	50	FUGP740(UG-387/U)	Cu	-
12WTAS-25.4_Cu	60-90	1.10	WR12	25.4	FUGP740(UG-387/U)	Cu	-
12WTA-50_Cu	60-90	1.10	WR12	50	FUGP740(UG-387/U)	Cu	-
12WTA-25.4_Cu	60-90	1.10	WR12	25.4	FUGP740(UG-387/U)	Cu	0.02
10WTAS-25.4_Cu	75-110	1.15	WR10	25.4	FUGP900(UG-387/U-M)	Cu	0.03
10WTAS-50_Cu	75-110	1.15	WR10	50	FUGP900(UG-387/U-M)	Cu	0.05
10WTA-50_Cu	75-110	1.15	WR10	50	FUGP900(UG-387/U-M)	Cu	0.02
8WTAS-25.4_Cu	90-140	1.15	WR8	25.4	UG-387/U-M	Cu	0.03
6WTAS-25.4_Cu	110-170	1.15	WR6	25.4	UG-387/U-M	Cu	0.03
5WTAS-25.4_Cu	140-220	1.15	WR5	25.4	UG-387/U-M	Cu	0.03
4WTAS-25.4_Cu	170-260	1.15	WR4	25.4	UG-387/U-M	Cu	0.03
3WTAS-25.4_Cu	220-325	1.15	WR3	25.4	UG-387/U-M	Cu	0.03
12WTAS-50_Cu	60-90	1.10	WR12	50	FUGP740(UG-387/U)	Cu	-
12WTAS-25.4_Cu	60-90	1.10	WR12	25.4	FUGP740(UG-387/U)	Cu	-
12WTA-50_Cu	60-90	1.10	WR12	50	FUGP740(UG-387/U)	Cu	-
12WTA-25.4_Cu	60-90	1.10	WR12	25.4	FUGP740(UG-387/U)	Cu	0.02
10WTAS-25.4_Cu	75-110	1.15	WR10	25.4	FUGP900(UG-387/U-M)	Cu	0.03
10WTAS-50_Cu	75-110	1.15	WR10	50	FUGP900(UG-387/U-M)	Cu	0.05
10WTA-50_Cu	75-110	1.15	WR10	50	FUGP900(UG-387/U-M)	Cu	0.02
8WTAS-25.4_Cu	90-140	1.15	WR8	25.4	UG-387/U-M	Cu	0.03
6WTAS-25.4_Cu	110-170	1.15	WR6	25.4	UG-387/U-M	Cu	0.03
5WTAS-25.4_Cu	140-220	1.15	WR5	25.4	UG-387/U-M	Cu	0.03
4WTAS-25.4_Cu	170-260	1.15	WR4	25.4	UG-387/U-M	Cu	0.03
3WTAS-25.4_Cu	220-325	1.15	WR3	25.4	UG-387/U-M	Cu	0.03

