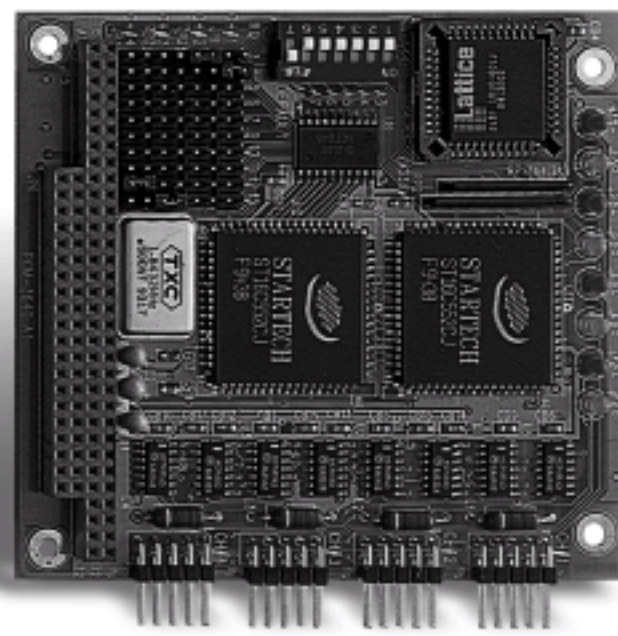


# PCM-3640

The Power That Solves  
PC/104 4 RS-232 COM Port Module



## Specifications

Channel	RS-232 ports x 4
Baud Rate	50 ~ 115,200 bps
Character Length	5,6,7 or 8 bits
Parity	Even, odd or none
Stop Bit	1, 1.5 or 2
Interrupt Level	IRQ 3,4,5,6,7,9,10,11,12 or 15
I/O Connector	Dual male DB-9
Power Consumption	+5V@220mA (typical)
Operating Temperature	32°F ~ 140°F (0°C ~ 60°C)

## Ordering Information

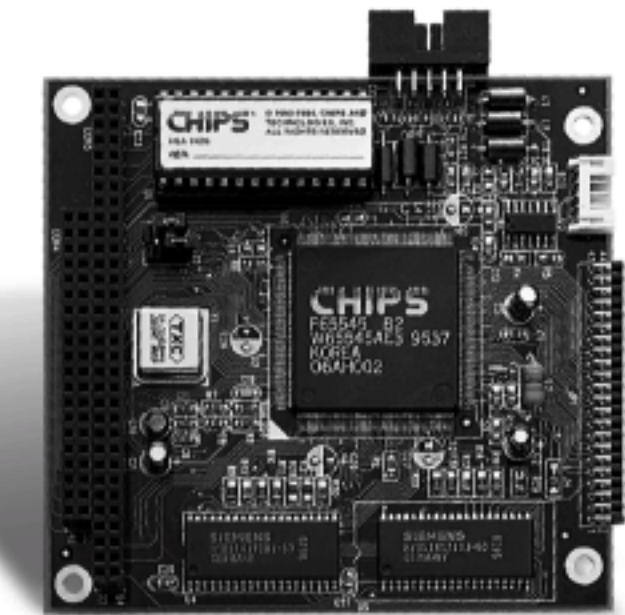
- **PCM-3640**  
PC/104 4-port RS-232 Module

## Features

- Four RS-232 ports onboard
- Full duplex serial communication
- Jumper-selectable interrupt level

# PCM-3521

PC/104 VGA Module



## Specifications

VGA Chip	C & T 65545
LCD Interface	Support 12/18/24 bit LCD
Resolutions	up to 1024 x 768 for LCD up to 1280 x 1024 for CRT
Other	Supports LCD & CRT simultaneous display True-color and Hi-color display capability with LCD and CRT up to 640x480 resolution
Operating Temperature	32°F ~ 140°F (0°C ~ 60°C)

## Ordering Information

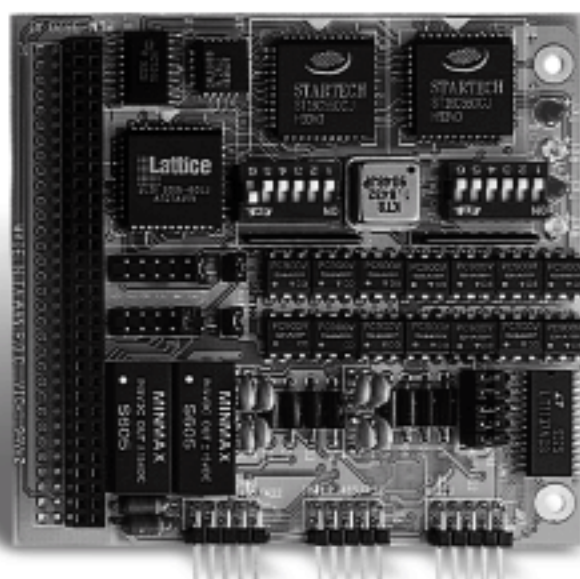
- **PCM-3521B1**  
PC/104 VGA Module

## Features

- PC/104 Interface
- C&T 65545 VGA chip
- 1024KB Video RAM
- Supports CRT and TTL MONO/DSTN/TFT LCD

# PCM-3610

PC/104 Isolated RS-232/422/485 Module



## Specifications

Channel 1	RS-232/422/485
Channel 2	RS-422/485
Baud Rate	50-115,200 bps
Character Length	5,6,7 or 8 bits
Parity	Even, odd or none
Stop Bit	1, 1.5 or 2
Interrupt Level	IRQ 3,4,5,6,7,9
I/O Connector	Dual male DB-9
Power Requirement	+5V, ±5% tolerance on power supply
Power Consumption	+5V@400mA (typical)
Isolation	1000Vdc
Operating Temperature	32°F ~ 140°F (0°C ~ 60°C)

## Ordering Information

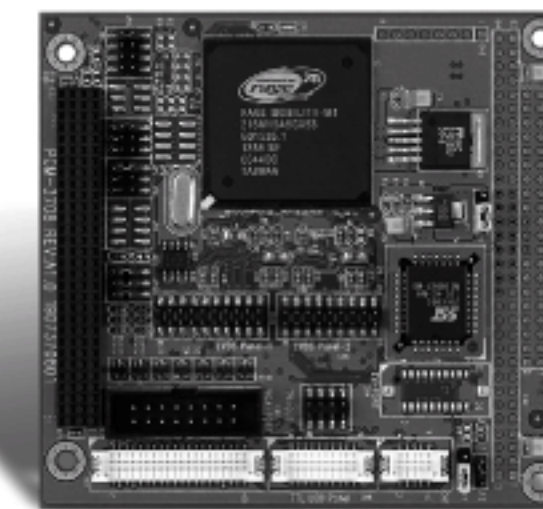
- **PCM-3610**  
PC/104 Isolated RS-232/422/485 Module

## Features

- High-speed transmission rate
- Automatic RS-485 data flow control
- Jumper-selectable interrupt level
- Supports Windows 95/98/ME/NT/2000/XP, Linux

# PCM-3708

PCI-104 VGA Module with TV-Out



## Specifications

VGA Chip	ATI RAGE MOBILITY M1
Core Speed	Graphics Clock 125MHz
Interface	PCI 2.1 Compliant
Resolutions	up to 1600 x 1200 for 2D up to 1280 x 1024 for 3D
LCD Interface	18/24/36/48 bit TTL LCD Dual Channel LVDS
TV-Out	Supports NTSC/PAL TV output
3D Display	Supports Microsoft DirectX 6 and OpenGL 1.2.1
Operating Temperature	32°F ~ 140°F (0°C ~ 60°C)

## Ordering Information

- **PCM-3708-A10**  
PCI-104 VGA Module

## Features

- PCI-104 Interface
- ATI RAGE MOBILITY M1 VGA chip
- Built-in 8MB Video RAM
- Supports CRT and TTL/LVDS LCD
- Supports TV-Out

- 1 Compact Board
- 2 Sub Compact Board
- 3 Full-Size CPU Card
- 4 Half-Size CPU Card
- 5 Media PC
- 6 Embedded ATX Board
- 7 PC/104 Module
- 8 Display Monitor
- 9 Panel PC
- 10 Operator Panel
- 11 LCD PC
- 12 Workstation
- 13 Embedded Control PC
- 14 IPC Solution
- 15 Accessory