



SLO1268

12.1" Open Frame TFT LCD Display, LED Backlight, 1600nits,XGA(1024x768)

12.1" open frame TFT LCD panel, built-in 1600 nits high bright for sunlight readable LCD display, high transmittance color filter, high transmission polarizing plates, Low Power Consumption, suitable for kiosk, advertising, POS, marine, transportation, gaming, studio display, gas pump.

Key Features

- Ultra High Brightness
- LED Backlight
- High Shock & Vibration Resistance
- Low Power Consumption
- High Uniformity
- Low EMI Noise
- Wide Dimming
- Life Expectancy
- Smart Panel design. The thickness is only 36.7mm



Specifications

Preliminary

Model No.	SLO1268
Description	12.1" TFT LCD, LED Backlight 1600nits,SXGA(1024x768)
Display Area (mm)	245.76(H) x 184.32(V) mm
Brightness	1600 cd/m ²
Resolution	1024x768 (XGA)
Contrast Ratio	700 : 1
Pixel Pitch (mm)	0.24(H) x 0.24(V)
Viewing Angle	+80°~ -80°(H), +80°~ -80°(V)
Display Colors	262K/16.2M
Response Time (Typical)	35ms
Power Consumption	17W
Dimensions (mm)	293.6x205.6x36.7mm
Weight (Net)	TBD
LED Driving Board	LID12
Control Board (Optional)	<input type="checkbox"/> AD5621GA <input type="checkbox"/> AD5621GD <input type="checkbox"/> AD5766GDVA <input type="checkbox"/> AD2662GDVAR
<input type="checkbox"/> AD5621GA	VGA+Audio
<input type="checkbox"/> AD5621GD	VGA+DVI
<input type="checkbox"/> AD5766GDVA	VGA+CVBS+S-Video+Audio (Optional DVI / Component)
<input type="checkbox"/> AD2662GDVAR	VGA+DVI (Optional S-Video/ Component / Audio)
F / R Control Button	<input type="checkbox"/> 5 Key <input type="checkbox"/> 4 Key
<input type="checkbox"/> 5 Key	Power Switch, Menu, Select (+,-), Auto
<input type="checkbox"/> 4 Key	Power Switch, Menu, Select (+,-),
OSD Menu	Brightness, Contrast, H/V Position, Color, Phase, Clock...
Optional	<input type="checkbox"/> AOT <input type="checkbox"/> Touch Screen

Specifications are subject to change without notice.

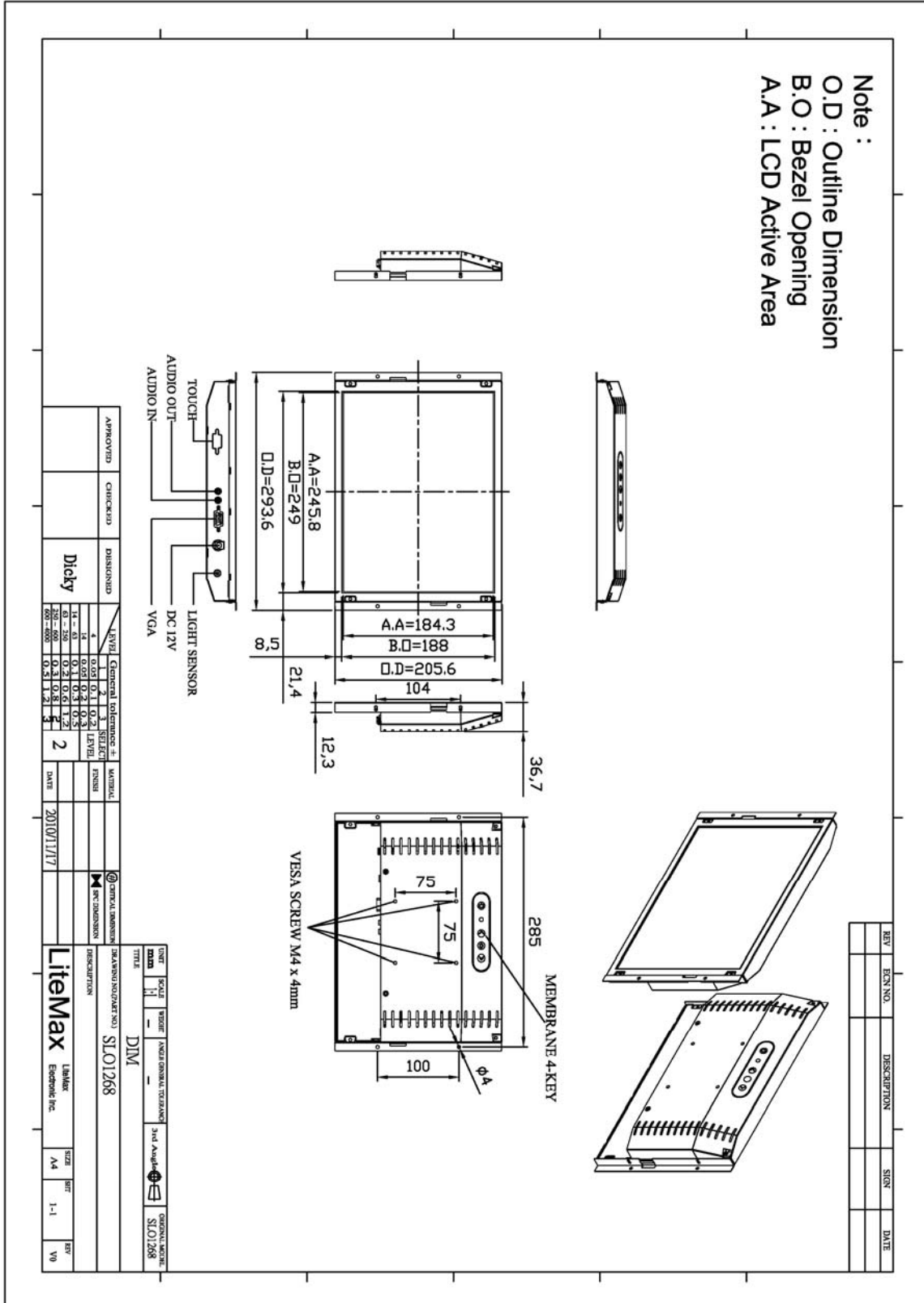
All brands or product names are trademarks or registered trademarks of their respective companies.



Mechanical Drawing

Outline Dimensions

Unit:mm



**Ordering Information**

Part Number	Description
SLO1268-ENB-A01	12.1",1600nits,XGA,LID12.AD5621G,O/B,V01(2 in 1)
SLO1268-ENB-C01	12.1",1600nits,XGA,LID12.AD5766GDVA,O/B,V01(2 in 1)

Optional Accessories

Part Number	Description
840612051100	ADAPTER.12V.5A.60W.EA1050A,P
810618301010	CABLE.POWER.AC.1830mm USA type
810618301090	CABLE,POWER,AC,1830mm Europe type
810618301050	CABLE.POWER.AC.1830mm UK type
810618301170	CABLE.POWER,AC,1830mm Australia type
810618301030	CABLE.POWER.AC.1830mm Japan type