



SLO1315

13.3" Wide TFT LCD, LED Backlight 1000nits,WXGA

13.3" TFT LCD panel, built-in 1000 nits high bright for sunlight readable LCD display, high transmittance color filter, high transmission polarizing plates, Low Power Consumption, suitable for kiosk, advertising, POS, marine, transportation, gaming, studio display, gas pump.

Key Features

- Sunlight Readable
- LED Backlight
- High Shock & Vibration Resistance
- Low Power Consumption
- Wide Operation Temperature. (-20°C ~ 70°C)
- High Uniformity (90%)
- Low EMI Noise
- Wide Dimming
- Life Expectancy (70,000hrs)

Applications

Marline, Military,
Medical, Transportation
Industrial



Specifications

V1

Model No.	SLO1315
Description	13.3" Wide TFT LCD, LED Backlight 1000nits,WXGA
Display Area (mm)	286.08 x 178.8mm
Brightness	1000 cd/m ²
Resolution	1280 x 800 (WXGA)
Contrast Ratio	800 : 1
Pixel Pitch (mm)	0.2235(H) x 0.2235(V)
Viewing Angle	+70°~-70°(H), +60°~-60°(V)
Display Colors	262K
Response Time (Typical)	16ms
Sync	LVDS
Power Consumption	19W
Dimensions (mm)	343.6x270.8x55
Weight (Net)	2.5kg
LED Driving Board	LID 13A02
Control Board (Optional)	<input type="checkbox"/> AD5621GA <input type="checkbox"/> AD5621GD <input type="checkbox"/> AD5766GDVA <input type="checkbox"/> AD2662GDVAR
<input type="checkbox"/> AD5621GA	VGA+Audio
<input type="checkbox"/> AD5621GD	VGA+DVI
<input type="checkbox"/> AD5766GDVA	VGA+CVBS+S-Video+Audio (Optional DVI / Component)
<input type="checkbox"/> AD2662GDVAR	VGA+DVI (Optional S-Video/ Component / Audio)
F / R Control Button	<input type="checkbox"/> 5 Key <input type="checkbox"/> 4 Key
<input type="checkbox"/> 5 Key	Power Switch, Menu, Select (+,-), Auto
<input type="checkbox"/> 4 Key	Power Switch, Menu, Select (+,-),
OSD Menu	Brightness, Contrast, H/V Position, Color, Phase, Clock...
Optional	<input type="checkbox"/> AOT <input type="checkbox"/> Touch Screen

Specifications are subject to change without notice.

All brands or product names are trademarks or registered trademarks of their respective companies.

DLF= Panel+LED Driving Board

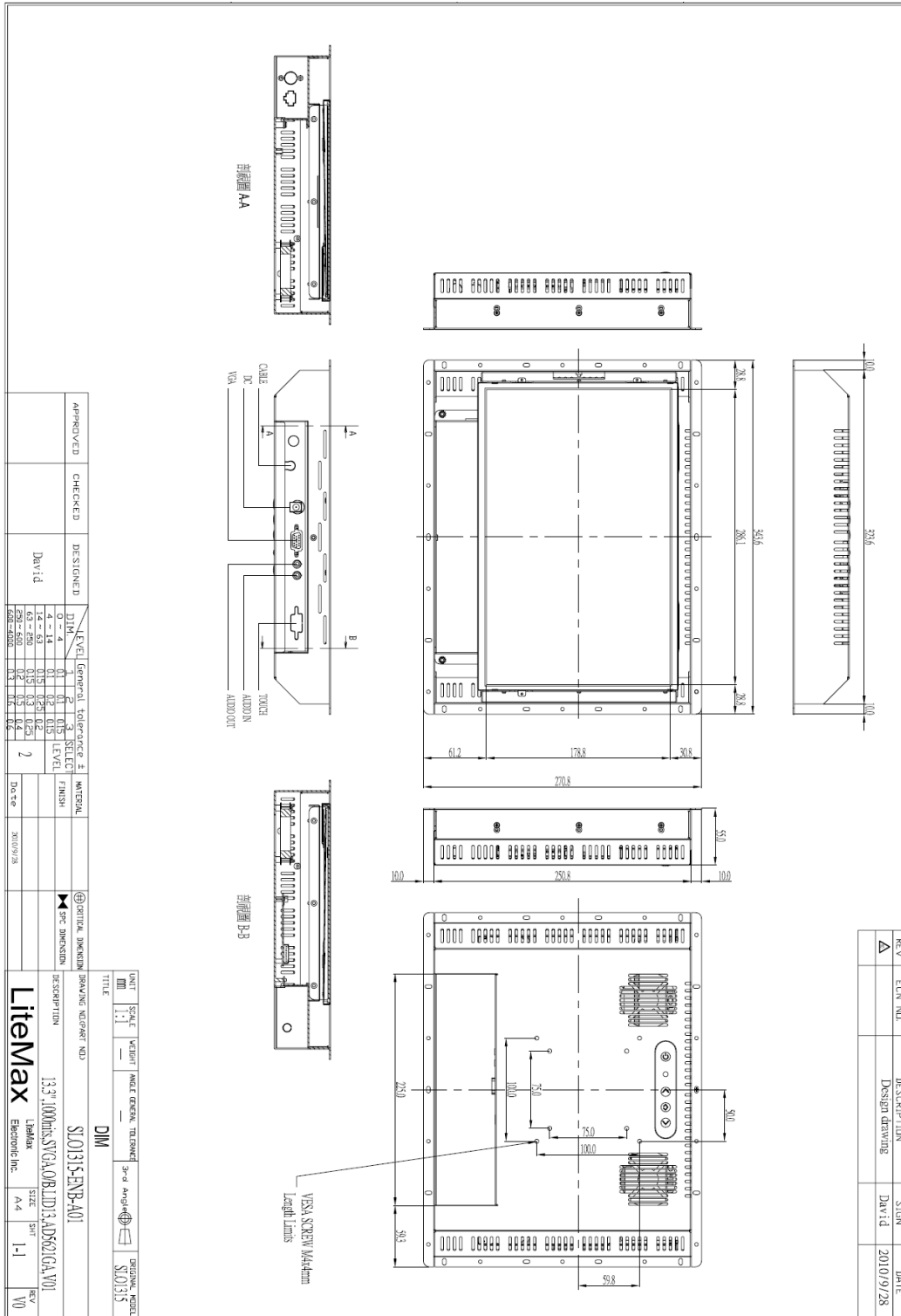


DLH= Panel+LED Driving Board+Control Board

Mechanical Drawing

Outline Dimensions

Unit:mm



REV	ECON	MD	DESCRIPTION	SIGN	DATE
1			Design drawing	DAVID	2010/9/28

APPROVED	CHECKED	DESIGNED	DATE
		David	2010/9/28

LEVEL	General Tolerances	Surface Finish
0 - 4	0.1	0.15
4 - 14	0.1	0.2
14 - 50	0.15	0.2
50 - 650	0.2	0.5
650 - 2000	0.3	0.6

UNIT	SCALE	VELOCITY	ANGLE	GENERAL TOLERANCE	3rd Angle Projection	DESIGNING MODEL
mm	1:1					SLO1315

TITLE	DESCRIPTION	DATE	SIZE	SHEET	REV
DM	SLO1315-ENB-A01		A4	1-1	V0
Litemax Electronic Inc.					

**Ordering Information**

Part Number	Description
SLO1315-ENB-A01	13.3",1000nits,WXGA,O/B.LID13,AD5621GA,V01

Optional Accessories

Part Number	Description
840612051100	ADAPTER.12V.5A.60W.EA1050A,P
810618301010	CABLE.POWER.AC.1830mm USA type
810618301090	CABLE,POWER,AC,1830mm Europe type
810618301050	CABLE.POWER.AC.1830mm UK type
810618301170	CABLE.POWER,AC,1830mm Australia type
810618301030	CABLE.POWER.AC.1830mm Japan type