



SLO1825

18.5" Wide TFT LCD, LED Backlight 1000nits, WXGA

18.5" Wide open frame TFT LCD panel, built-in 1000 nits high bright for sunlight readable LCD display, high transmittance color filter, high transmission polarizing plates, Low Power Consumption, suitable for kiosk, advertising, POS, transportation, gaming, studio display, gas pump.

Key Features

- Sunlight Readable
- LED Backlight
- High Shock & Vibration Resistance
- Low Power Consumption
- High Uniformity
- Low EMI Noise
- Wide Dimming



Specifications

V1

Model No.	SLO1825
Description	18.5" Wide open frame TFT LCD, LED Backlight 1000nits, WXGA
Display Area (mm)	409.8(h) x 230.4(v) mm
Brightness	1000 cd/m ²
Resolution	1366x768 (WXGA)
Contrast Ratio	1000 : 1
Pixel Pitch (mm)	0.3(H) x 0.3(V)
Viewing Angle	+85°~ -85°(H), +80°~ -80°(V)
Display Colors	16.7M
Response Time (Typical)	5ms
Sync	LVDS
Power Consumption	24W
Dimensions (mm)	475x330x60
Weight (Net)	4Kg
LED Driving Board	LID 18A05
Control Board (Optional)	<input type="checkbox"/> AD5621GA <input type="checkbox"/> AD5621GD <input type="checkbox"/> AD5766GDVA <input type="checkbox"/> AD2662GDVAR
<input type="checkbox"/> AD5621GA	VGA+Audio
<input type="checkbox"/> AD5621GD	VGA+DVI
<input type="checkbox"/> AD5766GDVA	VGA+CVBS+S-Video+Audio (Optional DVI)
<input type="checkbox"/> AD2662GDVAR	VGA+DVI (Optional S-Video/ Component / Audio)
F / R Control Button	<input type="checkbox"/> 5 Key <input type="checkbox"/> 4 Key
<input type="checkbox"/> 5 Key	Power Switch, Menu, Select (+,-), Auto
<input type="checkbox"/> 4 Key	Power Switch, Menu, Select (+,-),
OSD Menu	Brightness, Contrast, H/V Position, Color, Phase, Clock...
Optional	<input type="checkbox"/> AOT <input type="checkbox"/> Touch Screen

Specifications are subject to change without notice.

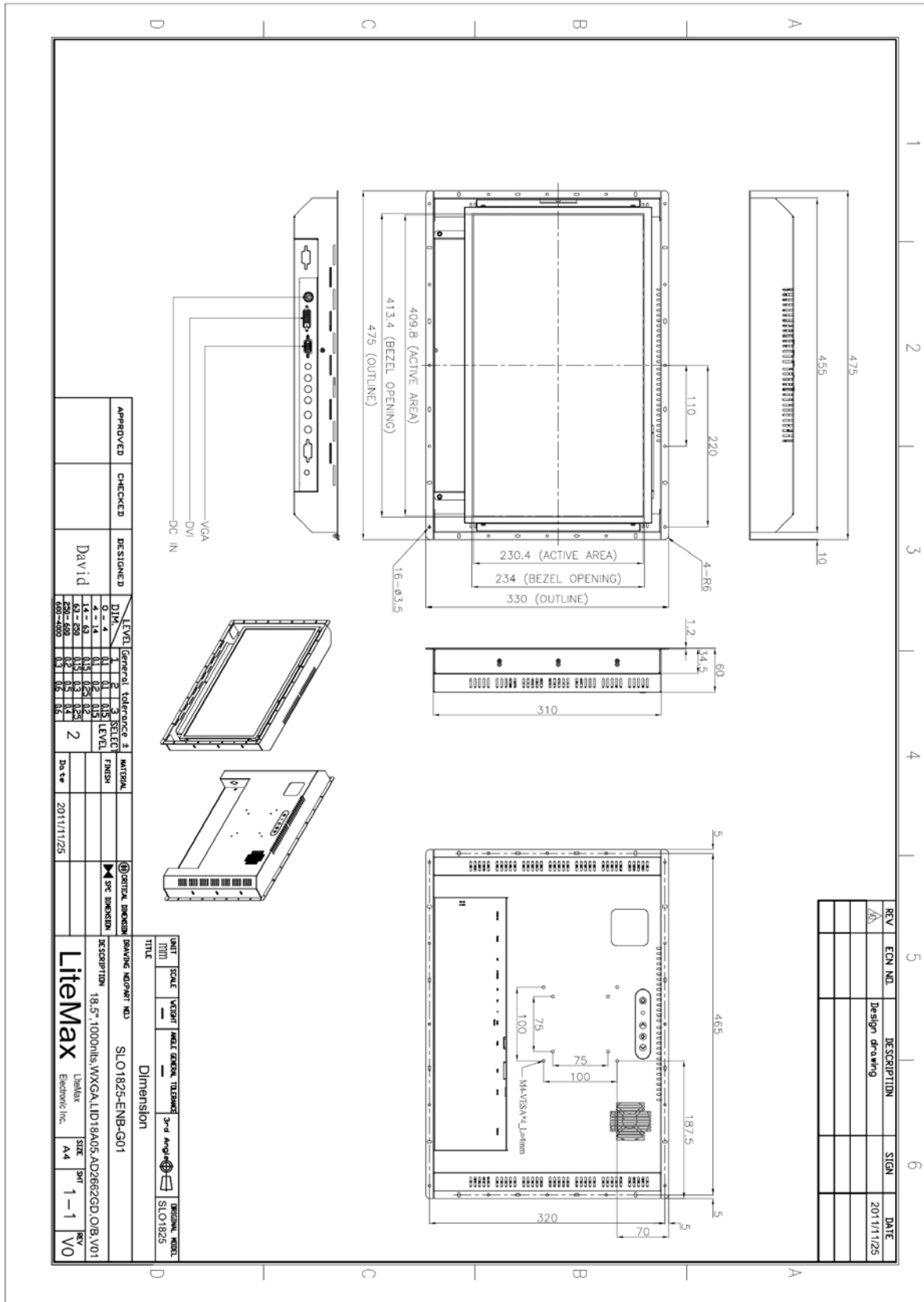
All brands or product names are trademarks or registered trademarks of their respective companies.



Mechanical Drawing

Outline Dimensions

Unit:mm



APPROVED	CHECKED	DESIGNED	DATE
		David	2011/11/25

LEVEL	Tolerance	SELECT	LEVEL
1	±0.1	1	1
2	±0.15	2	2
3	±0.2	3	3
4	±0.25	4	4
5	±0.3	5	5
6	±0.4	6	6
7	±0.5	7	7
8	±0.6	8	8
9	±0.8	9	9
10	±1.0	10	10

UNIT	SCALE	WEIGHT	HAZ. GREEN	TOLERANCE	3rd Angle	ORIGINAL	REVISION
MM	1:1						

REV	ECN NO.	DESCRIPTION	SIGN	DATE
1		Design drawing		2011/11/25



Ordering Information

Part Number	Description
SLO1825-ENB-G01	18.5",1000nits,WXGA,LID18A05.AD2662GD,O/B,V01

Optional Accessories

Part Number	Description
840612051100	ADAPTER.12V.5A.60W.EA1050A,P
810618301010	CABLE.POWER.AC.1830mm USA type
810618301090	CABLE,POWER,AC,1830mm Europe type
810618301050	CABLE.POWER.AC.1830mm UK type
810618301170	CABLE.POWER,AC,1830mm Australia type
810618301030	CABLE.POWER.AC.1830mm Japan type