



STD2922 is Litemax innovative market-leading transparency LCD Display 29.3" Transparency LCD Display, 1366x512 ultra wide aspect ratio 16:6

STD2922 is an innovative transparency, LED backlight LCD display. It provides LCD panel with specific ratios for digital signage, exhibition hall, and department store. Incorporating with A.D. control board and backlight design, it has large space can demo product and display high-quality image.

Key Features

- Transparency LCD Display
- Brightness 350 nits
- Ultra Wide Screen (16 :6)
- LED Backlight
- Large Show Case
- Easy and simple magnetic frame cover is can be changed color.



Specifications

Preliminary

Model No.	STD2922
Description	29.3" Resizing LCD, 350 nits LED backlight, 1366x512
Display Area	697.7 x 261.4 mm
Brightness	350 cd/m ²
Resolution	1366 x 512
Aspect Ratio	16 : 6
Contrast Ratio	2500:1
Pixel Pitch (mm)	0.51075 x 0.51075
Viewing Angle	176°(H), 176°(V)
Display Colors	16.7M
Response Time (Typical)	6.5 ms
Sync	LVDS
Power Consumption	71W
Dimensions (mm)	802.2(H) x 323.9(W) x 271.6(D)
Certification	CE/FCC
Weight (Net)	10.9Kg
LED Driving Board	LID29A02
Control Board (Optional)	AD2662GDHM
<input type="checkbox"/> AD2622GDH	VGA + DVI + HDMI
<input type="checkbox"/> Others	
F / R Control Button	5 Key / 4 Key
<input type="checkbox"/> 4 Key	Power Switch, Menu, Select (+,-),
OSD Menu	Brightness, Contrast, H/V Position, Color, Phase, Clock...
Optional	<input type="checkbox"/> Touch Screen

Specifications are subject to change without notice.

All brands or product names are trademarks or registered trademarks of their respective companies.

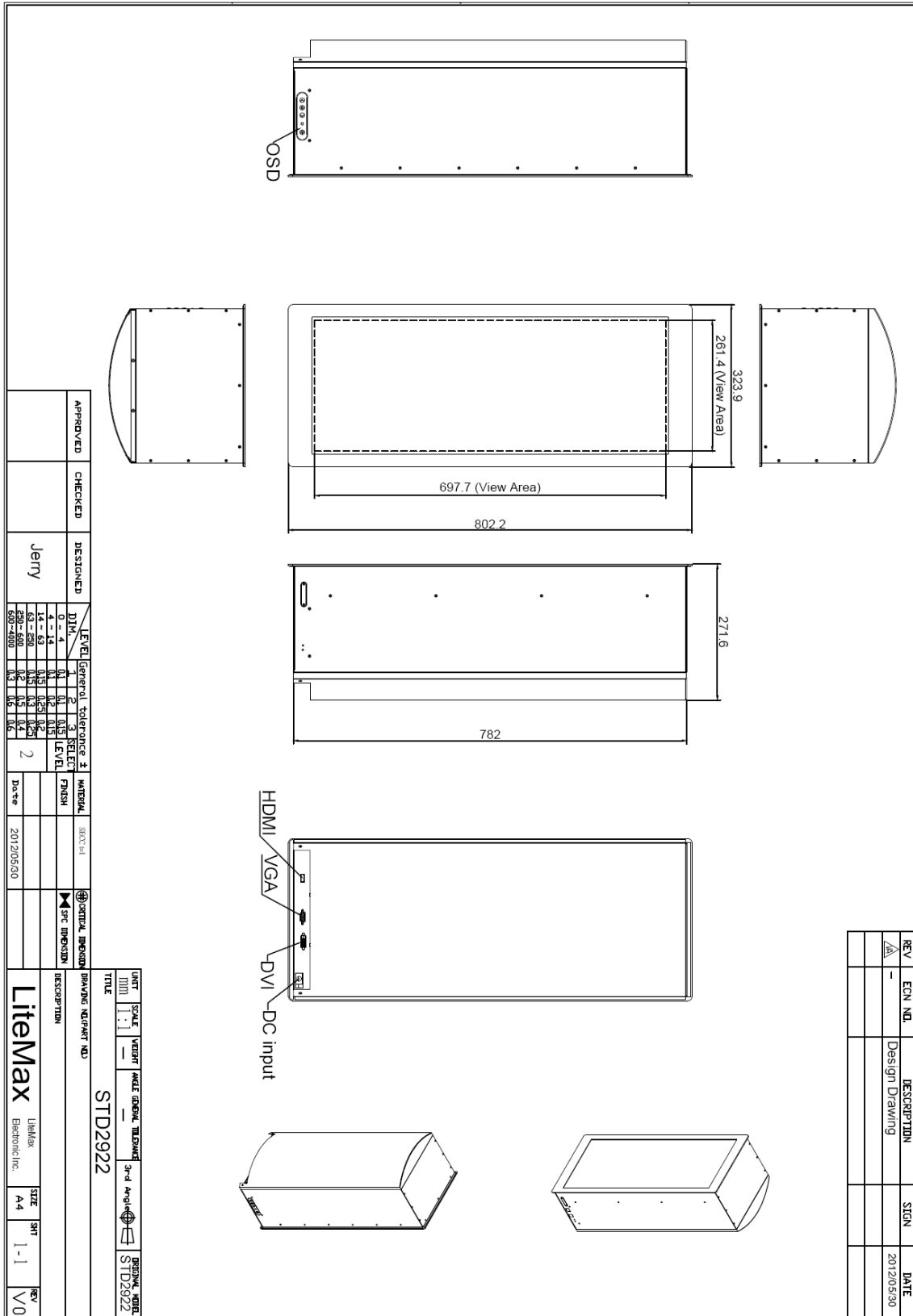
STD= Panel+ LED Driving Board + Control Board



Mechanical Drawing

Outline Dimensions

Unit: mm





Ordering Information

Model Name	Description
STD2922-EAR-G01	29.3",350nits,1366*512,LID29,Acrylic,AD2662GDH,O/R, DC 12V input,V1

Optional Accessories

Part Number	Description
840612111200	ADAPTER.12V.10A.120W.PAC120F.DC POWER DIN,P
810618301010 (Optional)	CABLE.POWER.AC.1830mm.(US Type).3PIN PLUG TO SOCKET.SVT(SPT-2)18AWG 3C BLACK,P
810618301090 (Optional)	CABLE,POWER,AC,1830mm.(EU Type) 3PIN PLUG TO.SOCKET,H05VV-F 3G.0.75MMSQ BLACK,P
810618301050 (Optional)	CABLE,POWER,AC,1830mm.UK(FUSE) 3PIN PLUG TO.SOCKET,H05VV-F 3C(3G) 0.75MMSQ BLACK,P
810618301170 (Optional)	CABLE.POWER,AC,1830mm. (AU Type) 3PIN PLUG TO 2P SOCKET.LTSA 0.75MMSQ BLACK,P
810618301030 (Optional)	CABLE.POWER.AC.1830mm.(JP Type).2PIN PLUG Y TERMINAL TO. SOCKET.VCTF 3C 0.75MMSQ BLACK,P