



STD1713 is Litemax innovative market-leading transparency LCD Display 17.2" Transparency LCD Display, 1366x512 ultra wide aspect ratio 16:6

STD1713 is an innovative transparency, LED backlight LCD display. It provides LCD panel with specific ratios for digital signage, exhibition hall, and department store. Incorporating with A.D. control board and backlight design, it has large space can demo product and display high-quality image.

Key Features

- Transparency LCD Display
- Brightness 500 nits
- Ultra Wide Screen (16 :6)
- LED Backlight
- Large Show Case
- Easy and simple magnetic frame cover is can be changed color



Specifications

Preliminary

Model No.	STD1713
Description	17.2" Resizing LCD, 500 nits LED backlight, 1366x512
Display Area	411.2 x 154.7 mm
Brightness	500 cd/m ²
Resolution	1366 x 512
Aspect Ratio	16 : 6
Contrast Ratio	1000:1
Pixel Pitch (mm)	0.3 x 0.3
Viewing Angle	170°(H), 160°(V)
Display Colors	16.7M
Response Time (Typical)	3.7 ms
Sync	LVDS
Power Consumption	35W
Dimensions (mm)	432.9(H) x 179.9(W) x 224.5(D)
Certification	CE/FCC
Weight (Net)	5.2Kg
LED Driving Board	LID17A07
Control Board (Optional)	AD2662GDHM
<input type="checkbox"/> AD2622GDH	VGA + DVI + HDMI
<input type="checkbox"/> Others	
F / R Control Button	4 Key
<input type="checkbox"/> 4 Key	Power Switch, Menu, Select (+,-),
OSD Menu	Brightness, Contrast, H/V Position, Color, Phase, Clock...
Optional	<input type="checkbox"/> Touch Screen

Specifications are subject to change without notice.

All brands or product names are trademarks or registered trademarks of their respective companies.

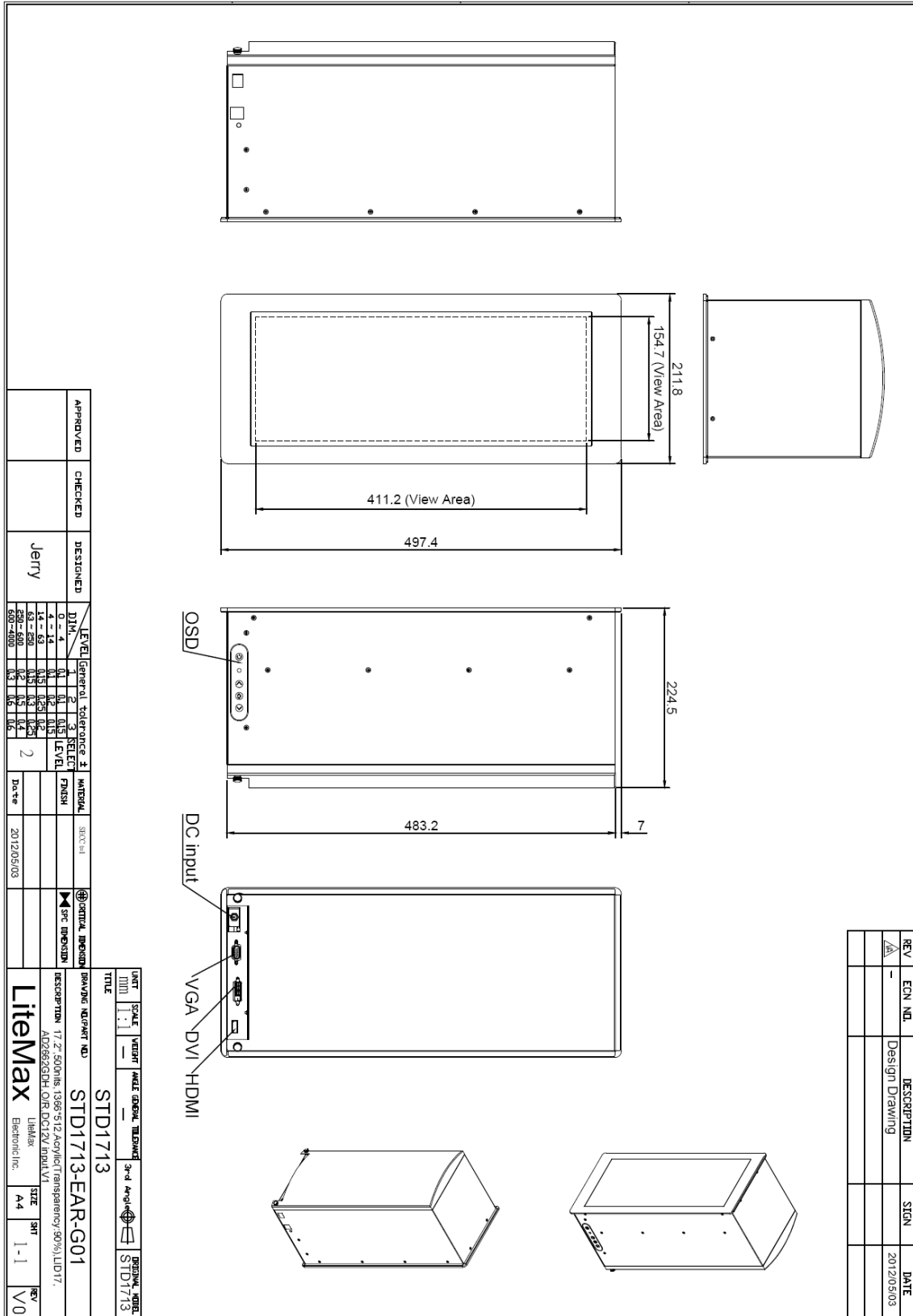
STD= Panel+ LED Driving Board + Control Board



Mechanical Drawing

Outline Dimensions

Unit: mm





Ordering Information

Model Name	Description
STD1713-EAR-G01	17.2",500nits,1366*512,Acrylic.(Transparency:90%),LID17.AD2662GDH,O/R,DC 12V input.V1

Optional Accessories

Part Number	Description
840612031100	ADAPTER.12V.3.33A.40W,PAA040F,P
810618301010 (Optional)	CABLE.POWER.AC.1830mm.(US Type).3PIN PLUG TO SOCKET.SVT(SPT-2)18AWG 3C BLACK,P
810618301090 (Optional)	CABLE,POWER,AC,1830mm.(EU Type) 3PIN PLUG TO.SOCKET,H05VV-F 3G.0.75MMSQ BLACK,P
810618301050 (Optional)	CABLE,POWER,AC,1830mm.UK(FUSE) 3PIN PLUG TO.SOCKET,H05VV-F 3C(3G) 0.75MMSQ BLACK,P
810618301170 (Optional)	CABLE.POWER,AC,1830mm. (AU Type) 3PIN PLUG TO 2P SOCKET.LTSA 0.75MMSQ BLACK,P
810618301030 (Optional)	CABLE.POWER.AC.1830mm.(JP Type).2PIN PLUG Y TERMINAL TO. SOCKET.VCTF 3C 0.75MMSQ BLACK,P