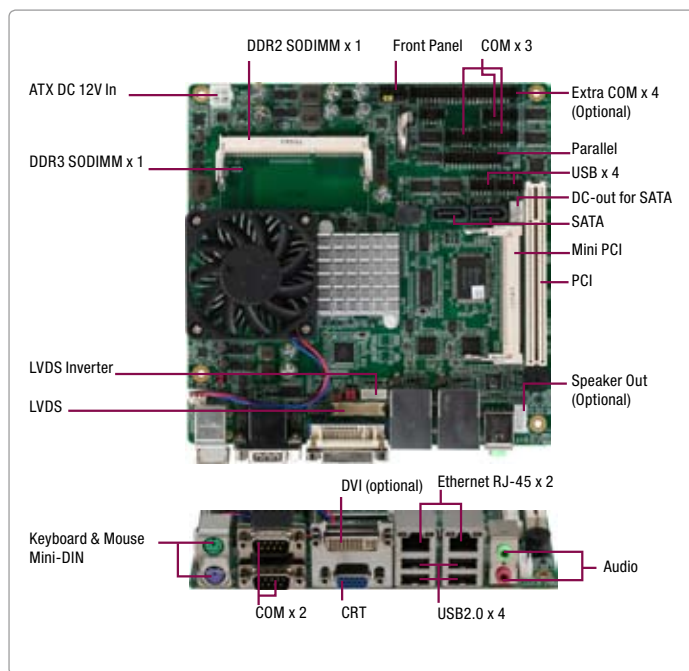


# EMB-LN9T Rev. B

Embedded Motherboard with Intel® Atom™ N455/D525 Processor



## Features

- Onboard Intel® Atom™ N455/D525 Processor
- Intel® ICH8M
- DDR3 667/800 SODIMM x 2, Max. 4GB (N455 Supports up to DDR3 667)
- Dual Ethernet (Gigabit) or 10/100Base-TX x 2
- VGA, 18-bit Single Channel LVDS or 24-bit Single Channel LVDS or DVI
- SATA 1.5Gb/s x 2, CompactFlash™ x 1
- USB2.0 x 8, COM x 9, LPT x 1
- PCI x 1, Mini PCI x 1, Mini Card x 1
- DC 12V
- Optional: TPM, Extra COM x 4 (Total 9 COM), SPDIF, RAID 0 & 1



## Specifications

System	
Form Factor	Mini-ITX
Processor	Onboard Intel® Atom™ N455/D525 Processor
System Memory	204-pin DDR3 (667/800) SODIMM x 2, Max. 4GB (N455 supports DDR 3 667)
Chipset	Intel® ICH8M
I/O Chipset	Winbond W83627UHG
Ethernet	Realtek 8102E for 10/100Base-TX (or RTL8111C for 10/100/1000Base-TX), RJ-45 x 2
BIOS	AMI Plug & Play SPI BIOS - 4MB ROM
Wake on LAN	Yes
Watchdog Timer	Generates a time-out system reset
H/W Status Monitoring	Supports power supply voltages and temperature monitoring
Expansion Interface	PCI x 1, Mini PCI x 1, Mini Card x 1
Battery	Lithium battery
Power Requirement	DC-12V
Power Consumption (Typical)	Intel® Atom™ D525 1.8GHz, DDR3 1333 2GB 1.4A@+12V
Board Size	6.7" (L) x 6.7" (W) (170mm x 170mm)
Gross Weight	1.1 lb (0.5kg)
Operating Temperature	32°F ~ 140°F (0°C ~ 60°C)
Storage Temperature	-40°F ~ 176°F (-40°C ~ 80°C)
Operating Humidity	0% ~ 90% relative humidity, non-condensing
MTBF (Hours)	60,000
Display	
	Supports CRT/LCD, CRT/DVI simultaneous/ dual view display
Chipset	Intel® Atom™ N455/ D525 integrated Integrates hardware MPEG2 decoder
Memory	Shared system memory up to 384 MB/ DVMT 4.0
Resolution	Up to 2048 x 1536 (QXGA) @ 60 Hz for CRT (D525) Up to 1400 x 1050 (SXGA) @ 60 Hz for CRT (N455) Up to 1366 x 768 or 1280 x 800 (WXGA) for LCD & DVI
LCD Interface	18-bit single channel or 24-bit single channel
Video Interface	VGA, DVI-D
I/O	
Storage	SATA x 2, CompactFlash™ x 1
Serial Port	RS-232 x 8, RS-232/422/485 x 1
Parallel Port	SPP/EPP/ECP mode
USB	USB2.0 x 8
Digital I/O	Supports 8-bit (Programmable)
PS/2 Port	Keyboard + Mouse x 1
Audio	Line-out, Mic-in, Amplifier speaker out, Line-in (optional), SPDIF (optional)

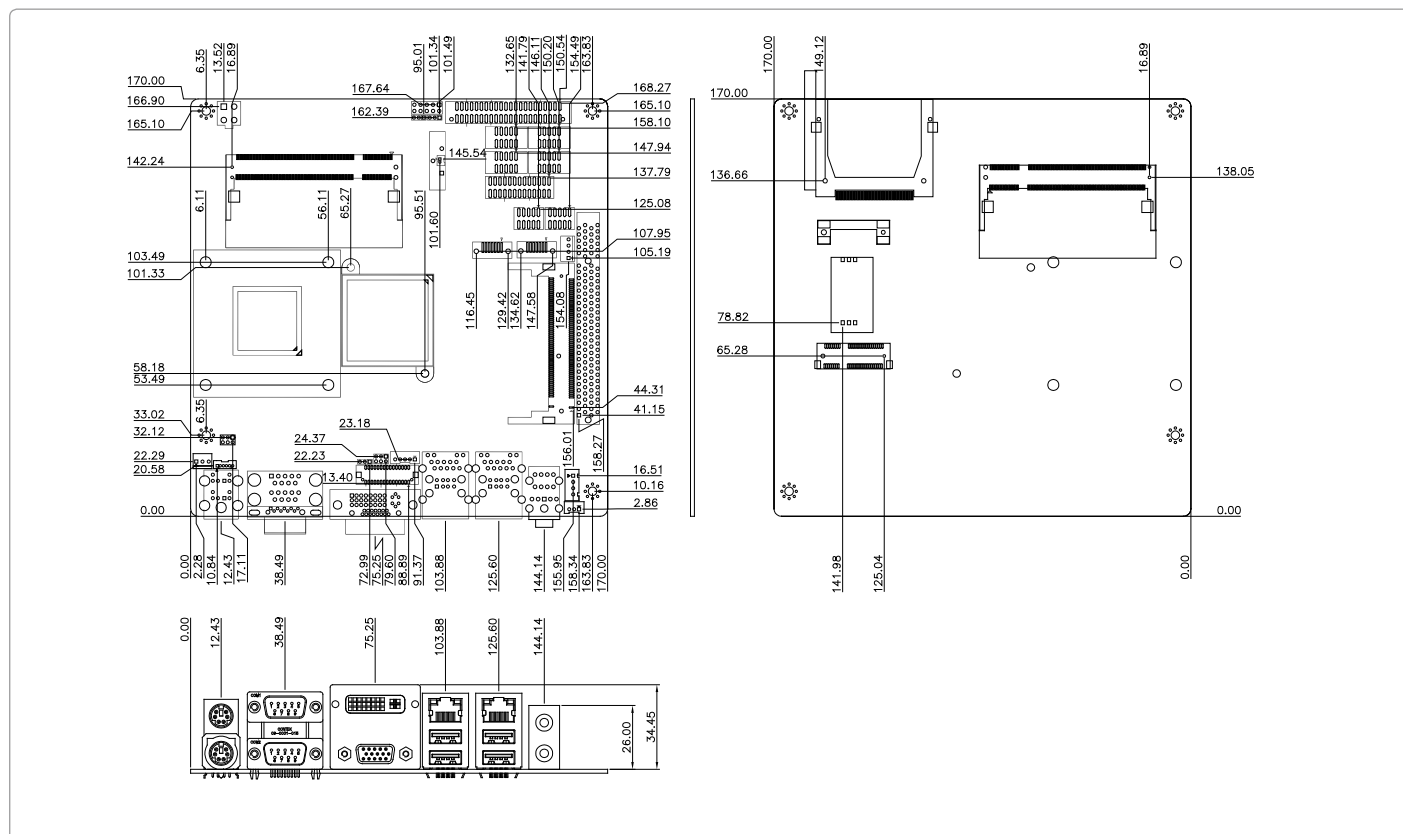
## Packing List

- 1709070500  
SATA Cable
- 1702151200  
Onboard SATA Power Cable
- 9657666600  
Jumper Cap
- M20945900  
Metal I/O Bracket
- CPU Cooler  
EMB-LN9T with Active Cooler (D525 Version) or With Passive Cooler (N455 Version)
- Product CD
- EMB-LN9T Rev. B

# EMB-LN9T Rev. B

## Dimension

Unit: mm



## Ordering Information

Part Number	CPU	RAM	Fan/Fanless	Display	Storage	LVDS	LAN	USB	RS-232	RS-232/422/485	Expansion Slot	Power	Temp.
TF-EMB-LN9T-B10	Intel® Atom™ D525	SODIMM	Fan	VGA/DVI-D	SATA2 x 2	18/24-bit Single Channel	GbE x 2	8	8	1	Mini PCIe x 1, Mini PCI x 1, PCI x 1	+12V/DC	0°C - 60°C
TF-EMB-LN9T-B10-01	Intel® Atom™ N455	SODIMM	Fanless	VGA/DVI-D	SATA2 x 2	18/24-bit Single Channel	GbE x 2	8	8	1	Mini PCIe x 1, Mini PCI x 1, PCI x 1	+12V/DC	0°C - 60°C

## Optional Accessories

- **1709100208**  
USB Cable
- **1701260200**  
Printer Cable
- **1701100206**  
COM Cable
- **1709030150**  
SPDIF Cable
- **1701440187**  
COM Cable (DB 9-pin x 4 to 44P 2.0mm)
- **TF-PER-R16P-A10**  
Riser Card, PCI + PCI-E for Mini-ITX
- **TF-PER-1110-A10**  
Riser Card for PCI, 2-slot