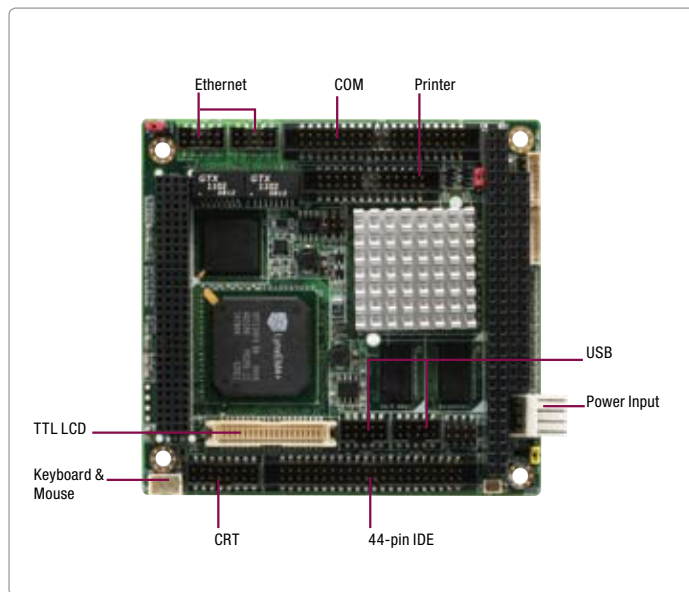


PFM-535S

PC/104 Module with DM&P® Vortex86SX®/Vortex86DX® SoC Processor



Features

- Onboard DM&P® Vortex86SX®/Vortex86DX® SoC Processor
- Onboard DDR2 Memory 256 MB
- 10/100Base-TX Ethernet x 2
- CRT & Up To 24-bit TTL LCD
- EIDE x 1, CompactFlash™ x 1
- USB2.0 x 4, COM x 4, Parallel x 1 (Optional)
- PC/104+ Expansion
- +5V Only Operation, AT Power Type

Specifications

System	
Form Factor	PC/104
Processor	Onboard DM&P® Vortex86SX® SoC (300 MHz)/ Vortex86DX® SoC (1 GHz) Processor
System Memory	Onboard DDR2 Memory – 256 MB
Ethernet	Vortex86SX®/DX® MAC controller + Intel® 82551ER, 10/100Base-TX x 2
BIOS	AMI - 256 KB ROM
Watchdog Timer	Generates a time-out system reset
H/W Status Monitoring	Supports power supply voltages and temperature monitoring
Expansion Interface	PC/104+
Battery	Lithium battery
Power Requirement	+5V/ AT
Power Consumption (Typical)	Vortex86DX® 256 MB 1.82A@+5V
Board Size	3.55" (L) x 3.77" (W) (90mm x 96mm)
Gross Weight	0.33 lb (0.15 Kg)
Operating Temperature	32°F ~ 140°F (0°C ~ 60°C)
Storage Temperature	-40°F ~ 176°F (-40°C ~ 80°C)
Operating Humidity	0% ~ 90% relative humidity, non-condensing
MTBF (Hours)	129,000
Display	
Supports CRT/LCD simultaneous/ dual view display	
Chipset	SMI712GF4
Resolution	Up to 1280x 1024 @ 85Hz colors for CRT Up to 1024 x 768 for LCD
LCD Interface	Up to 24-bit TTL LCD
I/O	
Storage	EIDE x 1 (UDMA-100 for two devices), CompactFlash™ x 1
Serial Port	RS-232 x 3, RS-232/422/485 x 1
Parallel Port	SSP/EPP/ECP mode (optional)
USB	USB2.0 x 4
PS/2 Port	Keyboard+Mouse x 1



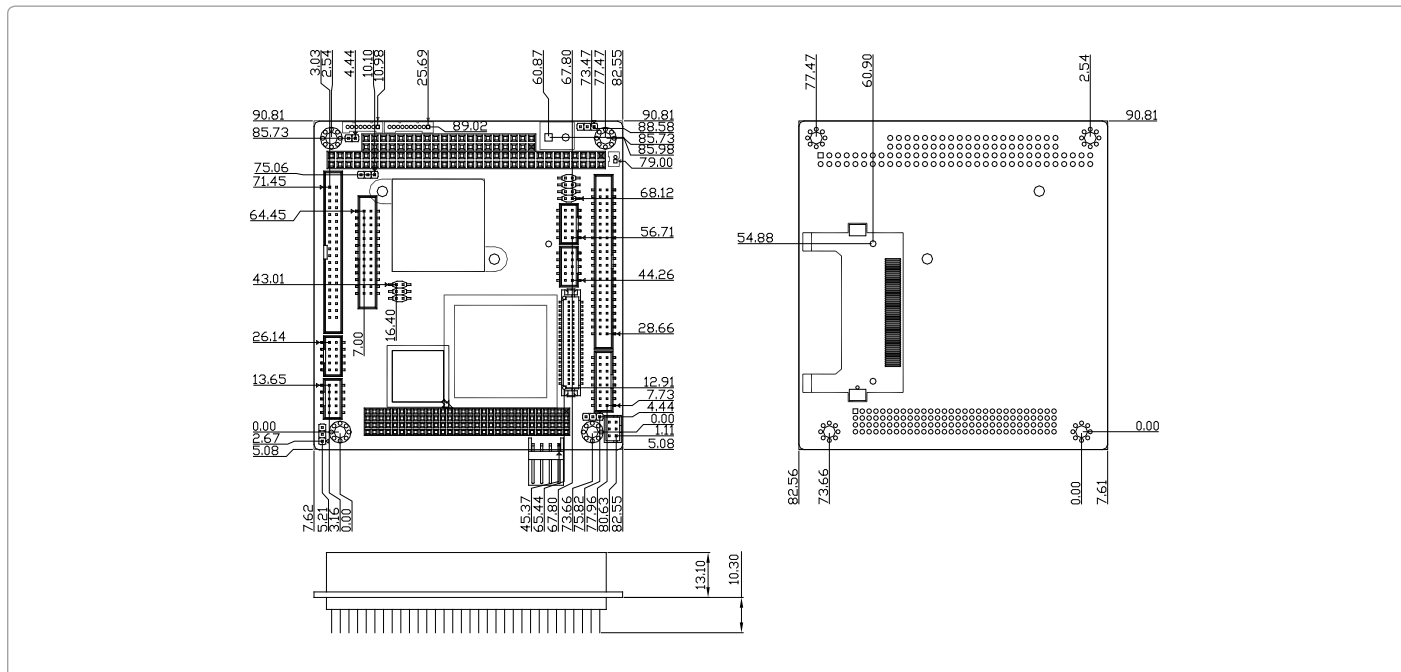
Packing List

- **Cable Kit**
 - 1700060152 Keyboard & Mouse Cable
 - 1701160201 VGA Cable Product CD
- **Product CD**
- **PFM-535S with Heatsink**

PFM-535S

Dimension

Unit: mm



Ordering Information

Part Number	CPU	RAM	Fan/ Fanless	Storage	Display	LVDS	LAN	USB	RS-232	RS-232/422/485	Parallel	Expansion Slot	Power	Temp.
PFM-535S-A10	Vortex86SX 300 MHz	256MB	Fanless	EIDE x 1, CompactFlash™ x 1	CRT + TTL	24b, 1CH	FE x 2	4	3	1	1	PC/104+	+5V/IAT	0°C - 60°C
PFM-535S-A10-01	Vortex86SX 300 MHz	256MB	Fanless	EIDE x 1, CompactFlash™ x 1	CRT + TTL	24b, 1CH	FE x 1	4	3	1	—	PC/104	+5V/IAT	0°C - 60°C
PFM-535S-A10-02	Vortex86DX 1GHz	256MB	Fanless	EIDE x 1, CompactFlash™ x 1	CRT + TTL	24b, 1CH	FE x 2	4	3	1	1	PC/104+	+5V/IAT	0°C - 60°C

Optional Accessories

- **PFM-P13DW2-A10**
PC/104 Board Power Supply Module with +5V & +12V Output PC/104 Rev. A1.0 WITAS 2
- **1701400205**
COM Cable, Length 20cm
- **1709100201**
USB Cable, Length 20cm
- **1701260201**
Printer Cable, Length 20cm
- **1700100201**
LAN Cable, Length 20cm
- **1701080150**
8-pin Front Panel, Length 15cm
- **1701010150**
10-pin Front Panel, Length 15cm