



SSF/SSH3725

37.7" Resizing LCD, 1000 nits LED backlight, 1920x460 ultra wide aspect ratio 16:3.8

SSF/SSH3725 is an innovative ultra-wide, sunlight readable, LED backlight LCD display. It provides LCD panel with specific ratios for digital signage, public transportation, exhibition hall, department store, vending machine and industrial applications. Incorporating with A.D. control board and backlight design, it is high brightness and sunlight readable panel, can display high-quality video with energy-efficient.

Key Features

- Resizing LCD
- Ultra Wide Screen (16 : 3.8)
- Sunlight Readable
- LED Backlight
- High Brightness 1000 nits
- Low Power Consumption
- High Uniformity (90%)
- Wide Dimming
- Slim Bezel



Specifications

V1

Model No.	SSF/SSH3725
Description	37.7" Resizing LCD, 1000 nits LED backlight, 1920x460
Display Area	930.2 x 222.9 mm
Brightness	1,000 cd/m ²
Resolution	1920 x 460
Aspect Ratio	16 : 3.8
Contrast Ratio	7000:1
Pixel Pitch (mm)	0.4845 x 0.4845
Pixel Per Inch (PPI)	52
Viewing Angle	176°(H), 176°(V)
Display Colors	16.7M
Response Time (Typical)	5 ms
Sync	LVDS
Power Consumption	50W / 55W
Dimensions (mm)	965 x 257 x 24
Weight (Net)	4.8 Kg
LED Driving Board	LID37
Control Board (Optional)	AD2662GD, AD2662GDVAR
<input type="checkbox"/> AD2662GD	VGA + DVI
<input type="checkbox"/> AD2662GDVAR	VGA + DVI (Optional AV/ S-Video / Component / Audio)
<input type="checkbox"/> Others	
F / R Control Button	5 Key / 4 Key
<input type="checkbox"/> 4 Key	Power Switch, Menu, Select (+,-),
<input type="checkbox"/> 5 Key	Power Switch, Menu, Select (+,-),Auto
OSD Menu	Brightness, Contrast, H/V Position, Color, Phase, Clock...
Optional	<input type="checkbox"/> Touch Screen

Specifications are subject to change without notice.

All brands or product names are trademarks or registered trademarks of their respective companies.

SSF= Panel+ LED Driving Board

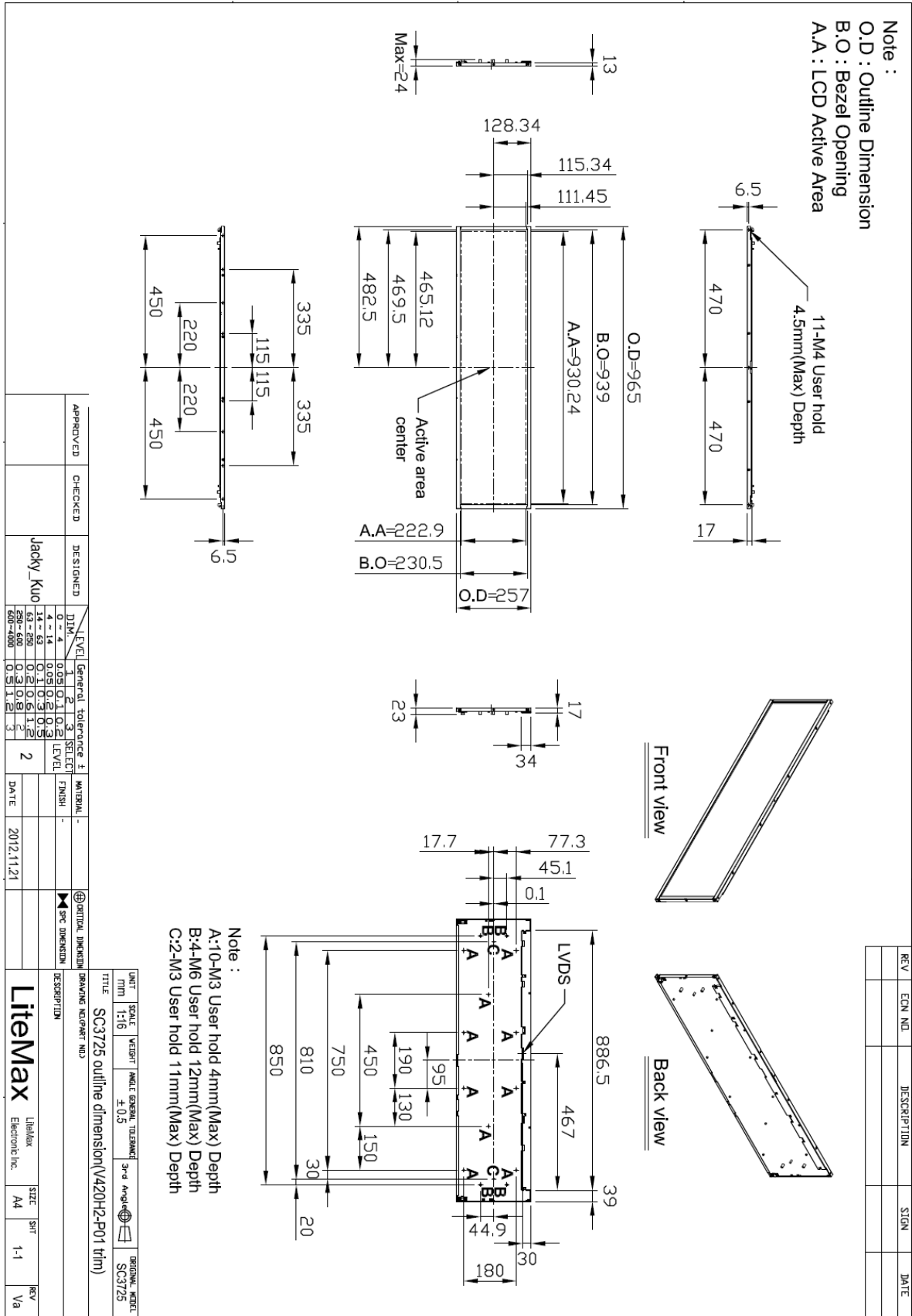
SSH= Panel+ LED Driving Board + Control Board



Mechanical Drawing

Outline Dimensions

Unit: mm





Ordering Information

Model Name	Description
SSF3725-ENN-A01	37.7",1000nits,1920*460,LID37,V01
SSH3725-ENN-G01	37.7",1000nits,1920*460,LID37,AD2662GD,DC12V input,V01

Optional Accessories

Part Number	Description
840612111200 (Optional)	ADAPTER.12V.10A.120W.PAC120F.DC POWER DIN,P
810618301010 (Optional)	CABLE.POWER.AC.1830mm.(US Type).3PIN PLUG TO SOCKET.SVT(SPT-2)18AWG 3C BLACK,P
810618301090 (Optional)	CABLE,POWER,AC,1830mm.(EU Type) 3PIN PLUG TO.SOCKET,H05VV-F 3G.0.75MMSQ BLACK,P
810618301050 (Optional)	CABLE,POWER,AC,1830mm.UK(FUSE) 3PIN PLUG TO.SOCKET,H05VV-F 3C(3G) 0.75MMSQ BLACK,P
810618301170 (Optional)	CABLE.POWER,AC,1830mm. (AU Type) 3PIN PLUG TO 2P SOCKET.LTSA 0.75MMSQ BLACK,P
810618301030 (Optional)	CABLE.POWER.AC.1830mm.(JP Type).2PIN PLUG Y TERMINAL TO. SOCKET.VCTF 3C 0.75MMSQ BLACK,P