

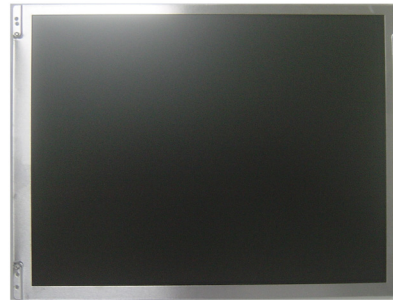


DLF1068 / DLH1068 (2000nits)
10.4" TFT LCD, LED Backlight 2000nits,SVGA

10.4" TFT LCD panel, built-in 2000 nits high bright for sunlight readable LCD display, high transmittance color filter, high transmission polarizing plates, Low Power Consumption, suitable for kiosk, advertising, POS, marine, transportation, gaming, studio display, gas pump.

Key Features

- Sunlight Readable
- LED Backlight
- High Shock & Vibration Resistance
- Low Power Consumption
- Wide Operation Temperature
- High Uniformity
- Low EMI Noise
- Wide Dimming
- Life Expectancy



Specifications

V1

Model No.	DLF1068	DLH1068
Description	10.4" TFT LCD, LED Backlight 2000 nits, SVGA	
Display Area (mm)	210.2 (H) x 158.4(V) mm	
Brightness	2000 cd/m ²	
Resolution	800 x 600 (SVGA)	
Contrast Ratio	600 : 1	
Pixel Pitch (mm)	0.264(H) x 0.264(V)	
Viewing Angle	+45°~-65°(H), +65°~-65°(V)	
Display Colors	262K	
Response Time (Typical)	25ms (Typical)	
Sync	LVDS	
Power Consumption	7.5W	11W
Dimensions (mm)	236(W) x 176.9(H) x 6.3(D)mm	
Weight (Net)	0.45Kg	
LED Driving Board	LID10A	
Control Board (Optional)	<input type="checkbox"/> AD6038GD	
	<input type="checkbox"/> AD6038GD	VGA+DVI
F / R Control Button	<input type="checkbox"/> 4 Key	
	<input type="checkbox"/> 4 Key	Power Switch, Menu, Select (+, -),
OSD Menu	Brightness, Contrast, H/V Position, Color, Phase, Clock...	
Optional	<input type="checkbox"/> AOT <input type="checkbox"/> Touch Screen	

Specifications are subject to change without notice.

All brands or product names are trademarks or registered trademarks of their respective companies.

DLF= Panel+LED Driving Board

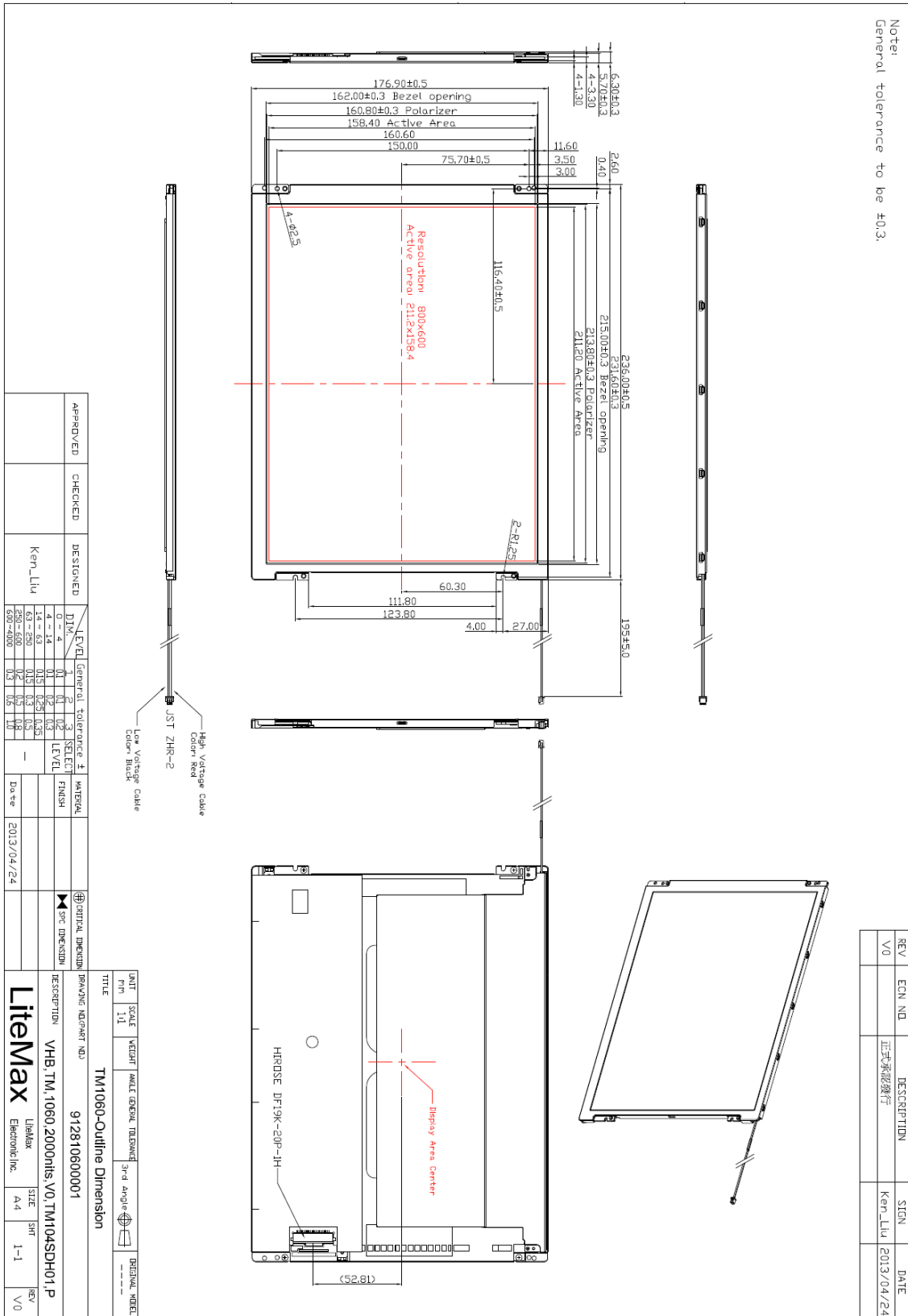
DLH= Panel+LED Driving Board+Control Board



Mechanical Drawing

Outline Dimensions

Unit:mm





Ordering Information

Model Name	Description
DLF1068-ENN-A51	10.4",2000nits,SVGA,LID10A,V01
DLH1068-ENN-I51	10.4",2000nits,SVGA,LID10A,AD6038GD,V01

Optional Accessories

Part Number	Description
840612051100	ADAPTER.12V.5A.60W.EA1050A,P
810618301010	CABLE.POWER.AC.1830mm USA type
810618301090	CABLE,POWER,AC,1830mm Europe type
810618301050	CABLE.POWER.AC.1830mm UK type
810618301170	CABLE.POWER,AC,1830mm Australia type
810618301030	CABLE.POWER.AC.1830mm Japan type
800901505000	CABLE,OTHER,LED,150mm,28AWG,1.5mm 2P connector to 1.5mm 2P connector, P