

FiD 1.8" SATA 25000



FCC E RoHS

Features

- Excellent data transfer speed
- Low power consumption
- Support Thermal Sensor
- S.M.A.R.T. & i-S.M.A.R.T. supported
- Intelligent system for error recovery
- Mechanical design for anti-vibration

R:240MB/s
W:220MB/s

SATA II
3Gb/s

ECC &
Wear leveling

Thermal
sensor

S.M.A.R.T

Specifications

Connector Type	Standard 7+9 pin Micro SATA connector
Flash Type	SLC (Single Level Cell)
Density	8GB, 16GB, 32GB, 64GB, 128GB
Interface	SATA II 3.0Gb
Sustained R/W Performance	Read : 240 MB/sec (max.) Write : 200MB/sec (max.)

Environmental

DC Input	+5V DC \pm 5% / +3.3V DC \pm 5%
Power consumption (Max.)	Read: 440 mA/590 mA Write: 530mA /670 mA Idle: 220 mA/260 mA
Operating Temperature	0°C~+70°C (Standard Grade) -40°C~+85°C (Industrial Grade)
Storage Temperature	-55°C~+95°C
Humidity	Relative Humidity: 10-95%, non-condensing
Flash Endurance	100,000 program/erase cycles
MTBF	> 3,000,000 hours
Certification	CE, FCC, RoHS
Warranty	5 years

Mechanicals

Dimension (W x L x H)	54.0x78.5x5.0 mm
Weight	45g \pm 5g
Vibration	20G, 7 Hz to 2K Hz, , 3 axes
Shock	1500G, Duration: 10ms, , 3 axes

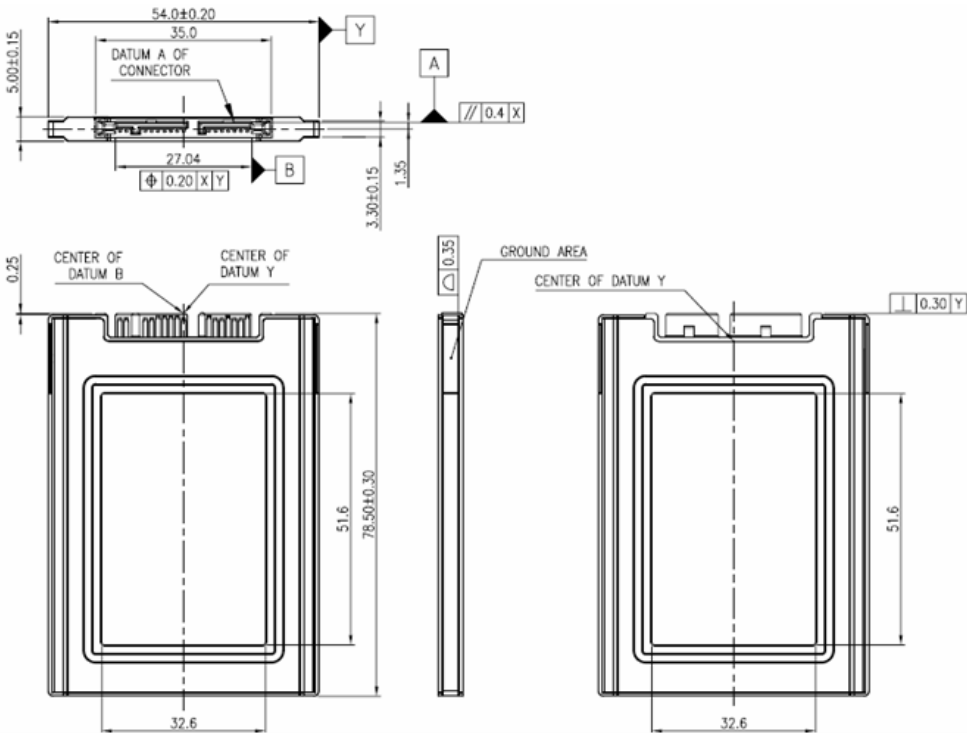
Health monitoring Tool

S.M.A.R.T.	Supported
i-S.M.A.R.T.	Supported (Utility for Windows, Linux)

Ordering Information

Capacity	Standard Grade	Industrial Grade
8GB	D1SN-08GJ20A <u>C</u> 1EB	D1SN-08GJ20A <u>W</u> 1EB
16GB	D1SN-16GJ20A <u>C</u> 1EB	D1SN-16GJ20A <u>W</u> 1EB
32GB	D1SN-32GJ20A <u>C</u> 1EB	D1SN-32GJ20A <u>W</u> 1EB
64GB	D1SN-64GJ20A <u>C</u> 1EB	D1SN-64GJ20A <u>W</u> 1EB
128GB	D1SN-A28J20A <u>C</u> 1EB	D1SN-A28J20A <u>W</u> 1EB

Mechanical Dimension



Integrated Thermal Sensor

As the speed of the SSD product get faster and faster, overall power consumption continues to increase. Accordingly, it brings a new concern: thermal management. The advantage of Thermal Sensor is that it will allow the SSD to either change the speed or throttle back on the flash accesses to allow the SSD to stay within temperature limits and prevent any reliability failures due to overheating.



The screenshot shows the iSMARTGreen2.0 software interface. The main window displays SMART disk information for an Emphese FD2510SI16G drive. The interface includes a status bar at the top and a main display area with various metrics and a table of SMART attributes.

ID	Attribute Name	Item Value	Raw Values
0C	Power Cycle Count	109	320064646D000000000000
09	Power-On Hours	0	3200646400000000000000
C2	Temperature	0	0700206400000000000000
E9	Average Erase Count	0	0200640000000000000000
EA	Spare Block	0	0200640000E80001AA0000
EB	Later Bad Block	Lat:63 Rea:47108 Wri:0...	020064003FB80400000000
E5			02006400ECD3519558ECEC
E8			020064303930333310802