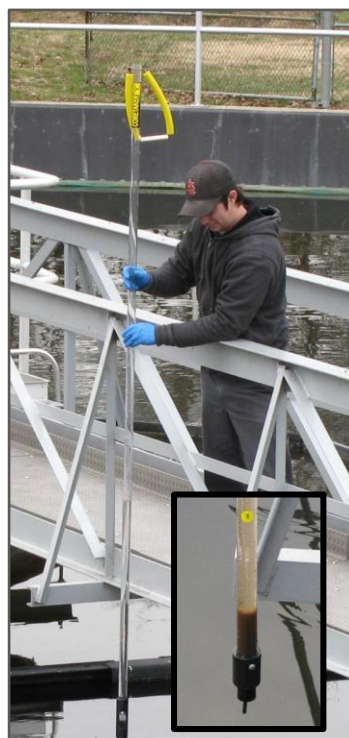
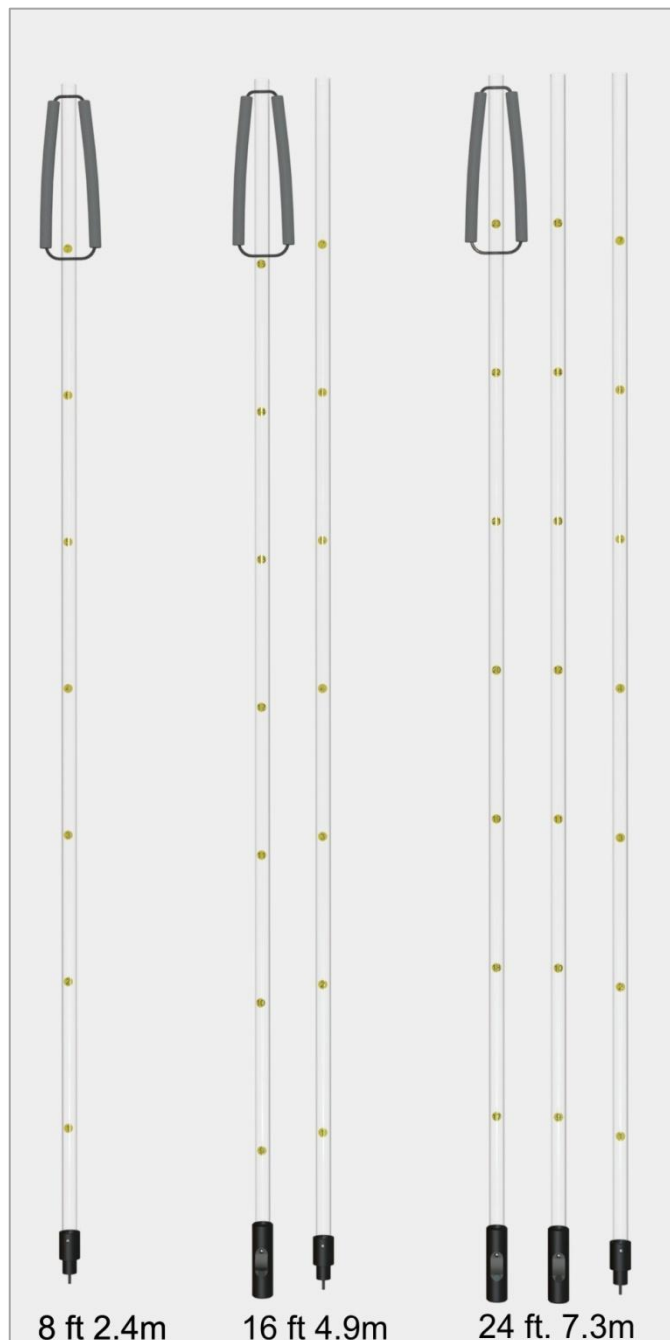
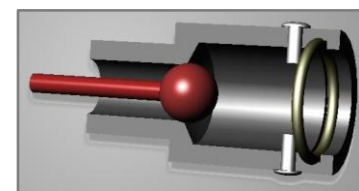
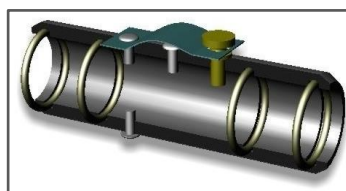
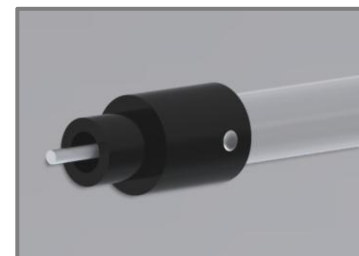


CORETAKER® is used in wastewater and clean water plants to view sludge blankets and extract sludge samples for determining solids inventories in the Process Centrifuge.



Since 1983



SLIP-LOCK COUPLER

AUTOMATIC CHECK VALVE

INDIVIDUALLY CNC MACHINED

Clear tubes are Polycarbonate with UV stabilizers. 1.25" OD.
Fittings are CNC machined black UHMW with internal O-rings.
Lanyard is closed cell industrial foam.

**A serious tool for
serious operators.**

CORETAKER® SLUDGE CORE SAMPLER B-10104

Standard lengths 8, 16, and 24 feet. Custom lengths available.



Thank you for purchasing a Raven Environmental Products process control instrument. Please contact our Customer Service Department at 800-545-6953 for any service needs.

Raven's CORETAKER® is a rugged core sampler designed to withstand the rigors of routine usage and **FLOAT** if dropped into water. CORETAKER® is the new generation core sampler manufactured with quality in the USA.

Equipment and Innovative Features

- Foam lanyard floats the unit if accidentally dropped in water.
- CNC machined black UV stable plastic components.
- Slip-Lock Coupler has a unique quick assembly and assembly design.
- Internal O-ring seals prevent leakage and "head drips".
- Check valve has a positive hydro-lock seal to retain fluid sample.
- Yellow numbered markers on tubes indicate sample depth.
- Polycarbonate clear plastic tubes are durable, rigid and UV stable.

Unit and Use

The Raven CORETAKER® can be assembled and disassembled quickly without tools.

Assembly

Fully insert the Check Valve section tube into the coupler fitting. Rotate the tube in the Coupler until the notch in the tube seats. This aligns the tube in the Coupler with the thumbscrew. Tighten thumbscrew and lock both tubes together.

**Lubricant on O-rings
may be necessary**

Disassembly

Unscrew the Coupler Thumbscrew and separate the Check Valve section from the Coupler.

Operation and sample collection

Slowly lower the Check Valve end of the tube to the floor of the sedimentation basin. Lift the sampler up seating the Check Valve and observe the solid/liquid interface level on the depth markers. Drain sample from CORETAKER® by simply touching the valve stem against any hard surface to unseat the Check Valve and purge the sample from the unit.

Care and maintenance

The floating Check Valve is the workhorse of the CORETAKER®, debris or sludge may form deposits on the seat of the valve and affect the seal. If seal leakage occurs, quickly oscillate the fluid sample against the valve to clear the debris.

Other Raven process control instruments:

SID-10200	Hand-held Sludge Interface Detector for locating sludge levels
F-10300	Laboratory Centrifuge for fast mixed liquor percent solids
C-10102	Settlemeter Kit (Measures sludge settling characteristics)

