

LC Fiber Optic TAPs

Providing Visibility Into Your Fiber Optic Network

Complete, Safe, Passive In-Line Monitoring

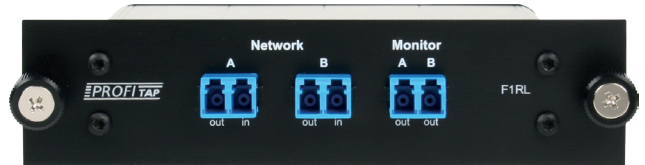
- Profitap LC Fiber Optic TAPs are designed to enable flawless in-line monitoring of Single-Mode and Multi-Mode fiber optic networks. They use LC connectors with low insertion loss zirconia sleeve adapters, and are available in Single-Mode (1310/1550nm 9/125µm) and Multi-Mode (850/1300nm 50µm and 62.5µm), with split ratios ranging from 50/50 to 80/20.

Features

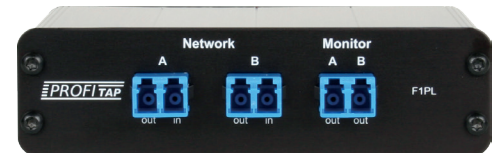
- Non-intrusive in-line monitoring
- Permanent network link guaranteed
- Monitoring of all OSI layers
- No packet loss
- No point of failure
- Passive, unpowered
- Various split ratios available
- 10-year warranty

Rack-Mountable 1-Link LC Fiber TAP (ref. F1RL)

The 1-Link LC Fiber TAP enables the monitoring of 1 LC fiber optic link. Its compact design allows it to be placed along with 2 other Profitap TAPs in a 1U Profitap Rack Frame (ref. ARF-1U) for up to 3 TAPs in 1U rack space.



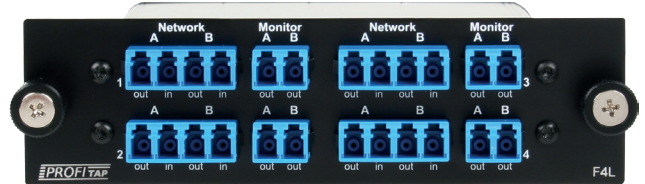
Rack-Mountable 1-Link LC TAP (F1RL)



Portable 1-Link LC TAP (F1PL)

Portable 1-Link LC Fiber TAP (ref. F1PL)

The Portable LC Fiber TAP enables the monitoring of 1 LC fiber optic link. Thanks to a special portable design, it can be easily transported on the field and placed at key points of the network with utmost space use efficiency. For optimal portability, a carrying zipper pouch is provided.



Rack-Mountable 4-Link LC TAP (F4L)

Rack-Mountable 4-Link LC Fiber TAP (ref. F4L)

The 4-Link LC Fiber TAP enables the monitoring of 4 LC fiber optic links. Its compact design allows it to be placed along with 2 other Profitap TAPs in a 1U Profitap Rack Frame (ref. ARF-1U) for up to 3 TAPs in 1U rack space.

Maximum Insertion Loss (dB)

Split ratio	50/50	60/40	70/30	80/20
Multi-Mode 50/62.5µm	4.0/4.0	3.0/5.0	2.4/6.3	1.8/8.1
Single-Mode 9µm	3.6/3.6	2.7/4.7	1.9/6.0	1.2/7.9

Note: These values don't include external connector loss.

Split ratio can vary 3-4%

Multi-Mode 50/62.5µm: [Dual Wavelength 850/1300 nm](#)

Multi-Mode 10Gb/50µm: [Wavelength 850 nm](#)

Single-Mode: [Dual Wavelength 1310/1550 nm](#)

Technical Specifications

Reference	F1RL	F1PL	F4L
Network Links	1	1	4
Monitor Links	1	1	4
Dimensions (WxDxH)	113 x 88 x 30 mm 4.4 x 3.5 x 1.2 in	113 x 88 x 30 mm 4.4 x 3.5 x 1.2 in	113 x 128 x 30 mm 4.4 x 5 x 1.2 in
Front Panel (WxH)	143 x 35 mm 5.6 x 1.4 in	—	143 x 40 mm 5.6 x 1.6 in
Weight	180 g 0.4 lb	174 g 0.38 lb	260 g 0.6 lb

			Order reference		
Connector	Type	Speed	1-Link Rack-M.	1-Link Portable	4-Link Rack-M.
LC	MM 62.5/125 µm	1 Gbps	F1RL-U-*	F1PL-U-*	F4L-U-*
	MM 50/125 µm	1-10 Gbps	F1RL-Z-*	F1PL-Z-*	F4L-Z-*
	SM 9/125 µm	1-100 Gbps	F1RL-S-*	F1PL-S-*	F4L-S-*

* Split Ratio: 50 = 50/50 • 60 = 60/40 • 70 = 70/30

For other split ratios please contact us for availability.

Profitap HQ B.V.

High Tech Campus 9
5656 AE Eindhoven
The Netherlands

+31 (0) 40 782 0880

www.profitap.com

Dual Output LC TAP

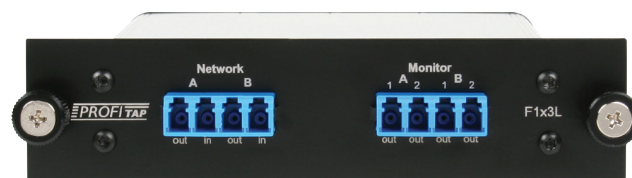
Set up Two Monitor Ports on a Single Link

Complete, Safe, Passive In-Line Monitoring

- The Dual Output LC TAP is a Fiber Optic TAP suited for the monitoring of a single fiber optic link by two different analyzers. It uses LC connectors with low insertion loss zirconia sleeve adapters, and is available in Single-Mode (1310/1550nm 9/125µm), with a 50/25/25 or 40/30/30 split ratio.

The Dual Output TAP splits the optical signal twice in order to provide two monitor output signals from a single link. These two output signals can be connected to two separate monitoring systems, to be filtered and analyzed in different ways.

Its compact design allows it to be placed along with 2 other Profitap TAPs in a 1U Profitap Rack Frame (ref. ARF-1U) for up to 3 TAPs in 1U rack space.



Rack-Mountable Dual Output LC TAP (F1x3L)

Features

- Non-intrusive in-line monitoring
- Permanent network link guaranteed
- Monitoring of all OSI layers
- No packet loss
- No point of failure
- Passive, unpowered
- Various split ratios available
- 10-year warranty

Maximum Insertion Loss (dB)

Split ratio	50 / 25 / 25	40 / 30 / 30
Single-Mode 9µm	3.7 / 7.4 / 7.4	4.9 / 6.1 / 6.1

Note: These values don't include external connector loss.

Split ratio can vary 3-4%

Single-Mode: [Dual Wavelength 1310/1550 nm](#)

Technical Specifications

Reference	F1x3L
Network Links	1
Monitor Links	2
Connectors	LC quad with zirconia adapters
Enclosure	Black & natural anodized aluminium
Operating Temperature	0°C to 55°C
Storage Temperature	-10°C to 90°C
Humidity	10 to 90%, non-condensing
Dimensions (WxDxH)	113 x 128 x 30 mm 4.45 x 5.04 x 1.18 in
Front Panel Dim. (WxH)	143 x 35 mm 5.63 x 1.38 in
Weight	207 g 0.46 lb

Connector	LC	LC
Type	SM 9/125 µm	SM 9/125 µm
Speed	1-100 Gbps	1-100 Gbps
Split ratio	50 / 25 / 25	40 / 30 / 30
Order reference	F1x3L-S-50	F1x3L-S-40

Profitap HQ B.V.

High Tech Campus 9
5656 AE Eindhoven
The Netherlands

+31 (0) 40 782 0880

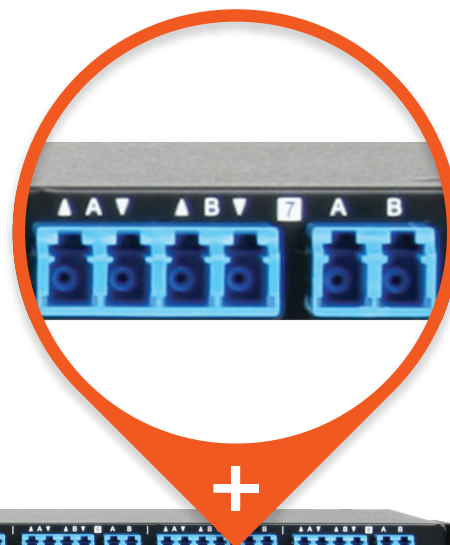
www.profitap.com

F8L**High Density Fiber Optic TAP**

Monitoring of up to 8 LC fiber optic links

- The F8L High Density Fiber Optic TAP is designed to enable flawless in-line monitoring of Single-Mode and Multi-Mode fiber optic networks. The F8L use LC connectors with low insertion loss zirconia sleeve adapters, and is available in Single-Mode (1310/1550nm 9/125µm) and Multi-Mode (850/1300nm 50µm and 62.5µm), with split ratios ranging from 50/50 to 80/20.

The F8L enables the monitoring of up to 8 LC fiber optic links. Its ultra-thin design allows for up to 3 to be placed in a 1U rack space, for up to 24 monitored LC links in a single RU.



- Features**
 - Non-intrusive in-line monitoring
 - Permanent network link guaranteed
 - Monitoring of all OSI layers
 - No packet loss
 - No point of failure
 - Passive, unpowered
 - Various split ratios available
 - 10-year warranty

- Maximum Insertion Loss (dB)**

Split ratio	50/50	60/40	70/30	80/20
Multi-Mode 50/62.5µm	4.0/4.0	3.0/5.0	2.4/6.3	1.8/8.1
Single-Mode 9µm	3.6/3.6	2.7/4.7	1.9/6.0	1.2/7.9

Note: These values don't include external connector loss.

Split ratio can vary 3-4%

Multi-Mode 50/62.5µm: [Dual Wavelength 850/1300 nm](#)

Multi-Mode 10Gb/50µm: [Wavelength 850 nm](#)

Single-Mode: [Dual Wavelength 1310/1550 nm](#)

Technical Specifications

Reference	F8L
Network Links	8
Monitor Links	8
Connectors	LC duplex with zirconia adapters
Enclosure	Structured black oven painted steel
Operating Temperature	0°C to 55°C
Storage Temperature	10°C to 90°C
Humidity	10 to 90%, non-condensing
Dimensions (WxDxH)	430 x 133 x 15 mm
	16.9 x 5.2 x 0.6 in
Front Panel Dim. (WxH)	484 x 15 mm
	19 x 0.6 in
Weight	1100 g
	2.43 lb

Connector	Type	Speed	Order reference
LC	MM 62.5/125 µm	1 Gbps	F8L-U-**
	MM 50/125 µm	1-10 Gbps	F8L-Z-**
	SM 9/125 µm	1-100 Gbps	F8L-S-**

** Split Ratio: 50 = 50/50 • 60 = 60/40 • 70 = 70/30

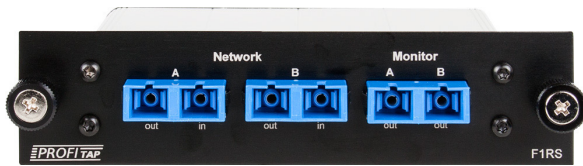
Profitap HQ B.V.

High Tech Campus 9
5656 AE Eindhoven
The Netherlands

+31 (0) 40 782 0880

www.profitap.com

1-Link SC Fiber Optic TAP



Rack Mount

Profitap SC Fiber Optic TAPs are designed to enable flawless in-line monitoring of Single-Mode and Multi-Mode fiber optic networks. They use SC connectors with low insertion loss zirconia sleeve adapters, and are available in Single-Mode (1310/1550nm 9/125µm) and Multi-Mode (850/1300nm 50µm and 62.5µm), with split ratios ranging from 50/50 to 90/10.

The Permanent Network Link feature guarantees permanent network connectivity. Unlike SPAN ports, TAPs monitor all 7 OSI layers at wire speed, and see packets of all sizes and types, including errors.

The TAP is non-intrusive for 100% security. It is transparent to the network, and introduces no point of failure.

Profitap Fiber TAPs are "all-optical", data rate independent, and designed for use in 10/100/1000 and 10 Gb Ethernet, ATM, SONET, FDDI, etc.

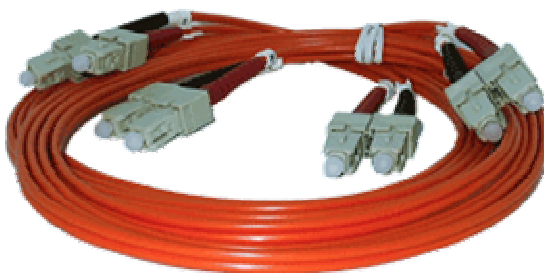
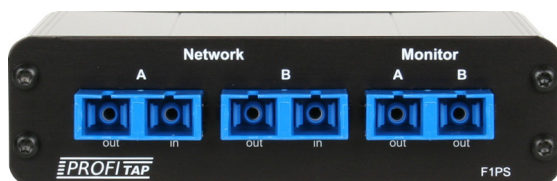
- Passive monitoring
- No point of failure
- No power required
- Invisible to the network
- 10-year warranty

Maximum Insertion Loss (dB):

Split ratio	50/50	60/40	70/30	80/20	90/10
Multi Mode 50/62.5 + 10Gb	4.4/4.4	3.1/5.0	2.4/6.3	1.8/8.1	--
Single Mode	3.7/3.7	2.8/4.9	2.0/6.1	1.3/8.0	0.8/12.0

Multi-Mode 50/62.5µm....Dual Wavelength 850/1300 nm
Multi-Mode 10Gb/50µm..Wavelength 850 nm
Single-Mode.....Dual Wavelength 1310/1550 nm

Portable model



2 x 2m Duplex Fiber Cables

- Passive monitoring
- No point of failure
- No power required
- Compact, easy to carry around



Dual compartment zipper pouch

Profitap HQ B.V.

High Tech Campus 9
5656 AE Eindhoven
The Netherlands

+31 (0) 40 782 0880

www.profitap.com

Full Duplex Optical Monitoring 2-Link SC Fiber Optic TAP

F2S-* -**

Designed for cost effective connection and efficient monitoring your network:

Rack Mountable 2-Link SC Fiber Optic TAP

This Fiber TAP is a straightforward solution.
It is a perfect connectivity product for various appliances like:

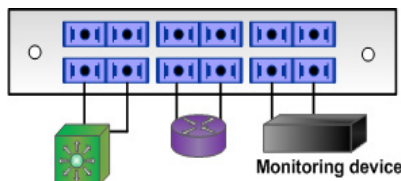
IDS (security) tools
Packet Flow Switches
Consolidating Tools
Network Monitoring
Protocol Analysis

Providing two separate In-Line TAP in one housing,
it passively sees and monitors all protocol layers, offering:

- Non intrusive In-Line Monitoring
- Permanent Network Link guaranteed
- Monitoring for all Protocol Levels
- No Package Loss
- No point of failure
- Passive, unpowered device
- All In- and Out- Ports & all Monitor Ports at frontside
- Tested with major analysis & monitoring systems

General Application:

For use with 2 Channel Hardware or Software Analyzer or
Aggregation facilities/appliances at 1G/10G & 40G Networks:



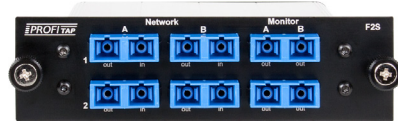
Maximum Insertion Loss (dB):

Split ratio	50/50	60/40	70/30	80/20	90/10
Multimode 50/62,5µm	4,4/4,4	3,1/5,0	2,4/6,3	1,8/8,1	-
Single Mode 9µm	3,7/3,7	2,8/4,9	2,0/6,1	1,3/8,0	0,8/12,0

Splitratio can vary 3 to 4 %

MultiMode 50/62.5µm: Dual Wavelength 850/1300 nm
MultiMode 10Gb/50µm: Wavelength 850 nm
Single Mode: Dual Wavelength 1310/1550 nm

1G 10G 40G ATM SC MM SM



Available Models:

F2S-* -**

Order Informations:

Base Product #	Fibertype	Split ratio
F2S	E U S Z	50
		60
		70
		80
		90

* please contact us for availability:

E = MM 50/125µm U = MM 62.5/125µm
S = SM 9/125µm Z = MM 10Gb

Optional Accessoires:

ARF-1U - 1U Rack Frame



AFP1U - Filling Plate



General Specifications:

6x duplex Zirconia SC Sleeve connectors
Metal housing, structured black oven painted
Operating Temperature: 0°C to 50°C
Storage Temperature: -10°C to 80°C
Humidity: 10% to 90%, non-condensing

Weight & Size:

Main unit (WxDxH): 113 x 128 x 30 mm, 250 g
Front panel (WxH): 143 x 40 mm

Conformity:

Profitap HQ B.V.

High Tech Campus 9
5656 AE Eindhoven
The Netherlands

+31 (0) 40 782 0880

www.profitap.com