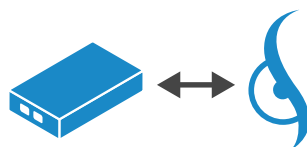


PROFI SIGHT

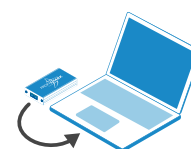
*FLOW-BASED NETWORK ANALYSER FOR NETWORK TROUBLESHOOTING
AND PERFORMANCE MONITORING*



REAL-TIME ANALYTICS



FULL PROFISHARK INTEGRATION



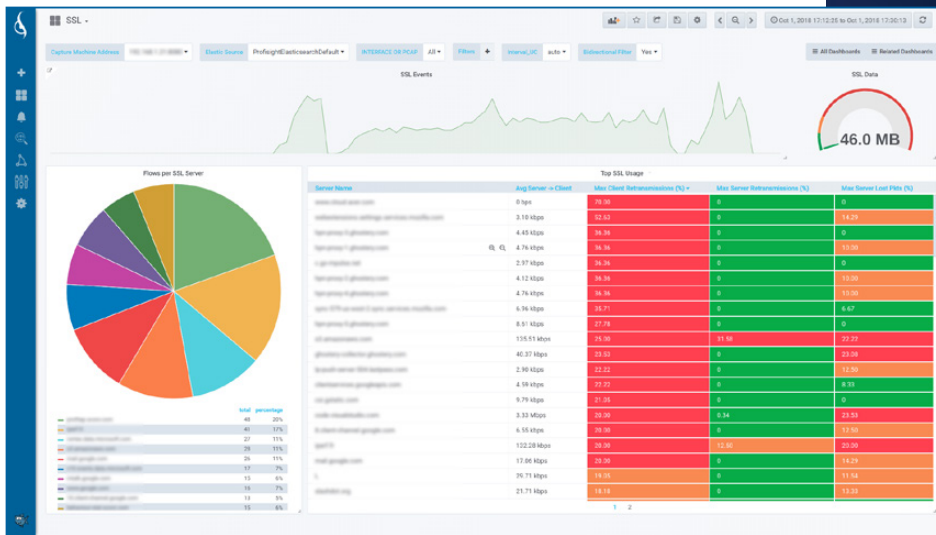
EASY DEPLOYMENT

ABOUT PROFISIGHT

ProfiSight is a web-based network traffic monitoring application, giving a complete insight of the network and infrastructure, providing remote capturing, seven layers (OSI model) overview, flow based analysis, APM, trend reports and much more. It's designed and optimized for fast indexing and filtering large amounts of network traffic instantly, greatly optimizing your workflow and reducing time spent on troubleshooting. ProfiSight provides visibility and diagnostics across your distributed and dynamic applications such as DNS, NETBIOS, NTP, FTP, SSH, SNMP, most of the common user applications and many others.

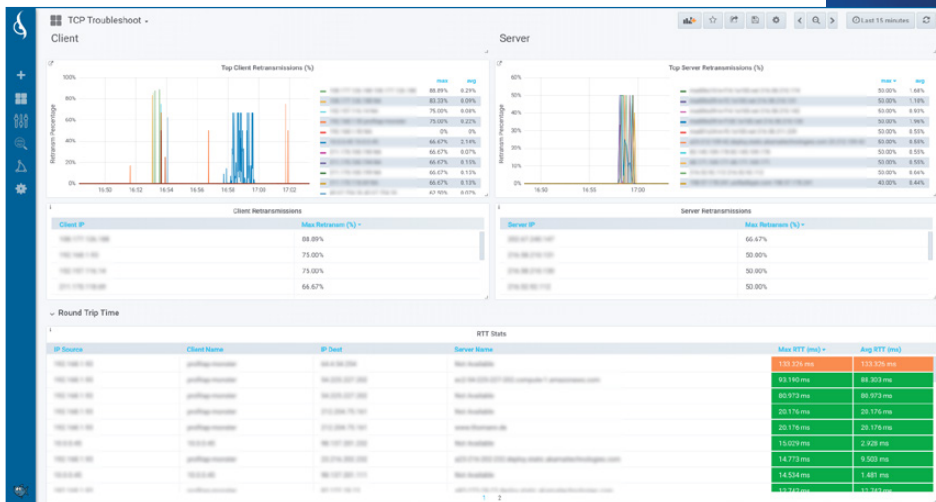
FEATURES

- **SIMPLE, FAST AND ACCURATE ISSUE IDENTIFICATION**
Get immediate insight into network traffic and adjust your resources for optimal performance and quickly spot network issues.
- **REMOTE OFF-SITE DIAGNOSIS AND CAPTURE (PROFISHARK)**
ProfiSight is designed for fast indexing of traffic capture and will help you improve your monitoring workflow and save valuable troubleshooting time.
- **REAL-TIME ANALYTICS**
Connect to multiple ProfiShark capture points at once and combine the captured files into a single view for analysis.
- **CUSTOMIZE YOUR VIEW OF THE NETWORK (DASHBOARDS AND PANELS)**
Besides a list of predefined dashboards, ProfiSight allows users to define and create dashboards to their own requirements.
- **USE THE POWER OF TRAFFIC CAPTURE WITH PROFISHARK**
Good analysis starts with a reliable capture of the network traffic. ProfiShark gives you exactly that with line-rate and fail-safe performance.



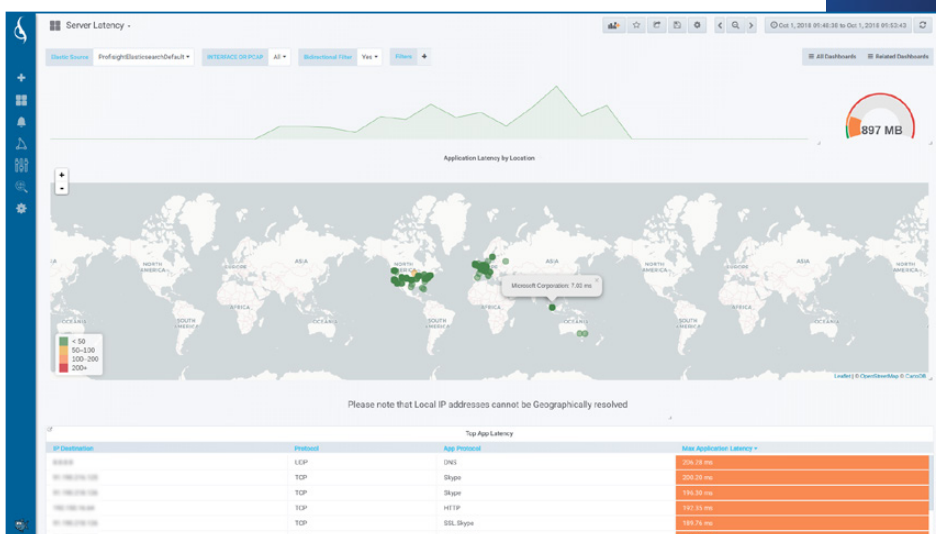
Application Performance Monitoring

Get an overview, or filter on your preferred application. I.e., HTTP, SSL or DNS Dashboards.



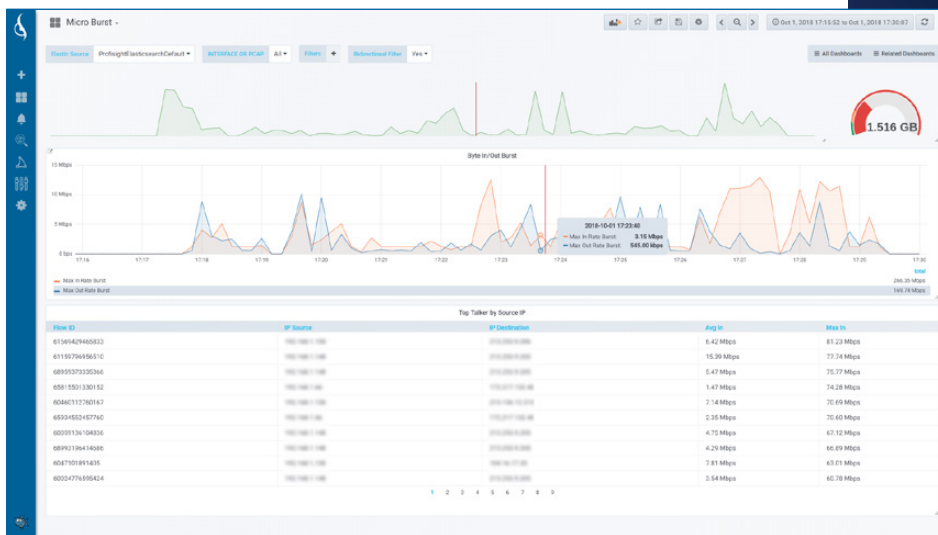
TCP Troubleshooting

Pin-point the root cause of your problem with TCP Dashboards, such as retransmissions, lost packets, server congestion, ports usage, and more.



Latency Detection

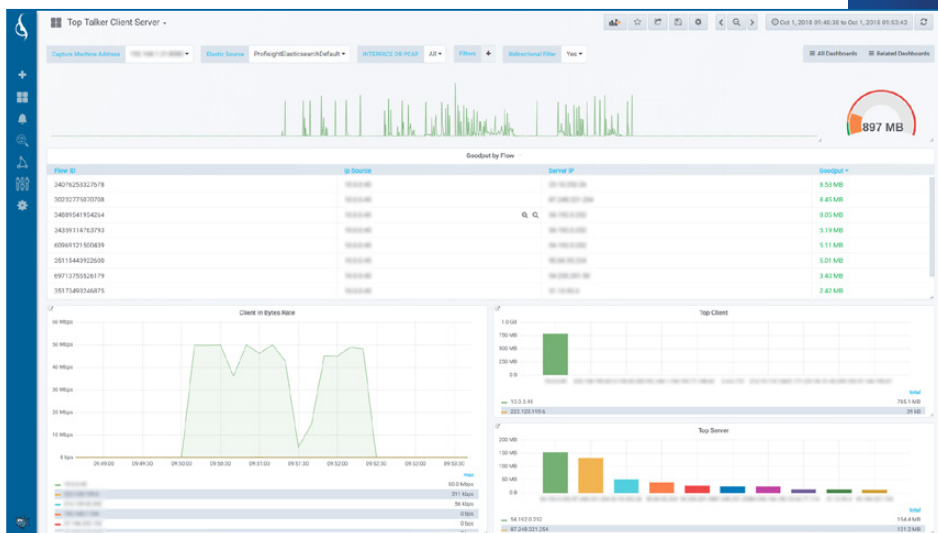
Application latency per server, including GeoIP resolution in map.



Bandwidth Usage

Bandwidth usage per host, flow, port and others.

Microburst detection. Goodput metrics. Packet and traffic statistics.



Top Talkers

Top clients / servers in your network, sorted by packets, bandwidth consumption or protocol.

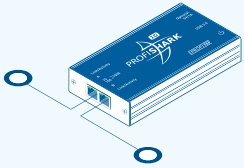


INTEGRATION WITH PROFITAP PRODUCTS

ProfiSight integrates seamlessly with the ProfiShark range of portable capture devices, allowing a reliable line-rate capture from a physical TAP directly into ProfiSight, providing 100% accurate visibility into the network. There is no vendor lock however. ProfiSight also provides a GUI to import Wireshark captures from any other source.



CAPABILITIES

- Bandwidth utilization, microbursts
- Statistics per host, IP and per L4 and L7 Protocols
- Flow metrics per interface
- TCP indicators (lost packets, retransmissions, zero windowing, etc)
- Application latency metrics, per server and location
- Application specific dashboards

NETWORK ACCESS	FLOW-BASED TRAFFIC ANALYSIS	PACKET LEVEL TRAFFIC ANALYSIS
 <ul style="list-style-type: none">● ProfiShark Integration● 100% Visibility● Line-Rate Capture	 <ul style="list-style-type: none">● Fast Indexing● Bird's-Eye View● Quickly Spot Issues● Real-Time Visibility	 <ul style="list-style-type: none">● Wireshark Compatible● Deep Packet Analysis

SYSTEM REQUIREMENTS

Hardware:	Recommended: Intel Quad 3.0GHz, 8GB Ram or more — Minimum: Intel Core Duo 2.4GHz, 8GB Ram
Network:	Fast Ethernet Gigabit network adapter
Disk Space:	350MB Installation 5GB minimum free disk space recommended for first captures Long-term captures limited by disk space
Devices:	Up to 6 ProfiShark devices can be used to capture simultaneously
OS:	64bit Windows 10 64bit Linux (LTS) Ubuntu Family