

# CT3™ Texture Analyzer

compression and tension testing for rapid QC analysis

An extensive history and customer input have contributed to the development of the most powerful, low cost, stand-alone Texture Analyzer ever produced. With six test modes (plus calibration check) and a wide choice of accessories, no other texture analyzer has ever done so much without requiring a computer and software!

## Standard Test Modes

### Normal Test:

a single compression cycle

### Hold Time Test:

compress and hold

### Cycle Count Test:

compress multiple times

### Bloom Test:

gelatin bloom strength test

### TPA Test:

texture profile analysis

### Tension Test:

tensile testing

### Surimi Test:

gel strength

### Static Load Test:

calibration check

## Texture Loader Software

allows up to ten custom tests and ability to lock parameters

## Compression distance

up to 10cm, can accommodate sample up to 22.5cm, almost 9 inches tall. Probe shaft is 8cm from back wall.

## Choice of Load Cells

7 measurement ranges up to 50kg

## Choice of Base Tables

allows for larger samples and more accessory choices



*CT3 with Fixture Base Table and Cylindrical Probe in compression (TPA) mode*

## What's Included?

Instrument with choice of load cell  
Texture Loader Software  
USB & Power Cables

## What else do I need?

Rotary Base Table, Fixture Base Table (see below) or Adjustable Base Table (p66)  
At least one probe or test fixture (p60-64)

## Optional Accessories

The CT3 has a wide variety of probes, fixtures and jigs which enable it to be very versatile. AMETEK Brookfield can also custom design a fixture and probe for most applications.

TexturePro CT Software TA-CT-PRO-AY (p59)  
Temperature Probe DVP-94Y  
Bubble Level TA-LVL  
Calibration Weight Set (p59)  
Gelatin Bath System for gel conditioning (p57)  
Bloom Jar - industry approved TA-GBB-2

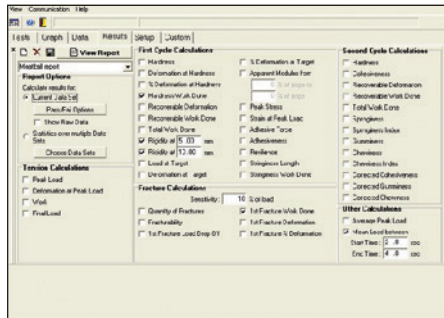
## TexturePro CT Software Optional

COLLECT DATA AND PERFORM DETAILED DATA ANALYSIS WITH REAL-TIME GRAPHIC PLOTTING.

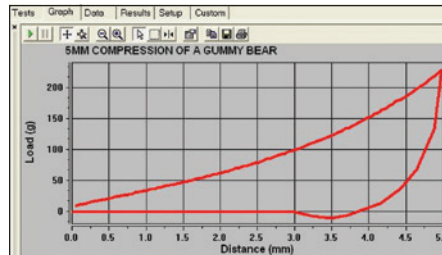
While the CT3 can perform many tests in stand alone mode, use of TexturePro CT Software permits creation of multiple tests and automatic execution without operator involvement.

Easily create custom reports and graphs right from the menu screen.

- Sample identification set-up screen helps new operators quickly get started; test fields outline a variety of parameters
- Intuitive set up for test methods and database file structures in a single window
- Data is captured as a graph and stored in tabular database format
- Advanced data analysis with built-in parameter calculations such as springiness, chewiness, hardness and much more!



Sample Test Set-up



On Screen Live Force Deformation Curve



## Tension Mode

provides tensile testing capability

MODEL	Load Range / Resolution*
CT3-100	0-100g/0.01g
CT3-1000	0-1000g/0.10g
CT3-1500	0-1500g/0.20g
CT3-4500	0-4500g/0.50g
CT3-10kg	1-10000g/1.0g
CT3-25kg	1-25000g/2.0g
CT3-50kg	2-50000g/5.0g

g = grams kg = kilograms \*Accuracy =  $\pm 0.5\%$  Full Scale Range (FSR)

## ALL CT3 MODEL SPECIFICATIONS

Speed:

Range	0.01-0.1mm/s (increments 0.01mm/s)
	0.1 - 10mm/s (increments 0.1mm/s)

Accuracy  $\pm 0.1\%$  of set speed

Position:

Range	0-101.6mm
Resolution	0.1mm*
Accuracy	0.1mm

mm = millimeter s = seconds

\*Resolution 0.01mm when used with TexturePro CT Software



## TA-CW-1500C

Calibration Weight Set contains a combination of certified weights which may be used to confirm the calibration and linearity of each specific load cell.